

MODEL NUMBER
TRM-2443-MC-SMA-02

NOTES:

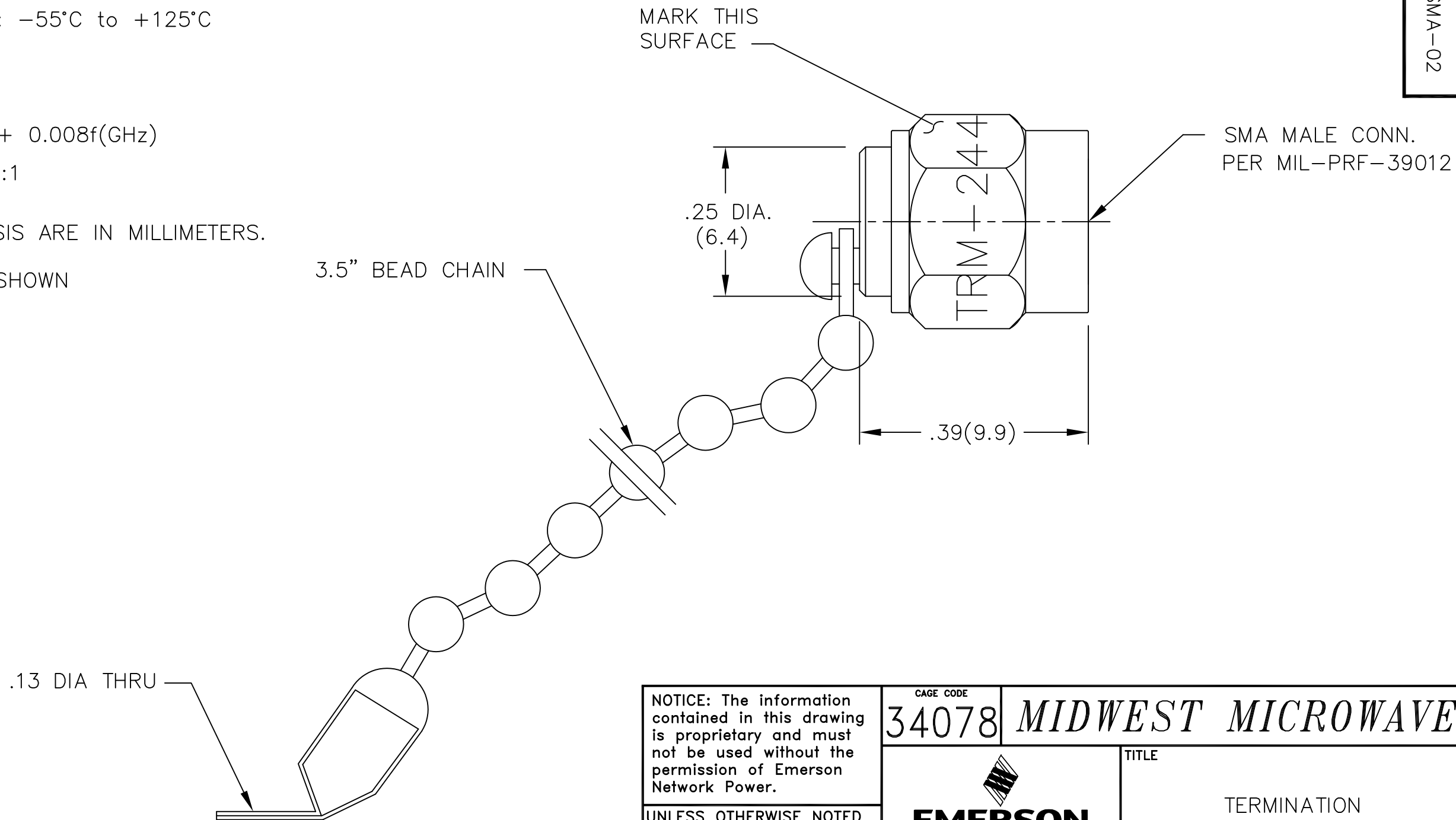
1.0 ELECTRICAL SPECIFICATIONS:

- 1.1 FREQUENCY RANGE: DC to 26.5 GHz
- 1.2 MAXIMUM INPUT POWER: 0.5 WATTS @ +25°C
DERATED LINEARLY TO 0 WATTS @ +125°C
- 1.3 OPERATING TEMP. RANGE: -55°C to +125°C
- 1.4 IMPEDANCE: 50 OHMS
- 1.5 VSWR (MAX.):

DC to 18.0 GHz: $1.05 + 0.008f(\text{GHz})$
18.0 to 26.5 GHz: 1.30:1

2.0 DIMENSIONS IN PARENTHESIS ARE IN MILLIMETERS.

3.0 MARKING: MARK UNIT AS SHOWN



NOTICE: The information contained in this drawing is proprietary and must not be used without the permission of Emerson Network Power.

UNLESS OTHERWISE NOTED DIMENSIONS ARE IN INCHES AND TOLERANCES ARE:
3 PLACE DECIMALS ±.005
2 PLACE DECIMALS ±.02
FRACTIONS ±1/64
PARALLELITY: T.I.R. _____
FLATNESS: T.I.R. _____
CONCENTRICITY: T.I.R. _____
ANGLES AND PERPENDICULARITY: ±1'

CAGE CODE 34078		MIDWEST MICROWAVE	
 EMERSON Network Power Connectivity Solutions		TITLE TERMINATION OUTLINE DRAWING	
		DRAWING NUMBER TRM-2443-MC-SMA-02-01	REV. B
DRAWN/DATE A.BEATTY 2/7/94	ENG./DATE G.KOZAK 3/9/94	SCALE: 5=1	SHEET 1 of 1
CHECKED/DATE M.HOLLMAN 3/8/94	APPROVED/DATE		

REV.	DESCRIPTION	DATE
-	RELEASED	3/10/94
A	ECN 14170	12/19/94
A1	ADDED TITLEBLOCK	11/15/05
B	ECO 23407	3/23/11