

NOTES:

① MATERIAL: COPPER (STOCK TKN. $\frac{.031}{.79} \pm .001$)
 PLATING: ELECTRO-TIN (.0003 MIN.)

② BRAZED SEAM

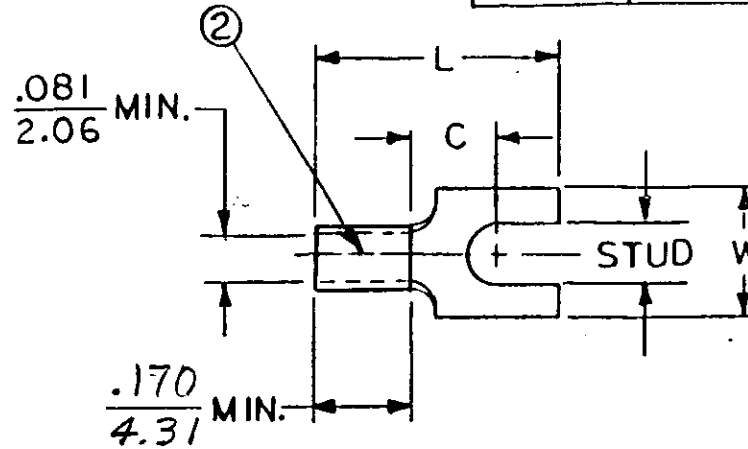
STUD SIZES: ($\pm .005$)

- 02 = .094
- 04 = .119
- 06 = .146
- 08 = .173
- 10 = .198
- 14 = .265
- 56 = .328
- 38 = .390

"UL" LISTING # E32244
 "CSA" LISTING # 18689

ALL DIMENSIONS = $\frac{\text{INCHES}}{\text{MM}}$

WIRE SIZE: 16 - 14 AWG.
 1.0 - 2.5 MM²



FILE NO.

PART NUMBER	"W" $\pm .010$	"C" MIN.	"L" MAX.				AVAILABLE STUD SIZES
BB-3781-	$\frac{.295}{7.49}$	$\frac{.211}{5.36}$	$\frac{.556}{14.12}$				04, 06, 08, 10

DIMENSIONAL TOLERANCES UNLESS OTHERWISE SPECIFIED			REFERENCE	SCALE: NTS	DATE	TITLE: SPADE TONGUE TERMINAL VERSAKRIMP 300-SERIES	
FRAC.	DEC.	ANG.		DRWN. BY: JJ	11-28-84		
\pm	\pm	\pm		CHKD. BY: GZ	12-4-84		
				APPRD. BY:			
DWG. NO.	A	CUSTOMER DWG.					