

1

2

3

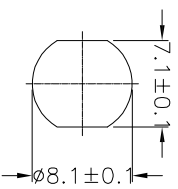
4

5

6

7

A



Recommended Panel Cut-Out

A

Notes:

@@ Important Dimension To Check

Waterproof Rate: IP67

LED Holder: Copper Alloy, Nickel Plating

LED Spec:

ø5mm; Super Bright; Red/Green; Bi-Color LED

Lens Color: Water Clear

Forward Voltage: Red Min.1.6/Max.2.6(V)

Green Min.2.8/Max.3.8(V)

Forward Current: Red Max. 35mA

Green Max. 20mA

Luminous Intensity: Red Min.1000/Max.3000(Mcd)

Green Min.4900/Max.16500(Mcd)

Reverse Voltage: DC 5V

Operating Temperature: -30°C~+80°C

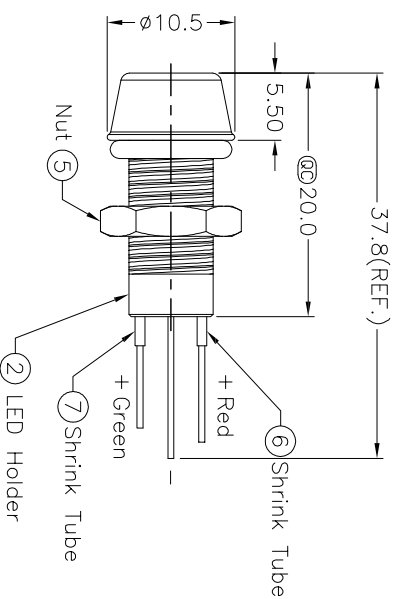
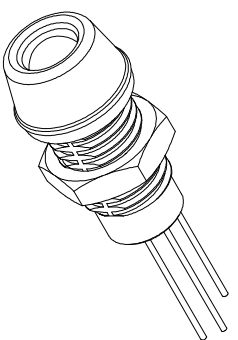
O-Ring: Silicone, Gray

Screw Nut: Copper Alloy, Nickel Plating

For Panel Thickness 6.5 max.

A

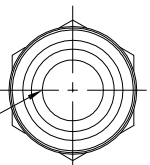
B



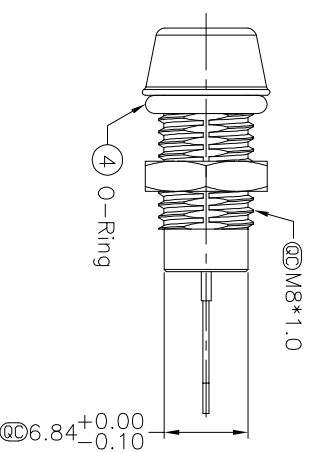
Reverse Voltage: DC 5V  
 Operating Temperature: -30°C~+80°C  
 O-Ring: Silicone, Gray  
 Screw Nut: Copper Alloy, Nickel Plating  
 For Panel Thickness 6.5 max.

D

E



① LED



③ Liquid Glue

E

F

G

RoHS compliant

Scale	Free
TOLERANCE	
.X	±0.25
.XX	±0.10
.XXX	±0.05
Angle	±1°

G

H

1

2

3

4

5

6

7

Scale	Free
TOLERANCE	
.X	±0.25
.XX	±0.10
.XXX	±0.05
Angle	±1°

Id.	Modification	Date	Name
①	Drawn	11.03.2014	Winnie

Date	Name
11.03.2014	Winnie
11.03.2014	Winnie

Customer-No.	Drawing-No.	Replace
ASSMANN WSW-No.	A-LED8-1ABAS-MR7-1	ASS 6224 CO
		rev00
		Sheet

H

**ASSMANN**  
 WSW components