

PART NUMBER	REV	FIRST USED	TERMINATOR	FEED TYPE	DESCRIPTION
1339780-1	A		BENCH & LEADMAKER	MECH POST FEED	HD-I APPLICATOR
7-1339780-1	A		BENCH & LEADMAKER	MECH POST FEED	-1 AND SPARE PARTS
7-1339780-7	A				SPARE PARTS KIT

CRIMP DATA ESCUBEDO TERMINAL AMP CRIMP SPECS

TERMINAL NAME: FASTON TYPE 4.8 SERIES.

CRIMP	SIZE	TYPE	RANGE
WIRE	2.03 [.080 IN]	F	0.50mm ² - 1.00mm ²
INSUL	3.05 [.120 IN]	F	1.80-2.50 [.071-.098 IN]
WIRE STRIP LENGTH		APPL INSTRUCTION	
3.91-4.67 [.154-.184 IN]		408-8323	

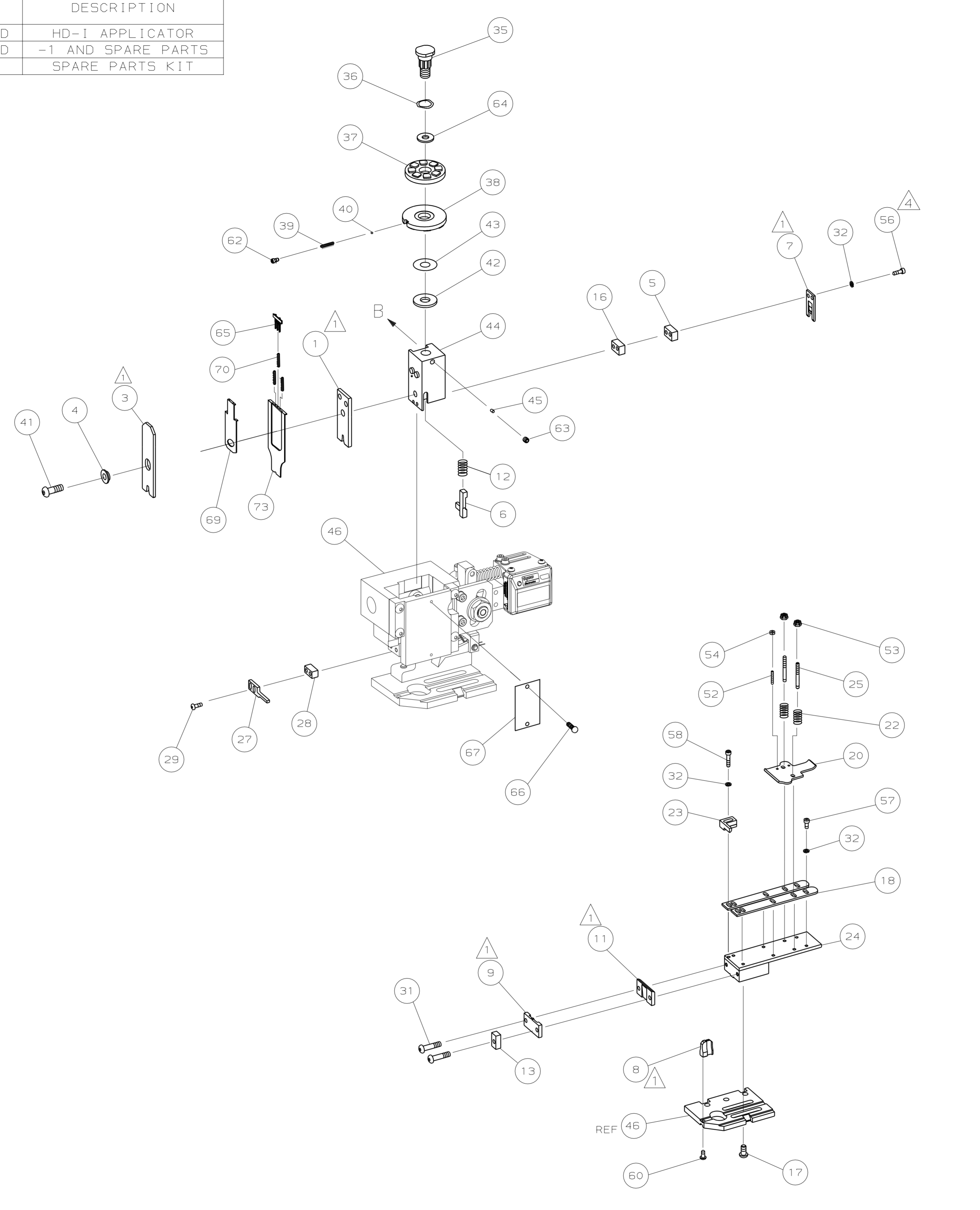
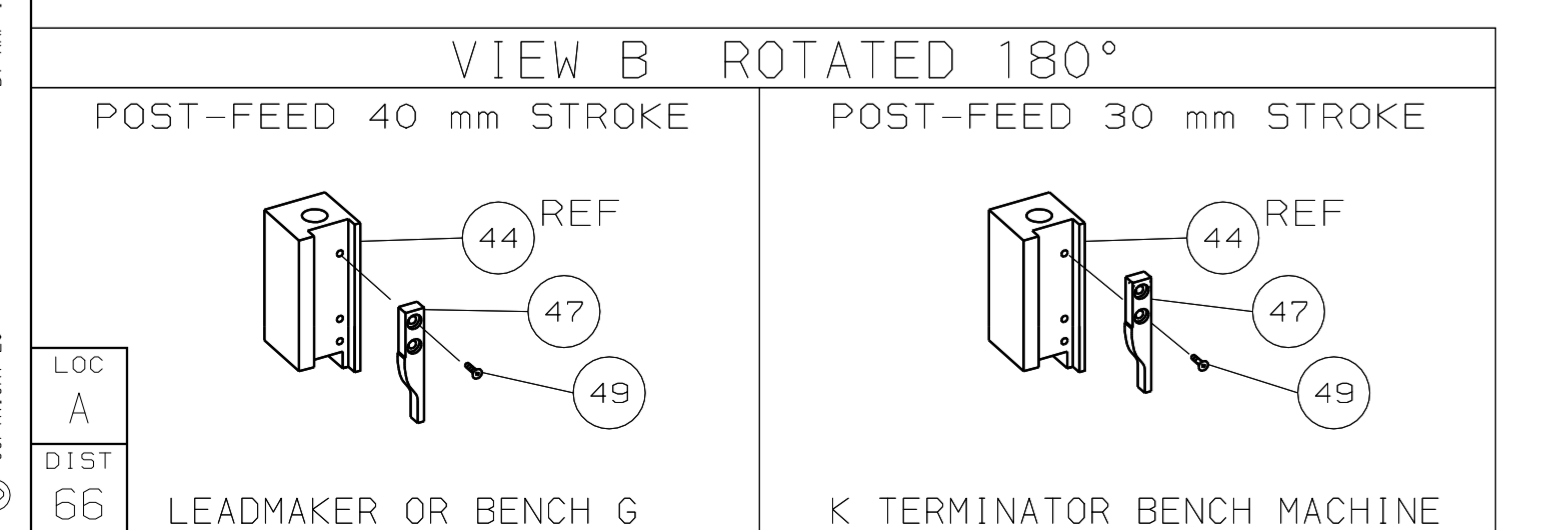
TERMINAL APPL SPEC: NONE FEED: 17.50 [.689 IN]

TERMINALS APPLIED

AMP PN	MFR PN			
1572818-1	4412.00	-	-	-
1572818-2	4412.02	-	-	-
1572818-3	4412.04	-	-	-
1572818-4	4412.30	-	-	-
1572818-5	4412.32	-	-	-
1572818-6	4412.70	-	-	-

WIRE SIZE	CRIMP HEIGHT	PIN PN AND LENGTH [IN]
1.00mm ²	1.55 ±0.05 [.061 ±.002 IN]	354779-3 [.3005]
0.75mm ²	1.45 ±0.05 [.057 ±.002 IN]	1-354779-1 [.3045]
0.50mm ²	1.35 ±0.05 [.053 ±.002 IN]	2-354779-1 [.3090]

- RECOMMENDED SPARE PARTS.
- GREASE RAM, CAM, CAM FOLLOWER AND FEED ROD LIGHTLY.
- LUBRICATE DAILY PER THE APPLICATOR INSTRUCTION SHEET SUPPLIED WITH THE APPLICATOR.
- CUT TO LENGTH AT ASSEMBLY.
- ALL CRIMP DATA CALCULATED BY TYCO ELECTRONICS UK LTD.



QTY	REQD	PER ASSY	PART NO	DESCRIPTION	ITEM NO
-	1	1	1490525-1	DEPRESSOR, WIRE	73
-	1	1	1339780	PRINT, APPLICATOR LOG SHEET	72
-	1	1	1338705-2	DOCUMENTATION PACKAGE	71
-	3	3	2-23147-2	SPRING, DEPRESSOR	70
-	1	1	1490524-2	SPACER, DEPRESSOR	68
-	1	1	461264-1	PLATE, IDENTIFICATION	67
-	2	2	21017-2	SCR,DRIVE (#2X.19) ID PLATE	66
-	1	1	1424350-1	HOLDER, PIN, WIRED	65
-	1	1	986950-1	WASHER, FLAT PRECISION	64
-	1	1	3-18031-0	SCR,SKT SET (M6X6) RAM	63
-	1	1	18023-9	SCR,SKT CAP (M4X6) CP DSC	62
-	1	1	18024-7	SCR,BHC (M4X10) ANVIL	60
-	2	2	1-18023-3	SCR,SHC (M4X16) HOLD DOWN	58
-	5	5	18023-9	SCR,SHC (M4X6) STRIP GUIDE	57
-	2	2	1-18023-2	SCR,SHC (M4X12) SLUG BLADE	56
-	2	2	18029-1	NUT, HEX (M3) DRAG	54
-	2	2	986965-1	NUT, HEX SL (M4) DRAG STUD	53
-	2	2	2-18032-2	SCR,SKT SET (M3X10) DRAG	52
-	1	1	18024-3	SCR,BHC (M3X10) CAM	49
-	1	1	1338676-1	CAM, POST-FEED 30 & 40 mm ST	47
-	1	1	1338662-1	APPLICATOR, BASIC (SUBASSY)	46
-	1	1	690191-1	PLUG, NYLON	45
-	1	1	1320998-1	RAM	44
-	1	1	690125-1	WASHER, LAMINATED	43
-	1	1	690124-1	WASHER, RAM	42
-	1	1	2-18024-6	SCREW,BHC (M8X25) CRIMPER	41
-	1	1	23241-1	BALL, STEEL	40
-	1	1	2-22278-7	SPRING, COMPRESSION	39
-	1	1	1320922-1	DISC, INSULATION	38
-	1	1	354777-1	WIRE DISC, PLASTIC	37
-	1	1	22480-5	WASHER, SPRING	36
-	1	1	690212-1	POST, RAM	35
-	9	9	18025-2	WASHER, LOCK (M4) SHEAR BL	32
-	2	2	1-18024-0	SCR,BHC (M4X20) SHEAR PL	31
-	2	2	18024-8	SCR,BHC (M4X12) STRIPPER	29
-	1	1	3-690451-2	SPACER, STRIPPER	28
-	1	1	240639-1	STRIPPER	27
-	2	2	1320906-1	DRAG, STUD	25
-	1	1	1320995-1	PLATE, STRIP GUIDE	24
-	1	1	240825-2	PLATE, STRIP HOLD DOWN	23
-	2	2	4-22281-1	SPRING, DRAG	22
-	1	1	1338665-1	DRAG, STOCK	20
-	2	2	1338663-4	GUIDE, LOWER STRIP	18
-	4	4	1-18024-8	SCR,BHC (M6X12) STRIP GD PL	17
-	1	1	1338708-1	SPACER, SLUG BLADE	16
-	1	1	690481-3	SPACER, HOLD DOWN	13
-	1	1	23846-1	SPRING, HOLD DOWN	12
-	1	1	240644-1	PLATE, REAR SHEAR	11
-	1	1	690495-6	PLATE, FRONT SHEAR	9
-	1	1	2-1333216-5	ANVIL	8
-	1	1	690474-4	BLADE, SLUG	7
-	1	1	2-455892-0	HOLD DOWN, TERMINAL	6
-	1	1	1-240641-1	SPACER, SLUG BLADE	5
-	1	1	238009-1	SPACER, BLOCK CRIMPER	4
-	1	2	4-1213077-7	CRIMPER, INSULATION	3
-	1	2	1-456405-5	CRIMPER, WIRE	1

QTY	REQD	PER ASSY	PART NO	DESCRIPTION	ITEM NO
-	77	-71	-1	REVISION OF EACH ASSY NO (WHEN BLANK, USE DWG REVISION)	

DIMENSIONS: mm [INCHES] MATL: - HT TR: - FIN: -
DO NOT SCALE PRINT.
TOLERANCES UNLESS OTHERWISE SPECIFIED:
1 PLC DEC ±
2 PLC DEC ±
3 PLC DEC ±
ANGLES ±
SURF TEXTURE: ✓
REMOVE BURRS, BREAK SHARP EDGES RO.38 MAX

DR: 030CT05 APP: 030CT05 F.BACKHURST
L.L.OFTHOUSE REL: 07NOV05 L.L.OFTHOUSE
NAME: END FEED HD-I APPLICATOR MACHINE REF: HD-I APPL
SCALE: - DWG NO: 1339780 SHEET: 1 OF 1 REV: A

CAGE CODE: 00779 CUSTOMER AND ASSEMBLY DRAWING

THIS DRAWING IS A CONTROLLED DOCUMENT.

LAYOUT L1339780
SET UP GAGE 458638-3

RELEASED FOR PUBLICATION
BY AMP INCORPORATED. ALL RIGHTS RESERVED.
THIS DRAWING IS UNPUBLISHED.
COPYRIGHT 20