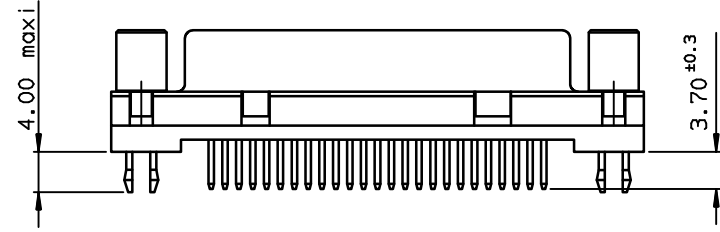
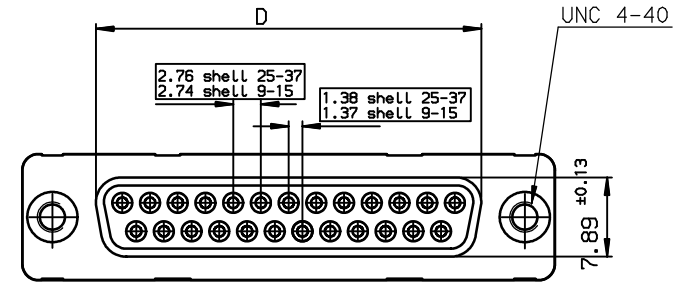
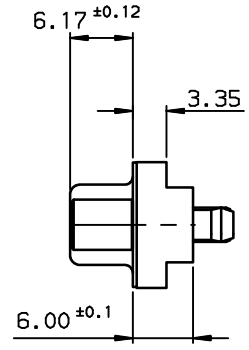
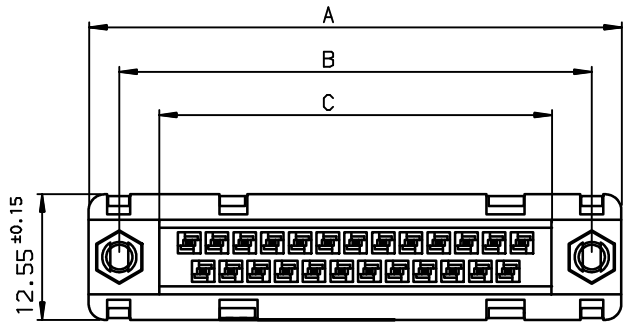


Copyright FCI.



TIN LEAD PART NUMBER

SHELL	A±0.38	B±0.12	C±0.10	D±0.25	E±0.07	PART NUMBER
09	30.81	24.99	16.96	16.21	10.96	D09S24B.GV00
15	39.14	33.32	25.18	24.54	19.18	D15S24B.GV00
25	53.03	47.04	39.12	38.25	33.12	D25S24B.GV00
37	69.32	63.50	55.68	54.71	49.68	D37S24B.GV00

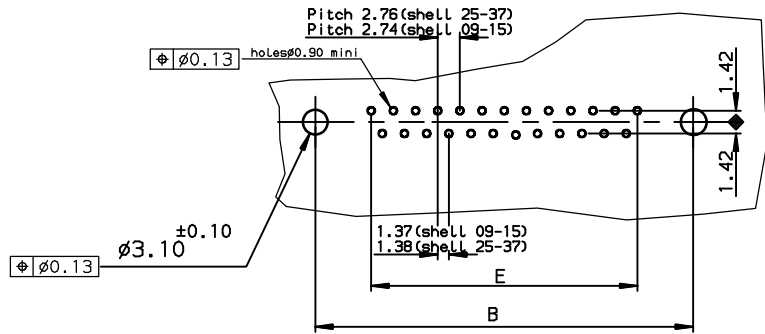
Plating: 4 --> flash AU
Plating: 6 --> 0.76µ AU

LEAD FREE PART NUMBER

SHELL	A±0.38	B±0.12	C±0.10	D±0.25	E±0.07	PART NUMBER
09	30.81	24.99	16.96	16.21	10.96	D09S24B.GV00LF
15	39.14	33.32	25.18	24.54	19.18	D15S24B.GV00LF
25	53.03	47.04	39.12	38.25	33.12	D25S24B.GV00LF
37	69.32	63.50	55.68	54.71	49.68	D37S24B.GV00LF

Plating: 4 --> flash AU
Plating: 6 --> 0.76µ AU

PC card drilling dimensions(after plating)
(thickness 2.40±0.20mm)



GENERAL CHARACTERISTICS AND ROHS INFORMATIONS:
SEE DRAWING C01-8646-0000

rev	ecn no	dr	date
B	-	-	1996/09/09
D	LS05-001	MPE	2005/03/10
E	LS05-0056	MPE	2005/06/24
F	LS06-0097	LGO	2006/07/29
-	-	-	-
-	-	-	-
-	-	-	-

www.fciconnect.com		surface ISO 1302 ✓	tolerance std ISO 406 ISO 1101	projection mm
Dr LELEON 1992/09/16		TOLERANCES UNLESS OTHERWISE SPECIFIED		size A3
Eng PESSON 1992/09/16	Chr LEGARE 1992/09/16	ANGULAR	LINEAR	Scale 2
Appr LEGARE 1992/09/16	Product family	0.x ±0.1	0.xx ±0.1	ECN LS06-0097
FCI title FEMALE CONNECTOR STD EURO straight solder type for		D-SUB		Spec ref -
catalog no		C01-8646-0124		Rev. F
		CUSTOMER		sheet 1 of 1