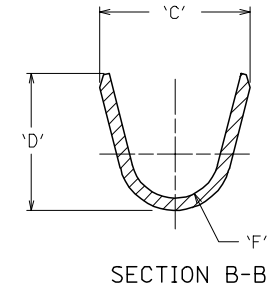
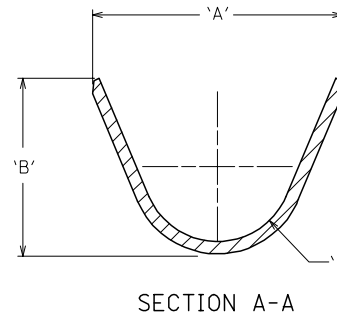
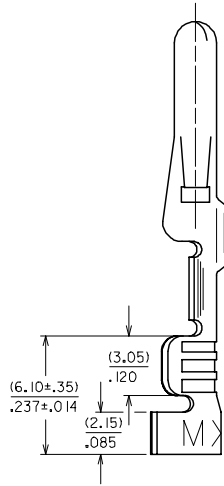
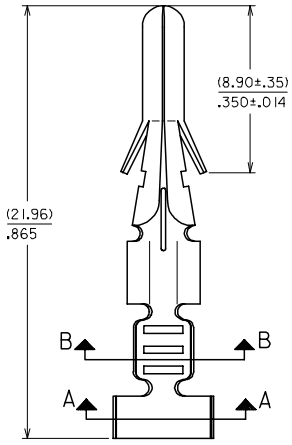
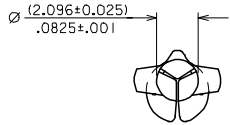


10 9 8 7 6 5 4 3 2 1

ENG NO.	ENG NO.	FORM	'A'	'B'	'C'	'D'	'E'	'F'
002-08-1335	8980-6L-LF	LOOSE, 14-20 AWG WIRE	(4.44) .175	(3.39) .133	(3.02) .119	(3.61) .142	(1.23) .048	(0.61) .024
002-08-1337	8980-6L1-LF	LOOSE, 18-22 AWG WIRE	(3.28) .129	(2.58) .102	(2.44) .096	(2.58) .102	(0.91) .036	(0.53) .021

NOTES:

- THIS TERMINAL FOR USE WITH HOUSING P/N, 8981-4M*
- FINISH: (.00089)/.000035 MIN. TIN OVER (.00051)/.000020 MIN. NICKEL.
- MATERIAL: (.025)/.010 THK PHOS BRONZE, ALLOY CA 51000.



OBS P/N EC NO: S2007-0291 DRWN:SKANG CHKD:MLONG APPR:SKTOH	2006/09/19 2006/09/20 2006/09/21	DESCRIPTION REV	QUALITY SYMBOLS	GENERAL TOLERANCES (UNLESS SPECIFIED)	DIMENSION STYLE	SCALE	DESIGN UNITS	THIRD ANGLE PROJECTION
			$\nabla = 0$ $\sphericalangle = 0$	mm INCH 4 PLACES ± --- ± --- 3 PLACES ± --- ± .008 2 PLACES ± 0.20 ± --- 1 PLACE ± --- ± --- ANGULAR ± 3 °	MM/IN	NTS	METRIC	
			DRAFT WHERE APPLICABLE MUST REMAIN WITHIN DIMENSIONS	SEE TABLE	DRAWN BY: JWAN DATE: 1994/11/03 CHECKED BY: ERPOH DATE: 1994/11/04 APPROVED BY: SKTOH DATE: 1994/11/04	TITLE	PIN CRIMP TYPE DIA. (2.13)/.084	
					MATERIAL NO. SIZE: A3	DOCUMENT NO. SD-8980-6*	MOLEX INCORPORATED SHEET NO. 1 OF 1	

9 8 7 6 5 4 3 2 1