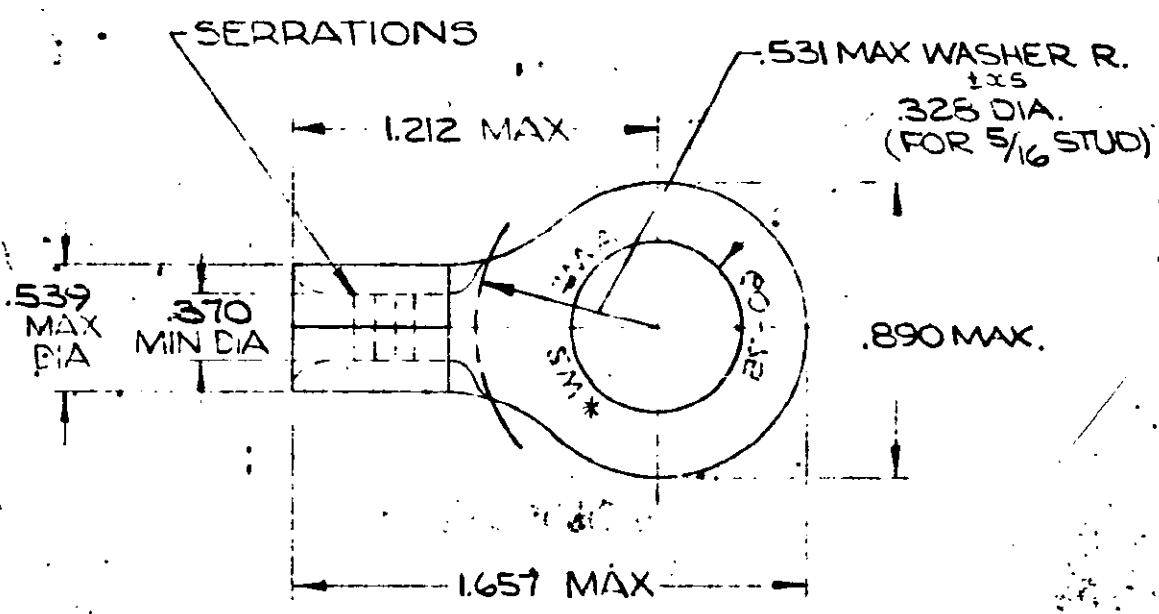


DRAWING MADE IN AMERICAN PROJECTION

LOC 3 14 PRINT DISC

© 1965 BY AMP INCORPORATED. ALL RIGHTS RESERVED. AMP PRODUCTS COVERED BY PATENTS AND/OR PATENTS PENDING.

REVISIONS			
LTR	DESCRIPTION	DATE	APPROVED
C	RE-DRAWN & REV. FC-5567	11-19-70	<i>Jme</i>
D	ADD -1 87-3060-041	2/14/92	



⚠ SEE RESTRICTED CUSTOMER DRAWING 35183-1

⚠ 35183-1  
35183  
PART NO

UNLESS OTHERWISE SPECIFIED DIMENSIONS ARE IN INCHES.  
TOLERANCES ON:  
DECIMALS : .008  
ANGLES : 5°

MATERIAL : 1003  
COPPER .070 THK  
(00-C-576)

TIN PLATE  
(MIL-T-10727)

ANNEALED

CONTRACT NO. \_\_\_\_\_

DR. *Wayne Williams* 11-4-70

CHK. *John Evonings* 11-19-70

APPD. *L. Walsh* 11-19-70

REL. *Hyung* 11-23-70

DSGN APPD \_\_\_\_\_

OTHER APPD \_\_\_\_\_

**AMP** AMP INCORPORATED  
HARRISBURG, PENNSYLVANIA

NAME WIRE TERMINAL  
SOLISTRAND - RING TONGUE  
WIRE SIZE : #2

SIZE	CODE IDENT NO.	NUMBER
A	00779	35183

CALL NEAREST CUSTOMER DRAWING 1