

DO NOT SCALE FROM THIS PRINT

TABLE 1	
No. OF POS.	MAX COPLANARITY
0-35	.004 [.10]
40-50	.006 [.15]

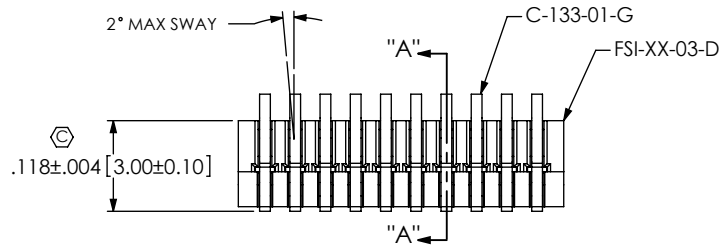
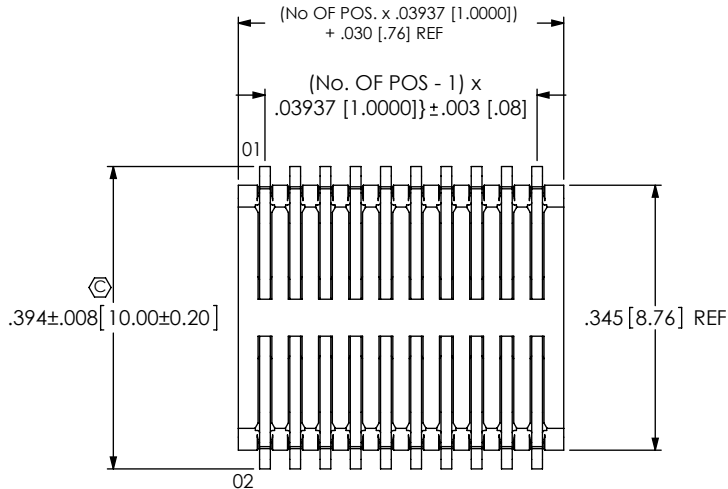


FIG 1
FSI-110-03-G-D SHOWN

FSI-1XX-03-X-D-X-XX-XX

No OF POSITIONS
 THREADED: -10, -20, -30, -40, -50
 NON-THREADED: -05 THRU -50
 [IN MULTIPLES OF 5] (SEE NOTE 8)

BODY HEIGHT
 -03: 3mm HEIGHT
 (USE C-133-01-X)

PLATING
 -G: GOLD
 (USE C-133-01-G)
 -H: HEAVY GOLD
 (USE C-133-01-H)

ROW SPECIFICATION
 -D: DOUBLE
 (USE FSI-XX-03-D)

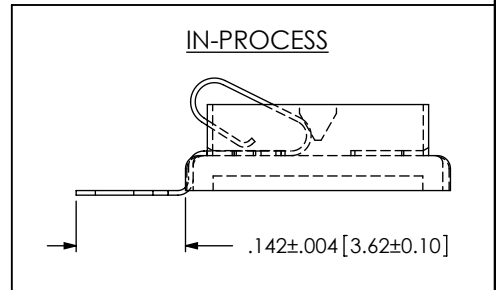
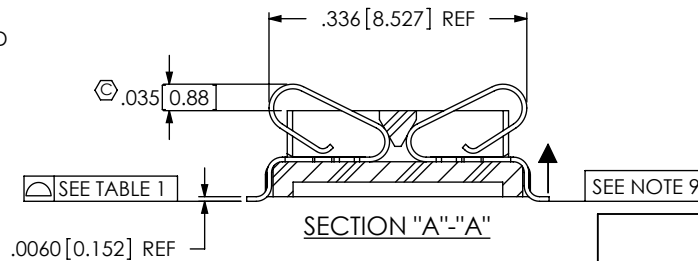
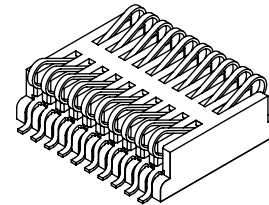
OPTIONS
 -TR: TAPE & REEL PACKAGING
 (BLANK FOR TUBED PARTS)
 -K: POLYAMIDE FILM PAD
 (USE K-500-300) (SEE FIGS 4 & 5, SHEET 3)
 -SD: SCREW DOWN OPTION
 (USE THS-4-40-.560-XX) (AVAILABLE ON 10, 20 & 30 POS. WITH -AD ONLY; SEE SHEET 4) (SEE NOTE 7)

OPTION UNAVAILABLE WITH ANY THREADED INSERT OPTION

ALIGNMENT PIN OPTION
 -AT: TOP SIDE (USE FSI-XX-03-D-AT-X)
 -AB: BOTTOM SIDE (USE FSI-XX-03-D-AB-X)
 -AD: DUAL (TOP & BOTTOM)
 (USE FSI-XX-03-D-AD-X, SEE FIG 2)
 **LC: LOCKING CLIP
 BLANK FOR NO ALIGNMENT PIN

THREADED INSERT OPTION
 -E: THREADED INSERT (ENGLISH)
 (USE INS-C-2-56-100, SEE FIG 3, SHT 2)
 -M: THREADED INSERT (METRIC)
 (USE INS-C-M2-100-N, SEE FIG 3, SHT 2)
 LEAVE BLANK FOR NO THREADED INSERT

* = NOT RELEASED FOR PRODUCTION
 ** = NOT TOOLED



NOTES:

- ⊕ REPRESENTS A CRITICAL DIMENSION.
- MINIMUM PUSHOUT FORCE: 12 oz.
- LOAD INSERTS IN DIRECTION OF THE ARROW USING HAND LOAD THERMAL INSERTION PRESS.
- THREADED INSERT MUST BE ABLE TO HANDLE 20 in-oz's OF TORQUE MIN WITHOUT ROTATING OR "LOOSENING".
- THREADED INSERT RETENSION TO BE 7lbs. MIN.
- THREADED INSERT TO BE FLUSH TO .005[0.13] BELOW HOUSING SURFACE.
- SD OPTION: RETENTION TO BE 3lb MIN AND MUST WITHSTAND 6 in-oz's OF TORQUE.
- APPLICATIONS REQUIRING 40-50 POSITIONS WITHOUT THREADED INSERTS, PLEASE CONTACT SAMTEC INTERCONNECT PROCESSING GROUP.
- MAXIMUM ALLOWABLE SHEAR BURR: .003 [.08], IN DIRECTION SHOWN.

UNLESS OTHERWISE SPECIFIED, DIMENSIONS ARE IN INCHES.
 TOLERANCES ARE:
 DECIMALS ANGLES
 .XX: ±.01 [.2] 2°
 .XXX: ±.005 [.13]
 .XXXX: ±.0020 [.050]

PROPRIETARY NOTE
 * THIS DOCUMENT CONTAINS CONFIDENTIAL AND PROPRIETARY INFORMATION AND ALL DESIGN, MANUFACTURING, REPRODUCTION, USE, PATENT RIGHTS AND SALES RIGHTS ARE EXPRESSLY RESERVED BY SAMTEC, INC. THIS DOCUMENT SHALL NOT BE DISCLOSED, IN WHOLE OR PART, TO ANY UNAUTHORIZED PERSON OR ENTITY NOR REPRODUCED, TRANSFERRED OR INCORPORATED IN ANY OTHER PROJECT IN ANY MANNER WITHOUT THE EXPRESS WRITTEN CONSENT OF SAMTEC, INC.

MATERIAL: DO NOT SCALE DRAWING SHEET SCALE: 4:1
 INSULATOR: VECTRA E130i
 CONTACT: BeCu
 INSERT: BRASS

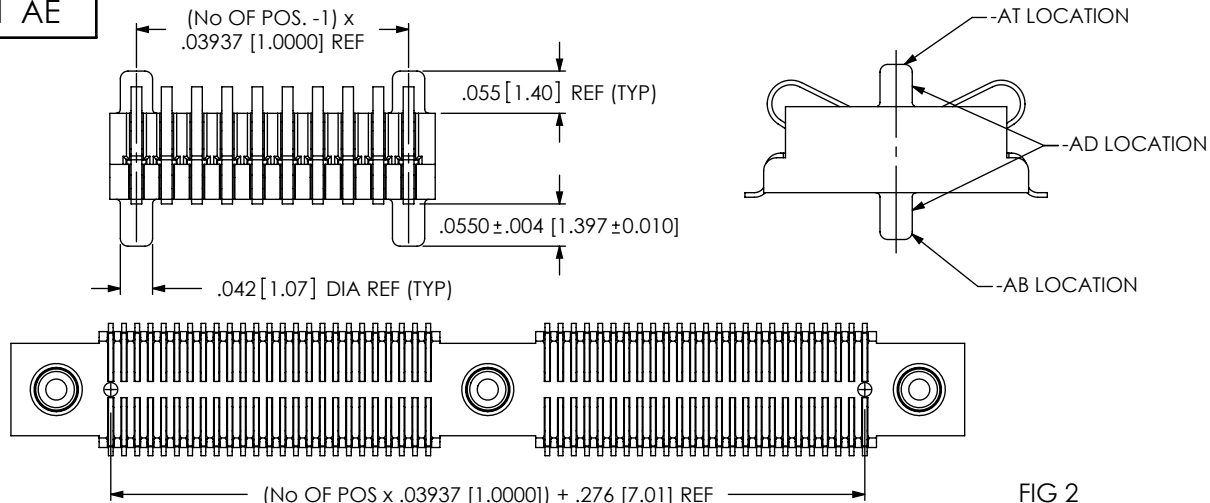
DESCRIPTION: 1mm SINGLE ELEMENT INTERFACE

DWG. NO. FSI-1XX-03-X-D-X-XX-XX

BY: BRATCHER 1/27/99 SHEET 1 OF 4

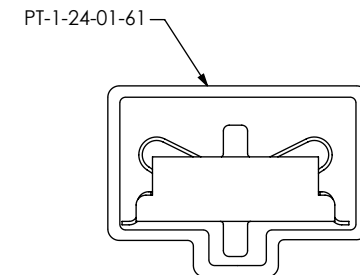


520 PARK EAST BLVD. NEW ALBANY, IN 47150
 PHONE: 812-944-6733 FAX: 812-948-5047
 e-Mail: info@SAMTEC.com code: 53322

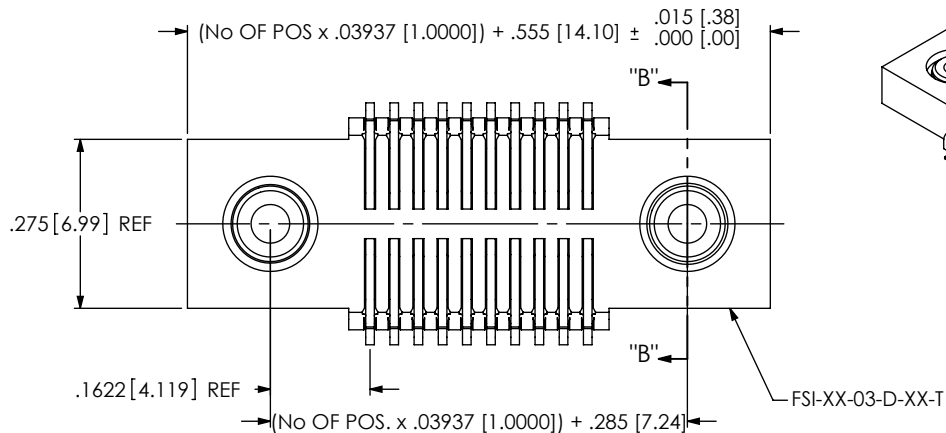


ALIGNMENT PIN OPTION
FOR -40- & -50 WITH -M OR -E OPTION
(SHOWN: FSI-150-03-G-D-M-AD)

FIG 2
ALIGNMENT PIN OPTIONS
(FSI-110-03-G-D-AD SHOWN)



NOTE: PARTS ARE TO BE PACKAGED IN PT-1-24-01-61 TUBES WITH TWO TP-03 PLUGS PER TUBE.



-M & -E: THREADED OPTIONS
(FSI-110-03-G-D-M SHOWN)
(EQUATIONS APPLY TO -10, -20 & -30 ONLY)

TABLE 2: INSERT OPTION		
OPTION	INSERT	THREAD
-E	INS-C-2-56-100	2 x 56
-M	INS-C-M2-100-N	M2.0 x 4

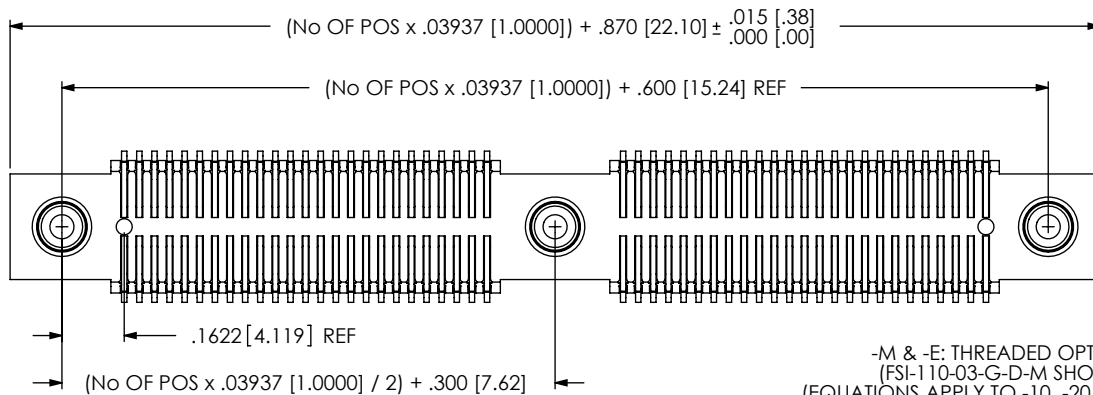
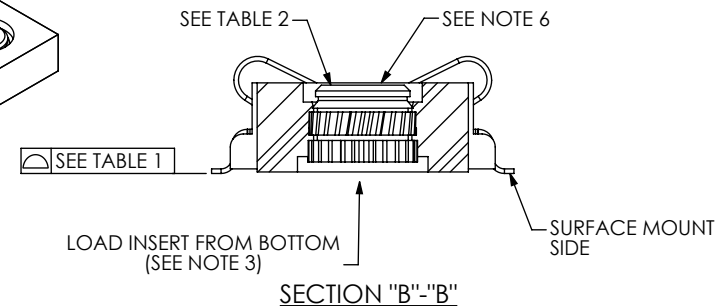


FIG 3
FOR -40- & -50 WITH -M OR -E OPTION
(SHOWN: FSI-150-03-X-D-M-AD)

PROPRIETARY NOTE
THIS DOCUMENT CONTAINS CONFIDENTIAL AND PROPRIETARY INFORMATION AND ALL DESIGN, MANUFACTURING, REPRODUCTION, USE, PATENT RIGHTS AND SALES RIGHTS ARE EXPRESSLY RESERVED BY SAMTEC, INC. THIS DOCUMENT SHALL NOT BE DISCLOSED, IN WHOLE OR PART, TO ANY UNAUTHORIZED PERSON OR ENTITY NOR REPRODUCED, TRANSFERRED OR INCORPORATED IN ANY OTHER PROJECT IN ANY MANNER WITHOUT THE EXPRESS WRITTEN CONSENT OF SAMTEC, INC.



520 PARK EAST BLVD, NEW ALBANY, IN 47150
PHONE: 812-944-6733 FAX: 812-948-5047
e-Mail: info@SAMTEC.com code: 55322

DO NOT SCALE DRAWING

SHEET SCALE: 4:1

DESCRIPTION: 1mm SINGLE ELEMENT INTERFACE

DWG. NO. FSI-1XX-03-X-D-X-XX-XX

BY: BRATCHER 1/27/99

SHEET 2 OF 4

FIG 4

-K: POLYAMIDE FILM PAD
 (.098 [2.50] DIA PAD USED ON ALL POSITIONS
 EXCEPT -40 & -50 POSITIONS WITH
 THREADED INSERT OPTION)

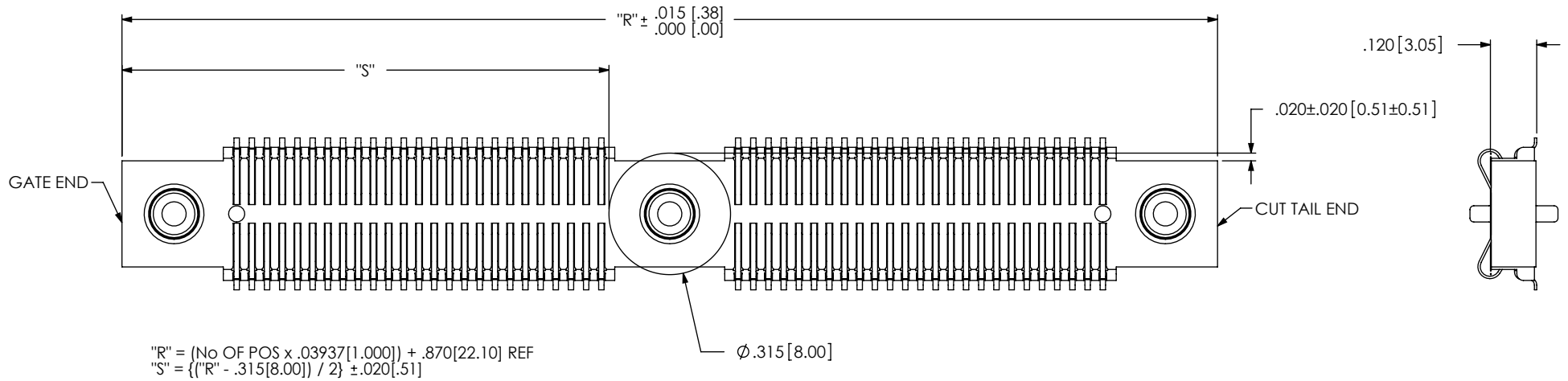
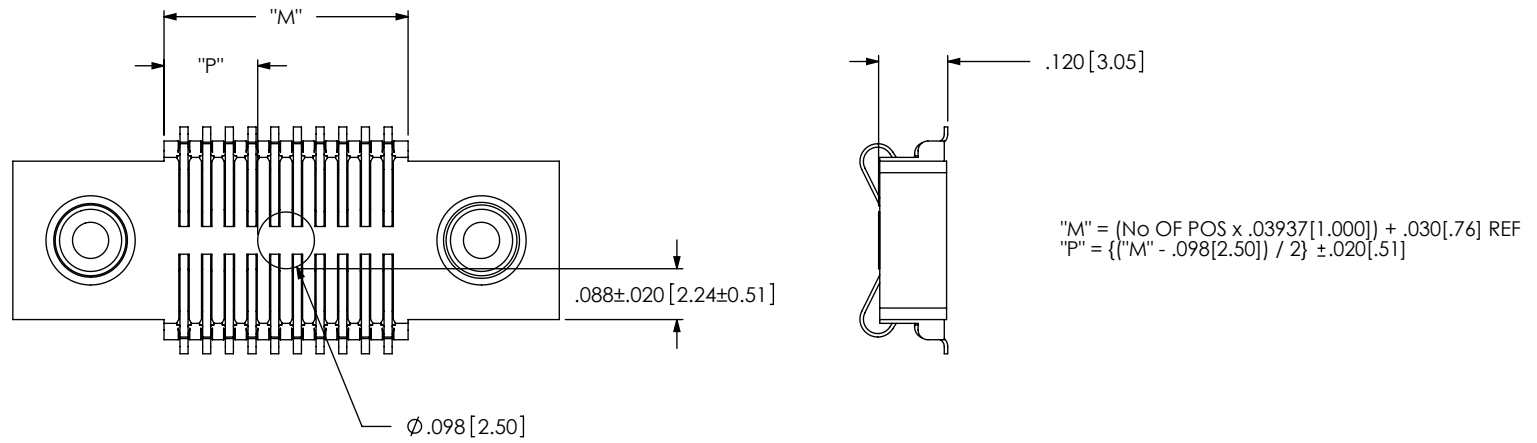

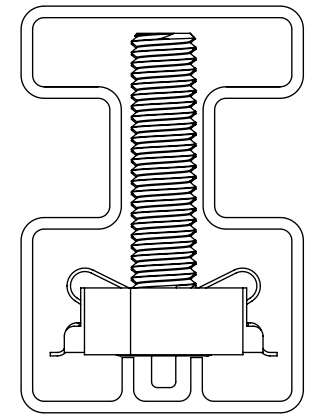
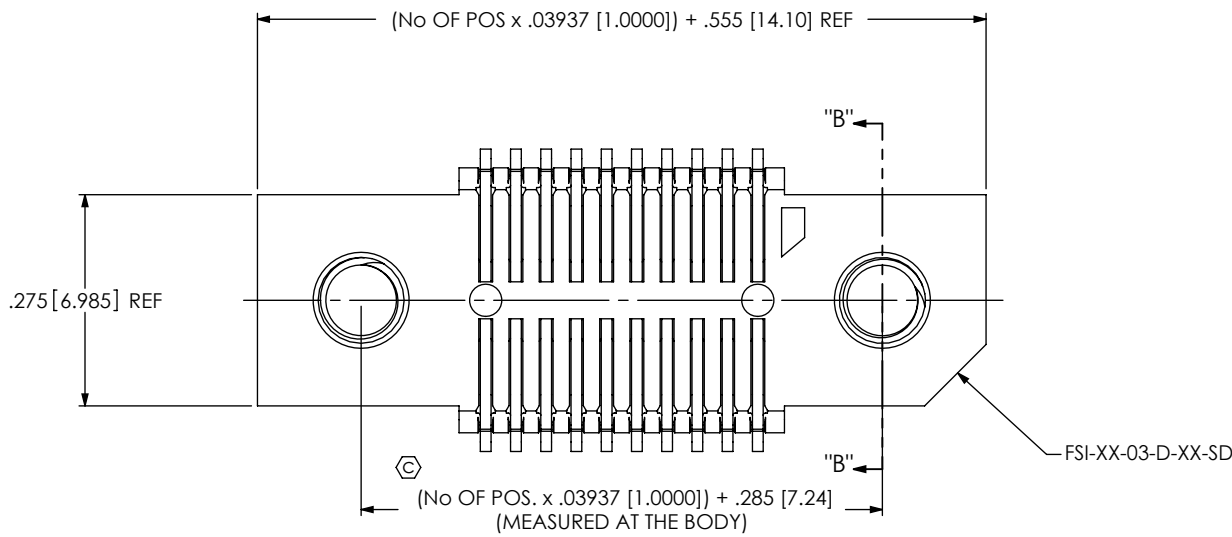


FIG 5
 -K: POLYAMIDE FILM PAD
 (.315 [8.00] DIA PAD USED ONLY ON
 -40 & -50 POSITIONS WITH
 THREADED INSERT OPTION)

DO NOT SCALE DRAWING SHEET SCALE: 3:1	* PROPRIETARY NOTE * THIS DOCUMENT CONTAINS CONFIDENTIAL AND PROPRIETARY INFORMATION AND ALL DESIGN, MANUFACTURING, REPRODUCTION, USE, PATENT RIGHTS AND SALES RIGHTS ARE EXPRESSLY RESERVED BY SAMTEC, INC. THIS DOCUMENT SHALL NOT BE DISCLOSED, IN WHOLE OR PART, TO ANY UNAUTHORIZED PERSON OR ENTITY NOR REPRODUCED, TRANSFERRED OR INCORPORATED IN ANY OTHER PROJECT IN ANY MANNER WITHOUT THE EXPRESS WRITTEN CONSENT OF SAMTEC, INC.	 520 PARK EAST BLVD, NEW ALBANY, IN 47150 PHONE: 812-944-6733 FAX: 812-948-5047 e-Mail: info@SAMTEC.com code: 55322
	DESCRIPTION: 1mm SINGLE ELEMENT INTERFACE	DWG. NO. FSI-1XX-03-X-D-X-XX-XX
	BY: BRATCHER 1/27/99	SHEET 3 OF 4



PACKAGING VIEW

NOTE:

PARTS ARE TO BE PACKAGED IN PT-FSI001-03-SD TUBES WITH TWO TP-03 PLUGS PER TUBE.

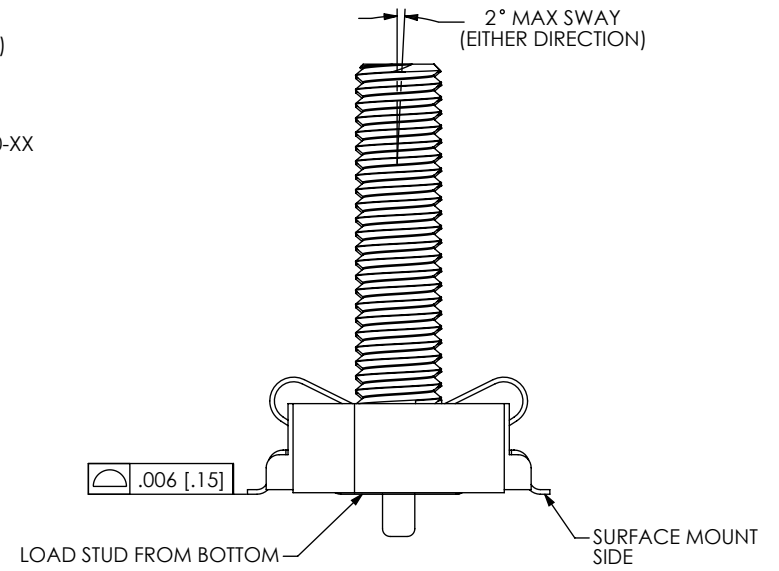
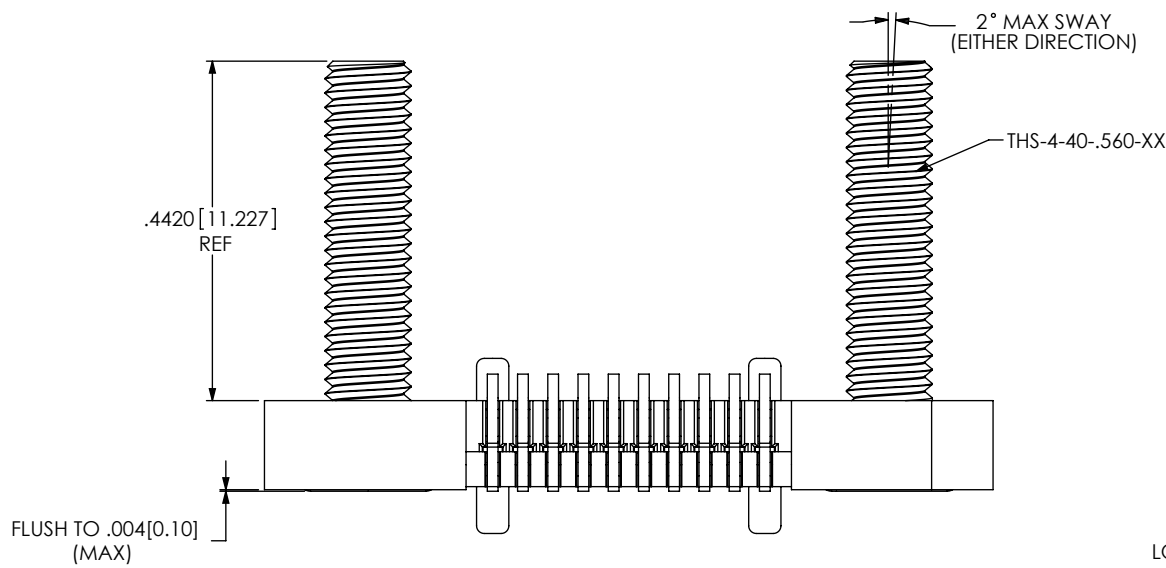


FIG 6
 -SD: SCREW DOWN OPTION
 (FSI-110-03-G-D-AD-SD SHOWN)
 (AVAILABLE IN POS -10, -20 & -30 WITH -AD OPTION ONLY)
OPTION UNAVAILABLE WITH ANY THREADED INSERT OPTION

<p>DO NOT SCALE DRAWING</p> <p>SHEET SCALE: 3:1</p>	<p>PROPRIETARY NOTE</p> <p>THIS DOCUMENT CONTAINS CONFIDENTIAL AND PROPRIETARY INFORMATION AND ALL DESIGN, MANUFACTURING, REPRODUCTION, USE, PATENT RIGHTS AND SALES RIGHTS ARE EXPRESSLY RESERVED BY SAMTEC, INC. THIS DOCUMENT SHALL NOT BE DISCLOSED, IN WHOLE OR PART, TO ANY UNAUTHORIZED PERSON OR ENTITY NOR REPRODUCED, TRANSFERRED OR INCORPORATED IN ANY OTHER PROJECT IN ANY MANNER WITHOUT THE EXPRESS WRITTEN CONSENT OF SAMTEC, INC.</p>	
	<p>samtec</p> <p>520 PARK EAST BLVD, NEW ALBANY, IN 47150 PHONE: 812-944-6733 FAX: 812-948-5047 e-Mail: info@SAMTEC.com code: 55322</p>	
	<p>DESCRIPTION: 1mm SINGLE ELEMENT INTERFACE</p> <p>DWG. NO. FSI-1XX-03-X-D-X-XX-XX</p>	<p>BY: BRATCHER 1/27/99</p>