



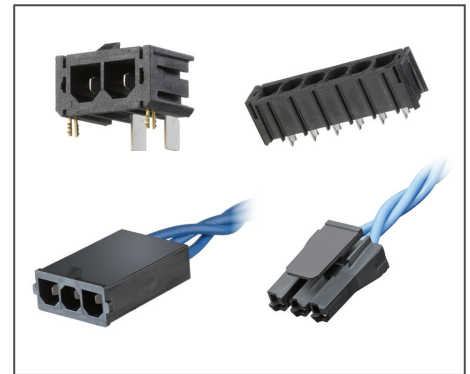
Delivering 34.0A per blade and withstanding up to +125°C operating temperatures, Super Sabre™ Power Connectors use proven technology for long-term performance and reliability in virtually every industry

Features and Benefits

Current rating 34.0A per blade and 600V	Match requirements for high-current and high-voltage applications in a low-profile design
Operating temperature to +125°C, USCAR-2, level 3	Ideal for high operating temperature uses including automotive and commercial vehicle applications
Silver-plated, high-conductivity alloy terminals	Provide high-performance connections that eliminate fretting corrosion concerns. Affords a lower-cost solution versus gold-plated terminals. Optimized for 10 to 12 AWG wires
Flat-blade terminal design with four independent points of electrical contact	Offers redundant, secondary current paths for long-term performance and reliability. Provides a more reliable electrical connection than circular-style terminals
Wire-to-wire and wire-to-board configurations	Deliver design flexibility with significant space and cost savings. Compatible with lead-free wave soldering and reflow soldering processes
Fully isolated terminals on both mating sides	Provide complete protection against damage or shock
Positive latch and Terminal Position Assurance (TPA) features on receptacle	Prevent terminal backout with mating plug or header in high-vibration applications
UL1977 and UL60950 “Finger Test” certified blade	Meets safety requirements for many consumer applications

Super Sabre™ Power Connector System

- 172042** Vertical PCB Header
- 172043** Right-Angle PCB Header
- 171825** Female Crimp Terminal
- 171826** Male Crimp Terminal
- 172672** Receptacle Housing
- 172673** Plug Housing



Super Sabre™ Power Connector System

Applications

Consumer Appliances / White Goods

- Ranges
- Refrigerators
- Laundry equipment
- Vacuums
- Air conditioners

Networking and Telecommunication Applications

- Switches
- Servers
- Base stations
- Power supplies
- Fan / blower racks

Automotive

- Commercial vehicles

Medical

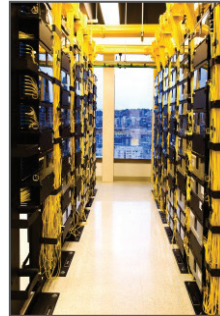
- Patient monitors
- Diagnostic imaging
- Therapeutic devices

Power Supplies

- 100 to 600W units



Medical Imaging



Servers



Appliances

Super Sabre™ Power Connector System

Specifications

Reference Information

Packaging: Trays or Tubes

UL File No.: E29179

CSA File No.: LR19980

Mates With:

Super Sabre Plugs and Headers

Terminal Used: Super Sabre terminals

Designed In: Millimeters

RoHS: Yes

Halogen Free: Yes, Low Halogen

Glow Wire Compliant: Optional

Electrical

Voltage (max.): 600V

Current (max.): 34.0A

Contact Resistance: 5 milliohms

Dielectric Withstanding Voltage: 5000V

Insulation Resistance: 1000 Megohms

Mechanical

Contact Insertion Force: 6.0N

Contact Retention to Housing:

67.0N / 125.0N (TPA)

Insertion Force to PCB (avg.): 34.0N

Mating Force (max.): 17.8N

Unmating Force (min.): 2.2N

Durability (min.): 25 cycles

Physical

Housing:

Headers: LCP

Crimp Housing: Nylon

Contact: High-performance copper alloy

Plating:

Contact Area — Silver

Solder Tail Area — Tin

Underplating — Nickel

PCB Thickness: 1.57 to 3.18mm

Operating Temperature:

-40 to +125°C (per USCAR-2)

Ordering Information

Series No.	Component
172042	Vertical PCB Header
172043	Right-Angle PCB Header
171825	Female Crimp Terminal
171826	Male Crimp Terminal
172672	Receptacle Housing
172673	Plug Housing

www.molex.com/link/supersabre.html