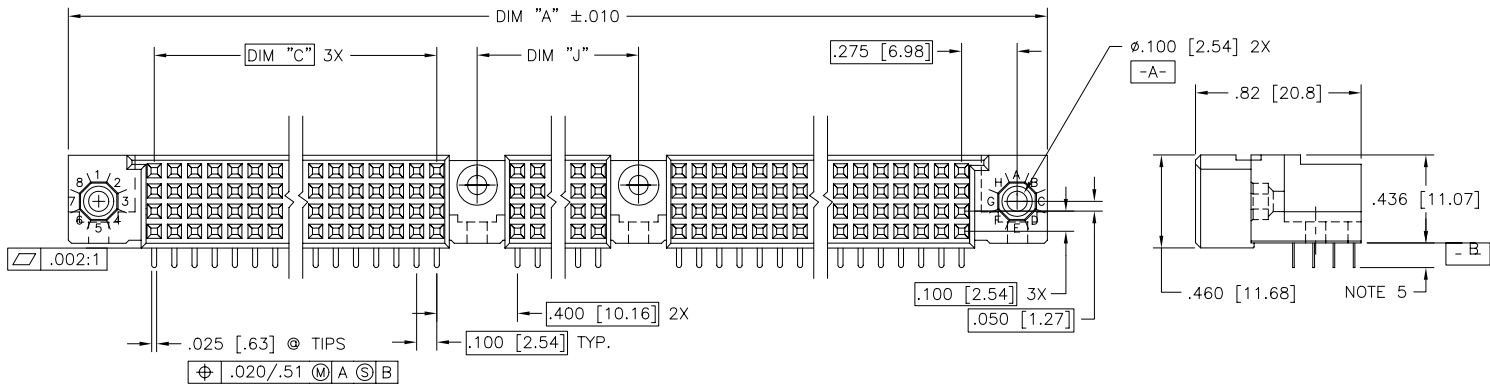
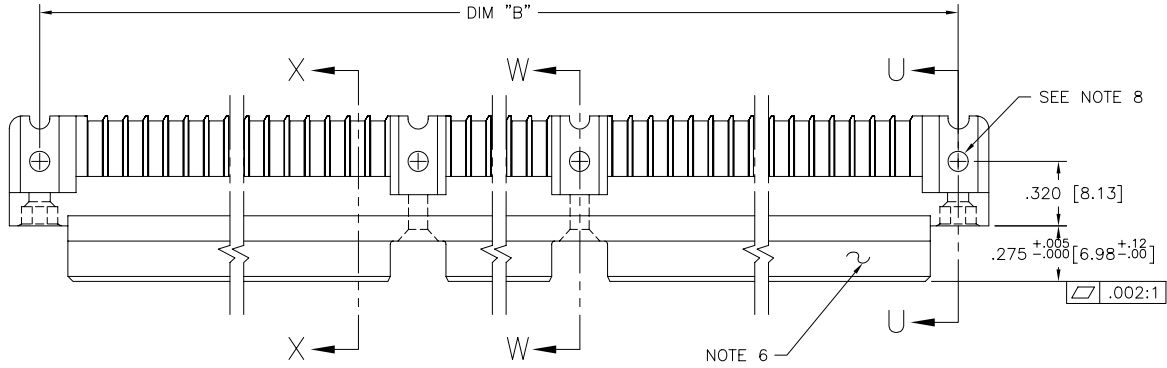


FCI
 FCIconnect.com
 Copyright FCI

PRODUCT NUMBER
SEE NOTE 1

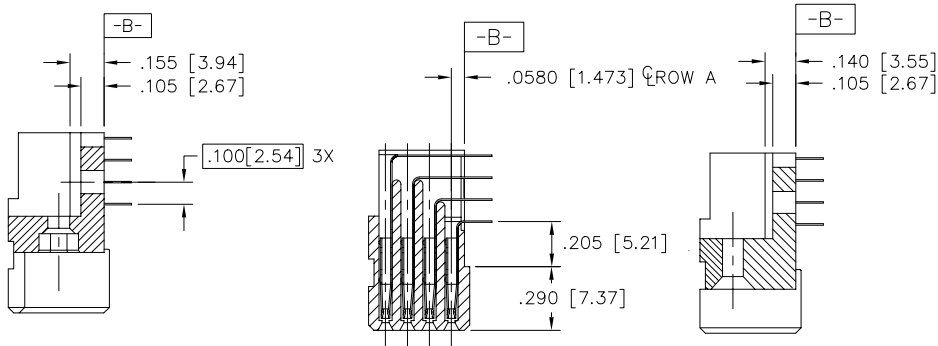


mat'l. code NOTE 3		surface ISO 1302 <input checked="" type="checkbox"/>		tolerance ISO 406 ISO 1101		projection 		product family HPC	
ltr		ecn no		date		tolerances unless otherwise specified		title	
A	v40979	GAH	6/08/94	angles	linear	.xx $\pm .01/.3$	INCH/MM	4 ROW R/A RECEPTACLE	
B	v61331	MSC	9/05/96			.xxx $\pm .005/.13$		SOLDER TAIL, 2 GUIDE PINS	
C	v00259	JWS	1/21/00	$\sigma \pm 2'$.xxxx $\pm .0020/.051$	scale 1:1	dwg no	
D	v01355	CGD	6/28/00	dr	G. PETERS	10/14/93		sheet 1 of 3 size	
E	M06-0261	AEA	5/10/06	engr	S. CLARK	10/14/93		50749 A3	
				chr	S. CLARK	10/18/93		type Product Customer Drawing	
				appd	S. CLARK	10/18/93			
sheet index	revision sheet	E 1	E 2	E 3					

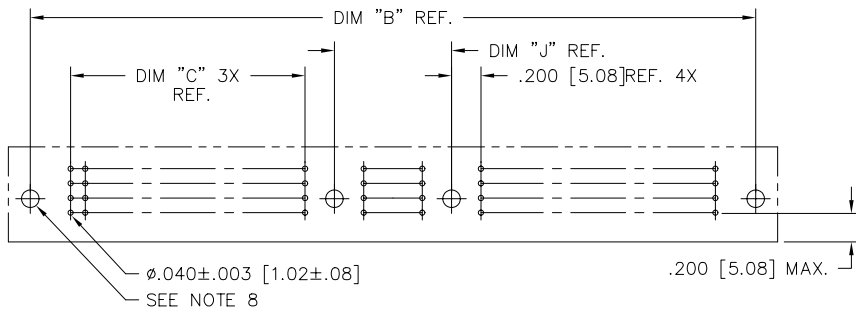
PRODUCT NUMBER	DIM.	LENGTH FORMULAS
SEE NOTE 1	DIM A	$.100/2.54 \times \text{NO. OF COLUMNS} + 1.35/34.3$
	DIM B	$.100/2.54 \times \text{NO. OF COLUMNS} + 1.050/26.67$
	DIM C	$.100/2.54 \times \text{NO. OF COLUMNS DIVIDED BY 3} - .100/2.54$
	DIM J	$.100/2.54 \times \text{NO. OF COLUMNS DIVIDED BY 3} + .300/7.62$

NOTES:

- PRODUCT NUMBERING CODE:
 $50749 - X \ YYY \ Z \ S$
 - X — SPECIAL FEATURES(NOTE 8)
 - YYY — TAIL LENGTH(NOTE 5)
 - Z — NO. OF POSITIONS(NOTE 2)
 - S — PLATING(NOTE 4)
 - — BASE NUMBER
- THIS PRODUCT IS CONFIGURED IN SIZES OF 30 THRU 150 COLUMNS IN INCREMENTS OF THREE. i.e.: 30,33,36,39.....147,150.
- HOUSING MATERIAL: GLASS AND MINERAL FILLED HIGH TEMP. THERMOPLASTIC. FLAME RETARDANT PER UL94V-0. COLOR: BLACK. CONTACT MATERIAL: BeCu
- PLATING CONTACT AREA OPTIONS:
 1 = 30u"/.76u GOLD
 3 = 50u"/1.27u GOLD
 5 = 30u"/.76u GXT
 ALL SOLDER TAILS TIN/LEAD
- TAIL LENGTH OPTIONS:
 E = .125±.010 / 3.18±.25
 F = .145±.010 / 3.68±.25
 H = .180±.010 / 4.57±.25
- MANUFACTURE NAME, PART NUMBER AND LOT CODE TO APPEAR ON THIS SURFACE PER BUS-12-108.
- FOR DOCUMENTATION MENU, SEE SPEC. BUS-01-057.
- SPECIAL FEATURES: (SEE SHEET 3)
 - = IF CODE IS OMITTED FROM PRODUCT NO.; CONNECTOR IS PROVIDED AS SHOWN, NO SPECIAL FEATURES ARE SELECTED. FOR P.C.B. ATTACHMENT IN A .120 [3.05] MOUNTING HOLE.
 "A" = IF SPECIFIED, PRE-INSTALLED CLAW FOR P.C.B. ATTACHMENT IN A Ø.100 MOUNTING HOLE. (AVAILABLE IN "E" TAIL LENGTH ONLY).
 "B" = IF SPECIFIED, PRE-INSTALLED CLAW FOR P.C.B. ATTACHMENT IN A Ø.120 MOUNTING HOLE.
 "C" = IF SPECIFIED, MOLDED GUIDE PINS w/CLAW FOR P.C.B. ATTACHMENT IN A Ø.120 MOUNTING HOLE.
- CLAW DIMENSION DETERMINED BY P.C.B. HOLE DIAMETER.



SECTION U-U NO SPECIAL FEATURE SECTION X-X NO SPECIAL FEATURE SECTION W-W NO SPECIAL FEATURE



RECOMMENDED PCB LAYOUT
(ALL HOLES LOCATED ON .100 [2.54] GRID UNLESS OTHERWISE SPECIFIED)

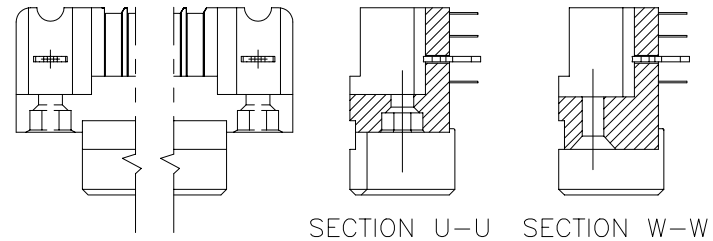
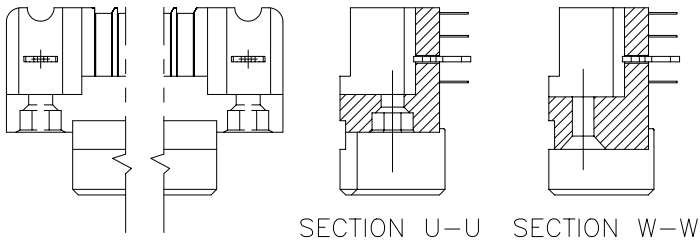
mat'l. code		surface		tolerance		projection		product family	
-		ISO 1302 ✓		ISO 406		ISO 1101		HPC	
ltr		ecn		no		dr		date	
E									
				tolerances unless otherwise specified		INCH/MM		title	
				angles		.xx ±.01/.3		4 ROW R/A RECEPTACLE	
				linear		.xxx ±.005/.13		SOLDER TAIL, 2 GUIDE PINS	
				0°±2'		.xxxx ±.0020/.051		scale 1:1	
				dr		G. PETERS 10/14/93		dwg no	
				enrg		S. CLARK 10/14/93		sheet 2 of 3 size	
				chr		S. CLARK 10/18/93		50749 A3	
				appd		S. CLARK 10/18/93		type Product Customer Drawing	
sheet index		revision sheet							

PRODUCT NUMBER

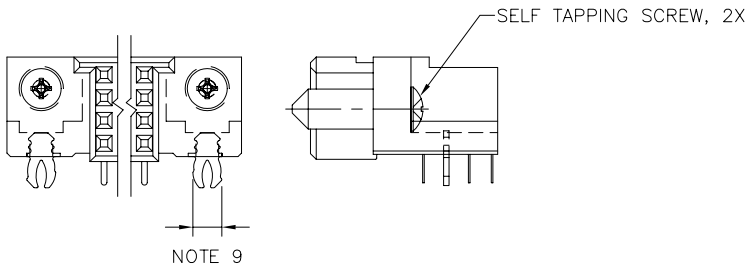
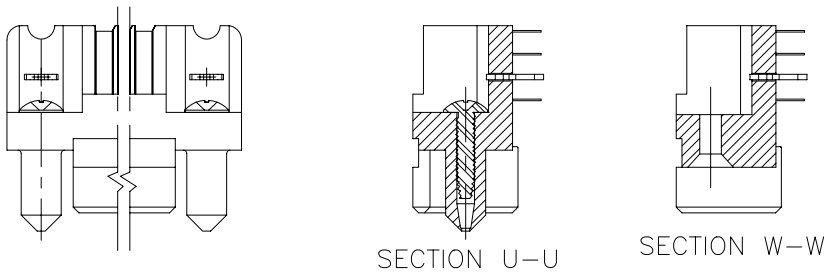
SEE NOTE 1

SPECIAL FEATURE OPTION A

SPECIAL FEATURE OPTION B



SPECIAL FEATURE OPTION C



mat'l. code		surface		tolerance		projection		product family	
-		ISO 1302 ✓		ISO 406 ISO 1101				HPC	
ltr		ecn no		dr		date		title	
E								4 ROW R/A RECEPTACLE SOLDER TAIL, 2 GUIDE PINS	
				tolerances unless otherwise specified				INCH/MM scale N.T.S.	
				angles		.xx ±.01/.3		dwg no	
				linear		.xxx ±.005/.13		50749	
				0°±2'		.xxxx ±.0020/.051		sheet 3 of 3 size	
				dr		G. PETERS 10/14/93		A3	
				enr		S. CLARK 10/14/93		type	
				chr		S. CLARK 10/18/93		Product Customer Drawing	
				appd		S. CLARK 10/18/93			
sheet		revision							
index		sheet							

FCJ
 FCJconnect.com
 Copyright FCJ