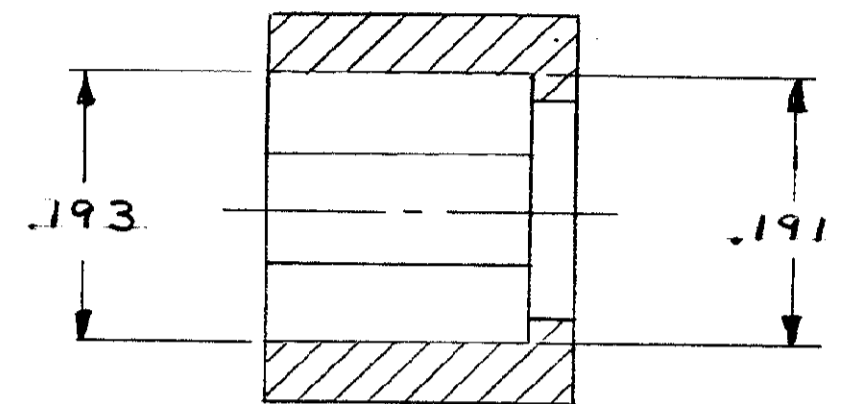
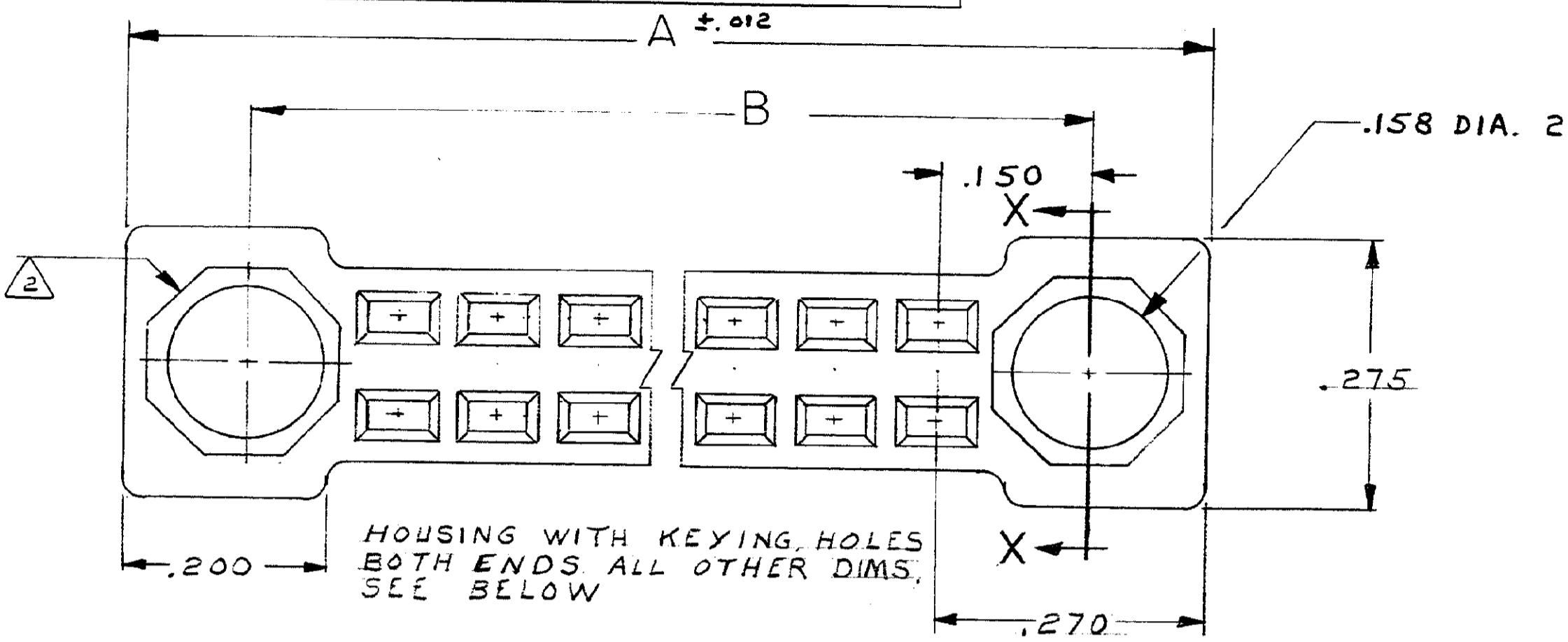


DRAWING MADE IN THIRD ANGLE PROJECTION

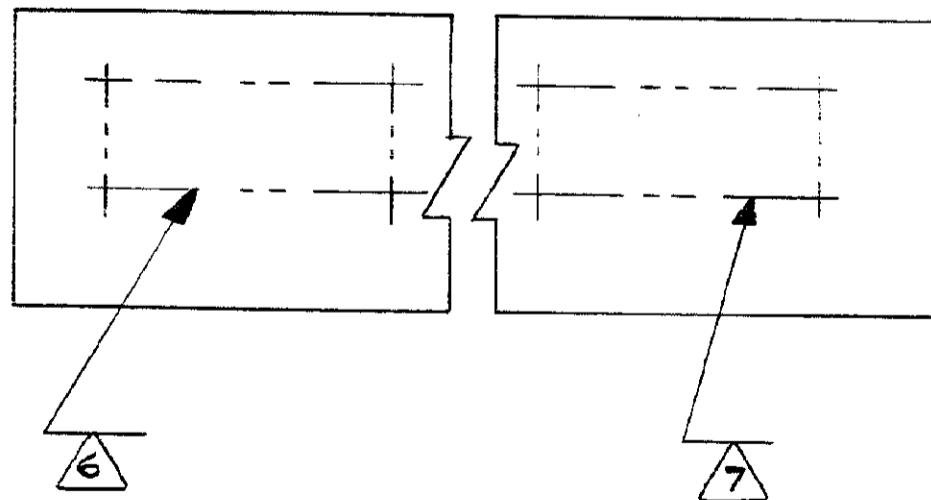
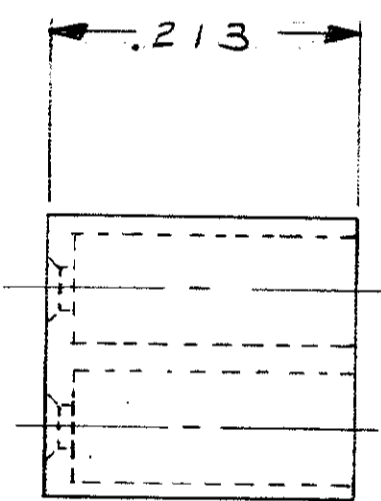
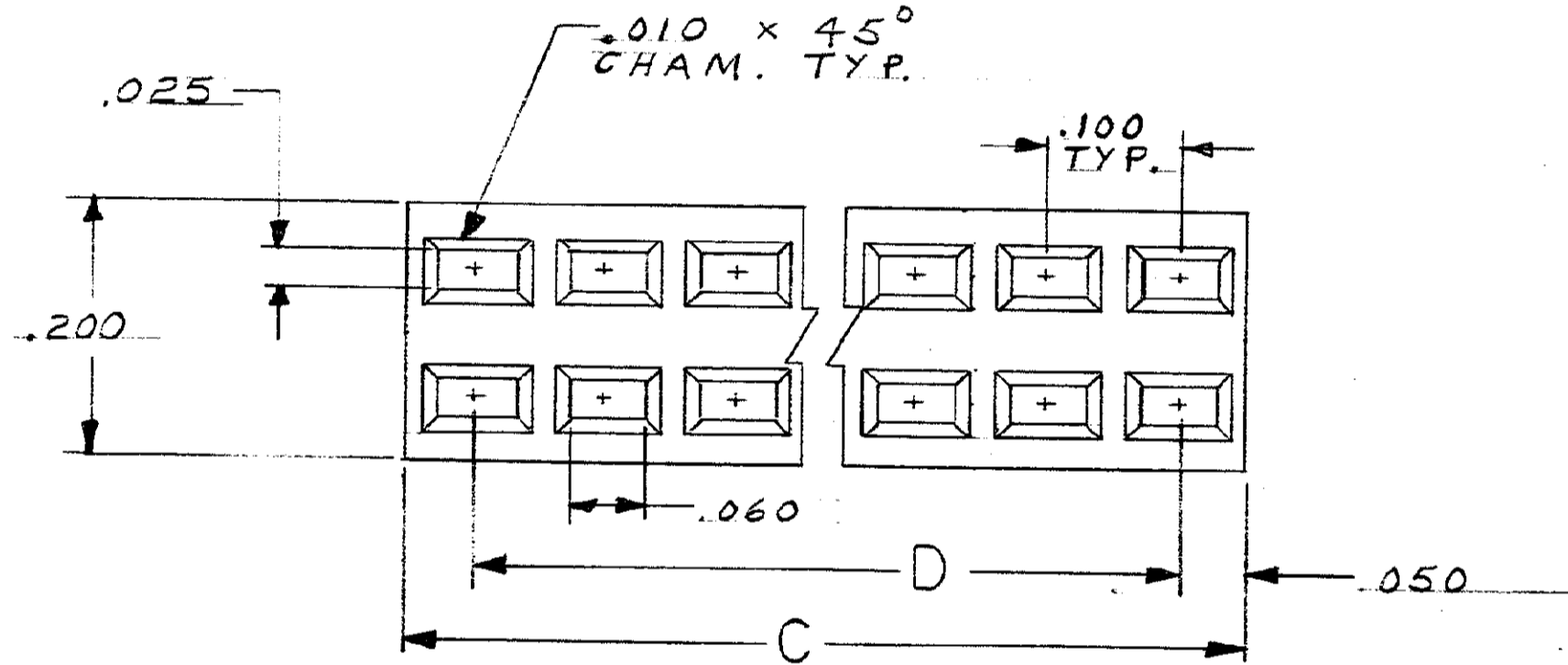
THIS DRAWING IS UNPUBLISHED. RELEASED FOR PUBLICATION 19  
 © COPYRIGHT 19 BY AMP INCORPORATED, HARRISBURG, PA. ALL INTERNATIONAL RIGHTS RESERVED. AMP PRODUCTS MAY BE COVERED BY U.S. AND FOREIGN PATENTS AND/OR PATENTS PENDING.

LOC DIST  
 AB 39

REVISIONS						
P	F	ZONE	LTR	DESCRIPTION	DATE	APPROVED
✓				RELEASED	m.s.	10-85



SECTION X-X



UNLESS OTHERWISE SPECIFIED DIMENSIONS ARE IN INCHES. TOLERANCES ON: DECIMALS ±.005 ANGLES =		CONTRACT NO 10-30-85		PART NO	
MATERIAL ⚠		DR <i>M. Smith</i>		AMP   AMP INCORPORATED Harrisburg, Pa. 17105	
FINISH		CHK <i>A. Skopje</i>		NAME ECONOMATE II, HOUSING, RECEPTACLE, .100 x .100 CTRS.	
		APPD <i>A. Skopje</i>		SIZE C	
		APPD <i>E. Parsons</i>		FSCM NO 00779	
		DSGN APPD		DRAWING NO 533310	
		OTHER APPD		SCALE 8:1	
				SHEET 1 OF 2	

533310

THIS DRAWING IS UNPUBLISHED. RELEASED FOR PUBLICATION, 19  
 © COPYRIGHT 19 BY AMP INCORPORATED, HARRISBURG, PA. ALL INTERNATIONAL RIGHTS RESERVED. AMP PRODUCTS MAY BE COVERED BY U.S. AND FOREIGN PATENTS AND/OR PATENTS PENDING.

REVISIONS					
P/F	ZONE	LTR	DESCRIPTION	DATE	APPROVED
			SEE SHEET. 1		

1. REFER TO DRAWING 112178 FOR TYPICAL APPLICATION WITH CONTACTS.
2. KEYING HOLES ARE DESIGNED TO ACCEPT KEY BUSHINGS MEETING THE REQUIREMENTS OF MIL-C-28754/39A, AMP PART NO. SERIES 117142.
3. THE PRINTED CIRCUIT BOARD UPON WHICH THIS RECEPTACLE IS MOUNTED MUST HAVE A CLEARANCE HOLE OF .158 DIA. WHEN THE MATING HEADER (REF. 117096) HAS KEY PINS MEETING THE REQUIREMENTS OF MIL-C-28754/24 A.
4. GLASS FILLED THERMOPLASTIC POLYESTER, COLOR: BLACK.
5. KEYING HOLE WILL BE TO THE LEFT ON SINGLE KEYING HOLE HOUSINGS WHEN MARKED WITH PART NO. AND DATE CODE.
6. AMP TRADEMARK, PART NUMBER AND DATE CODE (YR.-WK) .062 HIGH CHARS. CENTRALLY LOCATED AS SHOWN.
7. CUSTOMER PART NO. INK STAMPED THIS AREA .062 MIN. HIGH CHARS. IF SIZE PERMITS, OTHERWISE STAMPED ON OPPOSITE SIDE.

533310

	C5001042-3	#	3.900	4.200	4.440	40	533310-3	
	C5001042-2	2.000	1.900	#	#	20	533310-2	
	C5001042-1	#	4.900	5.200	5.440	50	533310-1	
	CUSTOMER PART NO.		D	C	B	A	NO. POS.	PART NO.
UNLESS OTHERWISE SPECIFIED DIMENSIONS ARE IN INCHES. TOLERANCES ON: DECIMALS ±.005 ANGLES ±	CONTRACT NO		AMP INCORPORATED Harrisburg, Pa. 17105					
	DR <i>M. Smith</i> 10-30-85		NAME <b>ECONOMATE II, HOUSING, RECEPTACLE, 100 X 100 CTRS.</b>					
MATERIAL	CHK <i>A. Shopic</i> 11-1-85		DRAWING NO					
	APPD <i>A. Shopic</i> 11-1-85		C 00779 533310					
FINISH	APPD <i>E. Larson</i> 11-4-85		SCALE					
	DSGN APPD		SHEET 2					
OTHER APPD								