

4

3

2

1


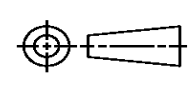
THIS DRAWING IS UNPUBLISHED. RELEASED FOR PUBLICATION
© COPYRIGHT ALL RIGHTS RESERVED.

LOC	DIST	REVISIONS			
P	LTR	DESCRIPTION	DATE	DWN	APVD
	A1	ECR-14-002920	27FEB2014	GK	HMR

REPLACED BY OCEAN STYLE APPLICATOR PART NUMBER 2151102-1

FOR REPLACEMENT PARTS FOR APPLICATOR 1528744
REFER TO ADDITIONAL PAGE(S). SPARE PARTS KIT (IF LISTED)
WILL REMAIN AVAILABLE.

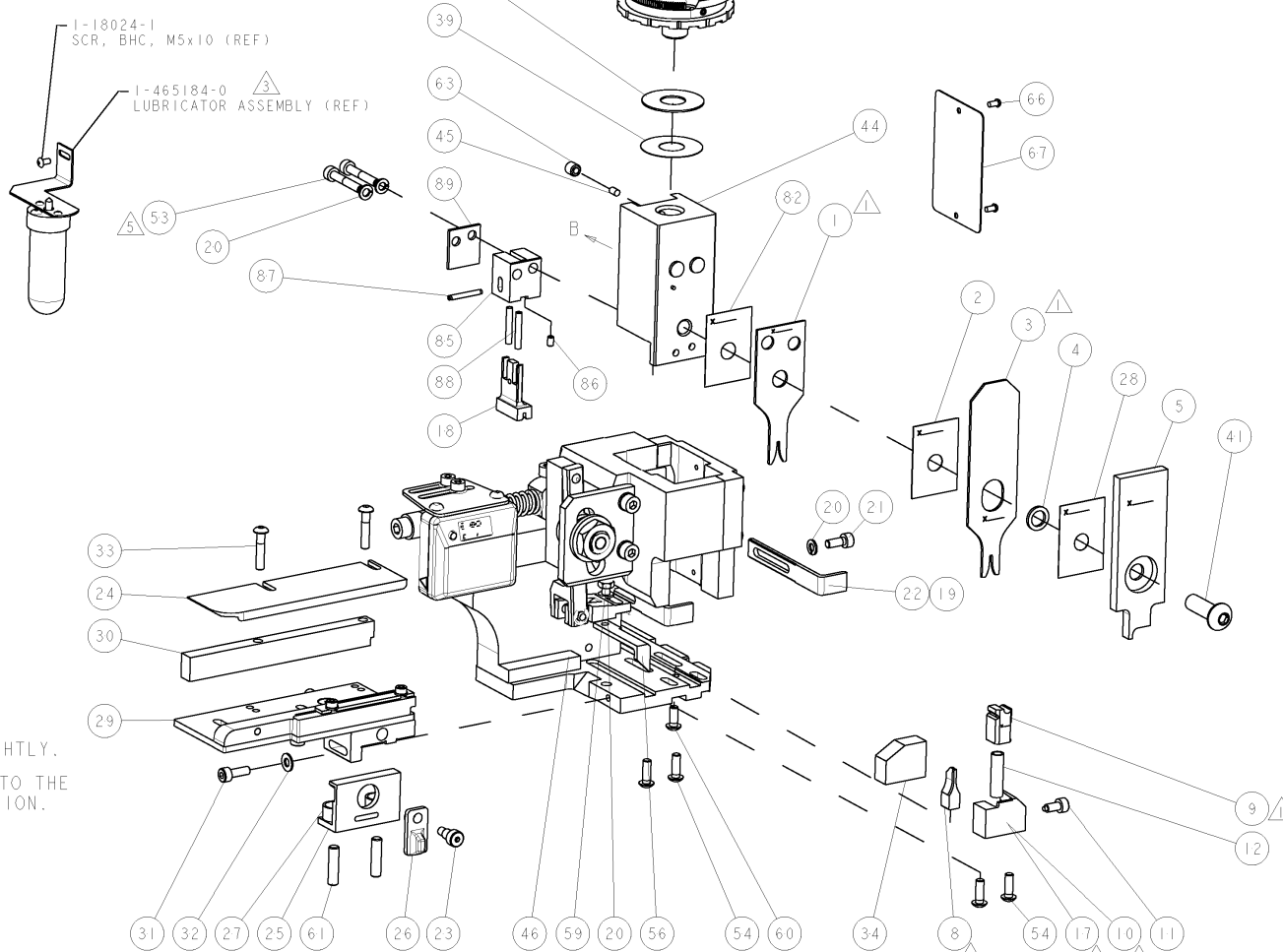
THE REPLACEMENT OCEAN STYLE APPLICATOR HAS THE
SAME TERMINATOR/PRESS INTERFACE AS APPLICATOR
1528744

THIS DRAWING IS A CONTROLLED DOCUMENT.		DWN	GOPALAKRISHNA HV														
DIMENSIONS:		CHK	RAGHAVENDRA														
TOLERANCES UNLESS OTHERWISE SPECIFIED:		APVD	RAGHAVENDRA														
<table border="0"> <tr><td>0 PLC</td><td>±</td></tr> <tr><td>1 PLC</td><td>±</td></tr> <tr><td>2 PLC</td><td>±</td></tr> <tr><td>3 PLC</td><td>±</td></tr> <tr><td>4 PLC</td><td>±</td></tr> <tr><td>ANGLES</td><td>±</td></tr> </table>		0 PLC	±	1 PLC	±	2 PLC	±	3 PLC	±	4 PLC	±	ANGLES	±	PRODUCT SPEC	 TE Connectivity NAME FINE ADJUST SIDE FEED HDI APPLICATOR		
0 PLC	±																
1 PLC	±																
2 PLC	±																
3 PLC	±																
4 PLC	±																
ANGLES	±																
		APPLICATION SPEC															
MATERIAL	FINISH	WEIGHT	SIZE	CAGE CODE	DRAWING NO	RESTRICTED TO											
			A3		©- 1528744												
CUSTOMER DRAWING			SCALE	SHEET 1 OF 2	REV A1												

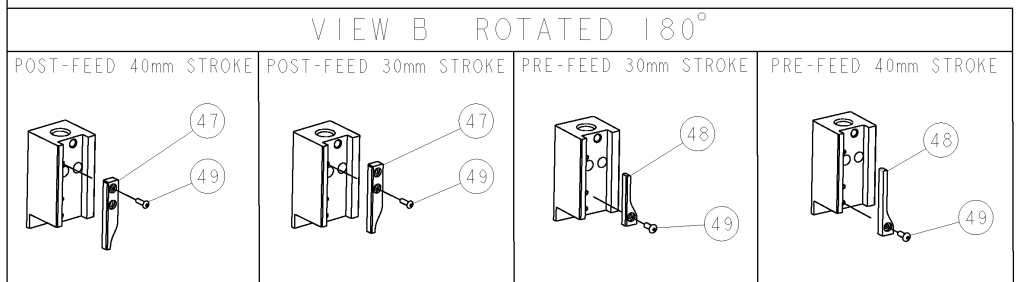
PART NUMBER	REV	TERMINATOR	FEED TYPE	DESCRIPTION
1528744-1	A	LEADMAKER	MECH POST FEED	CUTS CARRIER
1528744-2	A	BENCH	MECH PRE FEED	CUTS CARRIER
1528744-6	A	LEADMAKER	MECH POST FEED	CONTINUOUS CARRIER
7-1528744-1	A	LEADMAKER	MECH POST FEED	-1 AND SPARE PARTS
7-1528744-2	A	BENCH	MECH PRE FEED	-2 AND SPARE PARTS
7-1528744-6	A	LEADMAKER	MECH POST FEED	-6 AND SPARE PARTS
7-1528744-7	A	-	-	SPARE PARTS KIT

CRIMP DATA		TYCO TERMINAL		TYCO CRIMP SPECS	
TERMINAL NAME: AMP CT CONN 2mm PITCH TYPE II REC. CONTACT					
CRIMP	SIZE	TYPE	RANGE		
WIRE	1.17 [0.46 IN]	F	0.12-0.37mm ² or 26-22 AWG		
INSUL	1.50 [0.59 IN]	F	0.93-1.50 [0.37-.059 IN]		
WIRE STRIP LENGTH 1.90-2.30 [0.75-.090 IN]		APPL INSTRUCTIONS 408-8322 & 408-8490			
TERMINAL APPL SPEC 114-5179		FEED 7.50 [2.95 IN]			
TERMINALS APPLIED					
179227					
WIRE SIZE					
22 AWG or 0.37mm ²	0.83 ± 0.05 [0.033 ± 0.002 IN]	C 8			
0.30mm ²	0.83 ± 0.05 [0.033 ± 0.002 IN]	C 8			
24 AWG or 0.22mm ²	0.77 ± 0.05 [0.030 ± 0.002 IN]	D 2			
26 AWG or 0.12mm ²	0.71 ± 0.05 [0.028 ± 0.002 IN]	D 5			

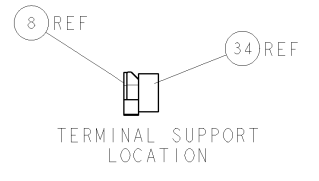
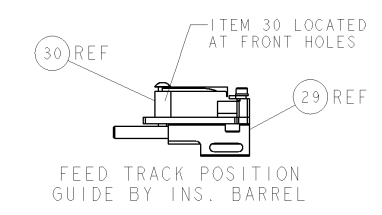
- △ RECOMMENDED SPARE PARTS.
- 2. GREASE RAM, CAM, CAM FOLLOWER AND FEED ROD LIGHTLY.
- △ CERTAIN TERMINALS REQUIRE LUBRICATION. REFER TO THE APPLICATOR INSTRUCTION SHEET FOR MORE INFORMATION.
- 4. LUBRICATE DAILY PER THE APPLICATOR INSTRUCTION SHEET SUPPLIED WITH THE APPLICATOR.
- △ CUT TO LENGTH AT ASSEMBLY.



* WARNING
ON INSTALLATION, SET WIRE DISC TO LARGEST WIRE SIZE SETTING. USE OF SETTINGS BELOW MIN. REQUIRED CRIMP HEIGHT SETTING WILL CAUSE DAMAGE TO CRIMP TOOLING.



PART NO	DESCRIPTION	ITEM NO
455053-1	PLATE, RETAINING	89
1-22278-9	SPRING, COMPRESSION	88
4-21028-0	PIN, SLOTTED SPRING .094 X .750	87
18031-1	SCR, SET, CUP POINT M3 X 5.0	86
455052-2	CARRIER, HOLD DOWN	85
455888-1	SPACER, CRIMPER	82
-	-	81
-	-	80
-	-	79
-	-	78
-	-	77
-	-	76
-	-	75
-	-	74
-77 -76 -72 -71 -6 -2 -1	PART NO	DESCRIPTION



SET UP GAGE
458637-3

REV	DATE	BY	CHK	APPV	DESCRIPTION
A	01JAN2007	LJL	MC		SEE ECO-07-000619

REV	DATE	BY	CHK	APPV	DESCRIPTION	ITEM NO		
-	-	-	-	-	-	73		
-	-	-	-	-	-	72		
-	1	1	1	1	1	1338705-3	DOCUMENTATION PACKAGE	71
-	-	-	-	-	-	-	-	70
-	-	-	-	-	-	-	-	69
-	-	-	-	-	-	-	-	68
-	1	1	1	1	1	461264-5	PLATE, IDENTIFICATION	67
-	2	2	2	2	2	21017-2	SCREW, DRIVE	66
-	-	-	-	-	-	-	-	65
-	-	-	-	-	-	-	-	64
-	1	1	1	1	1	3-18031-0	SCR, SET, CUP POINT M6 X 6.0	63
-	-	-	-	-	-	-	-	62
-	2	2	2	2	2	2-18032-5	SCR, SET, FLT POINT M5 X 20.0	61
-	1	1	1	1	1	18024-7	SCR, BTN SKT HD CAP (M4 X 10.0)	60
-	1	1	1	1	1	5-18022-2	SCR, HEX HD CAP M4 X 8.0	59
-	-	-	-	-	-	-	-	58
-	-	-	-	-	-	-	-	57
-	1	1	1	1	1	1338685-1	PAWL, FEED	56
-	-	-	-	-	-	-	-	55
-	4	4	4	4	4	18024-8	SCR, BTN SKT HD CAP (M4 X 12.0)	54
-	2	2	2	2	2	1-18023-5	SCR, SKT HD CAP M4 X 25.0	53
-	-	-	-	-	-	-	-	52
-	-	-	-	-	-	-	-	51
-	-	-	-	-	-	-	-	50
-	1	1	1	1	1	18024-3	SCR, BTN SKT HD CAP (M3 X 10.0)	49
-	-	-	-	-	-	-	-	48
-	-	-	-	-	-	1338675-1	CAM, UNIVERSAL PRE FEED	48
-	-	-	-	-	-	1338676-1	CAM, UNIVERSAL POST-FEED	47
-	1	1	1	1	1	1320999-3	APPLICATOR SUBASSEMBLY, HDI	46
-	1	1	1	1	1	690191-1	PLUG, NYLON	45
-	1	1	1	1	1	1338660-3	RAM	44
-	-	-	-	-	-	-	-	43
-	-	-	-	-	-	-	-	42
-	1	1	1	1	1	2-18024-6	SCR, BTN SKT HD CAP (M8 X 25.0)	41
-	-	-	-	-	-	-	-	40
-	1	1	1	1	1	690125-1	SHIM SUB-ASSY	39
-	1	1	1	1	1	469367-8	SHIM	38
-	1	1	1	1	1	879103-3	FINE ADJUST HEAD ASSEMBLY	37
-	-	-	-	-	-	-	-	36
-	-	-	-	-	-	-	-	35
-	1	1	1	1	1	1-1320934-6	SUPPORT, TERMINAL	34
-	2	2	2	2	2	1-18024-0	SCR, BTN SKT HD CAP (M4 X 20.0)	33
-	1	1	1	1	1	18027-2	WASHER, FLAT, REG M4	32
-	1	1	1	1	1	1-18023-2	SCR, SKT HD CAP M4 X 12.0	31
-	1	1	1	1	1	1320908-1	SPACER, STRIP GUIDE	30
-	1	1	1	1	1	1633073-1	STRIP GUIDE ASSEMBLY	29
-	1	1	1	1	1	455888-1	SPACER, CRIMPER	28
-	2	2	2	2	2	1-22284-0	SPRING, COMPRESSION	27
-	1	1	1	1	1	356835-1	LEVER, DRAG RELEASE	26
-	1	1	1	1	1	240792-1	DRAG, TERMINAL	25
-	1	1	1	1	1	1320928-1	PLATE, STRIP GUIDE	24
-	1	1	1	1	1	980371-4	SCR, SKT HD SHLDR 5.0 DIA X 6.0	23
-	1	-	1	-	1	690472-9	STRIPPER	22
-	1	1	1	1	1	1-18023-1	SCR, SKT HD CAP M4 X 10.0	21
-	4	4	4	4	4	18025-2	WASHER, SPRG LOCK, REG M4	20
-	-	-	-	-	-	690472-9	STRIPPER	19
-	1	1	1	1	1	2-1338389-1	HOLD DOWN, TERMINAL	18
-	1	-	-	-	-	1338684-1	SHEAR HOLDER, FRONT	17
-	-	-	-	-	-	-	-	16
-	-	-	-	-	-	-	-	15
-	-	-	-	-	-	-	-	14
-	-	-	-	-	-	-	-	13
-	1	1	1	1	1	3-22280-3	SPRING, COMPRESSION	12
-	1	1	1	1	1	356885-4	STOP, SHEAR	11
-	-	1	-	-	-	1320921-1	SHEAR HOLDER, FRONT, CUT	10
-	1	1	1	1	1	462006-1	FLOATING SHEAR, FRONT	9
-	1	2	2	2	2	1-1333225-6	ANVIL, COMBINATION	8
-	-	-	-	-	-	-	-	7
-	-	-	-	-	-	-	-	6
-	1	1	1	1	1	1-455889-4	DEPRESSOR, SHEAR	5
-	1	1	1	1	1	2-238011-0	BLOCK, CRIMPER SPACER	4
-	1	2	2	2	2	5-1213077-2	CRIMPER, INSULATION PREMIUM	3
-	1	1	1	1	1	455888-3	SPACER, CRIMPER	2
-	1	2	2	2	2	1-568176-7	CRIMPER, WIRE	1

DIMENSIONS: mm (IN)		TOLERANCES UNLESS OTHERWISE SPECIFIED:		DIMENSIONS: mm (IN) 0 PLC ± 1 PLC ± 2 PLC ± 3 PLC ± 4 PLC ± ANGLES ±		DIMENSIONS: mm (IN) 0 PLC ± 1 PLC ± 2 PLC ± 3 PLC ± 4 PLC ± ANGLES ±		DIMENSIONS: mm (IN) 0 PLC ± 1 PLC ± 2 PLC ± 3 PLC ± 4 PLC ± ANGLES ±	
MATERIAL:		FINISH:		DIMENSIONS: mm (IN) 0 PLC ± 1 PLC ± 2 PLC ± 3 PLC ± 4 PLC ± ANGLES ±		DIMENSIONS: mm (IN) 0 PLC ± 1 PLC ± 2 PLC ± 3 PLC ± 4 PLC ± ANGLES ±		DIMENSIONS: mm (IN) 0 PLC ± 1 PLC ± 2 PLC ± 3 PLC ± 4 PLC ± ANGLES ±	