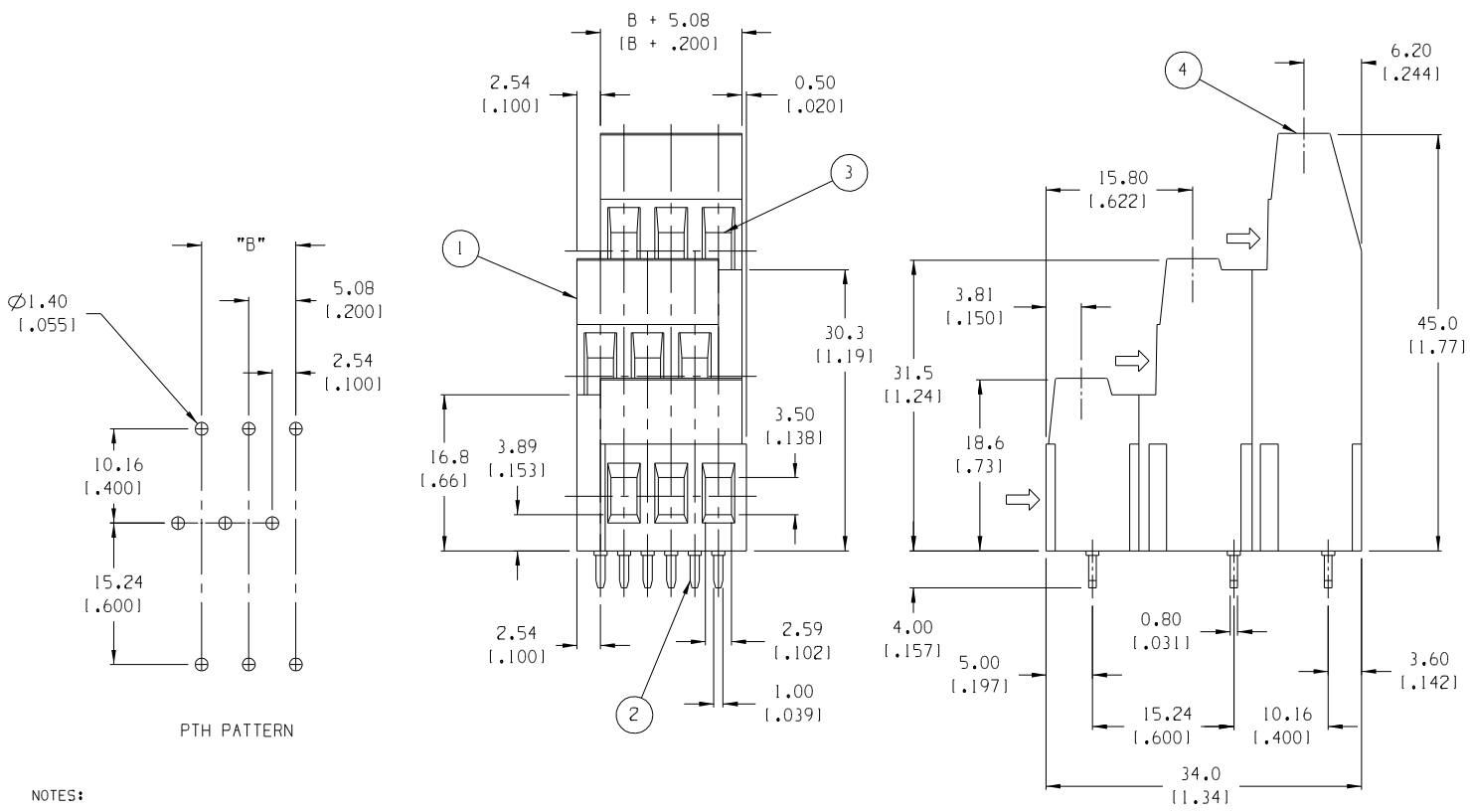


AUX. VIEW
SCALE 1:1
9 CIRCUIT SHOWN



NO. OF CIRCUITS "XX"	DIM. "B"	MATERIAL NO.
06	5.08 [1.200]	39880-1006
09	10.16 [1.400]	39880-1009
12	15.24 [1.600]	39880-1012
15	20.32 [1.800]	39880-1015
18	25.40 [1.000]	39880-1018
21	30.48 [1.200]	39880-1021
24	35.56 [1.400]	39880-1024
27	40.64 [1.600]	39880-1027
30	45.72 [1.800]	39880-1030
33	50.80 [2.000]	39880-1033
36	55.88 [2.200]	39880-1036
39	60.96 [2.400]	39880-1039
42	66.04 [2.600]	39880-1042
45	71.12 [2.800]	39880-1045
48	76.20 [3.000]	39880-1048
51	81.28 [3.200]	39880-1051
54	86.36 [3.400]	39880-1054
57	91.44 [3.600]	39880-1057
60	96.52 [3.800]	39880-1060
63	101.60 [4.000]	39880-1063
66	106.68 [4.200]	39880-1066
69	111.76 [4.400]	39880-1069
72	116.84 [4.600]	39880-1072

- NOTES:
1. MATERIAL: SEE TABLE
 2. FINISHES: SEE TABLE
 3. PRODUCT SPECIFICATION: NOT REQUIRED
 4. PACKAGING: NOT REQUIRED
 5. MATES WITH: NONE
 6. "XX" REFERS TO THE QUANTITY OF CIRCUITS.

ITEM	QTY.	DESCRIPTION	MATERIAL	FINISH
4	XX	SCREW, M3	BRONZE	NICKEL PLATE
3	XX	RISEING CAGE CLAMP	BRASS	NICKEL PLATE
2	XX	TERMINAL	COPPER ALLOY	TIN PLATE
1	1	INSULATOR, THREE LEVEL	POLYAMIDE	BLACK

EC NO. RELEASED DRAWN: CLY CHK: CLY APPR: CLY	DESCRIPTION MAJOR CRITICAL SPC	QUALITY SYMBOLS	GENERAL TOLERANCES: (UNLESS SPECIFIED)	SCALE 2:1	DESIGN UNITS <input type="checkbox"/> mm <input checked="" type="checkbox"/> INCH	THIRD ANGLE PROJECTION	DRAWN BY & DATE C. YORK 12-02-04	TITLE: 5.08mm [1.200"] HIGH PROFILE, THREE LEVEL TERM. BLOCK
		4 PLACES ±.0015 INCH ±.005 3 PLACES ±.038 INCH ±.005 2 PLACES ±.13 INCH ±.01 1 PLACE ±.3	APPROVED BY & DATE	CAD FILENAME 8834XX	MATERIAL NO. SEE CHART	DRAWING NO. SD-39880-007	SHEET NO. 1 OF 1	
		ANGULAR: ±2°	DRAFT WHERE APPLICABLE MUST REMAIN WITHIN DIMENSIONS			THIS DRAWING CONTAINS INFORMATION THAT IS PROPRIETARY TO MOLEX INCORPORATED AND SHOULD NOT BE USED WITHOUT WRITTEN PERMISSION.		
		REV	PROJECT NO. - - - DIMENSIONS: <input checked="" type="checkbox"/> mm <input type="checkbox"/> INCH <input type="checkbox"/> mm ONLY SHT REV INCH mm ONLY CAD ONLY					