

SIGN	DATE	DESCRIPTION	APPROVER

THIS IS CAD DRAWING, DO NOT REVISE MANUALLY!!!



Ratings

Rated Voltage	300 V
Rated Current	8 A
Rated Wire Size	
solid	AWG 28-16
flexible	AWG 28-16

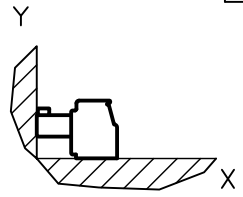
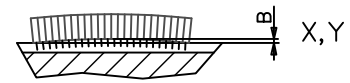
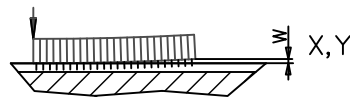
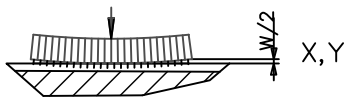
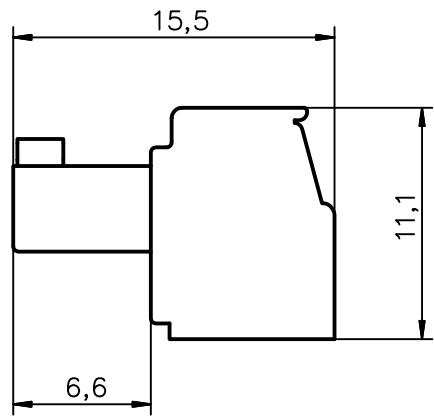
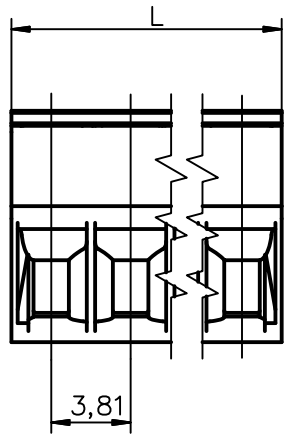
Screw Size M2

Insulating Material

Material	PA 6.6
Flammability Class	UL 94 V-0

Materials

Clamp	Brass
Screw	Steel
Contact Spring	Bronze
Temperature Range	-30 °C / +105 °C



Part number	L	Tolerance standard climate	Tolerance different from standard climate	W,B Standard climate
EDZ1550/2	7.62	± 0.15	± 0.3	< 0.1

THESE DRAWINGS AND SPECIFICATIONS ARE THE PROPERTY OF ON-SHORE TECHNOLOGY, INC. AND SHALL NOT BE REPRODUCED, COPIED OR USED IN ANY MANNER WITHOUT THE PRIOR WRITTEN CONSENT OF ON-SHORE TECHNOLOGY, INC.



TITLE		EDZ1550 3.81mm Series			
PART NO.	EDZ1550/2	DWG NO.	EDZ1550-2.DWG		
APPROVED	CHECKED	DESIGNED	DRAWN	CUST NO.	General tolerance
Vogel 2014.03.06	Vogel 2014.03.06	Vogel 2014.03.06	Vogel 2014.03.06		X. ± 0.5
SHEET: 01/01					UNIT: mm
				SCALE: NONE	X.XX ± 0.1
				REV.: A	X' ± 1'