

REVISION

E	CC	B RAY
1/31/2012	ECN-170956	
DEL NOTE 13. CHG NOTE 12 FROM "PARTS TO BE PACKAGED IN TAPE & REEL" TO "PARTS TO BE PACKAGED IN TAPE & REEL. FOR QTY'S LESS THAN 125 PCS, NO TRAILER OR LEADER WILL BE SUPPLIED."		
DESCRIPTION: CHG ".050 MULTI ROW SOCKET ASSEMBLY" TO "VITA 42 (LEAD FREE) SOCKET ASSEMBLY. TOP VIEW DIM. 9.000 ADD (19 POS .0500[1.270]). BOM CHG MATERIAL ITEM 1 FROM "VECTRA E130I" TO "UL 94 V0". ADD NOTE TO TOP RIGHT. SHT 2: (6 ROWS-1.) IS AN OVERRIDE VALUE. MOVE 19 TO TOP LEFT AND 01 TO TOP RIGHT. ADD DIMDET 'A' ALL DIM SHOULD HAVE 3 DECIMALS. STENCIL LAYOUT: MOVE 19 POS TO TOP LEFT AND 01 TO TOP RIGHT, ADD A,B,C,D,E,F.		

F	JB	T WILD
6/9/2014	ECN-229656	
BOM CHG ITEM 4 K-850-850 TO K-DOT-354-469-005		

G	JB	Z Barnett
10/8/2015	ECN-260318	
TITLE BLOCK. DESCRIPTION: CHG "... (LEAD FREE) ..." TO "... (LEADED) ..."		

H	TV	T WILD
9/2/2016	ECN-283776	
NOTES: NOTE 4 DEL ITS		

BY SIGNING THIS DOCUMENT YOU ARE ACCEPTING THE CONDITIONS SET WITHIN. YOUR REQUIREMENTS MUST BE LISTED WITHIN THIS DRAWING. WHERE NO DIRECTION FROM THE CUSTOMER IS IDENTIFIED SAMTEC'S PROCESS REQUIREMENTS WILL BE USED.

DATE: _____
 COMPANY: _____
 CUSTOMER SIGNATURE: _____
 PRINTED NAME: _____
 PHONE NO: _____
 EXCEPTIONS: _____

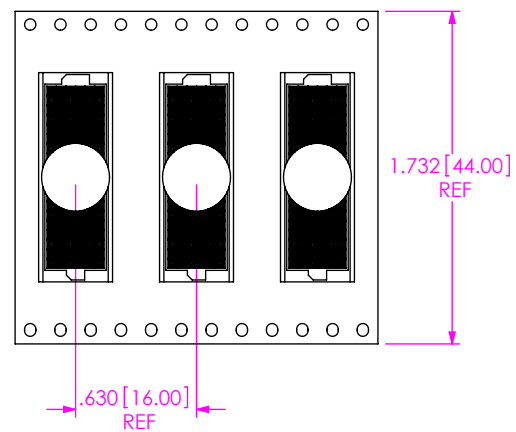
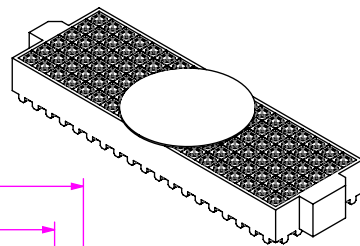
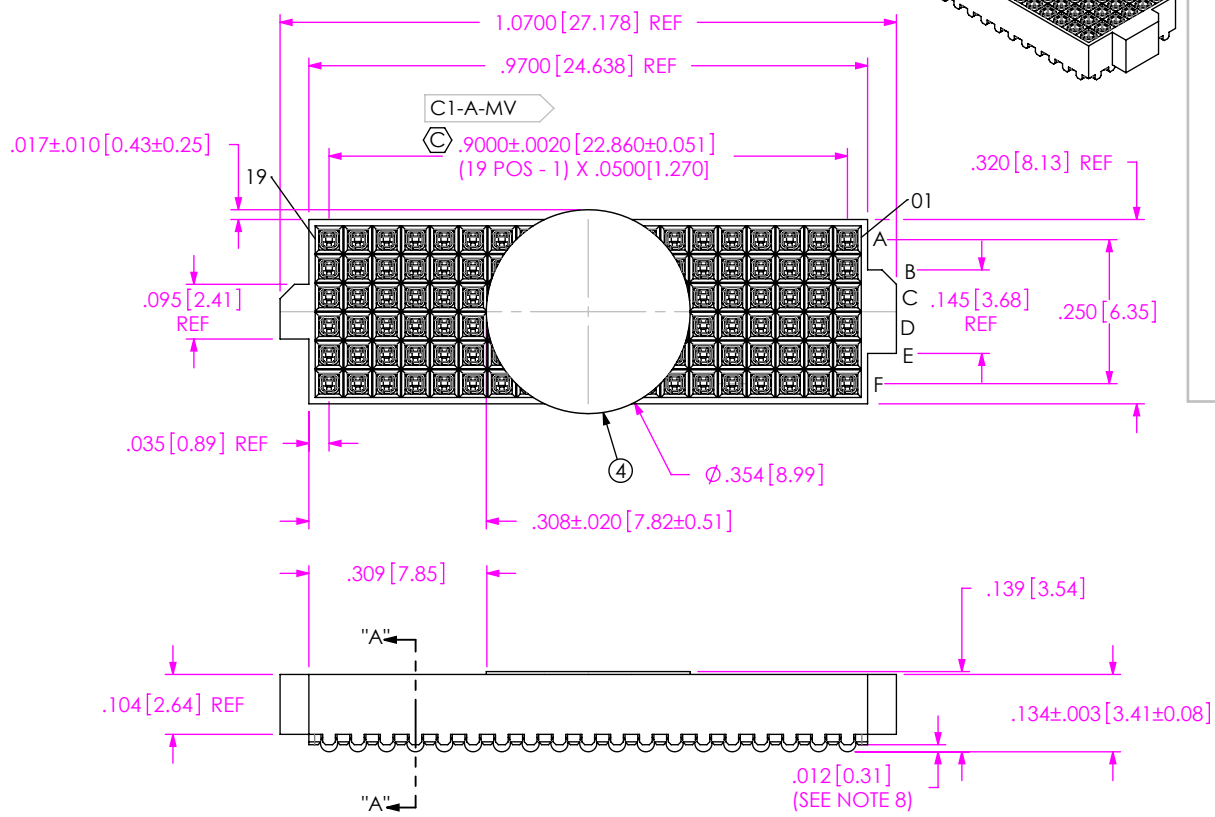
NOTES:

1. ASP-103597-01-B BODY FOR NON-STANDARD 19 POSITION.
2. Ⓢ REPRESENTS A CRITICAL DIMENSION.
3. MAXIMUM BURR ALLOWANCE: .0005[0.013]
4. MINIMUM PUSHOUT FORCE: .5 LB
5. CONTACT TO BE FLUSH TO ±.002[0.05] RECESSED.
6. ONE REEL MINIMUM PLATING REQUIREMENT (85,000 CONTACTS PER REEL).
7. ALL DIMS TO BE SYMMETRICAL ABOUT THE CENTERLINE WITHIN ±.001[0.03].
8. MAXIMUM VARIATION BETWEEN SOLDERBALLS: .0025[0.064]
9. REFER TO VISUAL INSPECTION BOARD FOR SOLDERBALL APPEARANCE CHECKS.
10. THE DISTANCE FROM THE CENTER OF ANY SOLDERBALL TO THE CENTER OF ANY ADJACENT INNER PEG SHALL BE .025±.005[0.64±0.13].
11. SOLDER JOINTS TO BE INSPECTED PER IPC SPECIFICATION 12.2.12 (IPC-A-610C).
12. PARTS TO BE PACKAGED IN TAPE & REEL. FOR QTY'S LESS THAN 125 PCS, NO TRAILER OR LEADER WILL BE SUPPLIED.
13. NOTE DELETED.

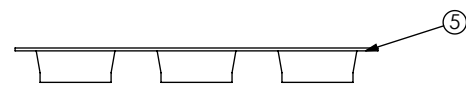
ANY REV MADE TO THIS PRINT MUST HAVE AN UPDATED MKT PRINT

C2-B-MV

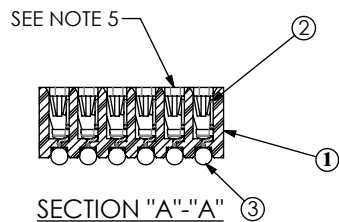
H



USER DIRECTION OF UN-REELING →
 POCKET NOT DETAILED



PACKAGING VIEW



SECTION "A"- "A" ③

ITEM NO.	PART NUMBER	QUANTITY	MATERIAL
1	ASP-103597-01-B	1.0000	UL 94 V0, COLOR: BLACK
2	C-226-03-H	114.00	PHOS BRONZE, 521 HARD TEMPER
3	SDB-030-6337	114.00	63% TIN /37% LEAD
4	K-DOT-.354-.469-.005	1.0000	POLYIMIDE FILM
5	CT-ASP1132MS	.00148	CONDUCTIVE POLYMER

UNLESS OTHERWISE SPECIFIED, DIMENSIONS ARE IN INCHES.
 TOLERANCES ARE:
 DECIMALS ANGLES
 .XX: ±.01 2°
 .XXX: ±.005
 .XXXX: ±.0020

PROPRIETARY NOTE
 THIS DOCUMENT CONTAINS INFORMATION CONFIDENTIAL AND PROPRIETARY TO SAMTEC, INC. AND SHALL NOT BE REPRODUCED OR TRANSFERRED TO OTHER DOCUMENTS OR DISCLOSED TO OTHERS OR USED FOR ANY PURPOSE OTHER THAN THAT WHICH IT WAS OBTAINED WITHOUT THE EXPRESSED WRITTEN CONSENT OF SAMTEC, INC.

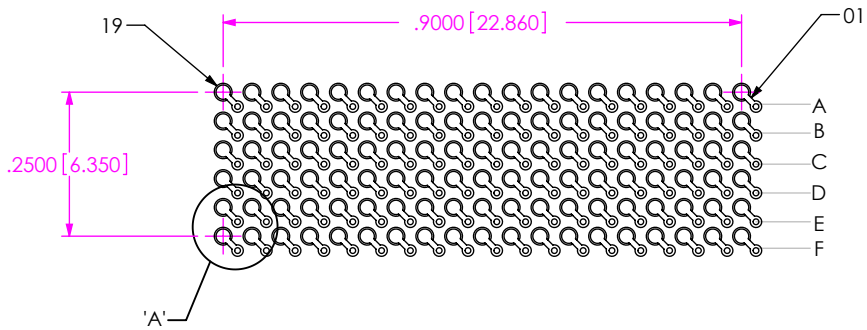


520 PARK EAST BLVD, NEW ALBANY, IN 47150
 PHONE: 812-944-6733 FAX: 812-948-5047
 e-Mail: info@SAMTEC.com code 55322

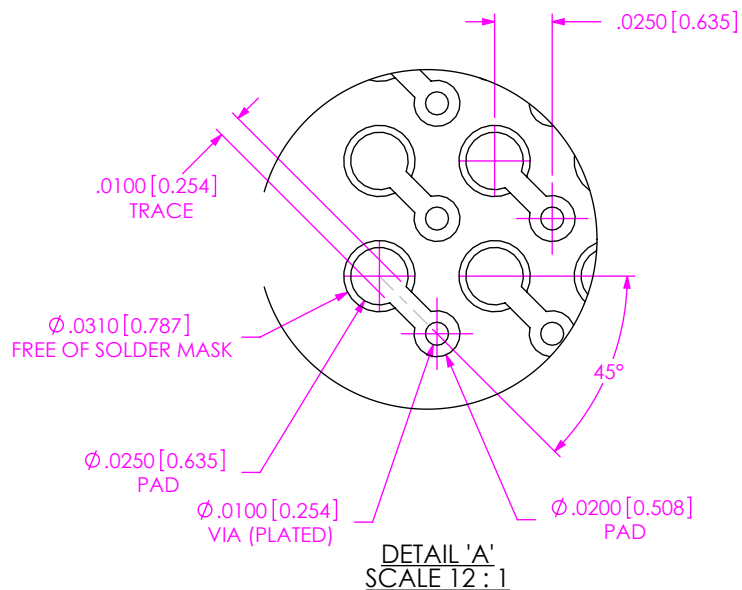
DO NOT SCALE DRAWING SHEET SCALE: 3:1
 PLATING:
 CONTACT AREA: .000030 GOLD OVER .000050 NICKEL
 REMAINDER: .000003 FLASH GOLD OVER .000050 NICKEL

DESCRIPTION:
 VITA 42 (LEADED) SOCKET ASSEMBLY
 DWG. NO.
ASP-103612-05
 BY: B. COOPER 12/08/06 SHEET 1 OF 2

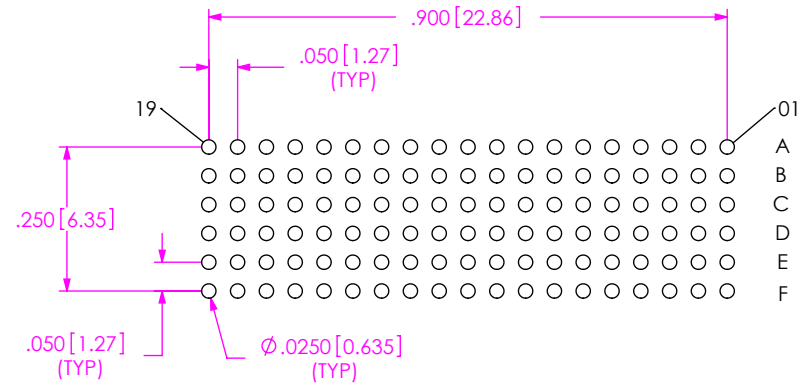
RECOMMENDED BOARD LAYOUT



NOTE:
OUTER ROWS MAY NOT NEED VIAS - THIS IS LEFT TO
THE DISCRETION OF THE BOARD DESIGNER.



RECOMMENDED STENCIL LAYOUT
STENCIL TO BE .0060 [0.152] THICK



PROPRIETARY NOTE

THIS DOCUMENT CONTAINS INFORMATION
CONFIDENTIAL AND PROPRIETARY TO
SAMTEC, INC. AND SHALL NOT BE REPRODUCED
OR TRANSFERRED TO OTHER DOCUMENTS OR
DISCLOSED TO OTHERS OR USED FOR ANY
PURPOSE OTHER THAN THAT WHICH IT WAS
OBTAINED WITHOUT THE EXPRESSED WRITTEN
CONSENT OF SAMTEC, INC.



520 PARK EAST BLVD, NEW ALBANY, IN 47150
PHONE: 812-944-6733 FAX: 812-948-5047
e-Mail info@SAMTEC.com code 55322

SHEET SCALE: 3:1

DESCRIPTION:
VITA 42 (LEADED) SOCKET ASSEMBLY

DWG. NO.
ASP-103612-05