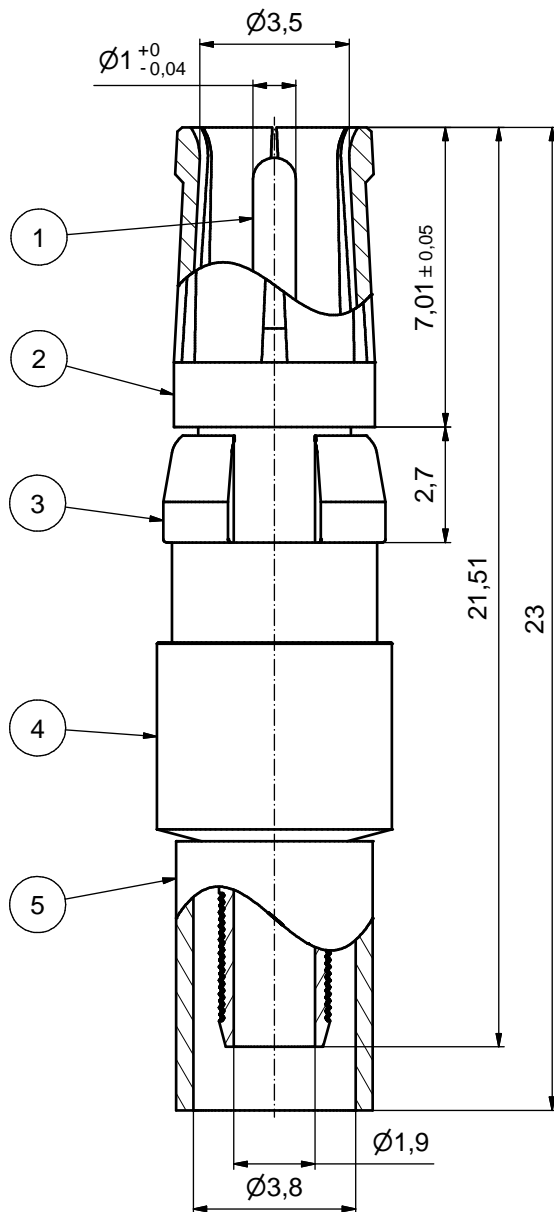
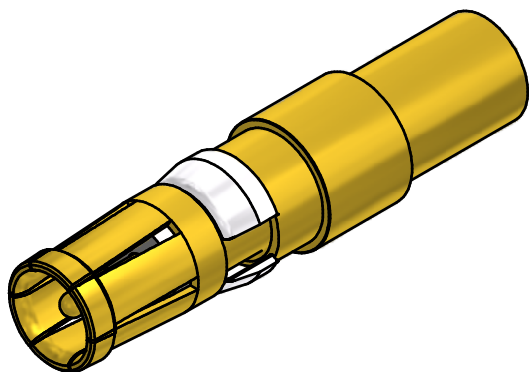
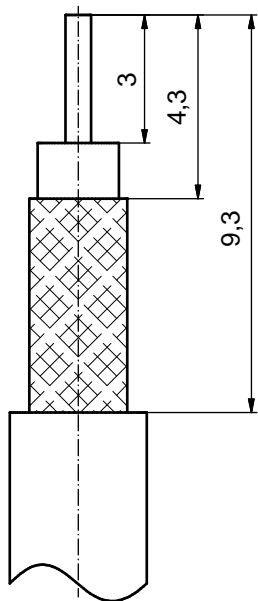


**STRIPPING DIMENSIONS**



**ASSEMBLY TOOLING:**

1. CENTER CONTACT:  
 USE CRIMP TOOL: 360X10329X  
 WITH TOOL INSERT: 360X11049X  
 SELECTOR SETTING: 5 (FOR AWG26 CENTER CONDUCTOR OF CABLE)
2. CRIMP FERRULE:  
 USE CRIMP TOOL: 360X10519X  
 WITH TOOL INSERT: 360X11039X  
 INSERT CAVITY B: HEX 3.83/151

| Part no.   | Finish Pos.1                                | Finish Pos.2                                | Finish Pos.3  | Finish Pos. 4/5        |
|------------|---|---|---------------|------------------------|
| 132J21029X | min. 50µin HARD GOLD over min. 50µin NICKEL | min. 30µin HARD GOLD over min. 50µin NICKEL | NICKEL PLATED | GOLD FLASH over NICKEL |
| 132A21029X | GOLD FLASH over NICKEL                      | GOLD FLASH over NICKEL                      | NICKEL PLATED | GOLD FLASH over NICKEL |

Directive 2002/95/EC RoHS compliant

|   |             |          |            |   |        |
|---|-------------|----------|------------|---|--------|
| THIS DRAWING MAY NOT BE COPIED OR REPRODUCED IN ANY WAY, AND MAY NOT BE PASSED ON TO A THIRD PARTY WITHOUT WRITTEN PERMISSION. OWNERSHIP AND COPYRIGHT OF CONEC GmbH DO NOT ALTER CAD DRAWING BY HAND | tolerance   |          | dim. in mm | scale: 8:1  |        |
|   |             |          |            | material: COPPER ALLOY (Pos. 1 - 5)   |        |
|   | drawn       | 12.10.10 | Schmidt    | title: COAXIAL CONTACT SOCKET 50 OHM  |        |
|   | appd.       | 12.10.10 | Koch       | inner + outer conductor for crimp termination for cable 316U double braided |        |
|   | norm        |          |            | dwg no: Inventor 10   | DIN-A3 |
| a   | Origin      |          | 13K2A035A  |   |        |
| rev.  | description | date     | name       | part no: see table  |        |

