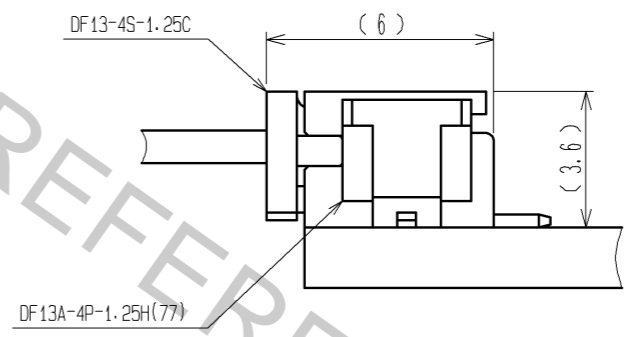
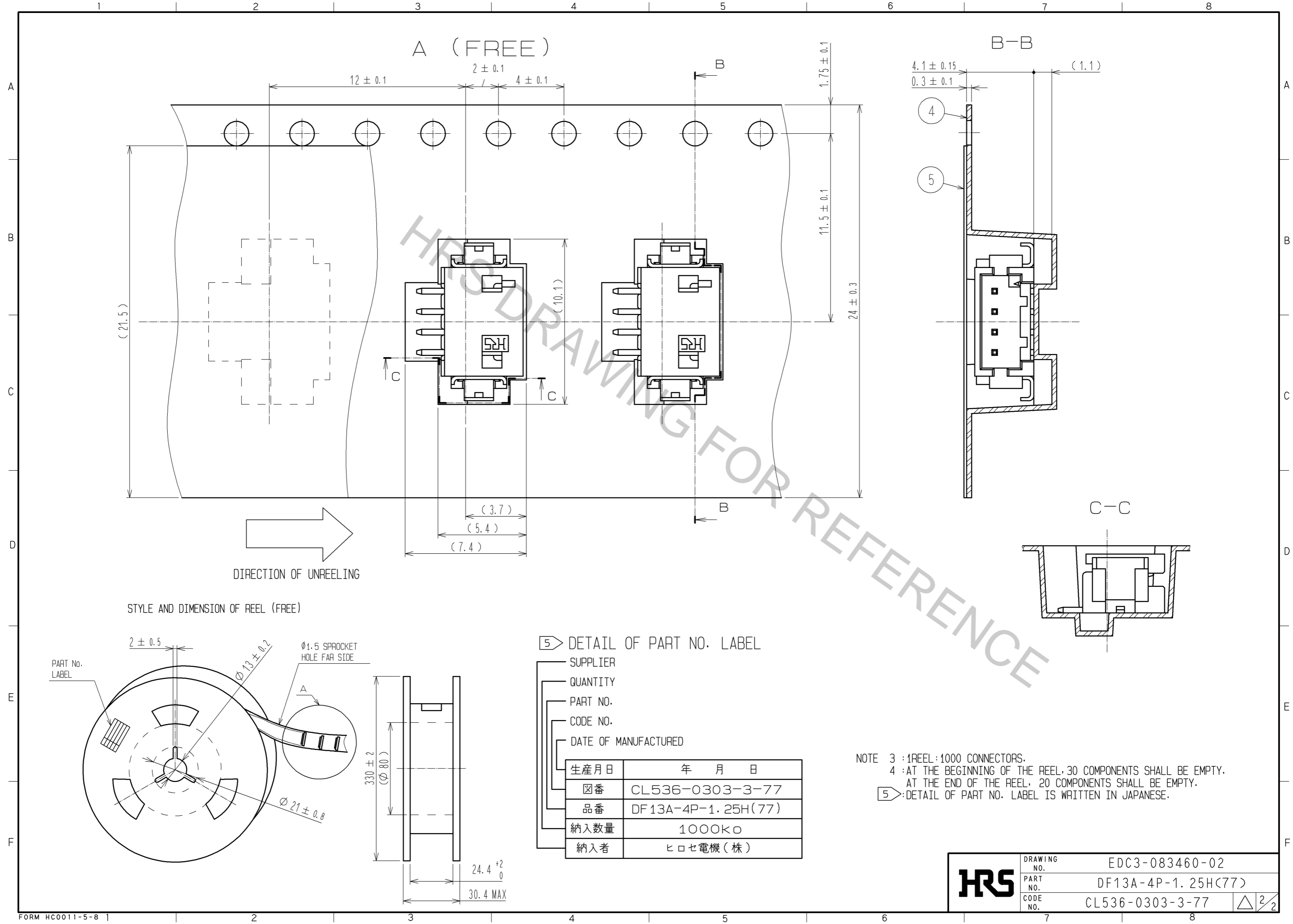


APPLICATION DRAWING



NOTE 1: FLATNESS OF LEAD WITH REINFORCED METAL FITTINGS SHALL BE WITHIN 0.1mm.  
 2: RECOMMENDED THICKNESS OF CREAM SOLDER PASTE: 0.15~0.2mm  
 OPEN AREA RATION: 100%

2	BRASS	SURFACE:GOLD PLATED 0.76μm min. UNDER:NICKEL PLATED 0.5μm min.	5	POLYESTER	COVER TAPE, CLEAR
1	POLYAMIDE	BEIGE(UL94V-0)	4	PS	EMBOSSED CARRIER TAPE, CLEAR
			3	PHOSPHOR BRONZE	SURFACE : TIN PLATED 1μm min.
NO.	MATERIAL	FINISH, REMARKS	NO.	MATERIAL	FINISH, REMARKS
UNITS mm		SCALE 5 : 1	COUNT 	DESCRIPTION OF REVISIONS	
APPROVED : KI. AKIYAMA			13.09.13	DRAWING NO. EDC3-083460-02	
CHECKED : HK. UMEHARA			13.09.12	PART NO. DF13A-4P-1.25H(77)	
DESIGNED : TS. KUMAZAWA			13.09.12	CODE NO. CL536-0303-3-77	
DRAWN : TS. KUMAZAWA			13.09.12	DATE	
<b>HRS</b> HIROSE ELECTRIC CO., LTD.				1/2	



<b>HRS</b>	DRAWING NO.	EDC3-083460-02
	PART NO.	DF13A-4P-1.25H(77)
	CODE NO.	CL536-0303-3-77
		$\triangle$ 2/2