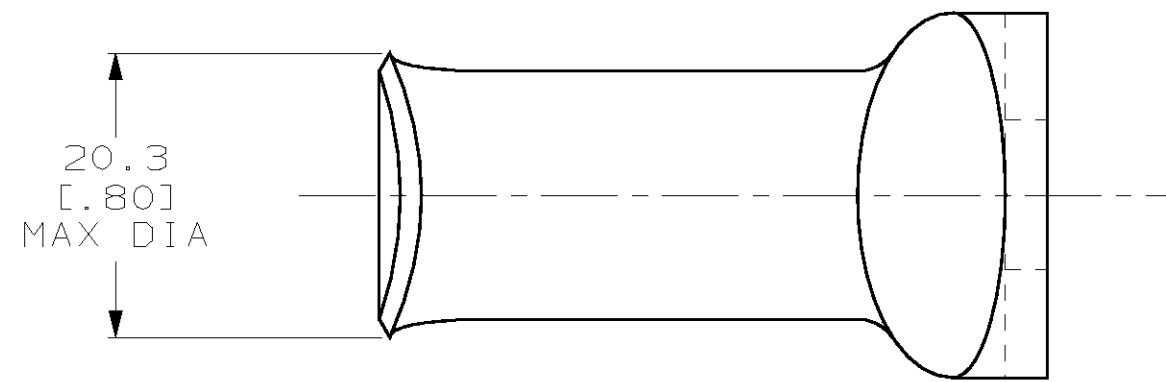
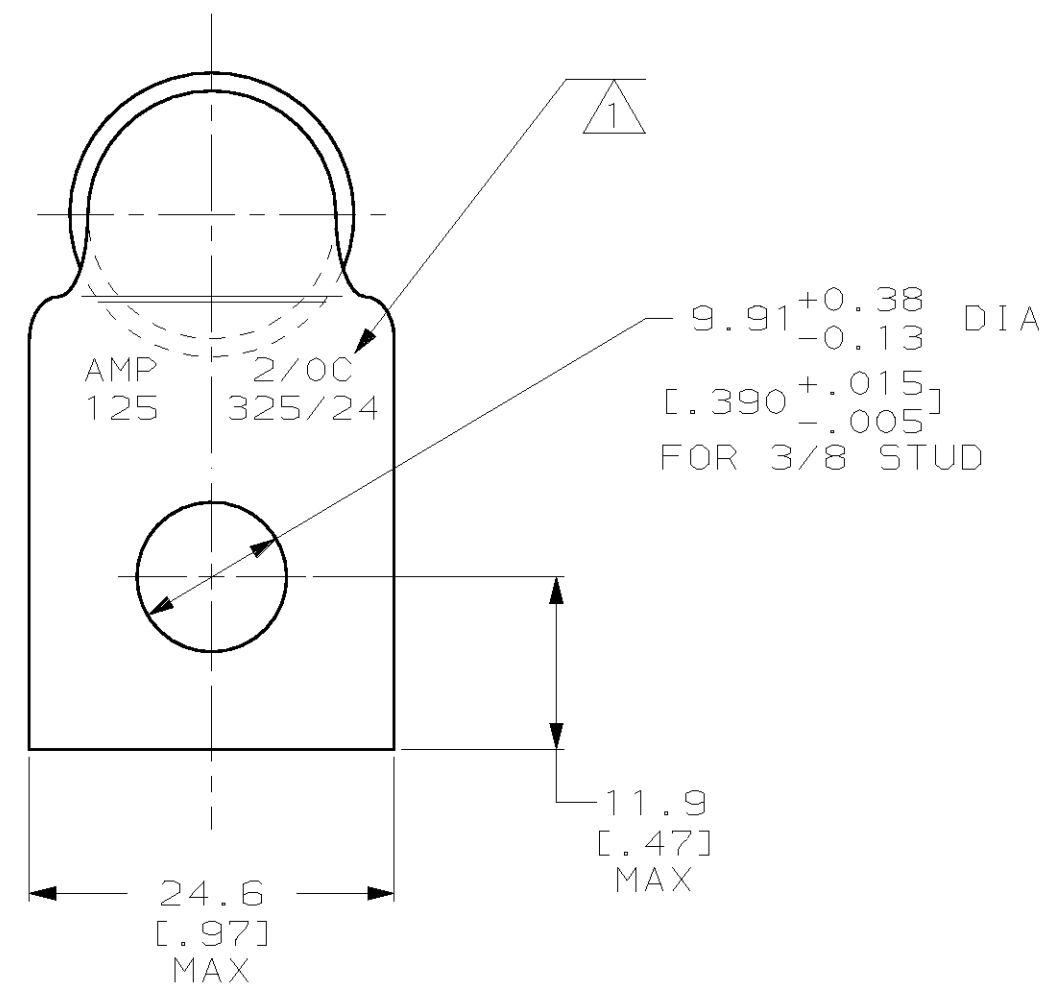
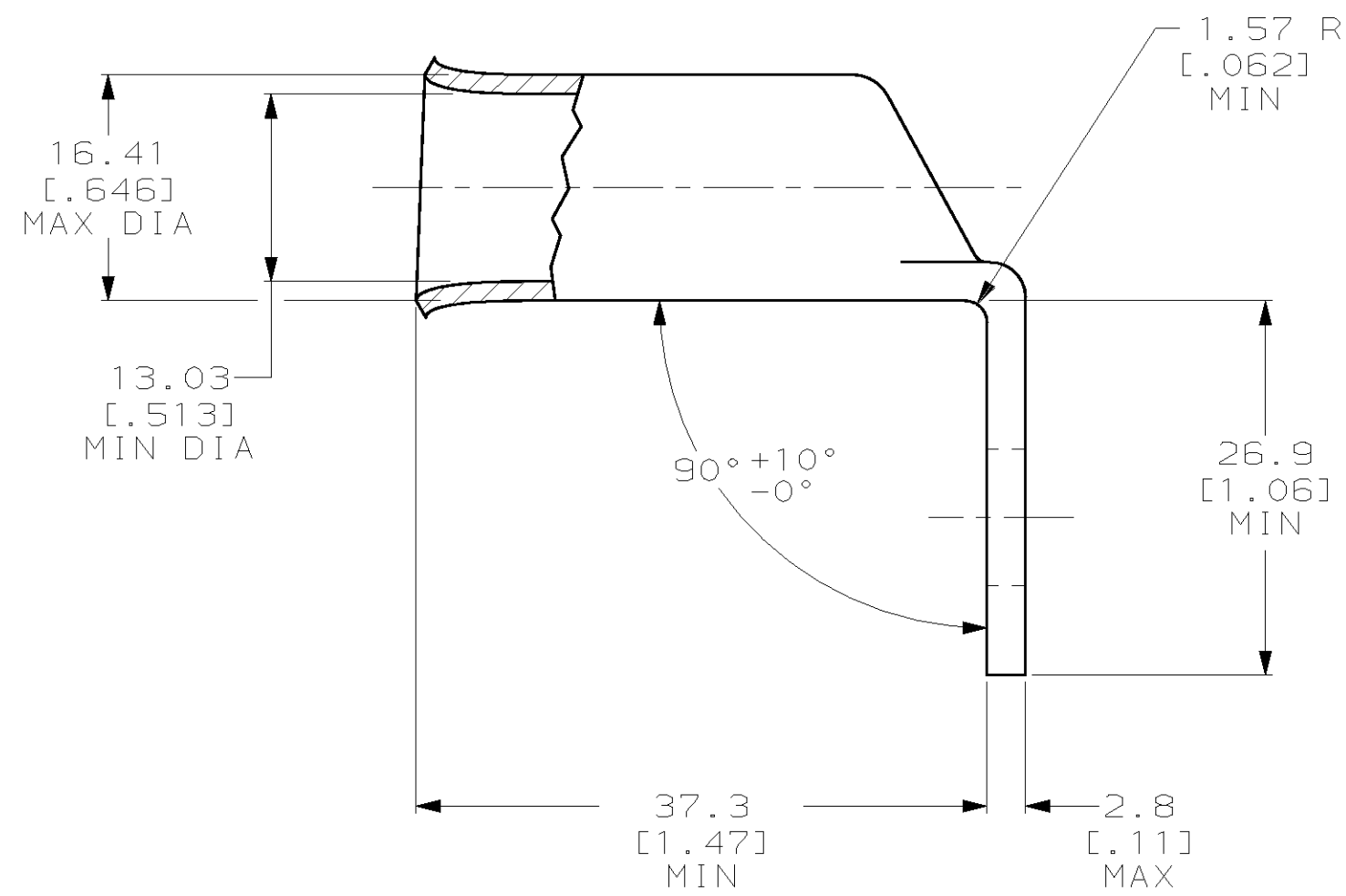


THIS DRAWING IS UNPUBLISHED. RELEASED FOR PUBLICATION
 (C) COPYRIGHT 19 BY AMP INCORPORATED. ALL RIGHTS RESERVED.

LOC		DIST		REVISIONS			
P	LTR	DESCRIPTION	DATE	DWN	APVD		
G	86	D	REV PER 063A-0561-01	070CT02	JR	MS	



△ STAMP AMP 2/0C 125 325/24 APPROX AS SHOWN



184259

184259-1
PART NUMBER

AMP INCORPORATED CUSTOMER SERVICE SYSTEMS		RECOMMENDED OPERATING TEMPERATURE: 170° MAX
FOR ADDITIONAL PRODUCT INFORMATION OR COPIES OF DRAWINGS AND TECHNICAL DOCUMENTS	PRODUCT INFORMATION CENTER 1-800-522-6752	VOLTAGE RATING: NOT APPLICABLE
FOR APPLICATION TOOLING INFORMATION	TOOLING ASSISTANCE CENTER 1-800-722-1111	WIRE CROSS SECTIONAL AREA RANGE: 60.6-76.3mm ² [119,500-150,500] CIR MILS SOLID OR STRANDED
FOR ORDER ENTRY	1-800-526-5142	

THIS DRAWING IS A CONTROLLED DOCUMENT FOR AMP INCORPORATED. IT IS SUBJECT TO CHANGE AND THE CONTROLLING ENGINEERING ORGANIZATION SHOULD BE CONTACTED FOR THE LATEST REVISION.		DWN DK SCHRUM 20DEC95	AMP Incorporated Harrisburg, PA 17105-3608	
DIMENSIONS: mm [INCHES]		CHK WJ VOCKROTH 02JAN96	NAME JL MECKLEY 02JAN96	
TOLERANCES UNLESS OTHERWISE SPECIFIED: 0 PLC ± 1 PLC ± 2 PLC ± 3 PLC ± 4 PLC ± ANGLES ±		APVD JL MECKLEY 02JAN96	PRODUCT SPEC 108-30200	
MATERIAL COPPER PER ASTM B-75 ANNEALED		FINISH TIN PLATE 0.00381 [0.00150] MIN THK PER ASTM B545	APPLICATION SPEC -	WEIGHT .072 lbs
		SIZE A2	CAGE CODE 00779	DRAWING NO C-184259
		CUSTOMER DRAWING		SCALE 2:1
		SHEET 1 OF 1		REV D