

REV. L

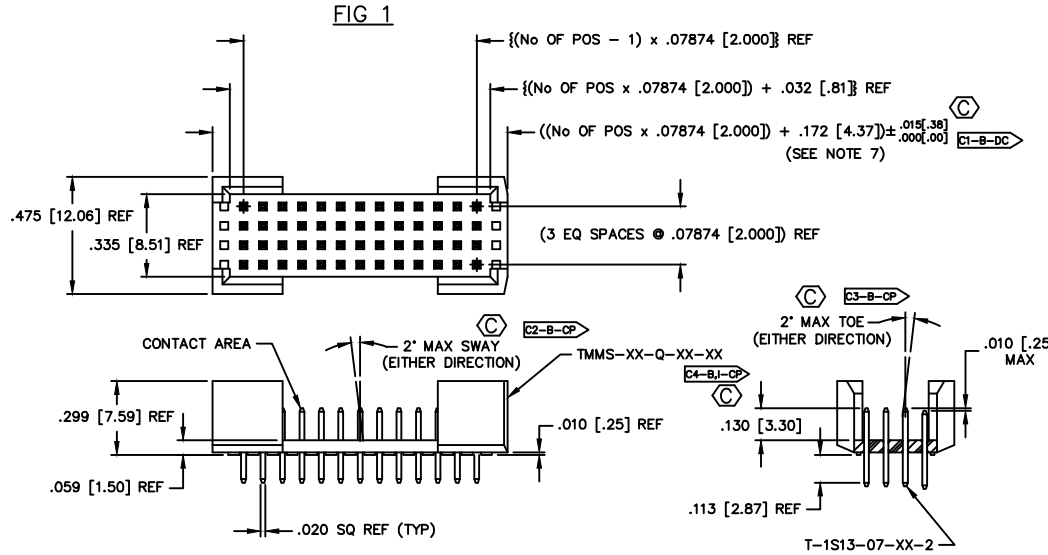
CRITICAL DIMENSION INSPECTION TABLE	
ASSEMBLY OPERATION	IN-PROCESS INSPECTOR
FILL	C1, C2, C3, C4
RA	C5, C6

DIMENSIONS ARE IN INCHES		UNLESS OTHERWISE NOTED	TOLERANCES ARE:
ONE PLACE DECIMALS ±.1	THREE PLACE DECIMALS ± .005	ANGLES ± 5°	
TWO PLACE DECIMALS ±.01	FOUR PLACE DECIMALS ± .002		

TITLE: 2mm QUAD ROW SHROUDED TERMINAL ASM

DWG NO: TMMS-1XX-XX-XX-Q-XX-XX
SHEET 1 OF 2

DO NOT SCALE FROM THIS PRINT



TMMS-1XX-XX-XX-Q-XX-XX

NO. OF POSITIONS: -05 THRU -50

LEAD STYLE: -01: .130 [3.30] POST

PLATING:

- G: 10μ" GOLD IN CONTACT AREA, 10μ" GOLD ON TAIL
- S: 30μ" SELECTIVE GOLD IN CONTACT AREA, MATTE TIN ON TAIL
- L: 10μ" SELECTIVE GOLD IN CONTACT AREA, MATTE TIN ON TAIL
- F: 3μ" SELECTIVE GOLD IN CONTACT AREA, MATTE TIN ON TAIL
- H: 30μ" SELECTIVE GOLD IN CONTACT AREA, 3μ" GOLD ON TAIL
- LM: 10μ" SELECTIVE GOLD IN CONTACT AREA, MATTE TIN ON TAIL
- FM: 3μ" GOLD IN CONTACT AREA, MATTE TIN ON TAIL
- SM: 30μ" SELECTIVE GOLD IN CONTACT AREA, MATTE TIN ON TAIL

* = NOT RELEASED FOR PRODUCTION

OPTIONS:

- *-BL: MOLDED BOARD LOCKS (AVAILABLE WITH -RA ONLY) (USE TMMS-XX-Q-XX-BL) (SEE FIG 3, SHT 2)
- *-A: MOLDED ALIGNMENT PIN (AVAILABLE WITH -RA ONLY) (USE TMMS-XX-Q-XX-A) (SEE FIG 4, SHT 2)

OPTION:

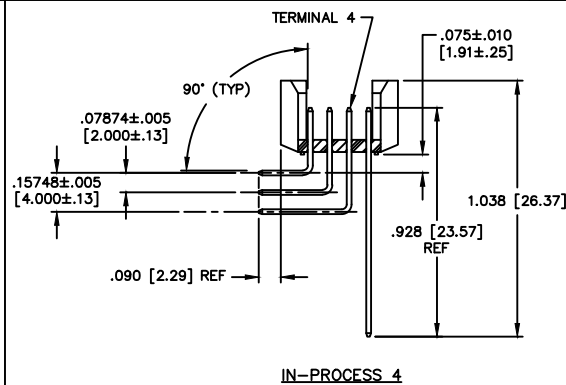
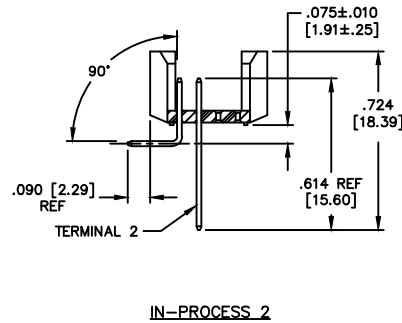
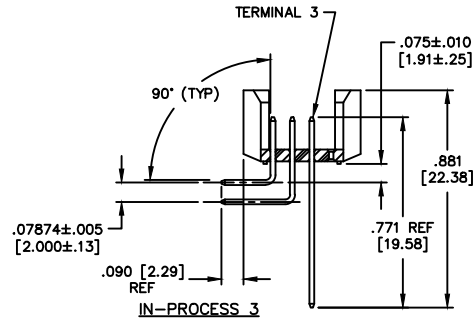
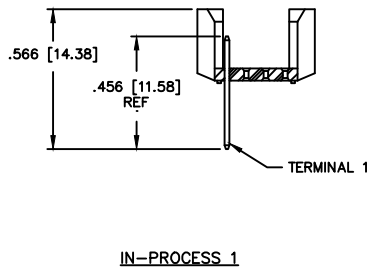
- RA: RIGHT ANGLE (SEE FIG 2) (LEAVE BLANK FOR THRU HOLE VERSION)

ROW SPECIFICATION:

- Q: QUAD ROW (SEE FIG 1) (USE TMMS-XX-Q-XX)

NOTES:

- 1.) MAX. ALLOWABLE BOW: .005 IN/IN AFTER ASSEMBLY.
- 2.) MAX. PIN ROTATION IN BODY: 2°
- 3.) PUSHOUT FORCE SHALL BE 1 lb MIN.
- 4.) (C) REPRESENTS A CRITICAL DIMENSION.
- 5.) ALL DIMENSIONS IN BRACKETS [] TO BE MILLIMETERS.
- 6.) ALL DIMENSIONS TO BE SYMMETRICAL ABOUT C.L. WITHIN A VARIANCE OF .002 [.051] UNLESS OTHERWISE NOTED.
- 7.) .010 [.25] MAX CUT FLASH (BRUSH CLEAN AS NECESSARY).



TERMINAL 1	TERMINAL 2	TERMINAL 3	TERMINAL 4
T-1S13-13-XX-2	T-1S13-14-XX-2	T-1S13-23-XX-2	T-1S13-24-XX-2

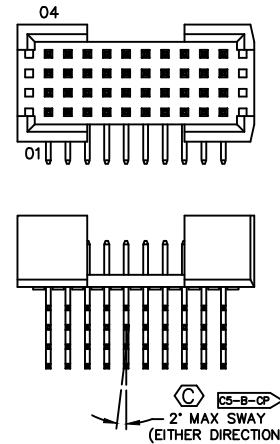


FIG 2

-RA: RIGHT ANGLE OPTION (DIFFERENT AS SHOWN, OTHERWISE SAME AS FIG 1)

MISC\MKTG
TMMS-1XX-XX-XX-Q-XX-XX-MKT

PROPRIETARY NOTE
THIS DOCUMENT CONTAINS INFORMATION CONFIDENTIAL AND PROPRIETARY TO SAMTEC INC. AND SHALL NOT BE REPRODUCED OR TRANSMITTED IN ANY FORM OR BY ANY MEANS, ELECTRONIC OR MECHANICAL, INCLUDING PHOTOCOPYING, RECORDING, OR BY ANY INFORMATION STORAGE AND RETRIEVAL SYSTEM, WITHOUT THE EXPRESS WRITTEN CONSENT OF SAMTEC INC.

MATERIAL:
INSULATOR:
LCP VECTRA E130, UL RATED 94V-0
COLOR: BLACK
TERMINAL:
SPRING TEMPER PHOS BRONZE

samtec

520 PARK EAST BLVD. NEW ALBANY, INDIANA 47150
PHONE (812) 944-6733 P.O. BOX 1147
CODE 55322

MADE BY:
BRATCHER 6-18-98

TMMS-1XX-XX-XX-Q-XX-XX
SHEET 1 OF 2