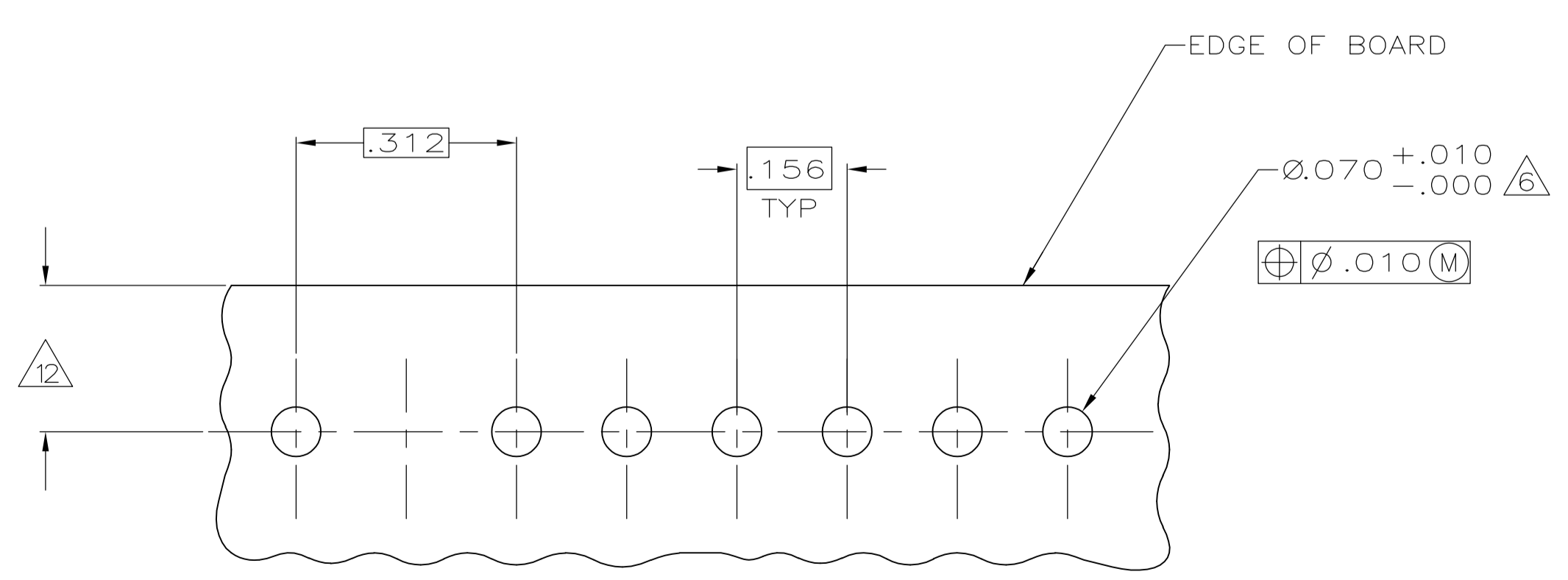
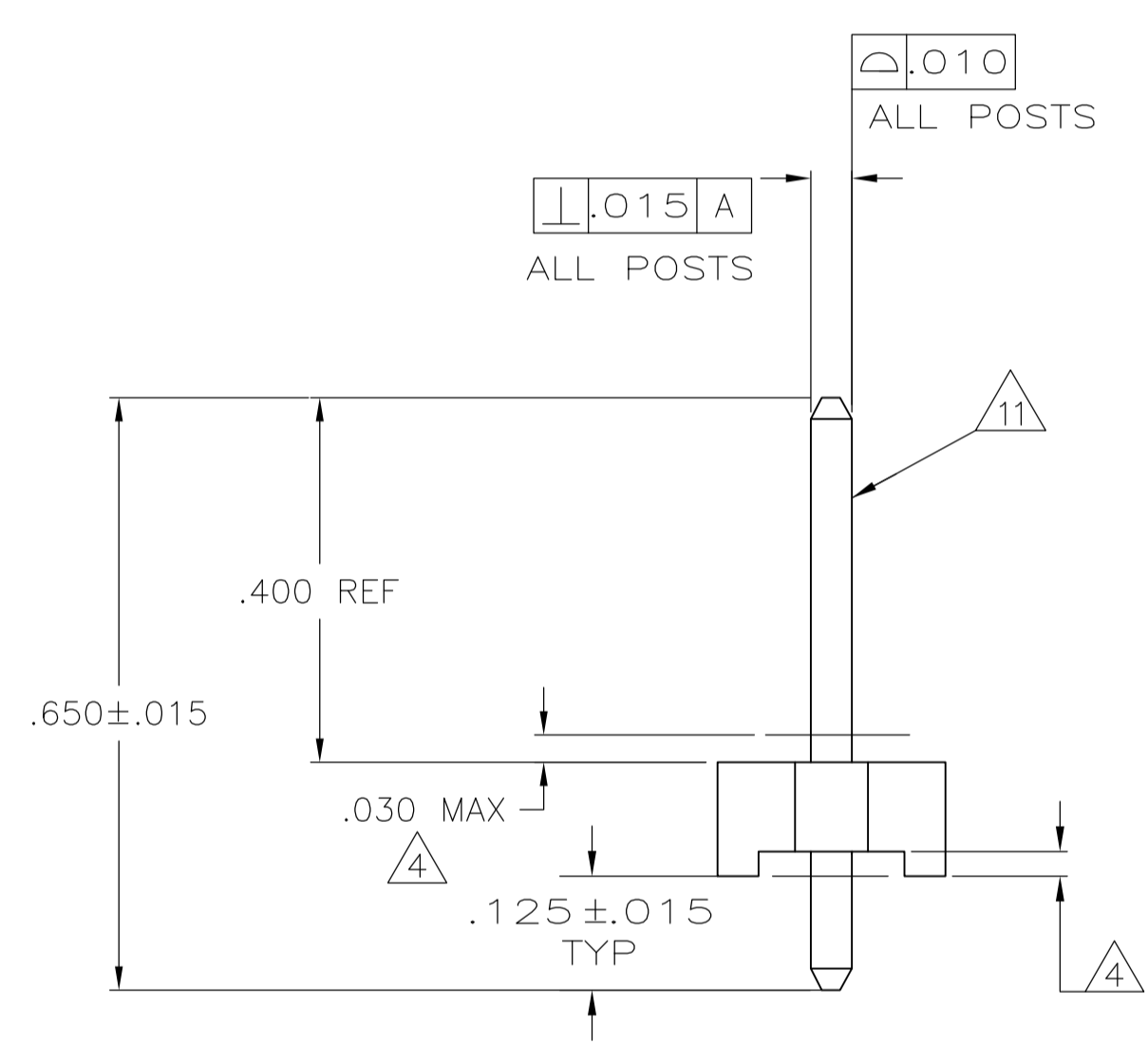
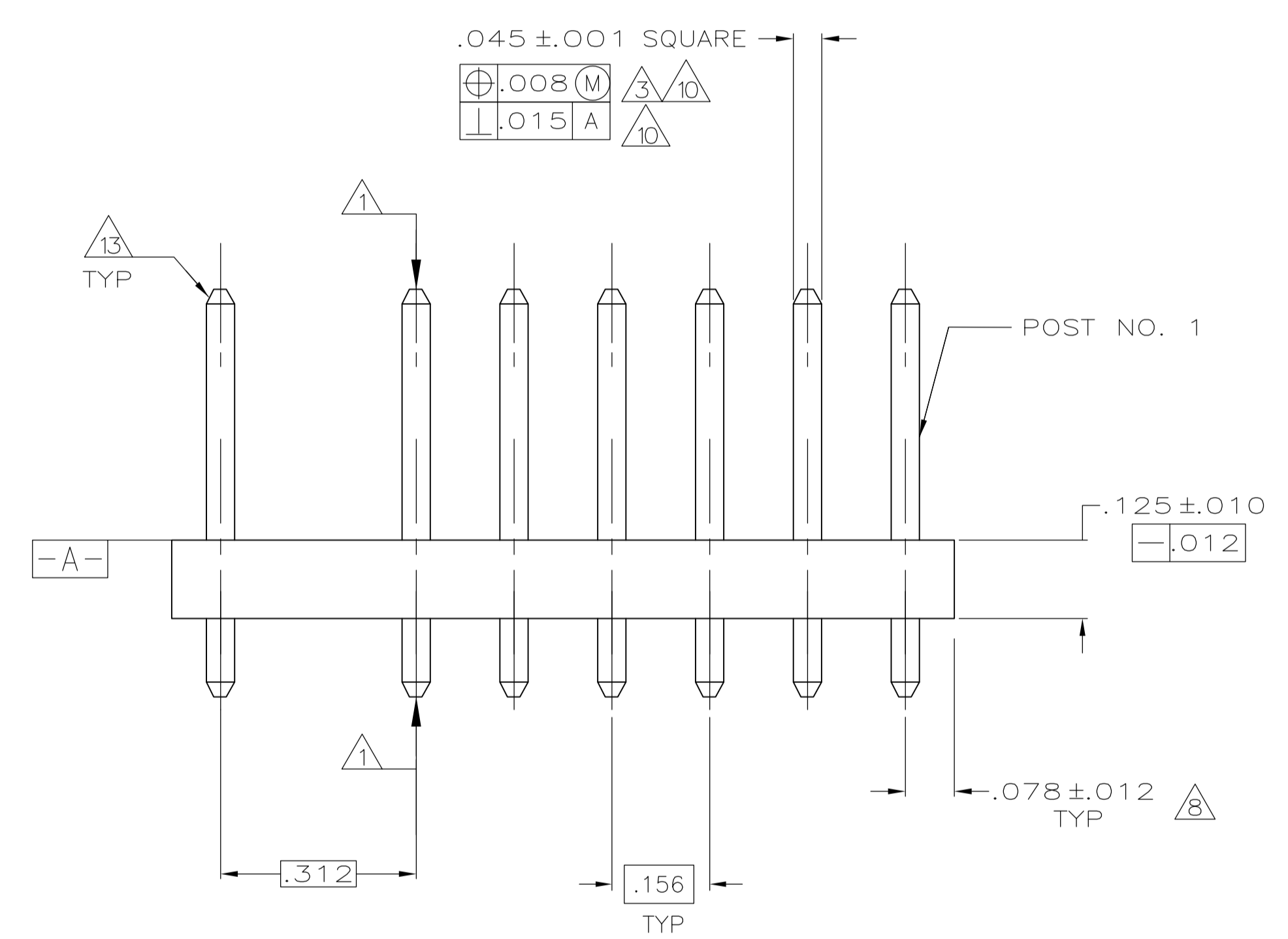
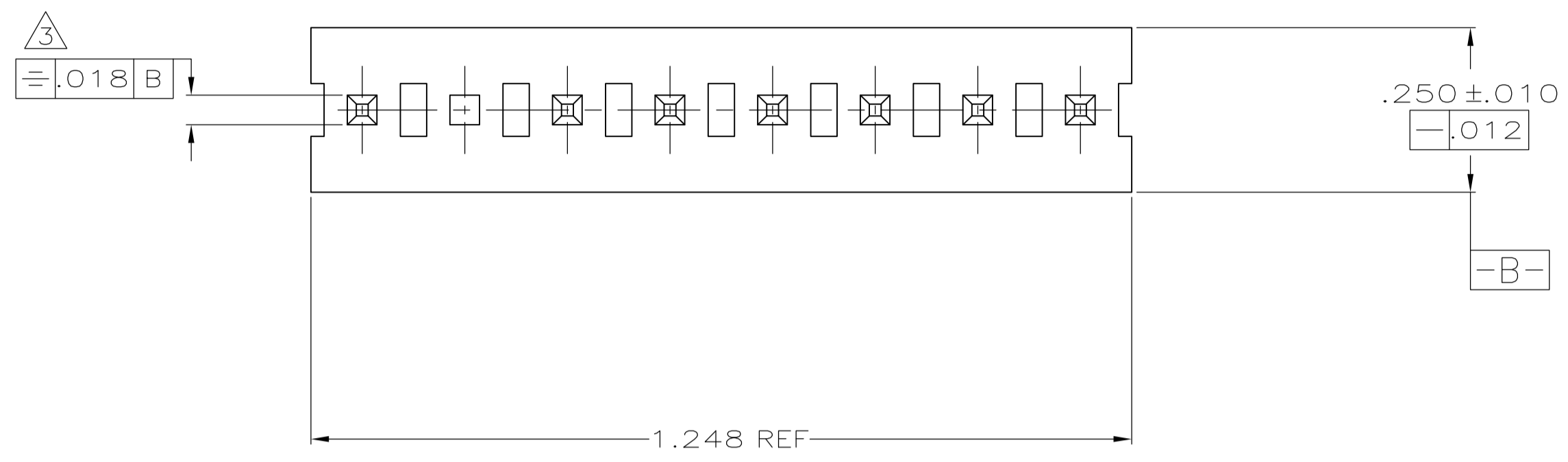


LOC		DIST		REVISIONS			
CM	0	REV	DATE	BY	CHK	APPV	
E		REVISED PER ECO-12-016930	05OCT12	KH	SM		

- 1 POST TO WITHSTAND 13 NEWTONS (3LBS.) MIN. AXIAL FORCE IN BOTH DIRECTIONS SHOWN WITHOUT DISLODGING.
- 2 TOLERANCES APPLY TO SOLDER SIDE OF BOARD.
- 3 MEASURED AT SURFACE \square -A-
- 4 PLASTIC FLASH PERMITTED IN THIS AREA.
- 5 PARTS COMPLY WITH AMP SOLDERABILITY SPEC. NO. 109-11-2.
- 6 ONE HOLE MAY BE UNDERSIZED (.065/.060 DIA.) FOR ASSEMBLY RETENTION DURING WAVE SOLDERING.
- 7 MATERIAL: HEADER-THERMOPLASTIC POLYESTER
GLASS-FILLED 94V-0(NATURAL)
POST-COPPER ALLOY (TIN PLATED)
- 8 COORDINATE DIMENSION APPLIES FROM CENTER OF ACTUAL FEATURE.
- 9 PLASTIC BURRS CAUSED BY CUT-OFF TOOLING ARE PERMITTED WITHIN THE MAXIMUM TOLERANCE ENVELOPE.
- 10 POST TO BE MEASURED WHEN STRIP IS HELD FLAT.
- 11 POST MUST WITHSTAND TWO 90° BENDS AGAINST EXTRUSION WITHOUT BREAKING.
- 12 DIMENSION SHOULD BE .140 MIN WHEN MATING WITH A MTA 156 CONNECTOR ASSEMBLY OR A SL-156 CONNECTOR ASSEMBLY.
- 13 PIN BURR OF .005 MAX. VERTICAL AND .003 MAX. HORIZONTAL PERMITTED AT POST TIPS ON BOTH ENDS.



RECOMMENDED MOUNTING HOLE PATTERN FOR .063 THICK P.C. BOARD

IN	MM	IN	MM
.060	1.52	1.248	31.70
.045	1.14	.700	17.78
.030	0.76	.450	11.43
.018	0.46	.312	7.92
.015	0.38	.250	6.35
.012	0.30	.156	3.96
.010	0.25	.140	3.56
.008	0.20	.125	3.18
.005	0.13	.078	1.98
.003	0.08	.070	1.78
.001	0.03	.065	1.65
.000	0.00	.063	1.60

CONVERSION TABLE

REV	DESCRIPTION	DATE	BY	CHK	APPV
5 & 7					644968-4
2 & 5					644968-3
5					644968-2
7					644968-1

OBSELETE

POST NUMBER OMITTED	PART NUMBER

644968-1 SHOWN

THIS DRAWING IS A CONTROLLED DOCUMENT.		DWG: K. WHITAKER 18APR2006	TE Connectivity	
DIMENSIONS: INCHES		CHK: D. ROSSI 18APR2006	NAME: MTA-156 HEADER ASSEMBLY, PLAIN, STRAIGHT, .045, SQUARE POST, 8 POSITION, OMITTED POST, TIN PLATED	
TOLERANCES UNLESS OTHERWISE SPECIFIED:		APVD: D. ROSSI 18APR2006	APPLICATION SPEC: 8 POSITION, OMITTED POST, TIN PLATED	
0. PLC ± -		SIZE: A1	DRAWING NO: 00779	
1. PLC ± -		WEIGHT: -	SCALE: 5:1	
2. PLC ± -		CUSTOMER DRAWING		SHEET 1 OF 1
3. PLC ± .005		REV: E		
4. PLC ANGLES ± -				