

1

2

3

4

5

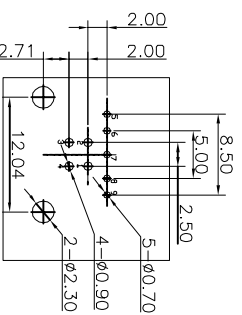
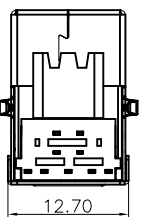
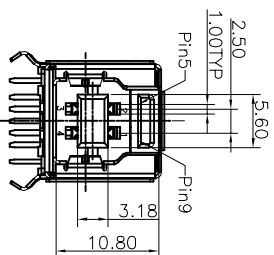
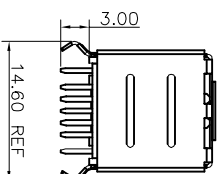
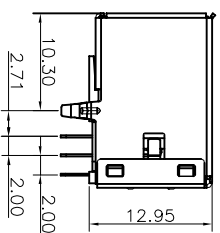
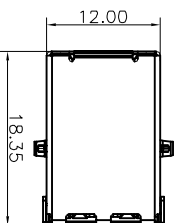
6

7

A

NOTES:

1. Material:
 - 1.1 Housing: PBT+30%GF UL94V-0, Color Blue
 - 1.2 Shell: Brass
 - 1.3 Contact :Copper Alloy
2. FINISH:
 - 2.1 Contact Area: Selective 15u"Au
Solder Area: Tin Plated
Under: Ni Plated
3. MECHANICAL:
 - 3.1 Mating Force:3.57kgf Max.
 - 3.2 Unmating Force:1.02kgf Min
 - 3.3 Durability:1500 cycles Min
4. ELECTRICAL:
 - 4.1 Current Rating:1.0A
 - 4.2 Dielectric Strength:100V AC FOR 1 MINUTE
 - 4.3 Contact Resistance:30mΩ Max
 - 4.4 Insulation Resistance:100 MΩ Min
 5. Operating temperature: -55°C TO +85°C
 6. PACKING: Tray



RECOMMENDED P.C.B LAYOUT
(TOLERANCE:±0.05)

G

Scale	Free
TOLERANCE	
.X	±0.30
.XX	±0.20
.XXX	±0.10
DIM	TOL
X. °	±5°
Angle	TOL
UNIT	mm

Customer-No.

Date

Name

Drawn 07.06.2013

Winnie

Approved 07.06.2013

Winnie

ASSMANN WSW-No.
AU-Y1007-3-R

Drawing-No.

ASS 5779 CO rev00

Replace

SHEET

RoHS compliant

H

1

2

3

4

5

6

7

1	2	3	4	5	6	7
---	---	---	---	---	---	---

H	G	F	E	D	C	B	A
---	---	---	---	---	---	---	---