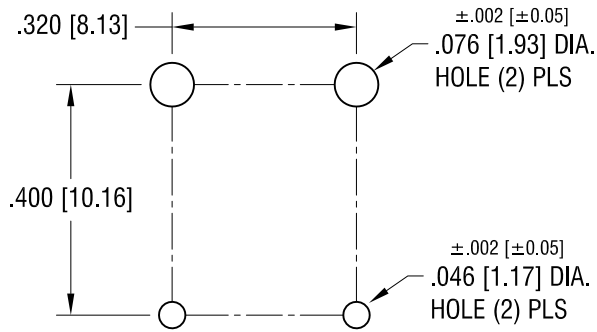
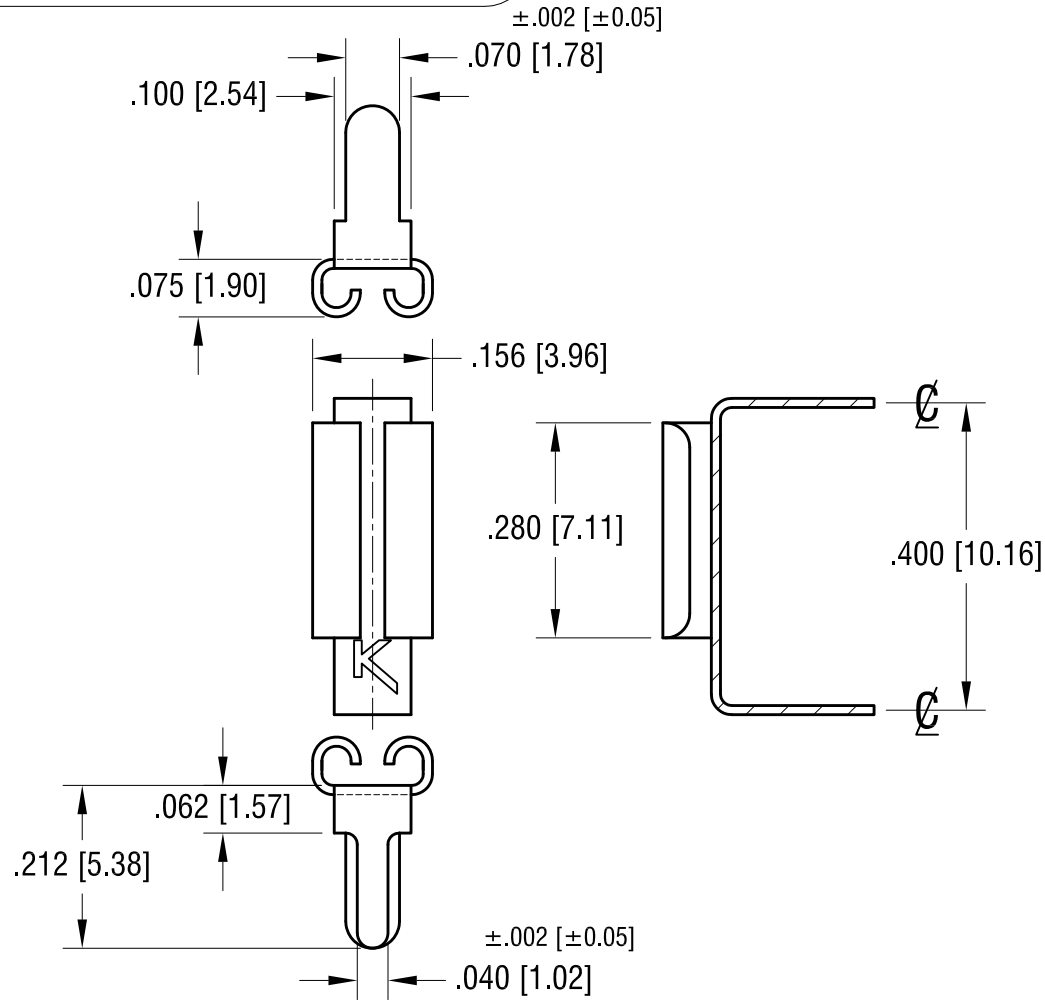


THIS DOCUMENT IS THE PROPERTY OF
KEYSTONE ELECTRONICS CORP. AND
SHALL NOT BE REPRODUCED, DISTRIBUTED
OR USED AS A BASIS FOR MANUFACTURE
WITHOUT PRIOR WRITTEN PERMISSION
FROM KEYSTONE ELECTRONICS CORP.

MOUNTING DETAIL



ACTUAL SIZE



KEYSTONE ELECTRONICS CORP.

www.keyelco.com • ASTORIA, N.Y. 11105-2017 • Tel (718) 956-8900

PART NAME
.110 x .032 PC QUICK-FIT CONNECT

MATERIAL
.012 [0.30] TH'K BRASS

FINISH TIN NICKEL PLATE	DRN BY BOONE	DATE 12.1.94
	APP'D LN	SCALE 4X

TOLERANCES	INCH [MM]	CODE	DWG NO.
DECIMAL	± .005 [± 0.15]	C	3549
ANGULAR	± 1°		
UNLESS OTHERWISE SPECIFIED			

9.10.12	CHANGE AS PER ECN 12-134	D
11.12.09	CHANGE AS PER ECN 09-167	C
10.18.05	CHANGE AS PER ECN 05-076	B
DATE	DESCRIPTION	REV.