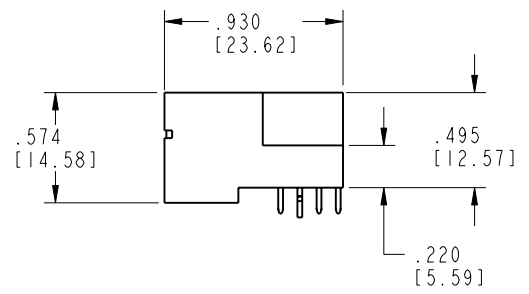
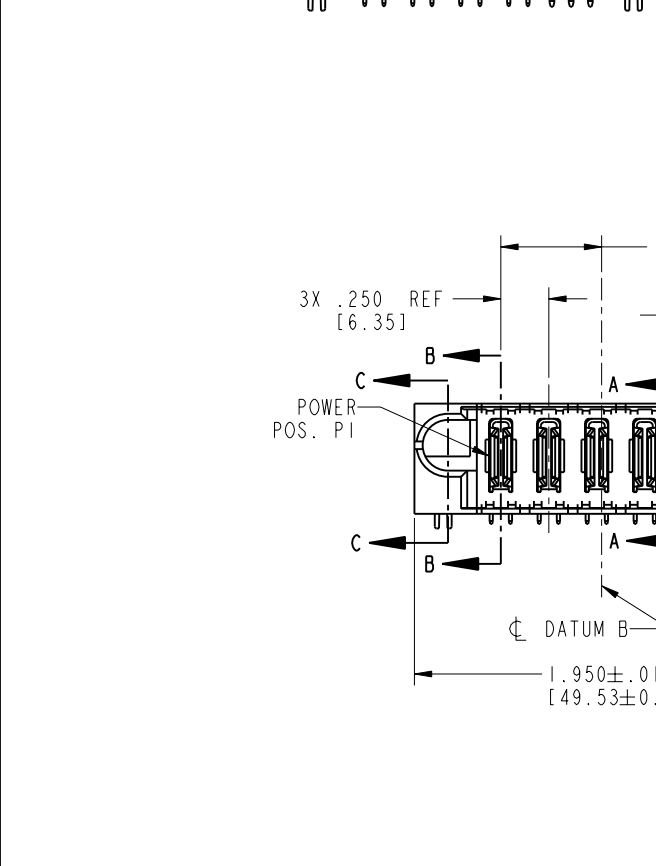
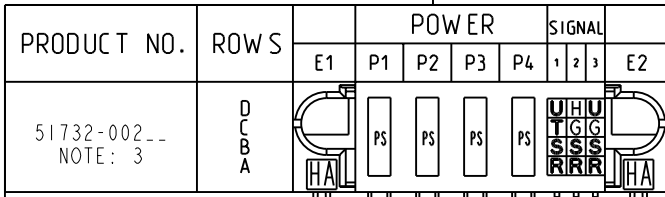


Tous droits strictement réservés. Reproduction ou communication o des liens interdité sous quelque forme que ce soit sans autorisation écrite du propriétaire. Propriete de c FCI. Droits de reproduction FCI.

All rights strictly reserved. Reproduction or issue to third parties in any form whenever is not permitted without written authority from the proprietor. Property of FCI. Copyright FCI.

FCI



CODE	DIM "M"	MATING LENGTH	CONTACT TYPE
G	.220	[5.59]	SIGNAL
H	.220	[5.59]	SIGNAL
R	.270	[6.86]	SIGNAL
S	.270	[6.86]	SIGNAL
T	.270	[6.86]	SIGNAL
U	.270	[6.86]	SIGNAL
PS	N/A	[N/A]	POWER
HA	N/A	[N/A]	HOLD-DOWN

mat'l code				SEE NOTE 2				tolerances unless otherwise specified				CUSTOMER				FCI www.fciconnect.com			
ltr	ecn no.	dr	date	linear	.XX±.01/0.X±0.3				COPY				title						
A	V02738	JRW	11/21/00		.XXX±.005/0.XX±0.13				projection				4P + 12S						
B	V21294	TAB	09/10/02		.XXX±.0020/0.XXX±0.051				INCH/MM				RIGHT ANGLE SOLDER HEADER						
C	DG05-0501	GuoJM	11/24/05	angles	0°±2°				scale				product family						
				dr	T. BRUNGARD	09/10/02				1:1				PwrBlade					
				engr	M. MOSTOLLER	09/10/02								code					
				chr	M. MOSTOLLER	09/10/02								size					
				appd	M. MOSTOLLER	09/10/02								dwg no					
												A				51732-002			
sheet index				revision sheet				C C C C								sheet			
				1 2 3 4												1 of 4			

1 | 2

Pro/E

3 |

cage code 22526

4

PDM: Rev:C

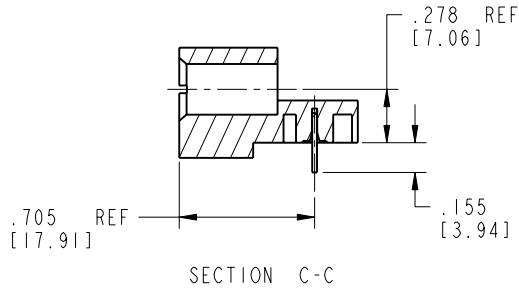
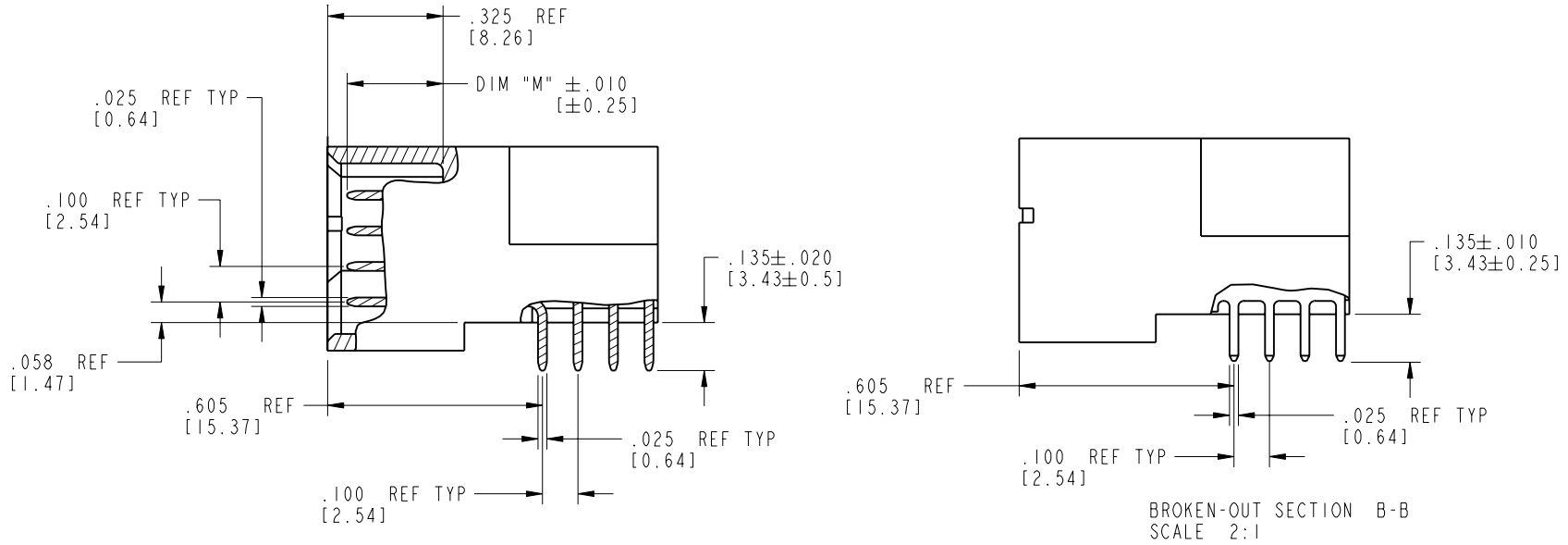
STATUS: Released

Printed: Dec 20, 2010

Tous droits strictement réservés. Reproduction ou communication o des liens interdite sous quelque forme que ce soit sans autorisation écrite du propriétaire. Propriété de c FCI. Droits de reproduction FCI.

All rights strictly reserved. Reproduction or issue to third parties in any form, whatever is not permitted without written authority from the proprietor. Property of FCI. Copyright FCI.

PRODUCT NUMBER
51732-002--
NOTE: 3



mat'l code		SEE NOTE 2		tolerances unless otherwise specified		CUSTOMER		 www.fciconnect.com	
lfr	ecn no.	dr	date	linear	.XX±.01/0.X±0.3	COPY			
c				projection	.XXX±.005/0.XX±0.13			title	4P + 12S
				angles	.XXX±.0020/0.XXX±0.051			RIGHT ANGLE SOLDER HEADER	
				dr	T. BRUNGARD 09/10/02	INCH/MM		product family	PwrBlade
				engr	M. MOSTOLLER 09/10/02	scale		code	213
				chr	M. MOSTOLLER 09/10/02	1:1		size	dwg no
				appd	M. MOSTOLLER 09/10/02			A	51732-002
sheet index	revision sheet							sheet	2 of 4

cage code 22526

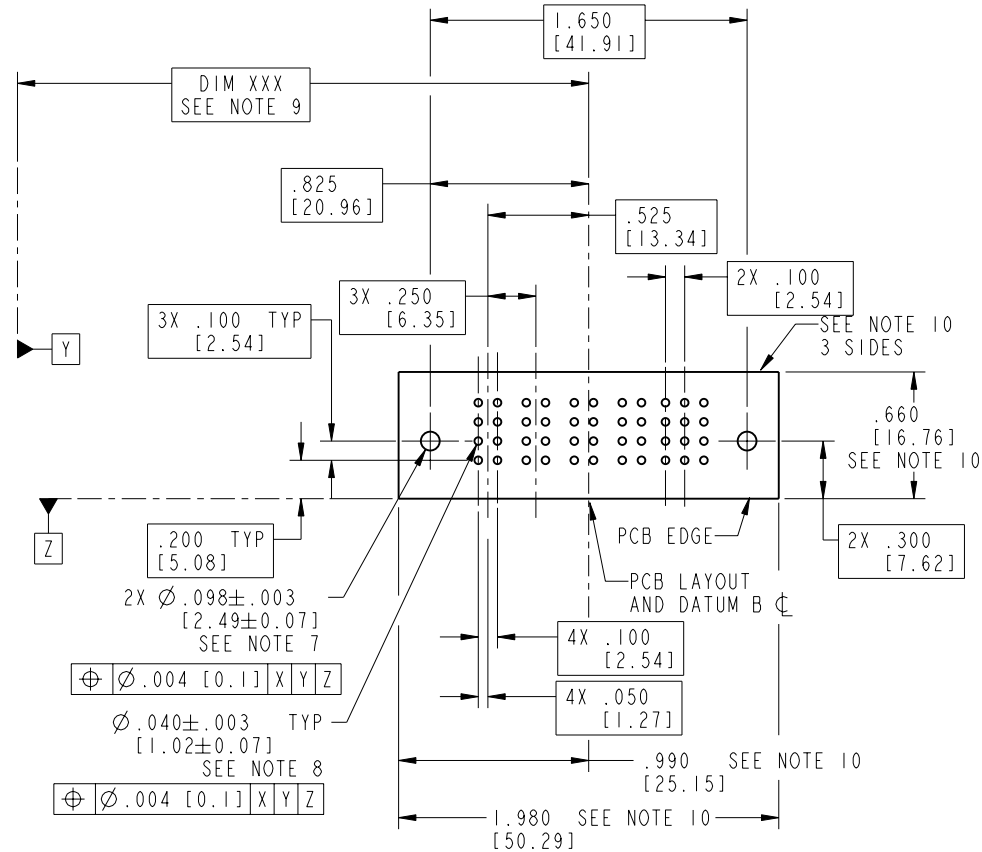
Pro/E

Tous droits strictement réservés. Reproduction ou communication o des liers interdite sous quelque forme que ce soit sans autorisation écrite du propriétaire. Propriete de c FCI. Droits de reproduction FCI.



All rights strictly reserved. Reproduction or issue to third parties in any form, whatever is not permitted without written authority from the proprietor. Property of FCI. Copyright FCI.

PRODUCT NUMBER
51732-002--
NOTE: 3



RECOMMENDED PCB LAYOUT

mat'l code SEE NOTE 2				tolerances unless otherwise specified		CUSTOMER	FCI www.fciconnect.com		
lfr	ecn no.	dr	date	linear	.XX±.01/0.XX±0.3	COPY	title	4P + 12S	
c				projection	.XXX±.005/0.XX±0.13		RIGHT ANGLE SOLDER HEADER		
				angles	.XXX±.0020/0.XXX±0.051		product family	PwrBlade	code
				dr	T. BRUNGARD 09/10/02	INCH/MM scale 1:1	size	dwg no	213
				enrg	M. MOSTOLLER 09/10/02		A	51732-002	sheet
				chr	M. MOSTOLLER 09/10/02		3 of 4		
				appd	M. MOSTOLLER 09/10/02				
sheet index	revision sheet								

cage code 22526

Pro/E

PDM: Rev:C

STATUS: Released

Printed: Dec 20, 2010

Tous droits strictement réservés. Reproduction ou communication o des liers interdite sous quelque forme que ce soit sans autorisation écrite du propriétaire. Propriete de c FCI. Droits de reproduction FCI.

A FCI

All rights strictly reserved. Reproduction or issue to third parties in any form, whenever is not permitted without written authority from the proprietor. Property of FCI. Copyright FCI.

B

PRODUCT NUMBER

51732-002--
NOTE: 3

NOTES:

1. DIMENSIONS AND TOLERANCES ARE IN ACCORDANCE WITH ASME Y14.5M, 1994 UNLESS OTHERWISE SPECIFIED.

CONNECTOR NOTES:

2. HOUSING MATERIAL: UL 94 V-0 GLASS FILLED
HIGH-TEMP THERMOPLASTIC
POWER CONTACT MATERIAL: COPPER ALLOY
SIGNAL PIN MATERIAL: COPPER ALLOY

3. PLATING:
51732-002 Singal Pin:30u"/0.76um Au OVER 50u"/1.27um Ni ON THE CONTACT AREA.
AND 100u"/2.54um SnPb PLATING OVER 50u"/1.27um Ni ON THE TERMINATION SECTION.
Power Pin:30u"/0.76um Au OVER 50u"/1.27um Ni ON THE CONTACT AREA,
AND 100u"/2.54um SnPb PLATING OVER 50u"/1.27um Ni ON THE TERMINATION SECTION.
51732-002LF Singal Pin:30u"/0.76um Au OVER 50u"/1.27um Ni ON THE CONTACT AREA.
AND 78u"/2.00um Sn PLATING OVER 50u"/1.27um Ni ON THE TERMINATION SECTION.
Power Pin:30u"/0.76um Au OVER 50u"/1.27um Ni ON THE CONTACT AREA,
AND 78u"/2.00um Sn PLATING OVER 50u"/1.27um Ni ON THE TERMINATION SECTION.

PART NUMBER 51732-002LF MEETS EUROPEAN UNION DIRECTIVE AND OTHER COUNTRY REGULATIONS AS DESCRIBED IN GS-22-008.

THE HOUSING WILL WITHSTAND EXPOSURE TO 260° PEAK TEMPERATURE FOR 10 SECONDS IN A WAVE SOLDER APPLICATION WITH A CIRCUIT BOARD.

4. MANUFACTURER'S NAME, P/N, AND DATE CODE TO APPEAR ON THIS SURFACE.

5. PRODUCT SPECIFICATION GS-12-149.
APPLICATION SPECIFICATION BUS-20-067.


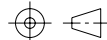
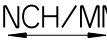

PCB NOTES:

6. ALL HOLE DIAMETERS ARE FINISHED HOLE SIZE.
7. MOUNTING HOLES, WHERE APPLICABLE, ARE UNPLATED.

8. $\varnothing .0453 \pm .0010$ [1.151 ± 0.025] DRILLED HOLES PLATED WITH .0003 [0.008] MIN SnPb OVER .001 [0.03] TO .003 [0.08] Cu PLATING TO ACHIEVE $\varnothing .040 \pm .003$ [1.02 ± .07] HOLE.

9. "DIM XXX" TO BE DETERMINED BY THE CUSTOMER.

10. CONNECTOR KEEP-OUT ZONE.

mat'l code		SEE NOTE 2		tolerances unless otherwise specified		CUSTOMER		 FCI www.fciconnect.com	
lfr	ecn no.	dr	date	linear	.XX±.01/0.X±0.3	COPY			
C				projection	.XXX±.005/0.XX±0.13			title	4P + 12S
				angles	.XXX±.0020/0.XXX±0.051			RIGHT ANGLE SOLDER HEADER	
				dr	T. BRUNGARD 09/10/02	INCH/MM		product family	PwrBlade
				enrg	M. MOSTOLLER 09/10/02			code	213
				chr	M. MOSTOLLER 09/10/02	scale		size	dwg no
				appd	M. MOSTOLLER 09/10/02	1:1		A	51732-002
sheet index	revision sheet							sheet	4 of 4

1 | 2

Pro/E

3 |

coge code 22526

4