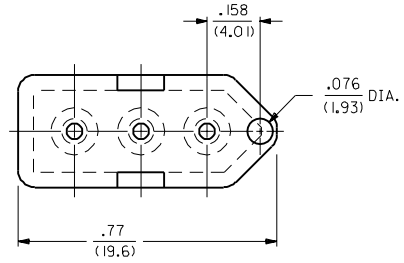
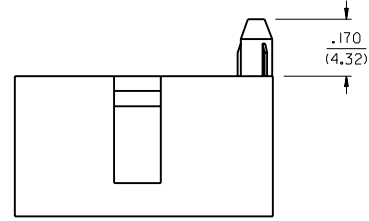
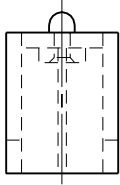
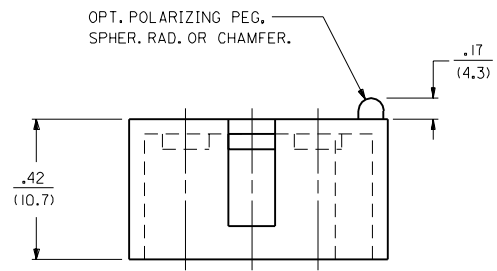


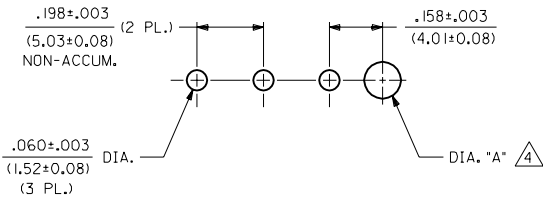
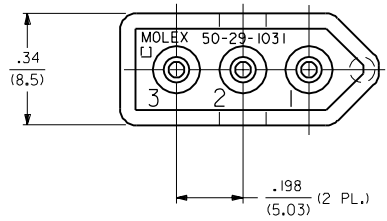
PART NO.	ENG. NO.	PEG TYPE	DIA. "A"
50-29-1031	3099-3A1	POLARIZING	.100±.005 (2.54±0.13)
97-00-0151	3099-3B1	NONE	
50-30-2036	3099-3A2	LOCKING	.103 ±.003/-0.002 (2.62 ±0.08/-0.05)



- NOTES:
- THIS HOUSING FOR USE WITH STANDARD .093/(2.36) SERIES RECEPTACLES.
 - MATERIAL:
I- UNFILLED POLYESTER, 94V-0, COLOR-BLACK
 - THIS HOUSING ACCEPTS I840, 43080 OR 43631 SERIES PIN AND SOCKET TERMINALS.
 - △** ONLY REQUIRED WHEN USING PARTS WITH OPTIONAL POLARIZING OR LOCKING PEG.
 - PARTS TO BE MOUNTED ON SUPPORTED EDGE OF P.C. BOARD.



VIEW OF HOUSING SHOWING OPTIONAL LOCKING PEG



RECOMMENDED P.C. BOARD HOLE PATTERN

G2	FINAL REL. - 3a2 ECN #117 0227 9-9-96 RW
G1	REVISE PER ECR U6 0630 GC 11/27/95 RW
G	CHG. COLOR TO BLK ECN #14 0193 2-24-94 RW
F	MAT'L WAS GLASS FIL'D. ECR U3 1669 GC 11/10/93 RW
E	DEL MAT'L OPT. 2 ECR U2-1469 AFG 92-10-09 RW
D	REVISE V-O MAT'L. ECR U2 0079 1/17/92 RW
C	REV PER DETAIL ECR U90347 KBW 08-30-89 RW
B	REVISED PER ECR U90347 GEP 5-25-89 RW
A	REV. WITH EDP'S ECR U8 2300 GEP 1-25-89 RW

DIMENSIONS SHOWN METRIC (INCH)		UNLESS OTHERWISE SPECIFIED TOLERANCES: ANGULAR ± .04°		MFG. SH. REV. LTR. REVISIONS	
3 PLACE	± .010	---	---	TITLE	
2 PLACE	± .014	± 0.25	---	3 CKT. HOUSING, ENCLOSED HEADER, .198/(5.03) CENTERS	
1 PLACE	---	± 0.35	---	PART NO. DATE	
DRAFT WHERE APPLICABLE MUST REMAIN WITHIN DIMENSIONS				MOLEX INCORPORATED SHEET NO. 1 OF 1 DATE 1/25/89	
SEE CHART				DRWG. NO. SD-3099-3	
FILE NAME S30993X1.DWG				DIV. SIZE	