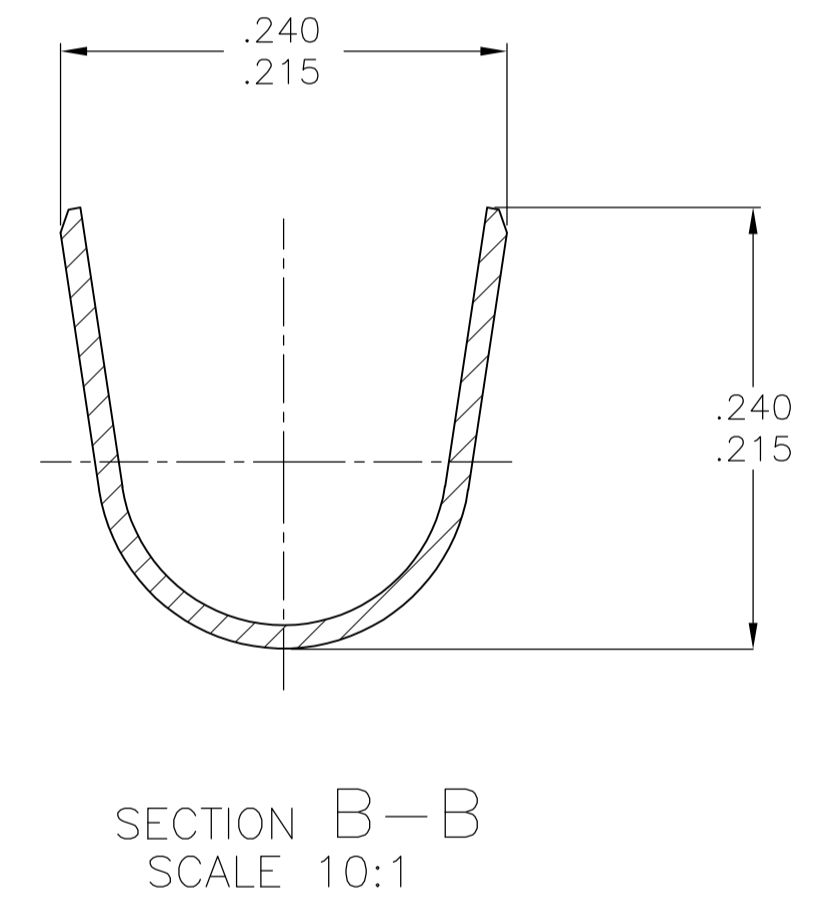
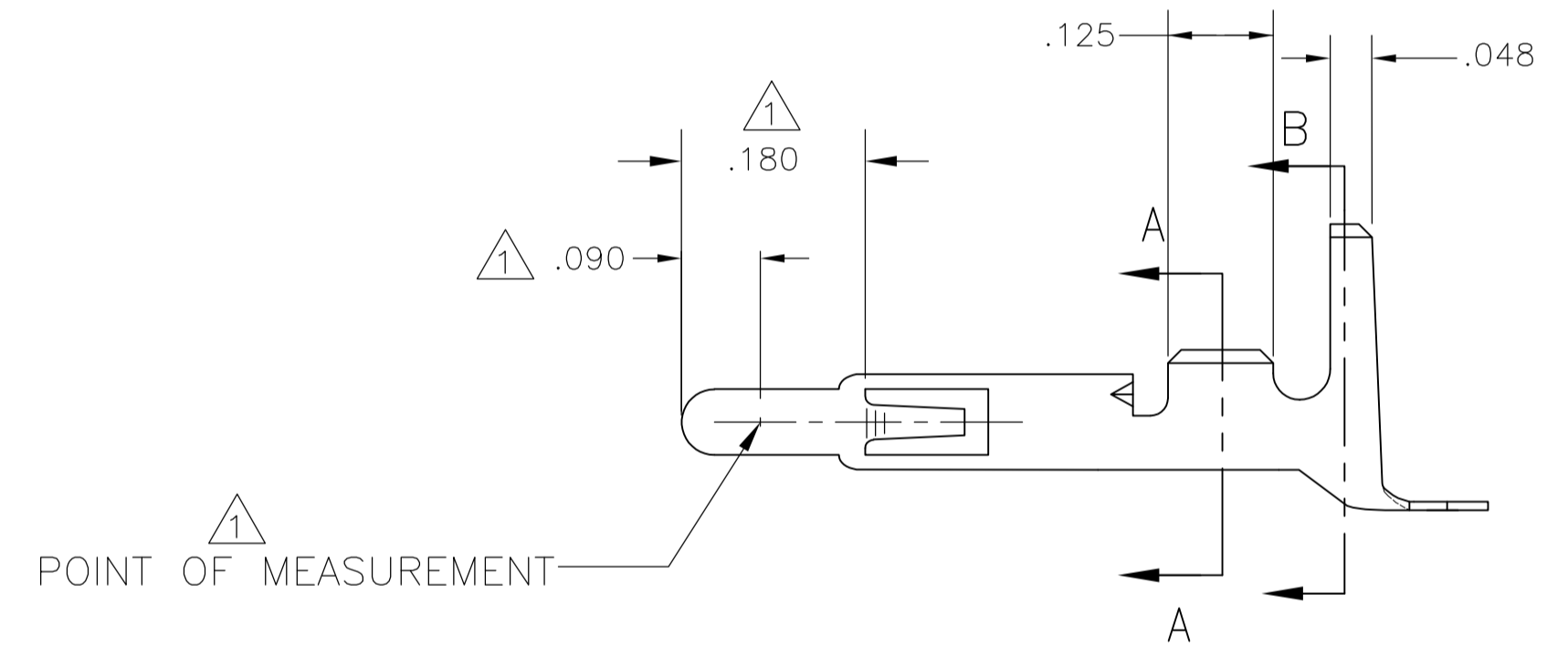
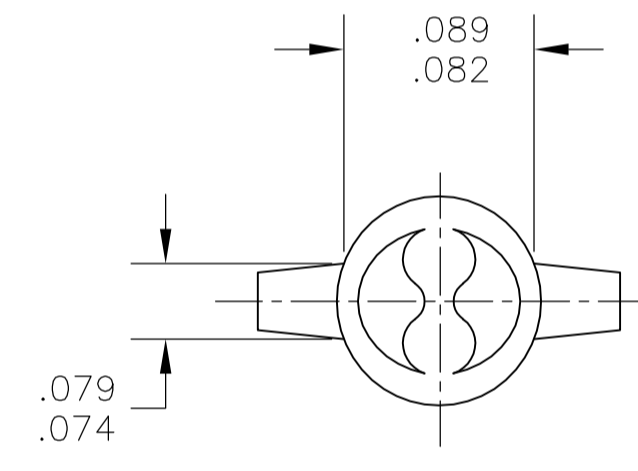
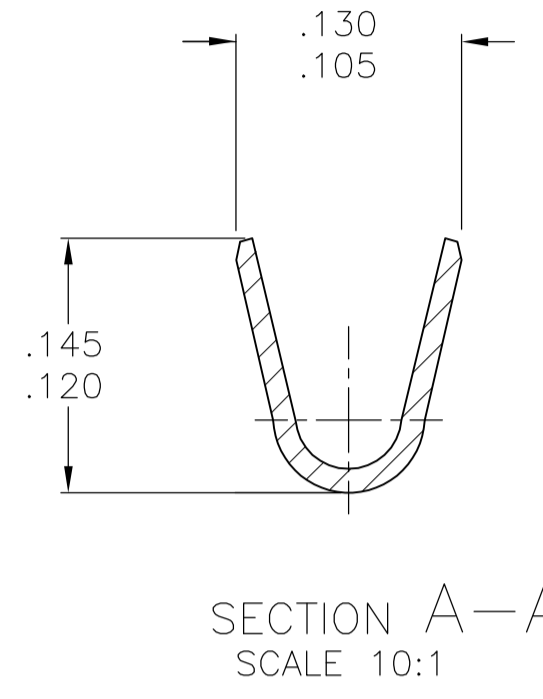
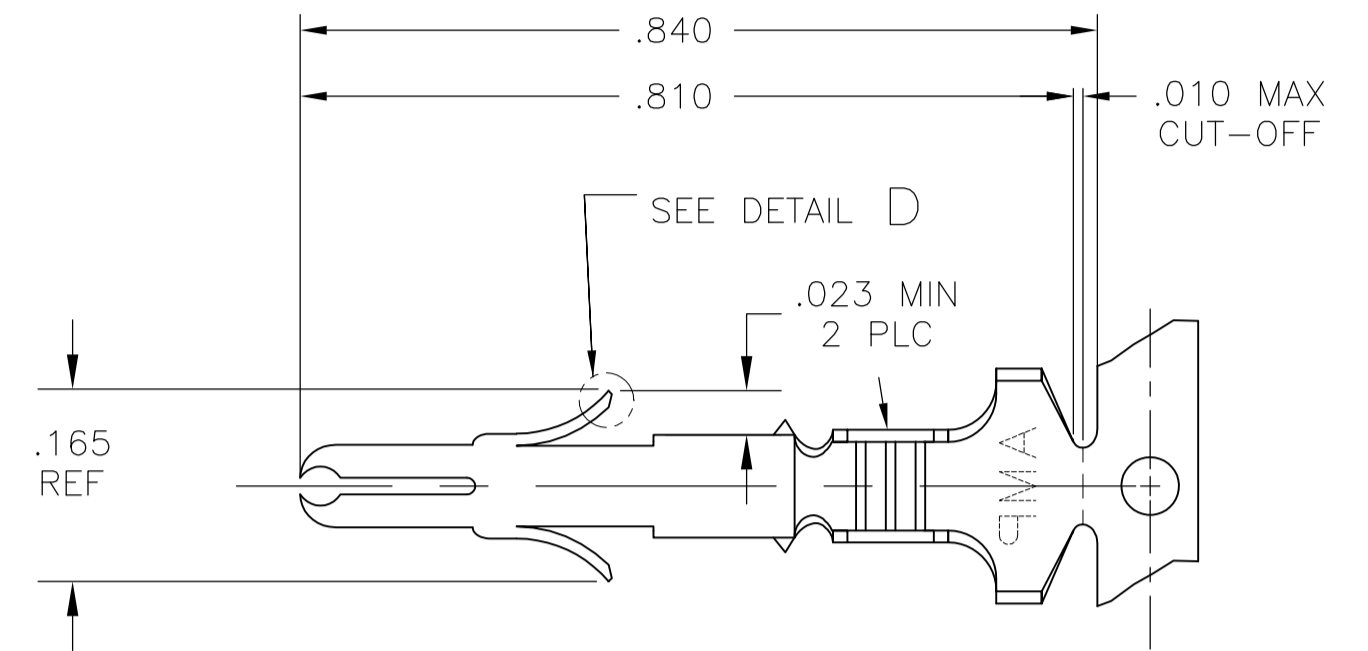
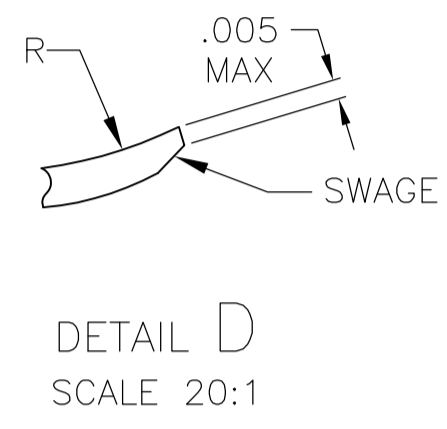


REVISIONS					
P	LTR	DESCRIPTION	DATE	DWN	APVD
Y2		REVISED PER ECR-16-006270	07MAY2016	BW	RS

- ① PLATED WITH .000030 GOLD, OVER .000050 NICKEL UNDERPLATE.
- ② GOLD OVER NICKEL ON ENTIRE STAMPING; .000030 GOLD MINIMUM AT POINT OF MEASUREMENT IN CONTACT AREA, GOLD FLASH MINIMUM IN WIRE BARREL.
- ③ INSULATION RANGE :  $\phi$ .130-.200



WIRE RANGE	MATERIAL	FINISH	PART NUMBER
350707-7	.012 BRASS	GOLD ①	350700-7
-	.012 PH BR2	PRE-TIN	350700-3
350707-2	.012 BRASS	GOLD ②	350700-2
350707-1		PRE-TIN	350700-1
LOOSE PIECE (REF)	MATERIAL	FINISH	PART NUMBER

THIS DRAWING IS A CONTROLLED DOCUMENT.

WIRE RANGE	20-14 AWG	INSULATION RANGE	③
DIMENSIONS: INCHES 		TOLERANCES UNLESS OTHERWISE SPECIFIED: 0 PLC ± - 1 PLC ± - 2 PLC ± - 3 PLC ± .015 4 PLC ± - ANGLES ± -	
MATERIAL		FINISH	

DSN: BASVESH WARAD 31MAR2016 CHK: WICKES, EVAN 31MAR2016 APVD: WICKES, EVAN 31MAR2016 PRODUCT SPEC: 108-1031 APPLICATION SPEC: 114-1010 WEIGHT: 0	NAME: SPLIT PIN, UNIVERSAL MATE-N-LOK SIZE: A1 CAGE CODE: 00779 DRAWING NO: C=350700 RESTRICTED TO: -
CUSTOMER DRAWING	SCALE: 5:1 SHEET 1 OF 1 REV Y2

STE TE Connectivity