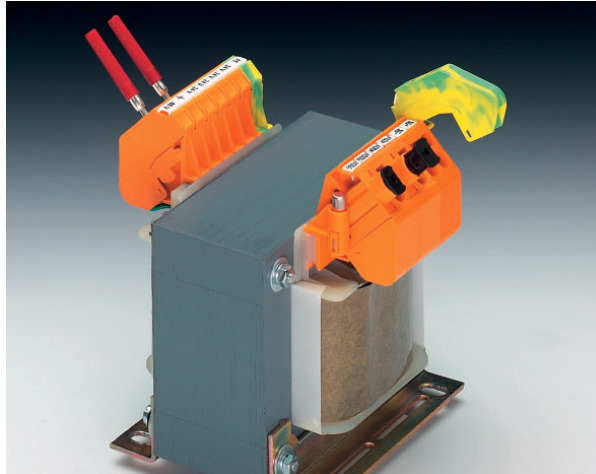


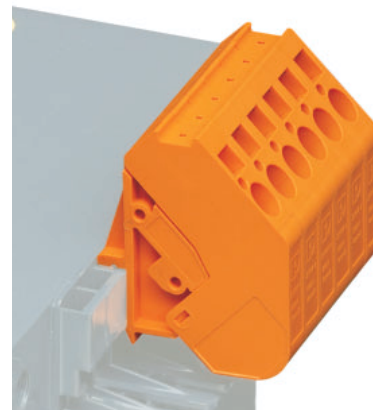
## Spring Cage Transformer Terminal Blocks

---

The ZTRK 4 terminal blocks with spring cage connection and SIH-TRK fuse holder were developed for direct mounting on coils with integrated mounting chambers and for snapping onto aluminum transformer rails 2 x 10 mm and 2 x 35 mm. The terminal block covers the cross section range up to 4 mm<sup>2</sup>. There is also a green-yellow version with the same shape, without metal contact on the mounting surface, and a fuse terminal block. A practical test connection is provided for the 2.3 mm Ø MPS test plug. The SIH-TRK fuse holder provides space for a 5 x 20 mm replacement fuse directly on the transformer.

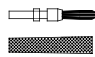
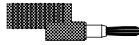
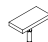
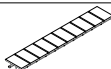


# Transformer Terminal Blocks with Spring Cage Connection ZTRK 4



(IEC) [mm <sup>2</sup> ]	rigid solid	flexible stranded	AWG	I [A]	U [V]
EN 60 947-7-1	0.2-4	0.2-4	24-10	32	630

## Technical data

<b>Spring cage transformer terminal block</b>	orange green-yellow
<b>Terminal block</b> , as above, however, 2-pos.	orange
<b>Terminal block</b> , as above, however, 3-pos.	orange
(1) <b>2.3 mm Ø test plug<sup>1)</sup></b> , consisting of a metal part and a red insulating sleeve	
(2) <b>Reducing plug</b> , for transition from 4 mm Ø test plug to 2.3 mm Ø test plug socket	
(3) <b>Marker pin, unprinted</b> : for individual labeling with M-PEN, lettering area: 7,5 x 4 mm	
(4) <b>Zack strip</b> , flat, 10-section, for individual labeling with M-PEN	

## Dimensions

### Technical data in accordance with IEC/ DIN VDE

Maximum load current/ cross section	[A] / [mm <sup>2</sup> ]
Rated surge voltage / contamination class	[kV] / -
Surge voltage category / insulation material group	- / -

### Capacity connection

Stranded with ferrule with plastic sleeve	[mm <sup>2</sup> ]
Stranded with ferrule without plastic sleeve	[mm <sup>2</sup> ]
Stranded with TWIN ferrule with plastic sleeve	[mm <sup>2</sup> ]

<b>Stripping length</b>	[mm]
-------------------------	------

### Internal cylindrical gauge (IEC 60 947-1)

<b>Insulating material</b>	
----------------------------	--

Inflammability class in acc. with UL 94

<b>Approval data (UL and CSA/CUL)</b>	
---------------------------------------	--

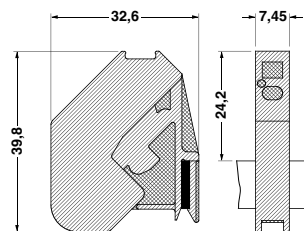
Nom. voltage / nom. current / conduc. sizes	UL: [V] / [A] / AWG
	CSA/CUL: [V] / [A] / AWG

<sup>1)</sup> Further colors are available on request.

Type	Order No.	Pcs. Pkt.
ZTRK 4 ZTRK 4-GNYE	30 29 30 5 30 29 44 4	50 50
ZTRK 4/2	30 26 93 9	50
ZTRK 4/3	30 26 94 2	50
MPS-IH RD	02 01 67 6	10
RPS	02 01 64 7	10
BN-TRK	27 01 40 4	100
ZBF 7,5: UNPRINTED	08 09 94 2	10

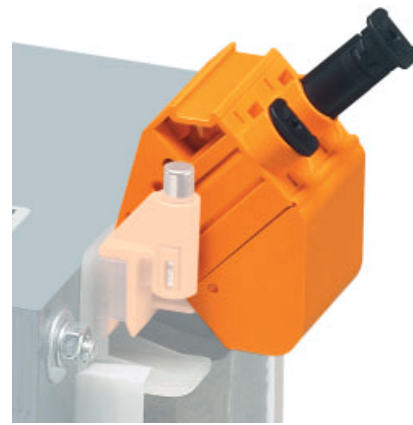
see dimensional drawing

	32 / 4
	6 / 3
	3 / III
	0.25 - 4
	0.25 - 4
	0.5 - 1
	12
	A 4
	PA
	V2
	600 / 30 / -
	600 / 30 / -



# Spring Cage Transformer Fuse Terminal Block

## ZTRK 4-SI



(IEC) [mm <sup>2</sup> ]	rigid solid	flexible stranded	AWG	I [A]	U [V]
EN 60 127-6	0.2-4	0.2-4	24-10	6.3*	250*

\* The current and voltage are determined by the fuse.

### Technical data

Spring cage transformer fuse terminal block	orange
(1) <b>2.3 mm Ø test plug<sup>1)</sup></b> , consisting of a metal part and a red insulating sleeve	
(2) <b>Reducing plug</b> , for transition from 4 mm Ø test plug to 2.3 mm Ø test plug socket	
(3) <b>Marker pin, unprinted</b> : for individual labeling with M-PEN, lettering area: 7,5 x 4 mm	
(4) <b>Zack strip</b> , flat, 10-section, for individual labeling with M-PEN	

### Dimensions

#### Technical data in accordance with IEC/ DIN VDE

Maximum load current/ cross section	[A] / [mm <sup>2</sup> ]
Rated surge voltage / contamination class	[kV] / -
Surge voltage category / insulation material group	- / -

#### Capacity connection

Stranded with ferrule with plastic sleeve	[mm <sup>2</sup> ]
Stranded with ferrule without plastic sleeve	[mm <sup>2</sup> ]
Stranded with TWIN ferrule with plastic sleeve	[mm <sup>2</sup> ]
<b>Stripping length</b>	[mm]

#### Internal cylindrical gauge (IEC 60 947-1)

#### Insulating material

Inflammability class in acc. with UL 94

#### Approval data (UL and CSA/CUL)

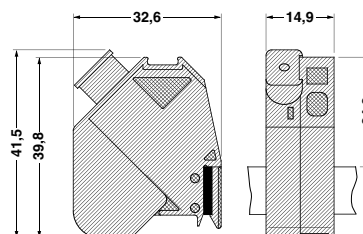
Nom. voltage / nom. current / conduc. sizes	UL: [V] / [A] / AWG
	CSA/CUL: [V] / [A] / AWG

Type	Order No.	Pcs. Pkt.
ZTRK 4-SI	30 29 43 1	50
MPS-IH RD	02 01 67 6	10
RPS	02 01 64 7	10
BN-TRK	27 01 40 4	100
ZBF 7,5: UNPRINTED	08 09 94 2	10

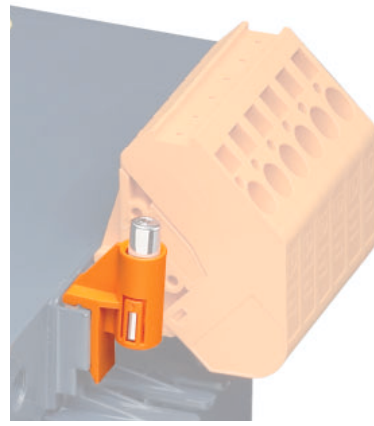
see dimensional drawing

	32 / 4
	6 / 3
	3 / III
	0.25 - 4
	0.25 - 4
	0.5 - 1
	12
	A 4
	PA
	V2
	600 / 30 / -
	600 / 30 / -

<sup>1)</sup> Further colors are available on request.



# Fuse Holder SIH-TRK



## Technical data

		Type	Order No.	Pcs. Pkt.
Fuse holder, for 5 x 20 mm cartridge fuse inserts	orange	SIH-TRK	07 11 43 8	50
<b>Technical data in accordance with IEC/ DIN VDE</b>				
Insulating material			PA	
Inflammability class in acc. with UL 94			V2	

