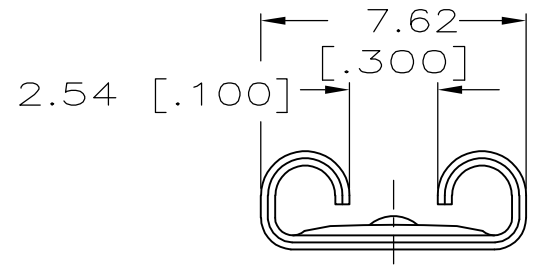
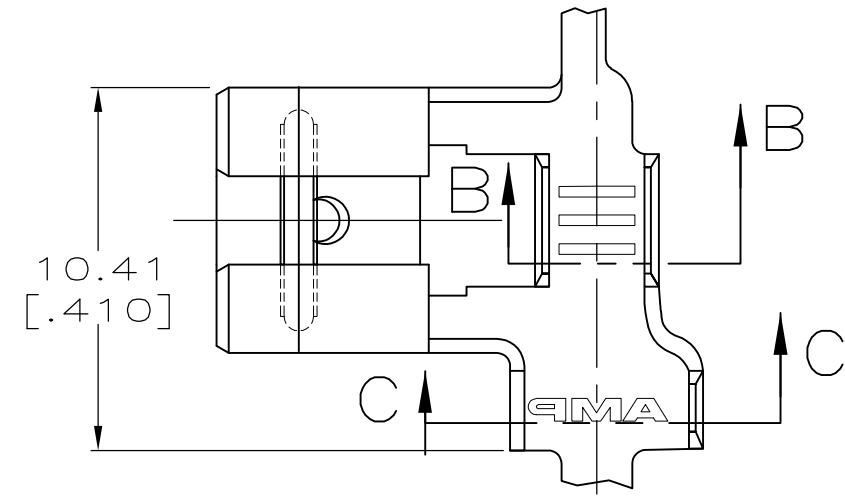
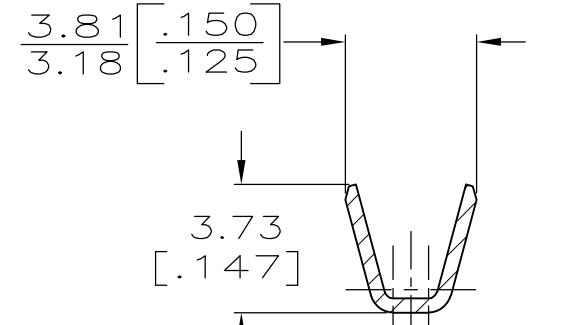
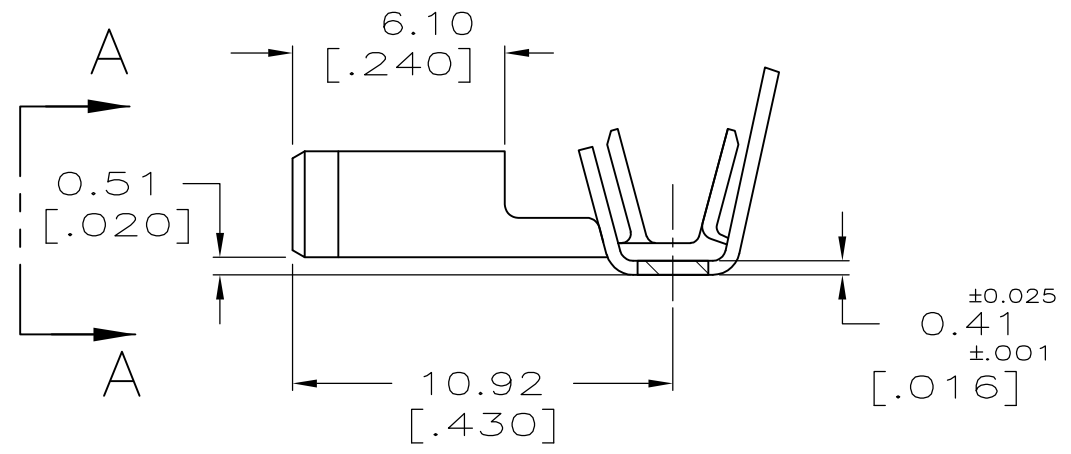


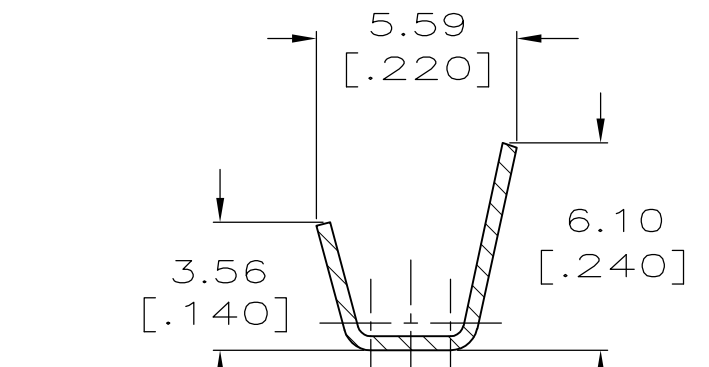
LOC		DIST		REVISIONS					
AF		50		P	LTR	DESCRIPTION	DATE	DWN	APVD
		J		REVISED PER ECR-12-013518			23NOV12	KH	PD



VIEW A-A



SECTION B-B



SECTION C-C

- 1 CONTINUOUS STRIP ON REELS.
- 2 MATING TAB THK IS 0.81±0.025 [.032±.001]
- 3 WIRE SIZE IS [#18-#14] AWG.
- 4 INSULATION RANGE IS 2.79-4.06 [.110-.160] DIA.
- △5 0.00381 [.000150] MIN TIN OVER 0.00254 [.000100] MIN COPPER.
- △6 PRELIMINARY - NOT FOR PRODUCTION

TIN OVER COPPER	△5	△6	63009-3
TIN			63009-2
-			63009-1
FINISH			PART NO

THIS DRAWING IS A CONTROLLED DOCUMENT.		DWN	JR RUTH	4/9/91	STE TE Connectivity									
DIMENSIONS: mm [INCHES]		CHK	MS FEHER	4/9/91										
TOLERANCES UNLESS OTHERWISE SPECIFIED:		APVD	C MEYERS	4/9/91										
<table border="0"> <tr><td>0 PLC</td><td>± -</td></tr> <tr><td>1 PLC</td><td>± -</td></tr> <tr><td>2 PLC</td><td>± -</td></tr> <tr><td>3 PLC</td><td>± 0.38 [.015]</td></tr> <tr><td>4 PLC ANGLES</td><td>± -</td></tr> </table>		0 PLC	± -	1 PLC		± -	2 PLC	± -	3 PLC	± 0.38 [.015]	4 PLC ANGLES	± -	PRODUCT SPEC	NAME
0 PLC	± -													
1 PLC	± -													
2 PLC	± -													
3 PLC	± 0.38 [.015]													
4 PLC ANGLES	± -													
MATERIAL	BRASS	FINISH	SEE TABLE	WEIGHT	-									
APPLICATION SPEC		RECEPTACLE, FASTON, FLAG, 6.35 [.250] SERIES		SIZE	A3									
CUSTOMER DRAWING		CAGE CODE	00779	DRAWING NO	C-63009									
SCALE		5:1	SHEET	1 OF 1	REV									
					J									