

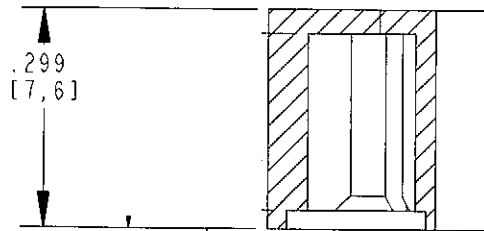
ENG112D

DWG. NO. 38HH2041-X

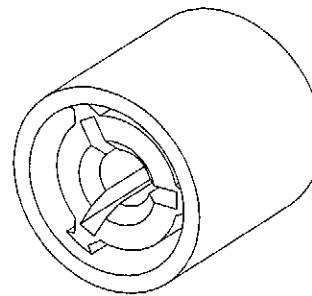
PART NUMBER COLOR SELECTION

EXAMPLE: 38HH2041-2

<u>MODEL #</u>	<u>COLOR</u>
38HH2041-	1 = WHITE
	2 = BLACK
	3 = RED
	4 = ORANGE
	5 = YELLOW
	6 = GREEN
	7 = BLUE
	8 = BROWN
	9 = GRAY



NOTES:
 1. CAPS FIT SUB-MINIATURE PUSHBUTTON SWITCHES GRAYHILL SERIES 38C,



ALL DIMENSIONS ARE FOR REFERENCE ONLY.

REVISIONS	
<i>Grayhill</i>	
GRAYHILL, INC. 561 HILLGROVE AVE. LA GRANGE, IL 60525 PHONE (708) 354-1040	
UNLESS OTHERWISE SPECIFIED TOLERANCES AND DIMENSIONS ARE IN INCHES LINEAR ± REF. DIAMETERS ± REF. ANGULAR ± REF. LIMITS APPLY BEFORE FINISHING DO NOT SCALE THIS PRINT	
CRITICAL CHARACTERISTIC FLAGS PER GRAYHILL SPEC. SOP2338	
	-- CRITICAL CHARACTERISTIC FLAG
	-- Cpk REQUIRED
	-- S.P.C. FLAG (CONTROL CHART REQ'D ON FEATURE SPECIFIED)
FINISH NONE	APPROVED DATE PR 10-23-06
MATERIAL NYLON	CHECKED DATE CWS 10-23-06
NAME BUTTON CAP	DRAWN DATE CMC 10-23-06
CAGE NO. 81073	38HH2041-X
A SIZE	DWG. NO. 38HH2041-X
	ISSUE A
SCALE 4.000	SHEET 1 OF 1