

ATLANTIC VERSION TERMINATOR INTERFACE ADAPTER	PART NUMBER	REVISION	DESCRIPTION	FEED TYPE	APPLICATOR STYLE CONVERSION CHART						
					CONVERT TO	PART NUMBERS REQUIRED					
	2150381-1	B	FINE CRIMP HEIGHT ADJUST	MECHANICAL	PNEUMATIC FEED	2119950-1	2119792-2	-	2119641-1	-	2063440-1
					SERVO LATCH PLATE	2119951-1	1901697-1	8-2150381-5	-	-	2168400-7 (QUANTITY 2)
					SMART APPLICATOR	2161326-1	-	8-2150381-4	-	-	-
	2150381-2	B	FINE CRIMP HEIGHT ADJUST	PNEUMATIC	MECHANICAL FEED	2119949-1	2063961-1	5-18022-5	2119653-1	-	-
					SERVO LATCH PLATE	2119951-1	1901697-1	8-2150381-5	-	-	2168400-7 (QUANTITY 2)
					SMART APPLICATOR	2161326-1	-	8-2150381-4	-	-	-
	2150381-5	B	FINE CRIMP HEIGHT ADJUST	SERVO LATCH PLATE	MECHANICAL FEED	2119949-1	2063961-1	5-18022-5	2119653-1	-	-
PNEUMATIC FEED					2119950-1	2119792-2	-	2119641-1	-	2063440-1	
2150381-6	B	NON-CRIMP HEIGHT ADJUST	SERVO LATCH PLATE	-	-	-	-	-	-	-	
2150381-7	B	FINE CRIMP HEIGHT ADJUST	NONE	-	-	-	-	-	-	-	
7-2150381-7	A	CRIMP TOOLING KIT	-	-	-	-	-	-	-	-	

APPLICATOR DATA		
CRIMP	SIZE	TYPE
WIRE	3.05 mm [.120]	F
INSUL	3.56 mm [.140]	O
APPL INSTRUCTIONS 408-10390		

TERMINAL DATA: TE TERMINAL		TE CRIMP SPECIFICATION	
TERMINAL NAME: RING			
WIRE STRIP LENGTH		INSULATION DIAMETER RANGE	
2.79-3.56 mm [.110-.140 IN]		Ø1.91-2.79 mm [.075-.110 IN]	
TERMINAL APPLICATION SPECIFICATION	114-2084	-	-
TERMINALS APPLIED			
TE TERMINAL	TE TERMINAL	TE TERMINAL	TE TERMINAL
160344-1	160344-2	41406	41406-1
42065	42721-1	63514-1	

WIRE SIZE	CRIMP HEIGHT mm [INCH]	CRIMP HEIGHT REFERENCE SETTING
16 AWG	1.63 +/- 0.05 [0.064 +/- .002]	6.3
18 AWG	1.50 +/- 0.05 [0.059 +/- .002]	7.7
20 AWG	1.45 +/- 0.05 [0.057 +/- .002]	8.2

- RECOMMENDED SPARE PARTS
- GREASE BEARING SURFACES LIGHTLY
- 3. LUBRICATE DAILY PER THE APPLICATOR INSTRUCTION SHEET SUPPLIED WITH THE APPLICATOR.
- APPLICATOR SPECIFIC DATA TO BE ENTERED INTO BLANK MEMORY CHIP AT ASSEMBLY. SEE BELOW FOR PART NUMBER:
 - MECHANICAL FEED WITH "SMART APPLICATOR" CONVERSION: 8-2150381-4
 - PNEUMATIC FEED WITH "SMART APPLICATOR" CONVERSION: 8-2150381-4
 - SERVO FEED WITH "FINE CRIMP HEIGHT ADJUST": 8-2150381-5
 - SERVO FEED WITH "NON-CRIMP HEIGHT ADJUST": 8-2150381-6
- ADJUSTMENT OF THE STRIPPER MAY BE REQUIRED WHEN MOVING THE APPLICATOR BETWEEN BENCH AND LEADMAKER APPLICATIONS.
- APPLY PART NUMBER 1-23419-5 LOCTITE TO THREADS OF ITEM 62. APPLY PART NUMBER 2-23419-6 LOCTITE TO THREADS OF ITEM 242. FOR -6 ONLY APPLY PART NUMBER 1-23419-5 LOCTITE TO THREADS OF ITEM 37.
- GREASE THREADS, GROOVE AND O-RING ON ITEMS 35 & 252.
- MAGNET, ITEM 166 MUST BE ORIENTED CORRECTLY IN ORDER TO PROPERLY ACTUATE THE COUNTER.
- CRIMP HEIGHT REFERENCE SETTING WAS THE SETTING USED WHEN THE APPLICATOR WAS QUALIFIED AT THE FACTORY. ADJUSTMENT MAY BE NECESSARY WHEN RUNNING APPLICATOR IN THE FIELD.
- SPARE FEED CAM STORAGE LOCATION REFER TO INSTRUCTION SHEET FOR ADDITIONAL INFORMATION.
- THE RECOMMENDED SET-UP FOR END FEED APPLICATORS IS POST-FEED WITH ITEM 2119653-1. THE APPLICATOR CAN BE CONFIGURED FOR PRE-FEED WITH ITEM 2119652-1 BUT MAY ENCOUNTER PROBLEMS WITH SOME APPLICATIONS. FEED ISSUES OR TERMINAL JAMMING MAY OCCUR IN THE PRE-FEED CONFIGURATION.
- WHEN ASSEMBLING -6 NON-CRIMP HEIGHT ADJUST APPLICATOR USE SHIM PACK 2119957-2 TO ALIGN APPLICATOR'S MAXIMUM WIRE CRIMP HEIGHT AT NORMAL TERMINATOR SHUT HEIGHT
- WIRE BARREL SEAM DOES NOT FULLY CLOSE ON 16 AWG WIRE SIZE. THEREFORE USE OF THIS WIRE SIZE IS NOT RECOMMENDED BY A.T. HOWEVER, IS APPROVED BY TERMINAL PRODUCT ENGINEER.
- TERMINAL LUBRICANT IS RECOMMENDED.

***WARNING**
ON INSTALLATION, SET WIRE DISC, ITEM 40 TO LARGEST WIRE SIZE SETTING. USE OF SETTINGS BELOW MINIMUM REQUIRED CRIMP HEIGHT SETTING WILL CAUSE DAMAGE TO CRIMP TOOLING.

ATLANTIC VERSION
Shown on sheets 1 of 4 & 2 of 4
(Pacific version shown on sheets 3 of 4 & 4 of 4)

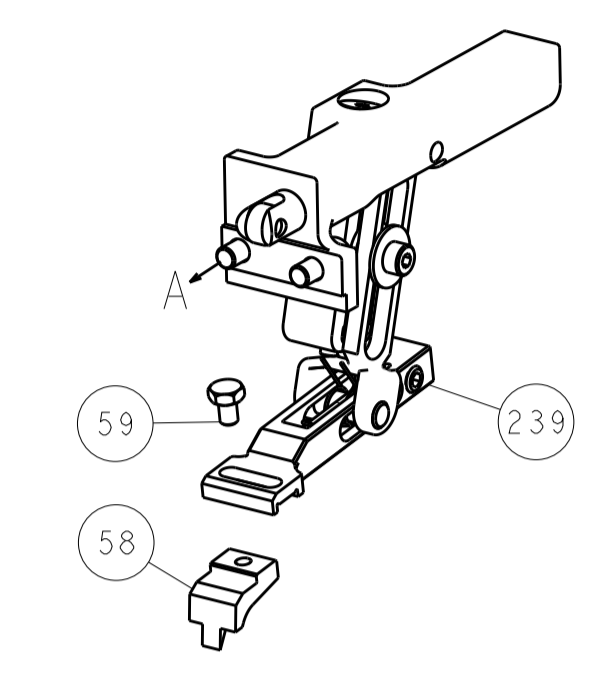
SET UP GAUGE	LOC	DIST	REVISIONS			
2119599-2	A	66	REV	DATE	OWN	APVD
			A	RELEASED	15NOV2013	LG TE
			B	ECR-17-002055	17FEB2017	TB TE

REV	DATE	OWN	APVD	DESCRIPTION	ITEM NO		
-	-	-	-	2119957-2	APPLICATOR SHIM PACK	260	
-	-	-	-	8-21084-0	O-RING, .676 ID, .070 DIA. MAT.	252	
-	-	-	-	2119640-1	PUSH ROD, AIR FEED	250	
-	-	-	-	1803259-1	BUSHING, FLANGED	249	
-	-	-	-	2119641-1	FEED CAM, AIR FEED	248	
-	-	-	-	2119798-1	DETENT PIN	247	
-	-	-	-	1-22279-3	SPRING, COMPRESSION	246	
-	-	-	-	2119759-1	RAM, AMP STYLE, END FEED, NON-ADJUST	245	
-	-	-	-	2119082-9	CAM, SNAIL, INSULATION ADJUSTMENT	244	
-	-	-	-	2079764-1	WASHER, WAVE SPRING, CREST-TO-CREST	243	
-	-	-	-	2119083-1	RETAINER, INSULATION DIAL	242	
-	-	-	-	2168400-7	SHCS, LOW HEAD, RoHS, M5 X 10	240	
-	-	-	-	2119580-1	MECHANICAL FEED ASSEMBLY	239	
-	-	-	-	2063440-1	AIR FEED MODULE	238	
-	-	-	-	2119740-2	TAG, IDENTIFICATION	213	
-	-	-	-	REFREF	1901697-1	FEED FINGER ASSEMBLY, EF	183
-	-	-	-	21045-3	RING, RETAIN, EXTERN, 3/16 CRESCENT	172	
-	-	-	-	994969-1	MAGNET, RARE EARTH HIGH ENERGY	166	
-	-	-	-	REFREFREFREFREF	994970-2	COUNTER, MAGNETIC	164
-	-	-	-	240638-1	SPRING, FEED FINGER	163	
-	-	-	-	3-23627-7	PIN, RETAIN, GRVD, 3/16 X .854	137	
-	-	-	-	REFREF	SEE NOTE 4	MEMORY CHIP, PROGRAMMED	135
-	-	-	-	1633743-1	SERVO FEED LATCH ASM	133	
-	-	-	-	2119955-2	ASSY, LUBRICATOR, END FEED	84	
-	-	-	-	455888-4	SPACER, CRIMPER	82	
-	-	-	-	2119956-2	DOCUMENTATION PACKAGE	71	
-	-	-	-	2-18032-2	SCR, SET, FLT POINT M3 X 10.0	70	
-	-	-	-	2119740-1	TAG, IDENTIFICATION	67	
-	-	-	-	2168078-1	SCREW, DRIVE, RH, RoHS, 2 x .188	66	
-	-	-	-	2119793-1	LIMITER, ADJUSTMENT BOLT	63	
-	-	-	-	992763-5	SCR, SET, SOC, CONE POINT, M3 X 4.0	62	
-	-	-	-	2079383-4	SCR, BHSC, RoHS (M4 X 8)	60	
-	-	-	-	5-18022-5	SCR, HEX HD CAP, M4 X 6.0	59	
-	-	-	-	2063961-1	FEED FINGER	58	
-	-	-	-	2168400-4	SHCS, LOW HEAD, RoHS, M4 X 8	57	
-	-	-	-	1-2168083-4	SCR, SKT HD CAP, RoHS, M4 X 5	56	
-	-	-	-	5018030-2	NUT, HEX, REG, RoHS, M4	55	
-	-	-	-	5018030-1	NUT, HEX, REG, RoHS, M3	54	
-	-	-	-	986965-8	NUT, LOCK, HEX, TORQUE (M4)	53	
-	-	-	-	2119792-2	PAWL, EF, AIR	51	
-	-	-	-	18023-9	SCR, SKT HD CAP M4 X 6.0	49	
-	-	-	-	2119652-1	FEED CAM, PRE FEED	48	
-	-	-	-	2119653-1	FEED CAM, POST FEED	47	
-	-	-	-	2119655-5	APPLICATOR BASIC ASSEMBLY, EF	46	
-	-	-	-	2119369-1	RAM, AMP STYLE, END FEED	44	
-	-	-	-	2079383-7	SCR, BHSC, RoHS (M8 X 25)	41	
-	-	-	-	2119645-1	DISC, NUMBERED FA WIRE ADJUSTMENT	40	
-	-	-	-	2119957-1	APPLICATOR SHIM PACK	39	
-	-	-	-	1-2119644-2	RAM WASHER, PRECISION	38	
-	-	-	-	2119085-1	FA HEAD, ATLANTIC STYLE	37	
-	-	-	-	2119092-1	BOLT, ADJUSTMENT	35	
-	-	-	-	1-18028-2	WASHER, FLAT, REG M4	33	
-	-	-	-	2168083-9	SCR, SKT HD CAP, RoHS, M4 X 20	31	
-	-	-	-	1-2168083-0	SCR, SKT HD CAP, RoHS, M4 X 10	29	
-	-	-	-	240639-1	STRIPPER (MACHINING)	27	
-	-	-	-	1320906-1	STUD, THREADED	25	
-	-	-	-	1752371-1	PLATE, STRIP GUIDE	24	
-	-	-	-	2-22281-3	SPRING, COMPRESSION	22	
-	-	-	-	1752373-4	DRAG	20	
-	-	-	-	1901696-9	STRIP GUIDE, REAR	19	
-	-	-	-	1901695-9	STRIP GUIDE, FRONT	18	
-	-	-	-	1-2079383-1	SCR, BHSC, RoHS (M6 X 12)	17	
-	-	-	-	240644-1	PLATE, REAR SHEAR	11	
-	-	-	-	-	-	10	
-	-	-	-	690482-1	PLATE, FRONT SHEAR	9	
-	-	-	-	2-1333220-4	ANVIL, COMBINATION, .120	8	
-	-	-	-	2217206-1	BLADE, SLUG	7	
-	-	-	-	-	-	6	
-	-	-	-	1-240641-7	SPACER	5	
-	-	-	-	1-238009-1	BLOCK, FL CRIMPER SPACER	4	
-	-	-	-	1633965-9	CRIMPER, INSULATION O PREMIUM	3	
-	-	-	-	455888-4	SPACER, CRIMPER	2	
-	-	-	-	456409-2	CRIMPER, WIRE .120 "F" PREMIUM	1	

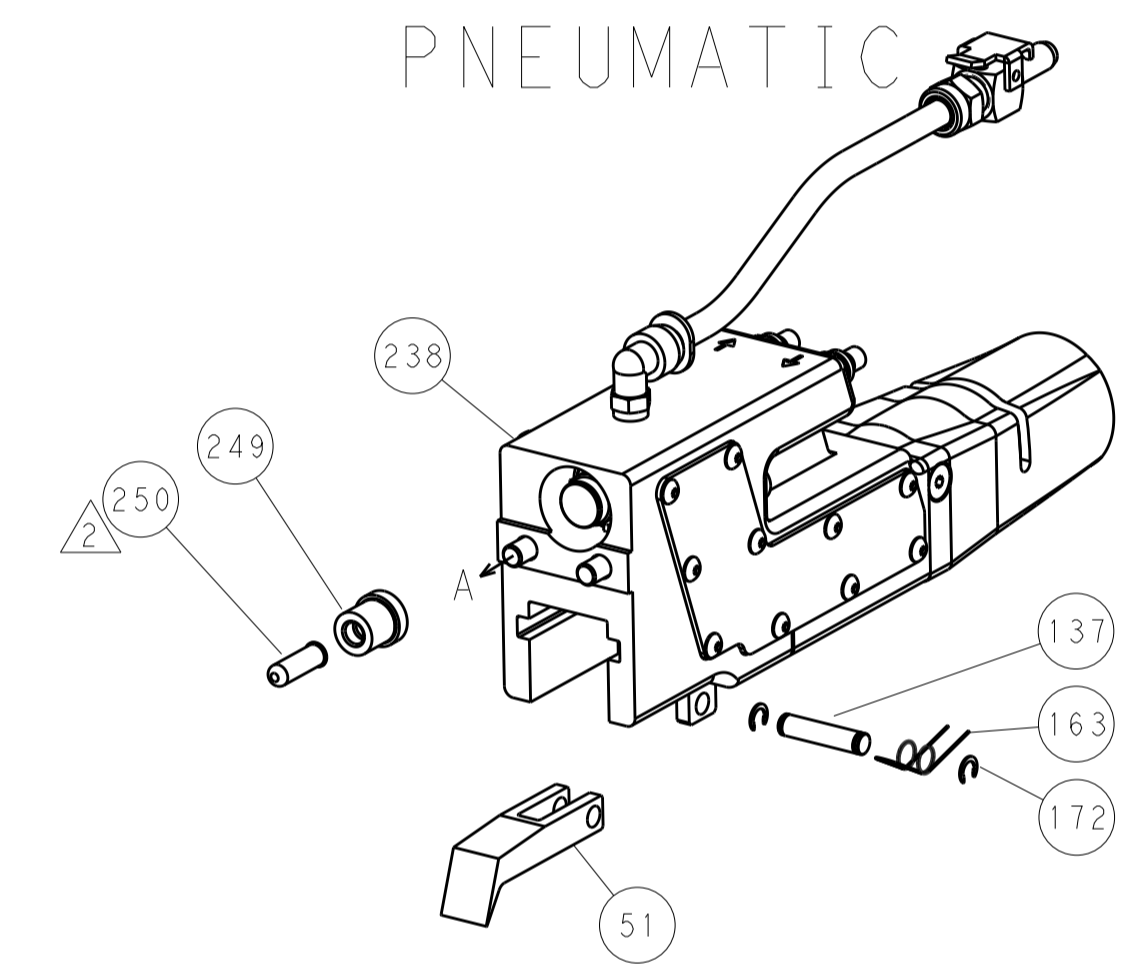
DIMENSIONS:		TOLERANCES UNLESS OTHERWISE SPECIFIED:		MATERIAL:		FINISH:		WEIGHT:		SCALE:	
mm	0 PLC	±									
	1 PLC	±									
	2 PLC	±									
	3 PLC	±									
	4 PLC	±									
	ANGLES	±									

LOC		DIST		REVISIONS			
A	66	P	LTM	DESCRIPTION	DATE	OWN	APVD
		-	-	SEE SHEET 1	-	-	-

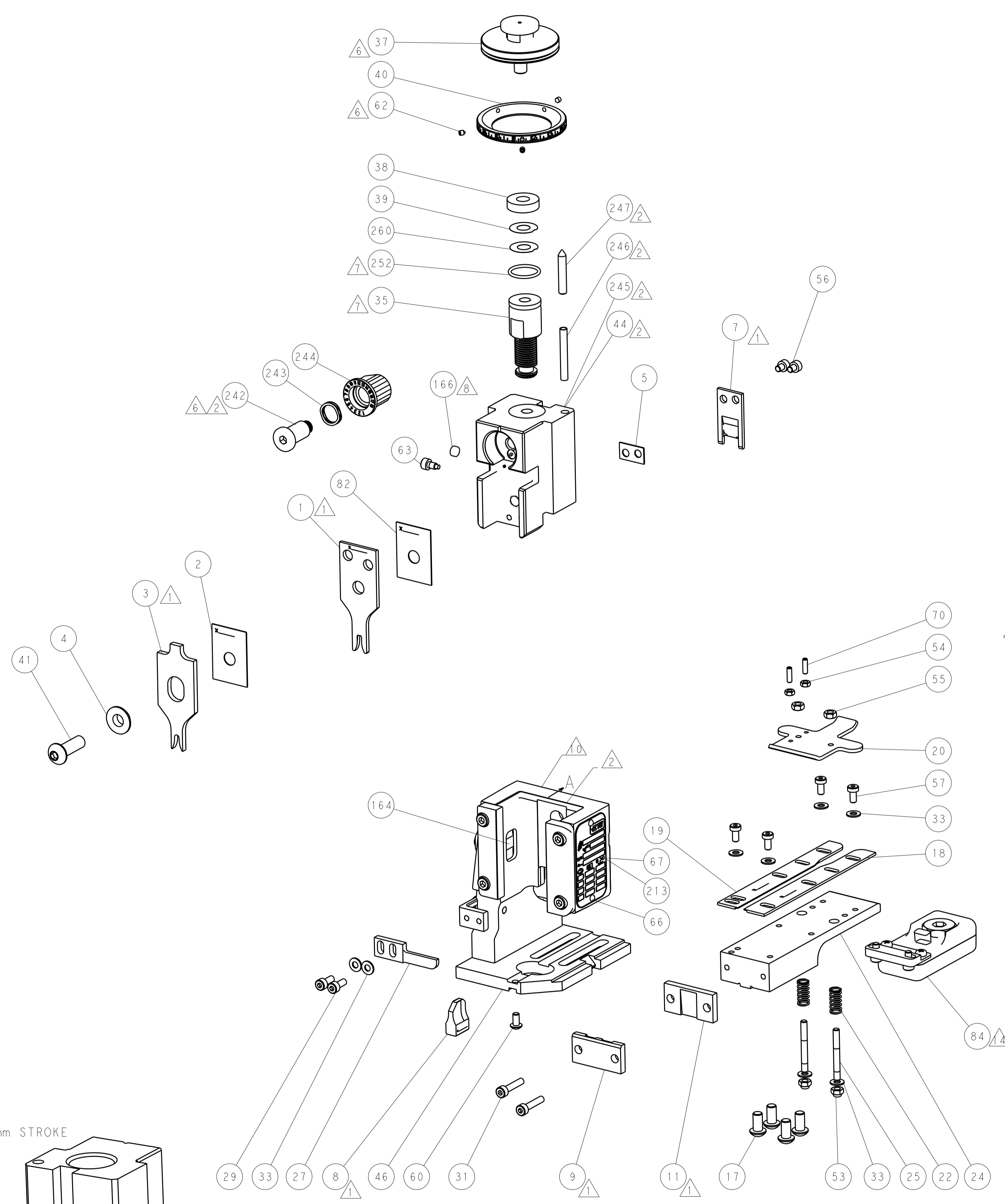
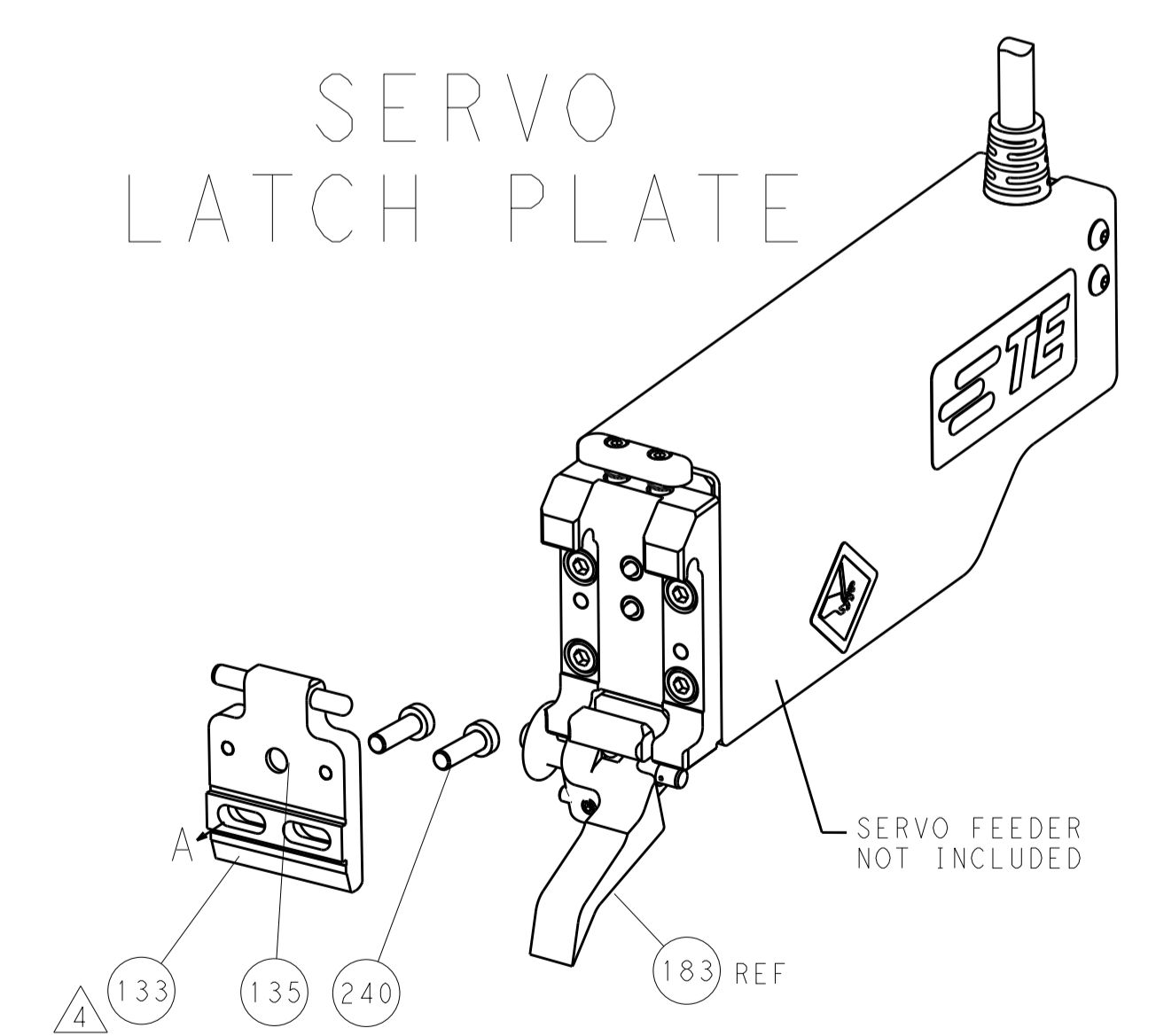
FEED TYPE MECHANICAL



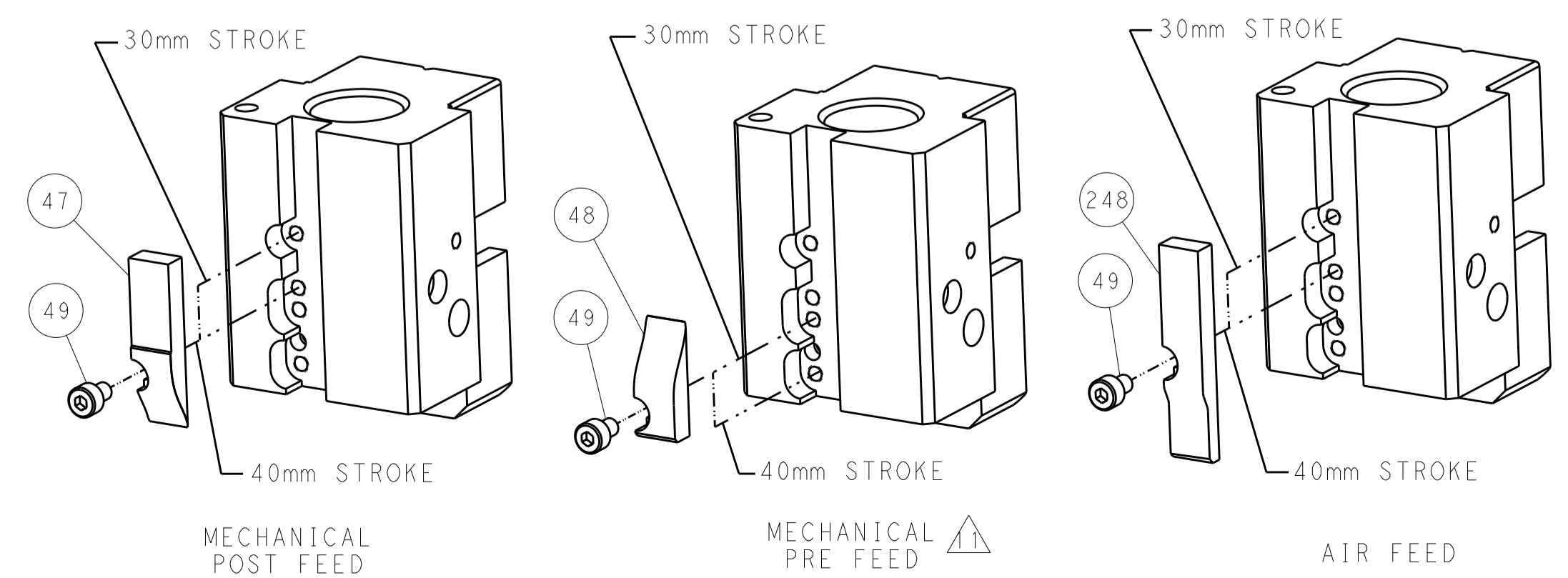
PNEUMATIC



SERVO LATCH PLATE



CAM POSITIONS



ATLANTIC VERSION
 Shown on sheets 1 of 4 & 2 of 4
 (Pacific version shown on sheets 3 of 4 & 4 of 4)

DIMENSIONS:		TOLERANCES UNLESS OTHERWISE SPECIFIED:		DWN		TE Connectivity	
mm	0 PLC	±		LL_GROSS	14OCT2013	Harrisburg, PA 17105-3608	
	1 PLC	±		CHK	G.BAILEY	NAME	
	2 PLC	±		APVD	M.C.LIFFORD	Ocean End Feed	
	3 PLC	±		PRODUCT SPEC		Applicator	
	4 PLC	±		APPLICATION SPEC		SIZE	
	ANGLES	±		WEIGHT		CAGE CODE	
MATERIAL	FINISH			A11 00779		DRAWING NO	
				Customer Accessible Production Drawing		RESTRICTED TO	
				SCALE		SHEET 2 OF 4	
				1:1		REV B	

PACIFIC VERSION TERMINATOR INTERFACE ADAPTER	PART NUMBER	REVISION	DESCRIPTION	FEED TYPE	APPLICATOR STYLE CONVERSION CHART						
					CONVERT TO	PART NUMBERS REQUIRED					
	2-2150381-1	B	FINE CRIMP HEIGHT ADJUST	MECHANICAL	PNEUMATIC FEED	2119950-1	2119792-2	-	2119641-2	-	2063440-1
					SERVO LATCH PLATE	2119951-1	1901697-1	8-2150381-5	-	-	2168400-7 (QUANTITY 2)
					SMART APPLICATOR	2161326-1	-	8-2150381-4	-	-	-
	2-2150381-2	B	FINE CRIMP HEIGHT ADJUST	PNEUMATIC	MECHANICAL FEED	2119949-1	2063961-1	5-18022-5	2119653-2	-	-
					SERVO LATCH PLATE	2119951-1	1901697-1	8-2150381-5	-	-	2168400-7 (QUANTITY 2)
					SMART APPLICATOR	2161326-1	-	8-2150381-4	-	-	-
	2-2150381-5	B	FINE CRIMP HEIGHT ADJUST	SERVO LATCH PLATE	MECHANICAL FEED	2119949-1	2063961-1	5-18022-5	2119653-2	-	-
					PNEUMATIC FEED	2119950-1	2119792-2	-	2119641-2	-	2063440-1
	2-2150381-7	B	FINE CRIMP HEIGHT ADJUST	NONE	-	-	-	-	-	-	-
	7-2150381-7	A	CRIMP TOOLING KIT	-	-	-	-	-	-	-	-

APPLICATOR DATA		
CRIMP	SIZE	TYPE
WIRE	3.05 mm [.120]	F
INSUL	3.56 mm [.140]	O
APPL INSTRUCTIONS 408-10390		

TERMINAL DATA: TE TERMINAL		TE CRIMP SPECIFICATION	
TERMINAL NAME: RING			
WIRE STRIP LENGTH		INSULATION DIAMETER RANGE	
2.79-3.56 mm [.110-.140 IN]		Ø1.91-2.79 mm [.075-.110 IN]	
TERMINAL APPLICATION SPECIFICATION	114-2084	-	-
TERMINALS APPLIED			
TE TERMINAL	TE TERMINAL	TE TERMINAL	TE TERMINAL
160344-1	160344-2	41406	41406-1
42065	42721-1	63514-1	

WIRE SIZE	CRIMP HEIGHT mm [INCH]	CRIMP HEIGHT REFERENCE SETTING
16 AWG	1.63 +/- 0.05 [.064 +/- .002]	6.3
18 AWG	1.50 +/- 0.05 [.059 +/- .002]	7.7
20 AWG	1.45 +/- 0.05 [.057 +/- .002]	8.2

- RECOMMENDED SPARE PARTS
- GREASE BEARING SURFACES LIGHTLY
- LUBRICATE DAILY PER THE APPLICATOR INSTRUCTION SHEET SUPPLIED WITH THE APPLICATOR.
- APPLICATOR SPECIFIC DATA TO BE ENTERED INTO BLANK MEMORY CHIP AT ASSEMBLY. SEE BELOW FOR PART NUMBER:
 MECHANICAL FEED WITH "SMART APPLICATOR" CONVERSION: 8-2150381-4
 PNEUMATIC FEED WITH "SMART APPLICATOR" CONVERSION: 8-2150381-4
 SERVO FEED WITH "FINE CRIMP HEIGHT ADJUST": 8-2150381-5
- ADJUSTMENT OF THE STRIPPER MAY BE REQUIRED WHEN MOVING THE APPLICATOR BETWEEN BENCH AND LEADMAKER APPLICATIONS.
- APPLY PART NUMBER 1-23419-5 LOCTITE TO THREADS OF ITEM 62.
 APPLY PART NUMBER 2-23419-6 LOCTITE TO THREADS OF ITEM 242.
- GREASE THREADS, GROOVE AND O-RING ON ITEMS 139 & 153.
- MAGNET, ITEM 166 MUST BE ORIENTED CORRECTLY IN ORDER TO PROPERLY ACTUATE THE COUNTER.
- CRIMP HEIGHT REFERENCE SETTING WAS THE SETTING USED WHEN THE APPLICATOR WAS QUALIFIED AT THE FACTORY. ADJUSTMENT MAY BE NECESSARY WHEN RUNNING APPLICATOR IN THE FIELD.
- SPARE FEED CAM STORAGE LOCATION REFER TO INSTRUCTION SHEET FOR ADDITIONAL INFORMATION.
- THE RECOMMENDED SET-UP FOR END FEED APPLICATORS IS POST-FEED WITH ITEM 2119653-1. THE APPLICATOR CAN BE CONFIGURED FOR PRE-FEED WITH ITEM 2119652-1 BUT MAY ENCOUNTER PROBLEMS WITH SOME APPLICATIONS. FEED ISSUES OR TERMINAL JAMMING MAY OCCUR IN THE PRE-FEED CONFIGURATION.
- WIRE BARREL SEAM DOES NOT FULLY CLOSE ON 16 AWG WIRE SIZE, THEREFORE USE OF THIS WIRE SIZE IS NOT RECOMMENDED BY A.T. HOWEVER, IS APPROVED BY TERMINAL PRODUCT ENGINEER.
- TERMINAL LUBRICANT IS RECOMMENDED.

***WARNING**
 ON INSTALLATION, SET WIRE DISC, ITEM 40 TO LARGEST WIRE SIZE SETTING. USE OF SETTINGS BELOW MINIMUM REQUIRED CRIMP HEIGHT SETTING WILL CAUSE DAMAGE TO CRIMP TOOLING.

PACIFIC VERSION
 Shown on sheets 3 of 4 & 4 of 4
 (Atlantic version shown on sheets 1 of 4 & 2 of 4)

SET UP GAUGE	LOC	DIST	REVISIONS			
2119599-2	A	66	REV	DATE	BY	APPV
			-	SEE SHEET 1	-	-

-	1	1	1	1	2119782-1	FINE ADJUST HEAD ASM, PACIFIC STYLE	251	
-	-	-	1	-	2119640-1	PUSH ROD, AIR FEED	250	
-	-	-	1	-	1803259-1	BUSHING, FLANGED	249	
-	1	1	1	1	1-22279-3	SPRING, COMPRESSION	246	
-	1	1	1	1	2119082-9	CAM, SNAIL, INSULATION ADJUSTMENT	244	
-	1	1	1	1	2079764-1	WASHER, WAVE SPRING, CREST-TO-CREST	243	
-	1	1	1	1	2119083-1	RETAINER, INSULATION DIAL	242	
-	-	2	-	-	2168400-7	SHCS, LOW HEAD, RoHS, M5 X 10	240	
-	-	-	-	1	2119580-1	MECHANICAL FEED ASSEMBLY	239	
-	-	-	1	-	2063440-1	AIR FEED MODULE	238	
-	-	1	-	-	2119740-2	TAG, IDENTIFICATION	213	
-	4	4	4	4	2079383-9	SCR, BHSC, RoHS (M6 X 20)	186	
-	-	REF	-	-	1901697-1	FEED FINGER ASSEMBLY, EF	183	
-	-	-	2	-	21045-3	RING, RETAIN, EXTERN, 3/16 CRESCENT	172	
-	1	1	1	1	994969-1	MAGNET, RARE EARTH HIGH ENERGY	166	
-	REF	REF	REF	REF	994970-2	COUNTER, MAGNETIC	164	
-	-	-	1	-	240638-1	SPRING, FEED FINGER	163	
-	1	1	1	1	8-21084-1	O-RING, .801 ID, .070 DIA. MAT.	153	
-	-	-	1	-	2119641-2	FEED CAM, AIR FEED	152	
-	1	1	1	1	2119798-2	DETENT PIN	145	
-	1	1	1	1	2079383-8	SCR, BHSC, RoHS (M4 X 16)	144	
-	-	-	-	1	2119653-2	FEED CAM, POST FEED	142	
-	1	1	1	1	2119655-6	APPLICATOR BASIC ASSEMBLY, EF	141	
-	1	1	1	1	2119651-1	RAM, ASIAN STYLE, END FEED	140	
-	1	1	1	1	2119092-2	BOLT, ADJUSTMENT	139	
-	-	-	1	-	3-23627-7	PIN, RETAIN, GRVD, 3/16 X .854	137	
-	-	REF	-	-	SEE NOTE 4	MEMORY CHIP, PROGRAMMED	135	
-	-	1	-	-	1633743-1	SERVO FEED LATCH ASM	133	
-	1	1	1	1	2119955-2	ASSY, LUBRICATOR, END FEED	84	
-	1	1	1	1	455888-4	SPACER, CRIMPER	82	
-	1	1	1	1	2119956-2	DOCUMENTATION PACKAGE	71	
-	2	2	2	2	2-18032-2	SCR, SET, FLT POINT M3 X 10.0	70	
-	1	-	1	1	2119740-1	TAG, IDENTIFICATION	67	
-	2	2	2	2	2168078-1	SCREW, DRIVE, RH, RoHS, 2 x .188	66	
-	1	1	1	1	2119793-1	LIMITER, ADJUSTMENT BOLT	63	
-	3	3	3	3	992763-5	SCR, SET, SOC, CONE POINT, M3 X 4.0	62	
-	-	-	-	1	5-18022-5	SCR, HEX HD CAP, M4 X 6.0	59	
-	-	-	-	1	2063961-1	FEED FINGER	58	
-	4	4	4	4	2168400-4	SHCS, LOW HEAD, RoHS, M4 X 8	57	
-	2	2	2	2	1-2168083-4	SCR, SKT HD CAP, RoHS, M4 X 5	56	
-	2	2	2	2	5018030-2	NUT, HEX, REG, RoHS, M4	55	
-	2	2	2	2	5018030-1	NUT, HEX, REG, RoHS, M3	54	
-	2	2	2	2	986965-8	NUT, LOCK, HEX, TORQUE (M4)	53	
-	-	-	1	-	2119792-2	PAWL, EF, AIR	51	
-	-	-	1	2	18023-9	SCR, SKT HD CAP M4 X 6.0	49	
-	-	-	-	1	2119652-1	FEED CAM, PRE FEED	48	
-	1	1	1	1	2079383-7	SCR, BHSC, RoHS (M8 X 25)	41	
-	1	1	1	1	2119645-1	DISC, NUMBERED FA WIRE ADJUSTMENT	40	
-	1	1	1	1	2119957-1	APPLICATOR SHIM PACK	39	
-	1	1	1	1	1-2119644-2	RAM WASHER, PRECISION	38	
-	8	8	8	8	1-18028-2	WASHER, FLAT, REG M4	33	
-	2	2	2	2	2168083-9	SCR, SKT HD CAP, RoHS, M4 X 20	31	
-	2	2	2	2	1-2168083-0	SCR, SKT HD CAP, RoHS, M4 X 10	29	
-	1	1	1	1	240639-1	STRIPPER (MACHINING)	27	
-	2	2	2	2	1320906-1	STUD, THREADED	25	
-	1	1	1	1	1752371-1	PLATE, STRIP GUIDE	24	
-	2	2	2	2	2-22281-3	SPRING, COMPRESSION	22	
-	1	1	1	1	1752373-4	DRAG	20	
-	1	1	1	1	1901696-9	STRIP GUIDE, REAR	19	
-	1	1	1	1	1901695-9	STRIP GUIDE, FRONT	18	
-	1	1	1	1	240644-1	PLATE, REAR SHEAR	11	
-	-	-	-	-	-	-	10	
-	1	1	1	1	690482-1	PLATE, FRONT SHEAR	9	
-	1	1	1	1	2-1333220-4	ANVIL, COMBINATION, .120	8	
-	1	1	1	1	2217206-1	BLADE, SLUG	7	
-	-	-	-	-	-	-	6	
-	1	1	1	1	1-240641-7	SPACER	5	
-	1	1	1	1	1-238009-1	BLOCK, FL CRIMPER SPACER	4	
-	1	1	1	1	1633965-9	CRIMPER, INSULATION O PREMIUM	3	
-	1	1	1	1	455888-4	SPACER, CRIMPER	2	
-	1	1	1	1	456409-2	CRIMPER, WIRE .120 "F" PREMIUM	1	
-	77	27	25	22	21	PART NO	DESCRIPTION	ITEM NO

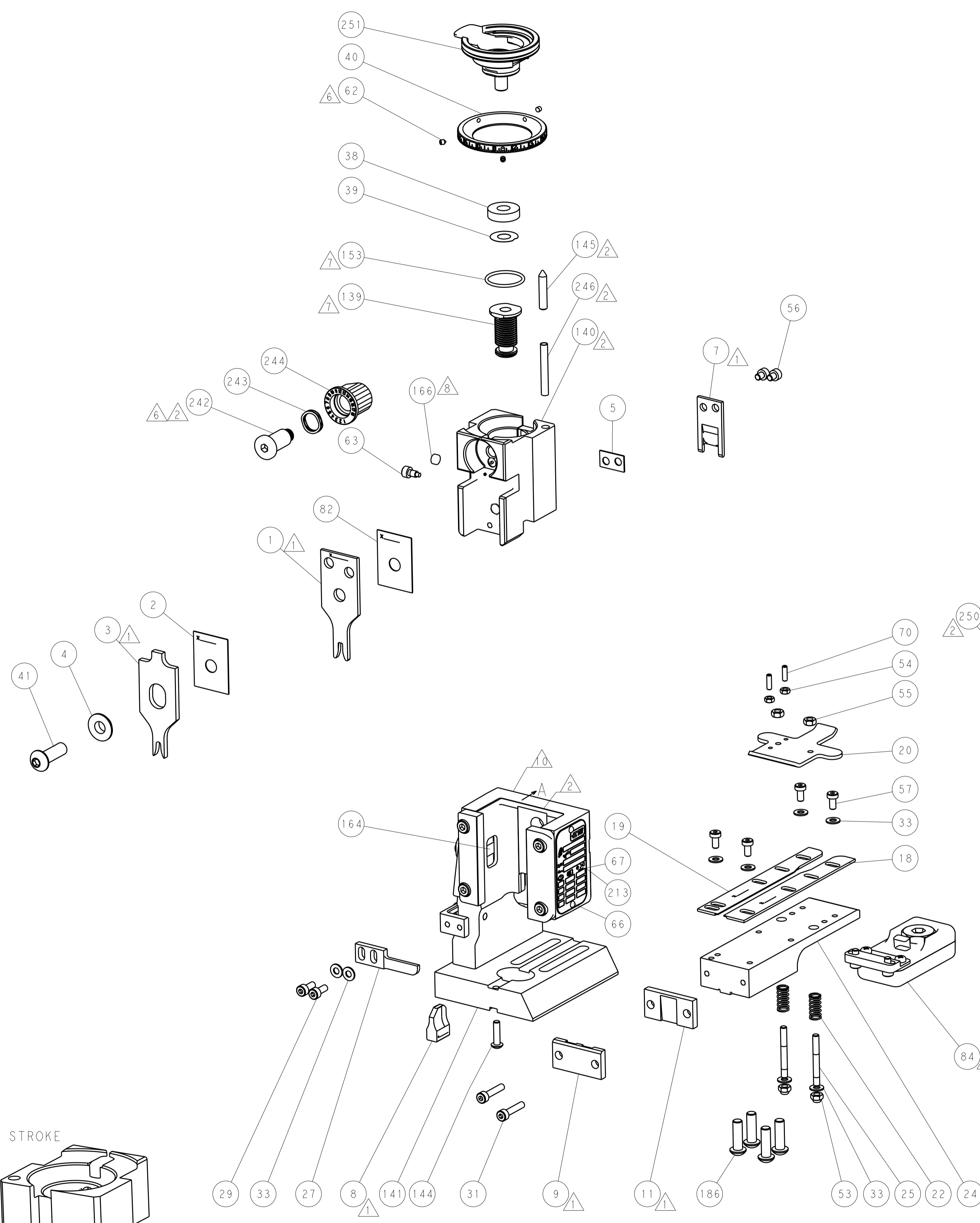
DIMENSIONS:		TOLERANCES UNLESS OTHERWISE SPECIFIED:		DWG: 14OCT2013		CHK: G. BAILEY		APV: M. CLIFFORD		NAME: Ocean End Feed Applicator	
mm		0 PLC ±		14OCT2013		14OCT2013		14OCT2013		SIZE: CAGE CODE: DRAWING NO: 00779 ©=2150381	
mm		1 PLC ±		PRODUCT SPEC		APPLICATION SPEC		WEIGHT		SCALE: 1:1 SHEET 3 OF 4 REV B	
mm		2 PLC ±		MATERIAL		FINISH		RESTRICTED TO		Customer Accessible Production Drawing	

LOC		DIST		REVISIONS			
A	66	P	LTM	DESCRIPTION	DATE	DWN	APVD
				SEE SHEET 1			

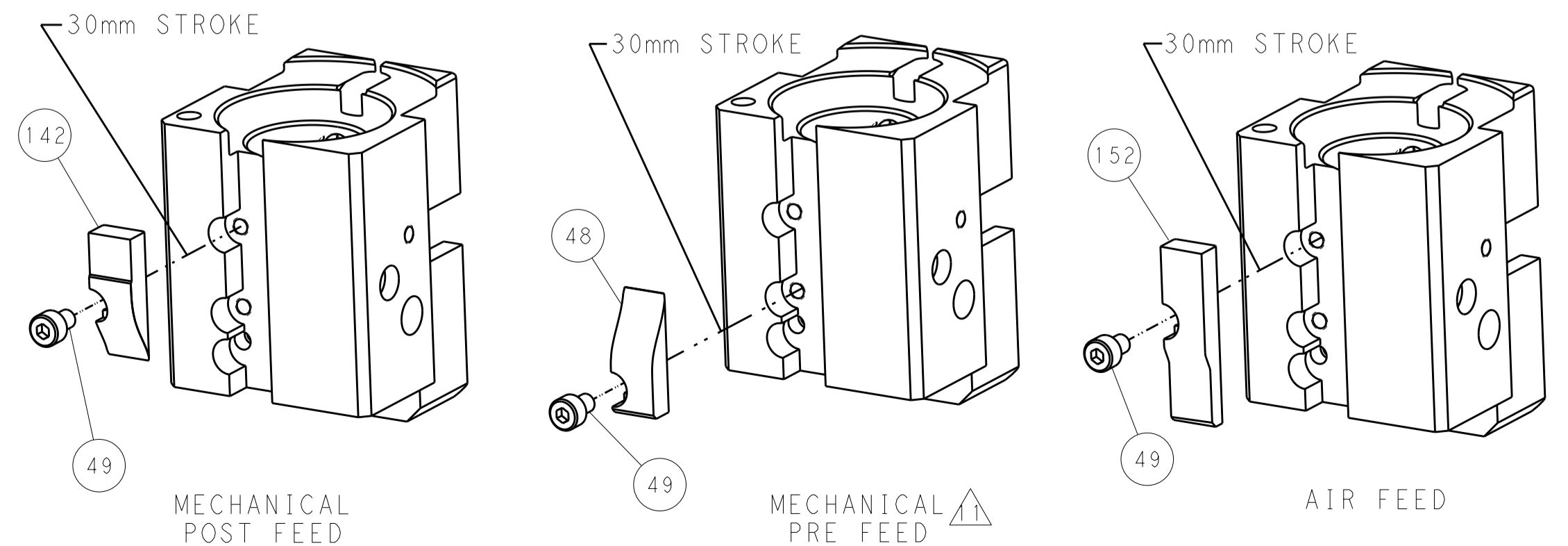
FEED TYPE MECHANICAL

PNEUMATIC

SERVO LATCH PLATE



CAM POSITIONS



PACIFIC VERSION
 Shown on sheets 3 of 4 & 4 of 4
 (Atlantic version shown on sheets 1 of 4 & 2 of 4)

DIMENSIONS:		TOLERANCES UNLESS OTHERWISE SPECIFIED:		DWN		TE Connectivity	
mm	0 PLC	±		EL_GROSS	14OCT2013	Harrisburg, PA 17105-3608	
	1 PLC	±		CHK	G.BAILEY	NAME	
	2 PLC	±		APVD	M.CLEFFORD	Ocean End Feed Applicator	
	3 PLC	±		PRODUCT SPEC		SIZE	CAGE CODE DRAWING NO
	4 PLC	±		APPLICATION SPEC		A1	00779 C=2150381
	ANGLES	±		WEIGHT		SCALE	SHEET 4 OF 4 REV B
MATERIAL	FINISH			Customer Accessible Production Drawing		SCALE	1:1