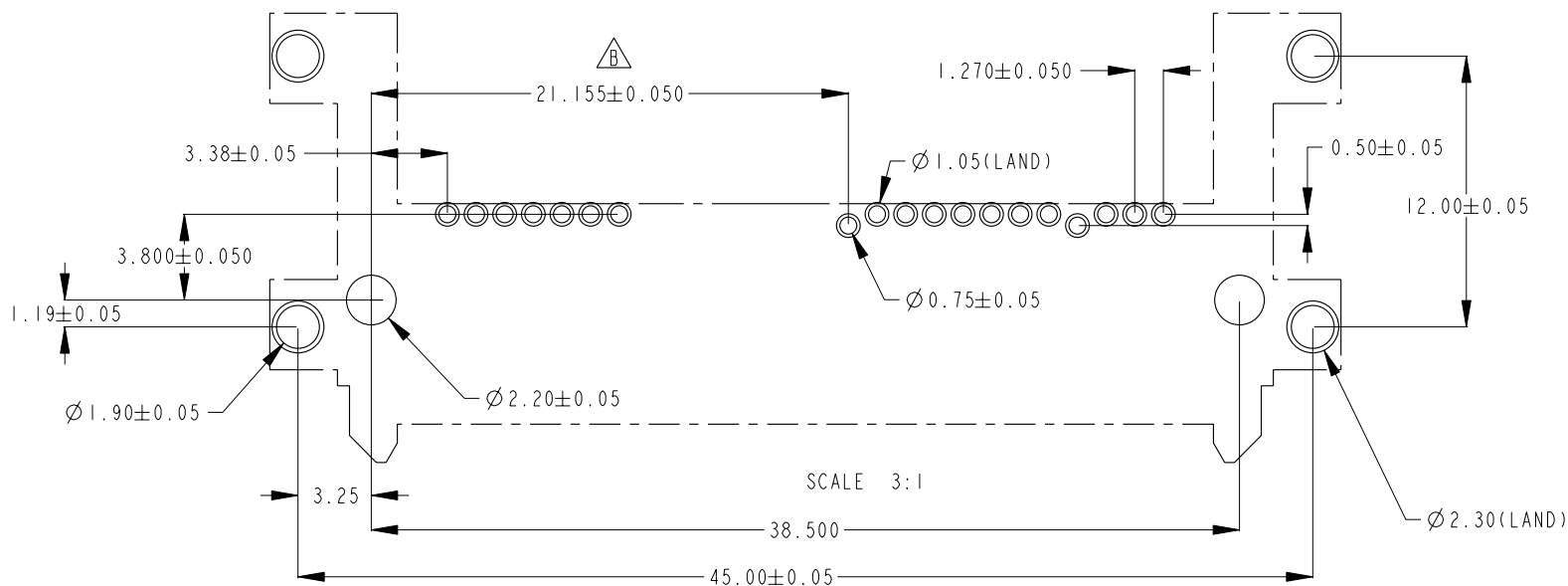


PRODUCT No.  
10085945-001LF



NOTES:

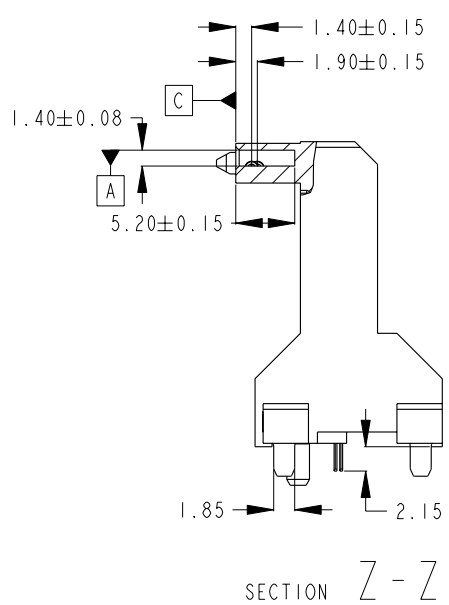
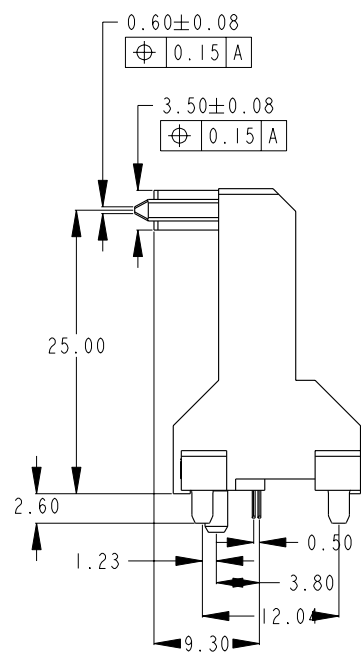
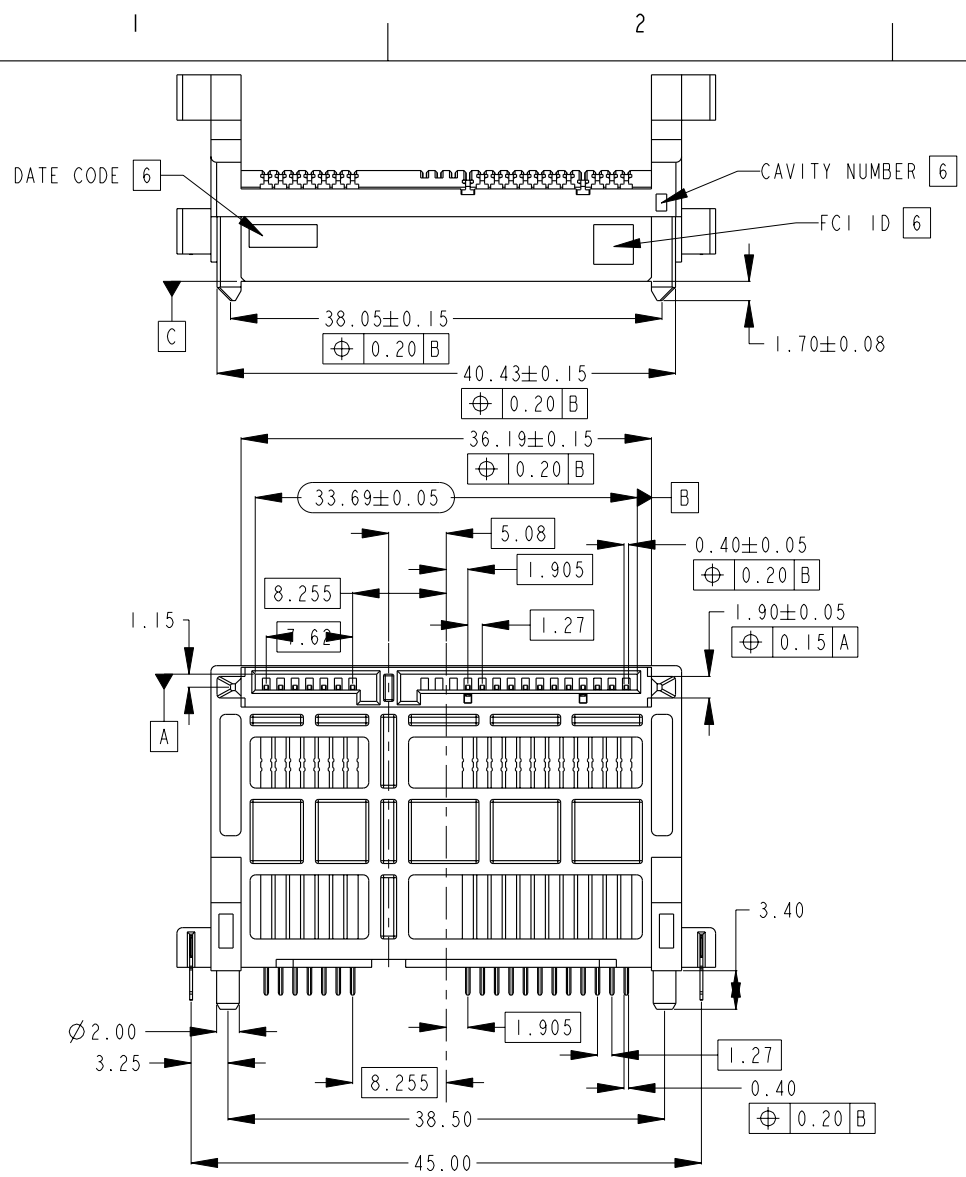
1. MATERIAL:
  - 1) HOUSING: HIGH TEMP THERMAPLASTIC, UL 94V-0  
COLOUR: BLACK
  - 2) TERMINAL: COPPER ALLOY
  - 3) HOLD DOWN: COPPER ALLOY
2. FINISH:
  - 1) TERMINAL: 30u" Au MIN AT CONTACT AREA OVER 50u" NICKEL,  
50u" TIN MIN AT SOLDER TAIL OVER 50u" NICKEL.
  - 2) HOLD DOWN: 50u" TIN MIN OVERALL OVER 50u" NICKEL.
3. THE HOUSING WILL WITHSTAND EXPOSURE TO 260°C PEAK TEMPERATURE FOR 10 SECONDS IN A CONVECTION, INFRA-RED OR VAPOR PHASE REFLOW OVEN.
4. THIS PRODUCT MEETS EUROPEAN UNION DIRECTIVES AND OTHER COUNTRY REGULATIONS AS DESCRIBED IN GS-22-008.
5. THE STANDARD PACKAGING IS IN TRAY.
6. APPROXIMATION LOCATION FOR FCI ID, CAVITY NUMBER & DATE CODE.
7. A  $\triangle$  BE NEXT TO ANY DIMENSION, VIEW, OR NOTE WHICH HAS BEEN MODIFIED WITH THE CURRENT DRAWING REVISION.

RECOMMENDED PCB LAYOUT

spec ref	-	dr	KP TAY	2007-11-01	projection 	MM 	size	A4	scale	2:1
tolerance std	TOLERANCES UNLESS OTHERWISE SPECIFIED	eng	KP TAY	2010-10-27			ecn no	ELX-S-001867-1		
-	-	chr	KP TAY	2010-10-27			rel level	RELEASED		
surface	✓	appr	JOEY NG	2010-10-27	product family	SATA				
linear	0.X ±0.30		title	SATA RECEPTACLE	dwg no	10085945	rev	B		
	0.XX ±0.20									
	0.XXX ±0.10									
angular	0° ±2°	www.fci.com	cat. no.	-	CUSTOMER	sheet 1 of 2				



Copyright FCI.



spec ref	-	dr	KP TAY	2007-11-01	projection	MM	size	A4	scale	2:1											
tolerance std	TOLERANCES UNLESS OTHERWISE SPECIFIED	eng	KP TAY	2010-10-27			ecn no	ELX-S-001867-1													
-	-	chr	KP TAY	2010-10-27				product family	SATA	rel level	RELEASED										
surface	<table border="1"> <tr> <td>linear</td> <td>0.X</td> <td>±0.30</td> </tr> <tr> <td></td> <td>0.XX</td> <td>±0.20</td> </tr> <tr> <td></td> <td>0.XXX</td> <td>±0.10</td> </tr> <tr> <td>angular</td> <td>0°</td> <td>±2°</td> </tr> </table>	linear	0.X	±0.30		0.XX	±0.20		0.XXX	±0.10	angular	0°	±2°	appr	JOEY NG	2010-10-27	customer			rev	B
linear	0.X	±0.30																			
	0.XX	±0.20																			
	0.XXX	±0.10																			
angular	0°	±2°																			
		<b>www.fci.com</b>			title SATA RECEPTACLE HIGH RISE R/A TH			sheet 2 of 2													

ProjE File - REV C - 2009-06-09