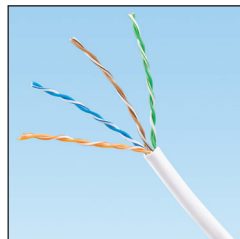


TX5e™ Category 5e U/UTP Copper Cable

specifications

Category 5e cable shall meet ANSI/TIA-568-C.2 Category 5e component standard. The conductors shall be 24 AWG construction with FEP/polyolefin (CMP) or polyolefin (CMR) insulation. The copper conductors shall be twisted in pairs covered by a low smoke, flame retardant (CMP) PVC jacket or a flame retardant (CMR) PVC jacket.



technical information

| | |
|--------------------------------|---|
| Electrical performance: | Certified channel performance in a 4-connector configuration up to 100 meters and meets ANSI/TIA-568-C.2 Category 5e standard at swept frequencies up to 100 MHz Certified component performance up to 100 meters and meets the component requirements of ANSI/TIA-568-C.2 Category 5e component standard at swept frequencies up to 100 MHz |
| Conductors/insulators: | Plenum – 24 AWG bare copper wire covered by FEP/polyolefin insulation Riser – 24 AWG bare copper wire covered by polyolefin insulation |
| Flame rating: | Plenum – NFPA 262 Riser – UL1666 |
| PoE compliance: | Meets IEEE 802.3af and IEEE 802.3at for PoE applications |
| Installation tension: | 25 lbf (110N) maximum |
| Temperature rating: | 32°F to 122°F (0°C to 50°C) during installation Plenum – -4°F to 167°F (-20°C to 75°C) during operation Riser – -4°F to 167°F (-20°C to 75°C) during operation |
| Cable jacket: | Plenum – low smoke, flame-retardant PVC Riser – flame-retardant PVC |
| Cable diameter: | Plenum – 0.210 in. (5.3 mm) nominal Riser – 0.187 in. (4.7 mm) nominal |
| Cable weight: | Plenum – 25 lbs./1000 ft. (11 kg/305m) Riser – 18 lbs./1000 ft. (8 kg/305m) |
| Packaging: | 1000 ft. (305m) in an easy payout carton Package tested to ISTA Procedure1A |

key features and benefits

| | |
|---|---|
| Third party tested | Cable has been tested as part of the Category 5e UTP Copper Cabling System by an independent laboratory and complies with the electrical channel requirements of the following standard: ANSI/TIA-568-C.2 Category 5e |
| Descending length cable markings | Easy identification of remaining cable reduces installation time and cable scrap |
| Tested beyond the standards | Cable has been characterized to 350 MHz, 250 MHz above the standard |
| Easy payout carton | Ensures proper performance and provides quick installation |

applications

The Panduit® TX5e™ Cabling System provides Gigabit Ethernet performance with usable bandwidth beyond 100 MHz. With certified performance to the ANSI/TIA-568-C.2 Category 5e and ISO 11801 Class D standards, this system will support the following applications:

- Ethernet 10BASE-T, 100 BASE-T (Fast Ethernet), 1000BASE-T (Gigabit Ethernet)
- 155 Mb/s ATM, 622 Mb/s ATM
- Token Ring 4/16

Category 5e U/UTP Copper Cable

| | |
|----------------|------------|
| Plenum: | PUP5C04*-U |
| Riser: | PUR5C04*-U |

Cable Prep Tools

| | |
|-----------------------------|-------|
| Wire snipping tool: | CWST |
| Wire stripping tool: | CJAST |

*For standard cable colors, add suffix BU (Blue), WH (White), RD (Red), OR (Orange), YL (Yellow), GR (Green), VL (Violet), IG (International Gray), or BL (Black).

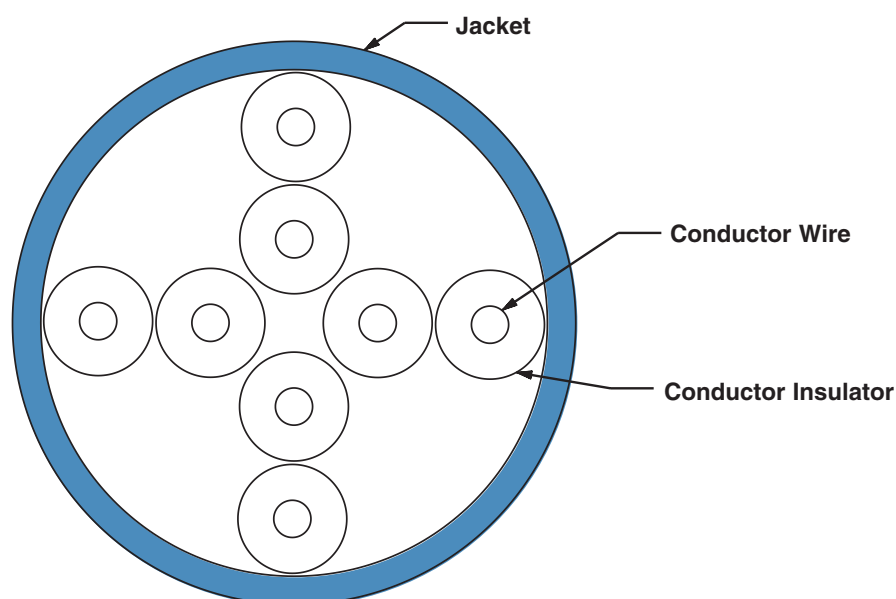
Visit www.panduit.com for connectivity components.

TX5e™ Category 5e U/UTP Copper Cable

additional specifications

| Mechanical Test | |
|--|--|
| <i>Ultimate Breaking Strength</i> | >90 lbf (400N) |
| <i>Minimum Bend Radius</i> | 4 x cable diameter |
| Electrical Test | |
| <i>Nominal Velocity of Propagation (NVP)</i> | CMP – 66% nominal CMR – 70% nominal |
| <i>Operating Voltage, Maximum</i> | 80V |

cable construction



WORLDWIDE SUBSIDIARIES AND SALES OFFICES

PANDUIT CANADA
Markham, Ontario
cs-cdn@panduit.com
Phone: 800.777.3300

PANDUIT EUROPE LTD.
London, UK
cs-emea@panduit.com
Phone: 44.20.8601.7200

PANDUIT SINGAPORE PTE. LTD.
Republic of Singapore
cs-ap@panduit.com
Phone: 65.6305.7575

PANDUIT JAPAN
Tokyo, Japan
cs-japan@panduit.com
Phone: 81.3.6863.6000

PANDUIT LATIN AMERICA
Guadalajara, Mexico
cs-la@panduit.com
Phone: 52.33.3777.6000

PANDUIT AUSTRALIA PTY. LTD.
Victoria, Australia
cs-aus@panduit.com
Phone: 61.3.9794.9020

For a copy of Panduit product warranties, log on to www.panduit.com/warranty

PANDUIT®

For more information
Visit us at www.panduit.com
Contact Customer Service by email: cs@panduit.com
or by phone: 800.777.3300

©2015 Panduit Corp.
ALL RIGHTS RESERVED.
COSP262--WW-ENG
Replaces WW-COSP177
8/2015