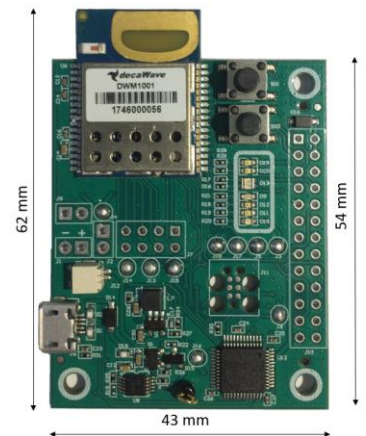


## Overview

- Development board for Decawave DWM1001 module
- Can be used as anchor, tag or gateway to build Real Time Location Systems

## Features & Benefits

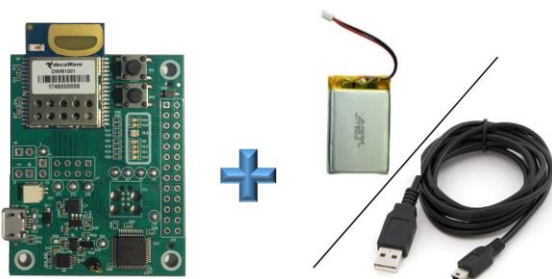
- Supports UWB & *Bluetooth*<sup>®</sup>
- J-Link on-board for debug and flashing via USB
- Configure and interrogate the device via API commands from a PC terminal
- Flexible DWM1001 module architecture:
  - Software API to design system on module applications
  - Module API for configuration & control via SPI, UART & BLE
- Access to all DWM1001 GPIOs and interfaces via on board headers
- 26-pin Raspberry PI compatible header (header not included)
- Reset and user-defined buttons and LEDs
- Battery charging circuit



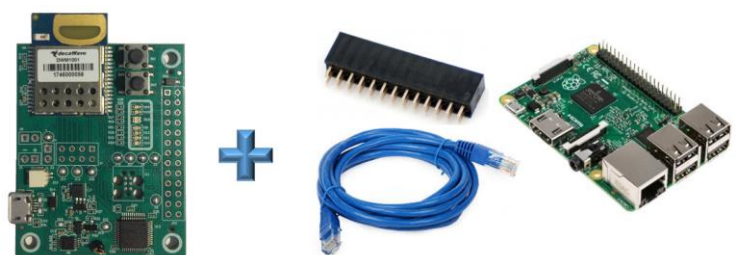
## Power Sources

- USB Cable (included) to a PC, power supply or battery bank
- Battery connector (included) for an external Li-Po battery (battery not included)

### Build an Anchor or a Tag

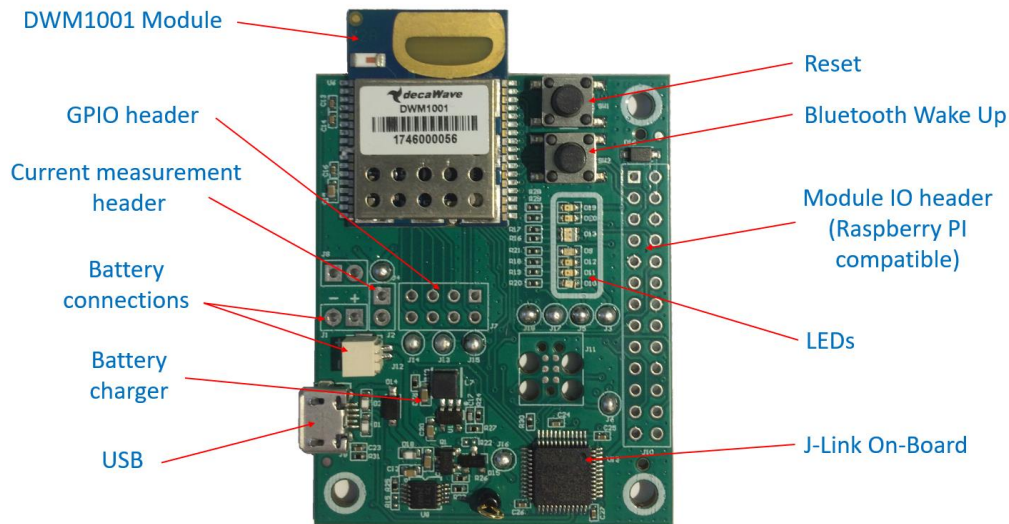


### Build a Gateway

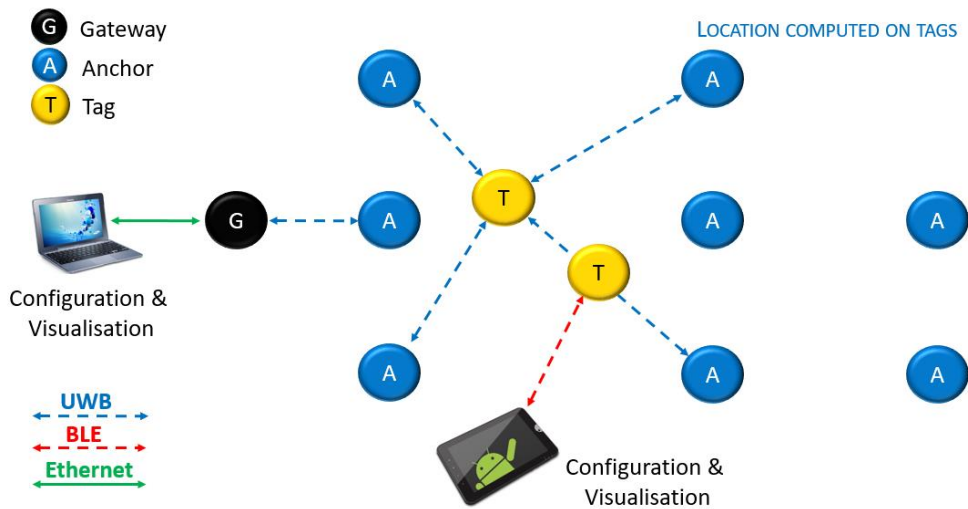


## Technical Data

- Dimensions: 62 mm x 43 mm



## Full RTLS System using the DWM1001-DEV in Anchors, Tags and Gateway



## Complementary Products

- MDEK1001: Development and evaluation kit: 12 units, Android application
- Web Client available in Q1 2018



### Get Started:

- Learn more at: [www.decawave.com/products](http://www.decawave.com/products)
- Download the RTLS SW at [www.decawave.com/support/software](http://www.decawave.com/support/software)

### Join the community:

- <http://www.decawave.com/decaforum/>