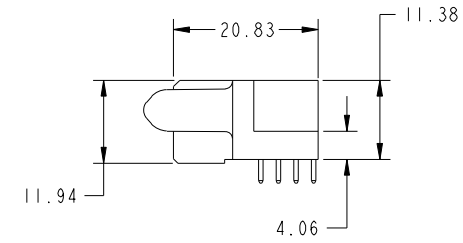
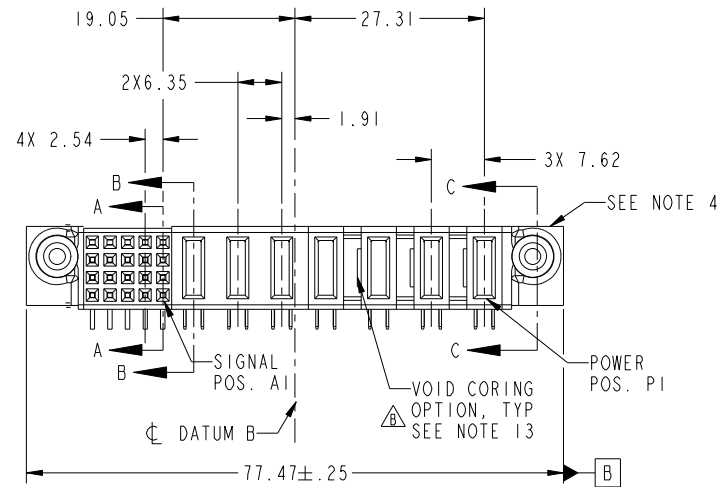


Tous droits strictement reserves. Reproduction ou communication a des tiers interdite sous quelque forme que ce soit sans autorisation écrite du propriétaire. Propriete de c FCI. Droits de reproduction FCI.



All rights strictly reserved. Reproduction or issue to third parties in any form whatever is not permitted without written authority from the proprietor. Property of FCI. Copyright FCI.

PRODUCT NO.	ROWS	SIGNAL					POWER						E1	
		E2	5	4	3	2	1	P7	P6	P5	P4	P3		P2
51915-078-- Note: 3	D C B A		H	H	H	H	PA	PA	PA	PA	PA	PA	PA	



CODE	DIM "M" MATING LENGTH	CONTACT TYPE
PA	[1.07]	POWER
H	[N/A]	SIGNAL
G	[N/A]	SIGNAL
F	[N/A]	SIGNAL
E	[N/A]	SIGNAL

mat'l code				SEE NOTE 2		tolerances unless otherwise specified		CUSTOMER		FCI	
ltr	ecn no.	dr	date	linear	0.X ±0.5	projection		COPY		www.fciconnect.com	
A	DG05-0290	GuoJM	5/30/05		0.XX ±0.25			title		4ACP+3P+20S	
B	DG07-0498	JW	09/15/08		0.XXX ±0.10			R/A STB RECEPTACLE		product family PwrBlade code 213	
C	DG09-0142	JW	05/12/09	angles	0° ±2°	scale		size		dwg no 51915-078 sheet 1 of 4	
				dr	SLUO 5/25/05	1:1		A			
				enr	SLUO 5/25/05						
				chr	VICTOR LIN 5/30/05						
				appd	JOSEPH HSIA 5/30/05						
sheet index	revision sheet	C 1	C 2	C 3	C 4						

cage code 22526

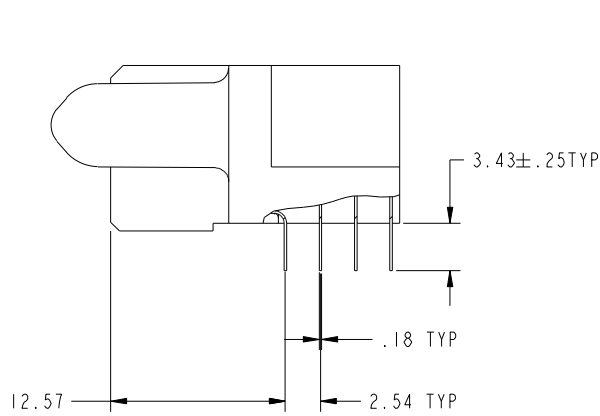
Pro/E

Tous droits strictement reserves. Reproduction ou communication a des tiers interdite sous quelque forme que ce soit sans autorisation ecrite du proprietaire. Propriete de c FCI. Droits de reproduction FCI.

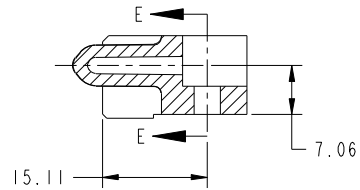


All rights strictly reserved. Reproduction or issue to third parties in any form whatever is not permitted without written authority from the proprietor. Property of FCI. Copyright FCI.

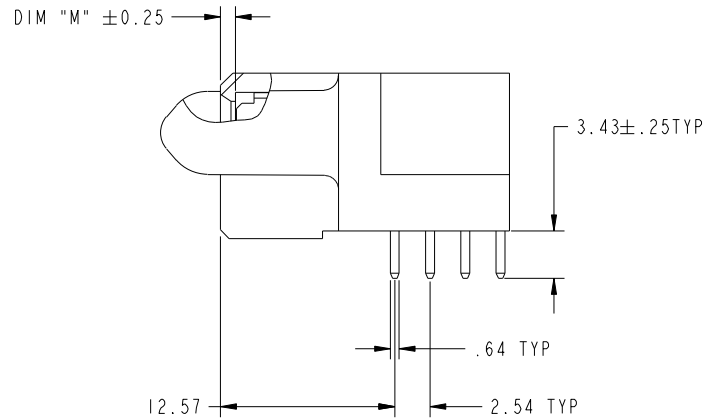
PRODUCT NUMBER  
51915-078--  
NOTE: 3



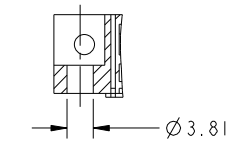
BROKEN-OUT SECTION A-A  
SCALE 2:1



SECTION C-C



BROKEN-OUT SECTION B-B  
SCALE 2:1



PARTIAL SECTION E-E

mat'l code		SEE NOTE 2		tolerances unless otherwise specified		CUSTOMER		www.fciconnect.com		
ltr	ecn no.	dr	date	linear	0.X ± 0.5	COPY		projection	title	
C					0.XX ± 0.25					4ACP+3P+20S R/A STB RECEPTACLE
					0.XXX ± 0.10					
				angles	0° ± 2°	scale		product family	PwrBlade	
				dr	SLUO 5/25/05	1:1		size	code	
				enrg	SLUO 5/25/05			dwg no	213	
				chr	VICTOR LIN 5/30/05			A	sheet	
				appd	JOSEPH HSIA 5/30/05					51915-078
sheet index	revision sheet									

cage code 22526

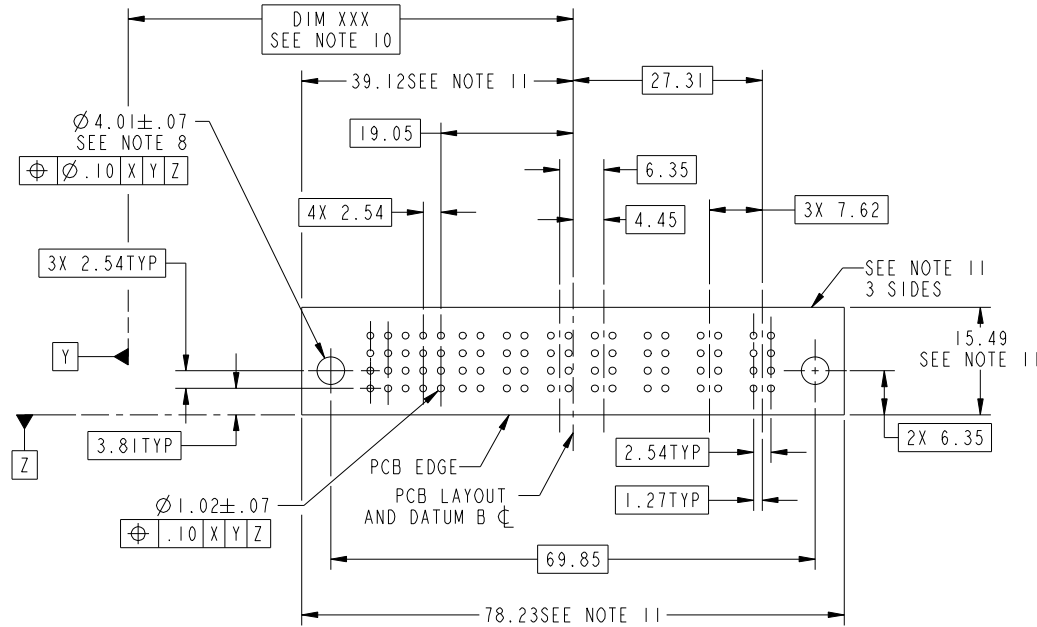
Pro/E

Tous droits strictement réservés. Reproduction ou communication a des tiers interdite sous quelque forme que ce soit sans autorisation écrite du propriétaire. Propriété de c FCI. Droits de reproduction FCI.



All rights strictly reserved. Reproduction or issue to third parties in any form whatever is not permitted without written authority from the proprietor. Property of FCI. Copyright FCI.

PRODUCT NUMBER  
51915-078--  
NOTE: 3



mat'l code				SEE NOTE 2		tolerances unless otherwise specified		CUSTOMER		www.fciconnect.com	
ltr	ecr no.	dr	date	linear	0.X ± 0.5		COPY		title 4ACP+3P+20S R/A STB RECEPTACLE		
C					0.XX ± 0.25		projection				
					angles	0.XXX ± 0.10				size dwg no 51915-078 sheet 3	
				dr		SLUO	5/25/05			scale 1:1	
				enr	SLUO	5/25/05	scale 1:1		cage code 22526		
				chr	VICTOR LIN	5/30/05					
				appd	JOSEPH HSIA	5/30/05					
sheet index	revision sheet										

Pro/E

cage code 22526

Tous droits strictement reserves. Reproduction ou communication a des tiers interdite sous quelque forme que ce soit sans autorisation écrite du propriétaire. Propriete de c FCI. Droits de reproduction FCI.



All rights strictly reserved. Reproduction or issue to third parties in any form whatever is not permitted without written authority from the proprietor. Property of FCI. Copyright FCI.

PRODUCT NUMBER  
51915-078\_-  
NOTE: 3

NOTES:

1. DIMENSIONS AND TOLERANCES ARE IN ACCORDANCE WITH ASME Y14.5M, 1994 UNLESS OTHERWISE SPECIFIED.

CONNECTOR NOTES:

2. HOUSING MATERIAL: UL 94 V-0 GLASS FILLED HIGH-TEMP THERMOPLASTIC  
POWER CONTACT MATERIAL: COPPER ALLOY  
SIGNAL PIN MATERIAL: COPPER ALLOY

3. PLATING: SEE ITEM 5 & 6 IN PRINT 10064183 FOR PLATING SPEC OF 51915-078; 51915-078LF PRESPECTIVELY

4. MANUFACTURER'S NAME, P/N, AND DATE CODE TO APPEAR ON THIS SURFACE.

5. PRODUCT SPECIFICATION GS-12-149.  
APPLICATION SPECIFICATION BUS-20-067.

6. PACKAGED IN TRAYS.

PCB NOTES:

7. ALL HOLE DIAMETERS ARE FINISHED HOLE SIZE.

8. MOUNTING HOLES, WHERE APPLICABLE, ARE UNPLATED.

9.  $\varnothing 1.151 \pm 0.025$  DRILLED HOLES PLATED WITH 0.008 MIN SnPb OR Sn OVER 0.03 TO 0.08 Cu PLATING TO ACHIEVE  $\varnothing 1.02 \pm .07$  HOLE.

10. "DIM XXX" TO BE DETERMINED BY THE CUSTOMER.

11. CONNECTOR KEEP-OUT ZONE.

12. A  $\Delta$  SYMBOL WILL BE NEXT TO ANY DIMENSION, VIEW, OR NOTE WHICH HAS BEEN MODIFIED WITH THE CURRENT DRAWING REVISION.

13. THE VOID CORING IN BETWEEN POWER MODULES, SIGNAL MODULES AND END MODULES ARE OPTIONAL AND THE SHAPE MAY BE DIFFERENT FOR OPTIMIZING THE MOLDING PROCESS. THE VOID CORING WILL NOT EFFECT TO PRODUCT FUNCTION.

mat'l code				SEE NOTE 2		tolerances unless otherwise specified		CUSTOMER		www.fciconnect.com	
ltr	ecn no.	dr	date	linear	0.X ± 0.5		COPY			title	
C					0.XX ± 0.25		projection			4ACP+3P+20S R/A STB RECEPTACLE	
					0.XXX ± 0.10					product family PwrBlade code	
				angles	0° + 2°		scale		size		
				dr	SLUO	5/25/05	1:1		dwg no		
				enr	SLUO	5/25/05	A		51915-078		
				chr	VICTOR LIN	5/30/05			sheet		
				appd	JOSEPH HSIA	5/30/05			4		
sheet index	revision sheet										

cage code 22526

Pro/E