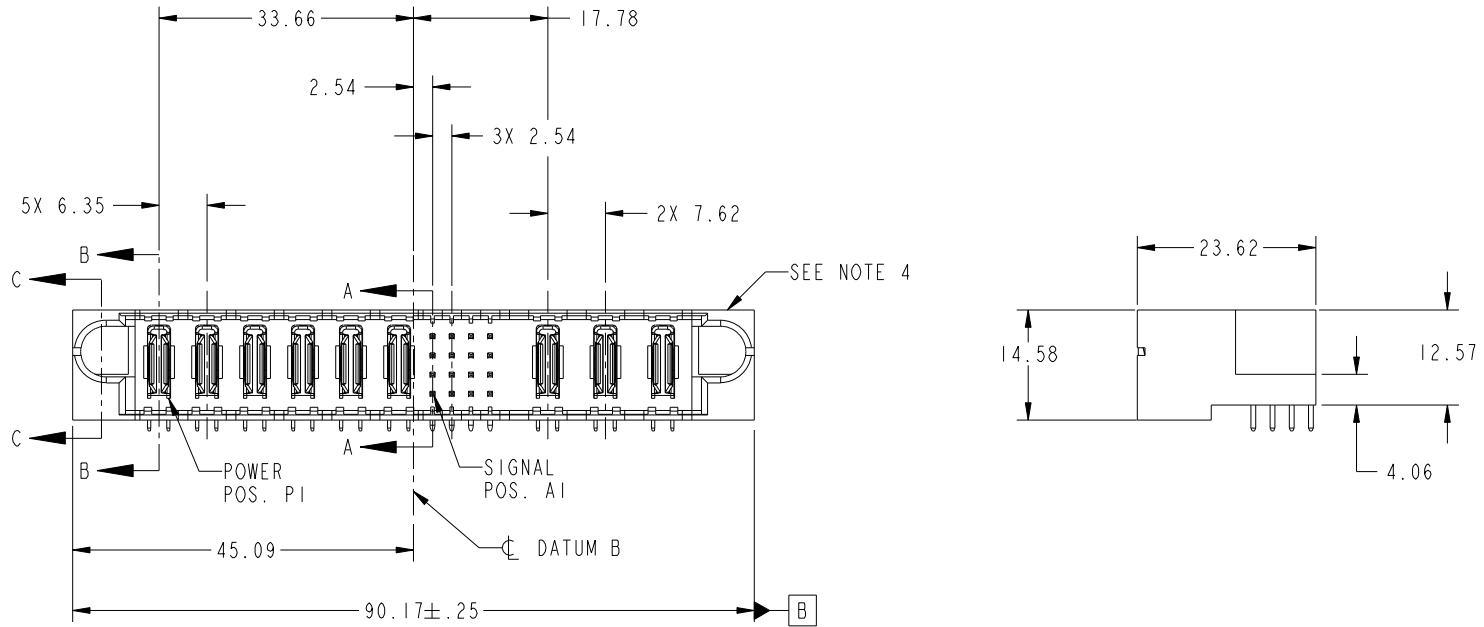


Tous droits strictement réservés. Reproduction ou communication a des tiers interdite sous quelque forme que ce soit sans autorisation écrite du propriétaire. Propriété de c.FCI. Droits de reproduction FCI.

All rights strictly reserved. Reproduction or issue to third parties in any form whatever is not permitted without written authority from the proprietor. Property of FCI. Copyright FCI.



PRODUCT NO.	ROWS	POWER					SIGNAL				POWER			E2		
		E1	P1	P2	P3	P4	P5	P6	1	2	3	4	P7		P8	P9
51939-214-- NOTE 3	D C B A		PA	PA	PA	PA	PA	PA	HUUU TTTT SFFF RRRR				PA	PA	PA	



CODE	DIM "M" MATING LENGTH	CONTACT TYPE
U	[6.86]	SIGNAL
T	[6.86]	SIGNAL
S	[6.86]	SIGNAL
R	[6.86]	SIGNAL
H	[5.59]	SIGNAL
G	[5.59]	SIGNAL
F	[5.59]	SIGNAL
PA	[N/A]	POWER

mat'l code				SEE NOTE		tolerances unless otherwise specified		CUSTOMER		 www.fciconnect.com	
lir	ecn no.	dr	date	linear	0.X ±0.5		COPY		projection		title
A	DG05-0516	Ryan	12/01/05		0.XX ±0.25		MM		6P+16S+3ACP R/A STB HEADER		
B	DG07-0498	JW	09/13/08		0.XXX ±0.10		scale		product family		code
				angles	0° ±2°		1:1		PwrBlade		213
				dr	RYAN YUAN	12/01/05			size		sheet
				enrg	SALLY LUO	12/02/05			dwg no		1 of 4
				chr	VICTOR LIN	12/01/05			A		
				appd	JOSEPH HSIA	12/01/05			51939-214		
sheet index	revision sheet	B 1	B 2	B 3	B 4						

B

B

1 | 2

Pro/E

PDM: Rev: B

STAT: Released

Printed: Dec 20, 2010

cage code 28506

4

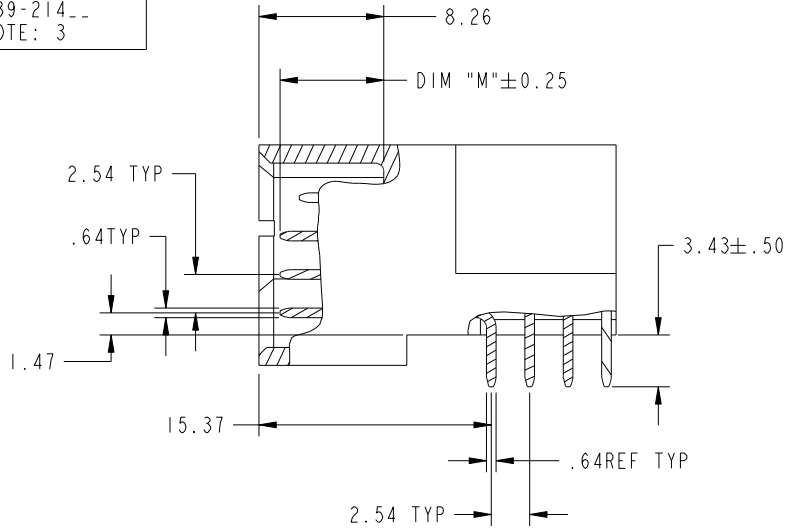
Tous droits strictement reserves. Reproduction ou communication a des tiers interdite sous quelque forme que ce soit sans autorisation ecrite du proprietaire. Propriete de c.FCI. Droits de reproduction FCI.

All rights strictly reserved. Reproduction or issue to third parties in any form whatever is not permitted without written authority from the proprietor. Property of FCI. Copyright FCI.

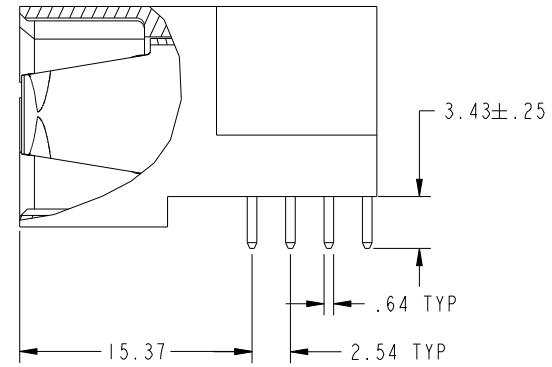


PRODUCT NUMBER

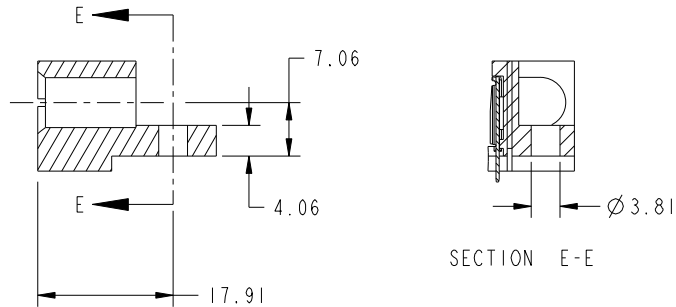
51939-214--
NOTE: 3



SECTION A-A
SCALE 2:1



SECTION B-B
SCALE 2:1



SECTION C-C

SECTION E-E

mat'l code		SEE NOTE		tolerances unless otherwise specified		CUSTOMER		www.fciconnect.com	
lir	ecn no.	dr	date	linear	0.X ±0.5	COPY		title	
B					0.XX ±0.25	projection		6P+16S+3ACP R/A STB HEADER	
				angles	0.XXX ±0.10			product family	
				dr	0° ±2°	MM		PwrBlade	
				enr	RYAN YUAN 12/01/05	scale		code	
				enr	SALLY LUO 12/02/05	1:1		213	
				chr	VICTOR LIN 12/01/05			sheet	
				appd	JOSEPH HSIA 12/01/05			2	
sheet index	revision sheet							cage code	
								22506	

A

A

B

B

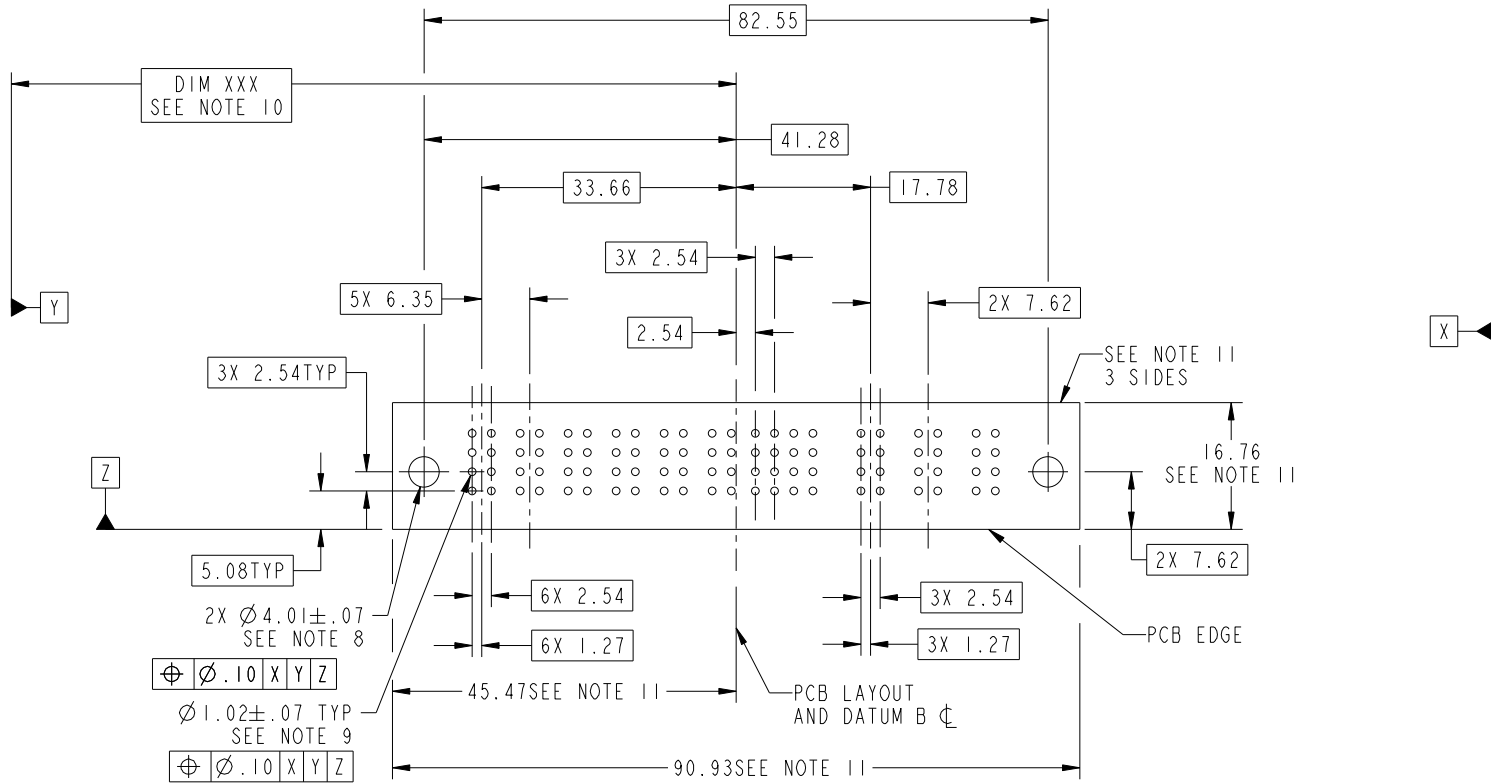
Tous droits strictement réservés. Reproduction ou communication a des tiers interdite sous quelque forme que ce soit sans autorisation écrite du propriétaire. Propriété de c.FCI. Droits de reproduction FCI.

All rights strictly reserved. Reproduction or issue to third parties in any form whatever is not permitted without written authority from the proprietor. Property of FCI. Copyright FCI.



PRODUCT NUMBER

51939-214--
NOTE: 3



RECOMMENDED PCB LAYOUT

mat'l code		SEE NOTE		tolerances unless otherwise specified		CUSTOMER		 www.fciconnect.com	
lfr	ecn no.	dr	date	linear	0.X ±0.5	COPY		title	
B				angles	0.XX ±0.25	projection		6P+16S+3ACP R/A STB HEADER	
					0.XXX ±0.10			product family PwrBlade	
				dr	0° ±2°	MM		code	213
				enr	RYAN YUAN 12/01/05	scale		size	sheet
				chr	SALLY LUO 12/02/05	1:1		dwg no	3
				appd	VICTOR LIN 12/01/05			A	51939-214
					JOSEPH HSIA 12/01/05				
sheet index	revision sheet								

cage code 28506

Pro/E

PDM: Rev:B

STATUS: Released

Printed: Dec 20, 2010

Tous droits strictement reserves. Reproduction ou communication a des tiers interdite sous quelque forme que ce soit sans autorisation ecrite du proprietaire. Propriete de c.FCI. Droits de reproduction FCI.

All rights strictly reserved. Reproduction or issue to third parties in any form whatever is not permitted without written authority from the proprietor. Property of FCI. Copyright FCI.



1 | 2

3

4

PRODUCT NUMBER
51939-214--
NOTE: 3

NOTES:

1. DIMENSIONS AND TOLERANCES ARE IN ACCORDANCE WITH ASME Y14.5M, 1994 UNLESS OTHERWISE SPECIFIED.

CONNECTOR NOTES:

2. MATERIAL: HOUSING MATERIAL: UL 94 V-0 GLASS FILLED HIGH-TEMP THERMOPLASTIC
POWER CONTACT MATERIAL: COPPER ALLOY
SIGNAL PIN MATERIAL: COPPER ALLOY

3. PLATING:

\triangle SEE ITEM 1 & 2 IN PRINT 10064183 FOR PLATING SPEC OF 51939-214; 51939-214LF PRESPECTIVELY

4. MANUFACTURER'S NAME, P/N, AND DATE CODE TO APPEAR ON THIS SURFACE.

5. PRODUCT SPECIFICATION GS-12-149.
APPLICATION SPECIFICATION BUS-20-067.

6. PACKAGED IN TRAYS.

PCB NOTES:

7. ALL HOLE DIAMETERS ARE FINISHED HOLE SIZE.

8. MOUNTING HOLES, WHERE APPLICABLE, ARE UNPLATED.

9. $\varnothing 1.151 \pm 0.025$ DRILLED HOLES PLATED WITH)
0.008 MIN SnPb OR Sn OVER 0.03
TO 0.08 Cu PLATING TO ACHIEVE
 $\varnothing 1.02 \pm 0.07$ HOLE.

10. "DIM XXX" TO BE DETERMINED BY THE CUSTOMER.

11. CONNECTOR KEEP-OUT ZONE.

12. \triangle SYMBOL WILL BE NEXT TO ANY DIMENSION, VIEW, OR NOTE WHICH HAS BEEN MODIFIED WITH THE CURRENT DRAWING REVISION.

mat'l code		SEE NOTE		tolerances unless otherwise specified		CUSTOMER		www.fciconnect.com	
lir	ecn no.	dr	date	linear	0.X ± 0.5		COPY		title 6P+16S+3ACP R/A STB HEADER
B					0.XX ± 0.25		projection		
					0.XXX ± 0.10				
				angles	0° ± 2°				product family PwrBlade
				dr	RYAN YUAN	12/01/05	size		
				enrg	SALLY LUO	12/02/05	dwg no		sheet 4
				chr	VICTOR LIN	12/01/05	A		51939-214
				appd	JOSEPH HSIA	12/01/05	scale		
sheet index	revision sheet						1:1		

1 | 2

Pro/E

PDM: Rev:B

STATUS: Released

Printed: Dec 20, 2010

A

A

B

B

cage code 2856

4