

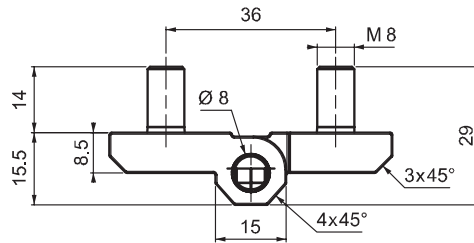
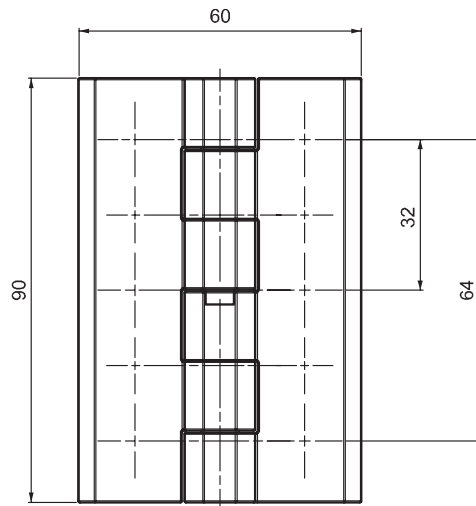
FLAT HINGES

LEAF HINGE

900



LH/RH



- Generally used for plain/flush-mounted doors and insulated panels
- Provides strong fixing by 6 pcs. M8 bolts
- Opening angle 270°

APPLICATIONS

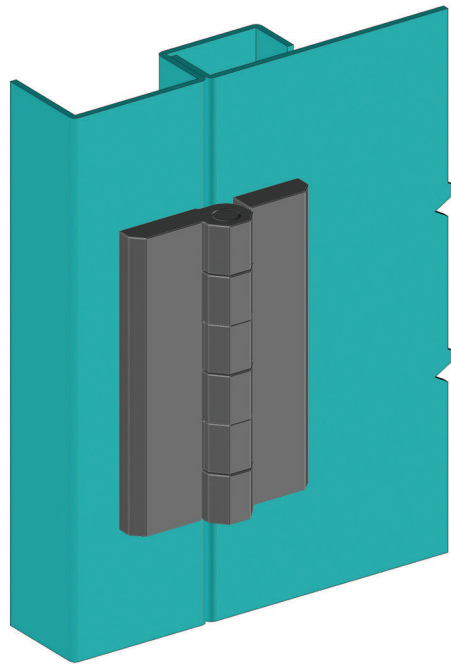
Generators, machinery covers, electric panels

MATERIAL

BODY: Zamak DIN-EN 1774-ZnAl4Cu1
PIN: Stainless Steel
SCREW: Steel

FINISH

Chrome plated or black coated



PRODUCT CODE

900 - M - F
GROUP CODE MATERIAL FINISH

MATERIAL		M	FINISH		F
Zamak		1	Chrome		1
			Black coated		2