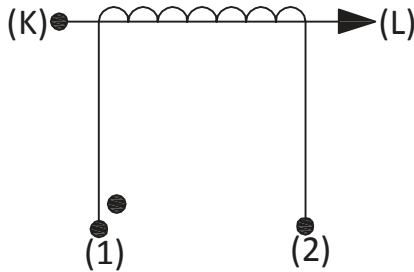


| | |
|-------------------|---------------------|
| Product Type | Current Transformer |
| AMGIS Part Number | CT1030 |
| | |
| | |

SCHEMATIC:



ELECTRICAL SPECIFICATION:

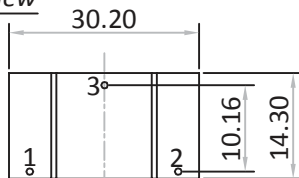
| | |
|--------------------------------|---|
| Rated input current | = 30Amps |
| Primary to Secondary isolation | = 2500VAC |
| Operating Frequency | = 50 / 60 Hz |
| Turns Ratio | = 1 : 1000 |
| DC Resistance | = 48.00 Ω |
| Output Voltage | = 3.0V @ 30A / 100Ω, 0.0900W |
| Io @ Vrms : 4.38V | = 644μArms |
| Ratio Correction factor (RCF*) | = 1.02 @ 10% (Multiply current reading by this factor to compensate for transformer losses) |

| Volt/Amp at rated Ip for different loads | | | |
|--|------|-------|-------|
| 100Ω | 500Ω | 2000Ω | 5000Ω |
| 0.10 | 0.47 | 0.95 | 1.16 |

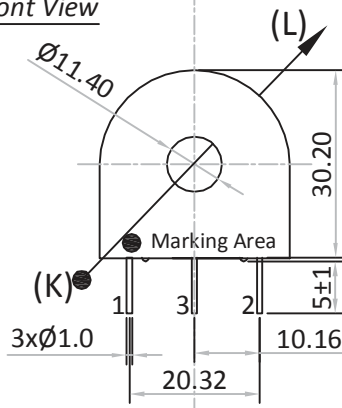
MECHANICAL SPECIFICATION:

OUTPUT RESPONSE vs INPUT CURRENT @ RATED BURDEN :

Pin Side View

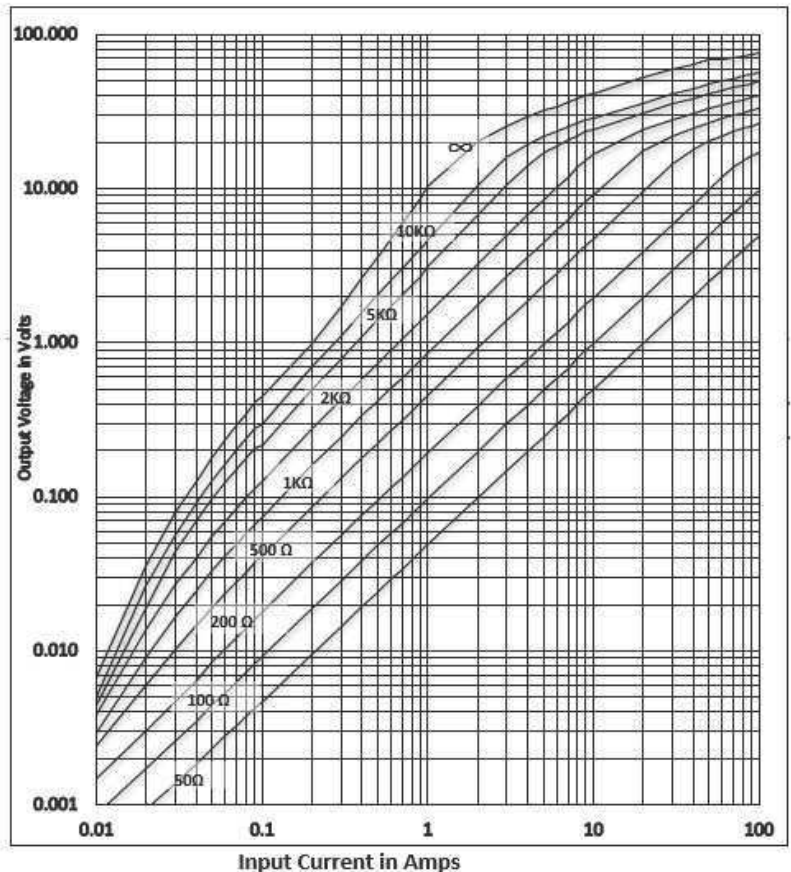


Front View

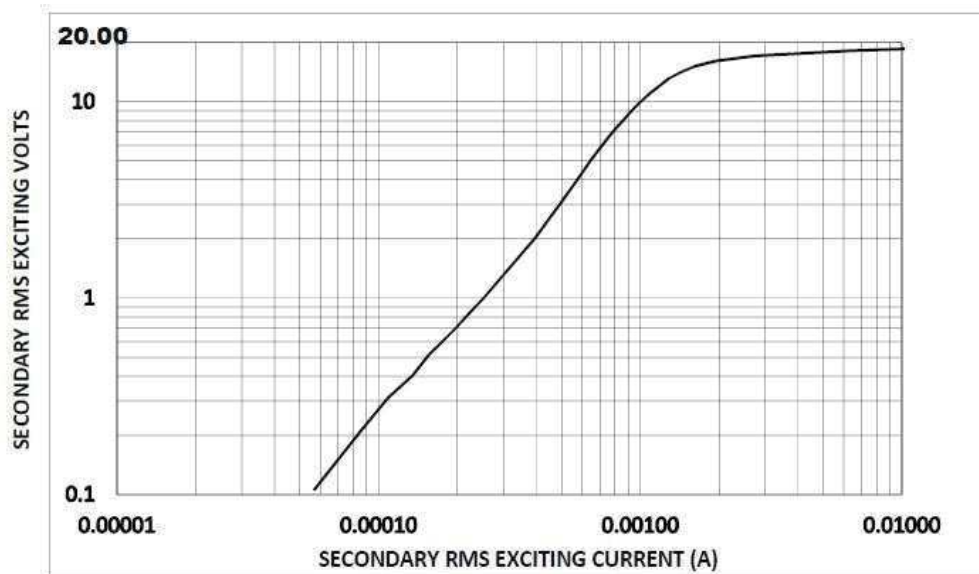


All dimensions are in mm
Linear dimensional tolerance ±0.2mm

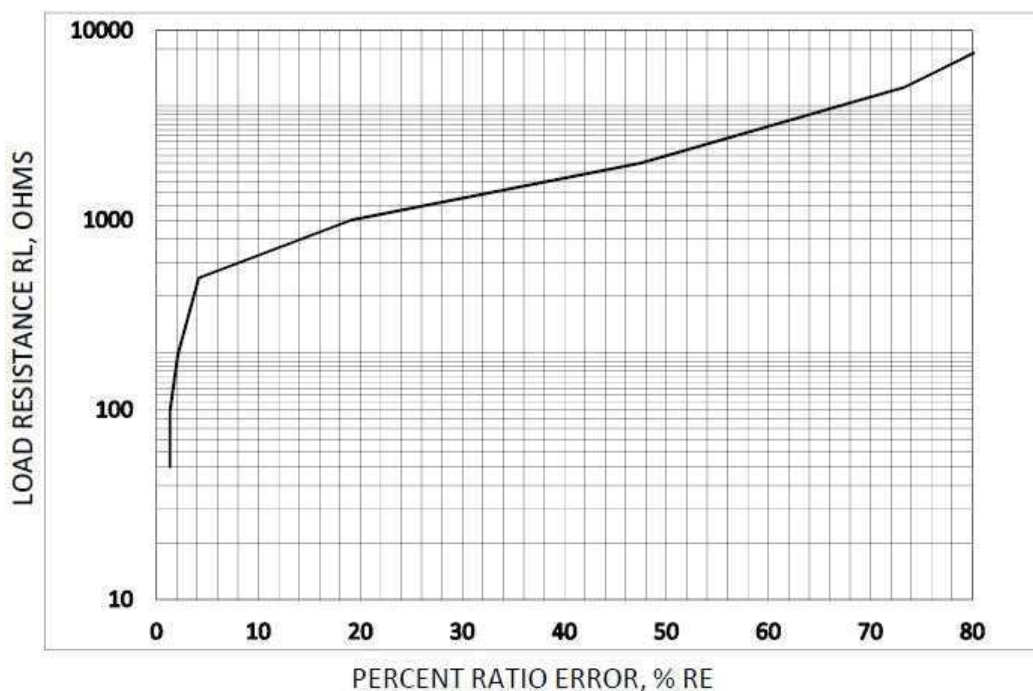
Note : Un-Used pin → #3



TYPICAL EXCITATION CURVE :




RATIO ERROR (%) vs RATED BURDEN @ INPUT CURRENT :



TRAF0 WEIGHT:

Approx. Weight = 0.0355 kg / pc

MARKING INFORMATION:

Amgis
 CT1030
 Yr/Wk code

 Dot mark for Start pin identification

| | | | | |
|-------------------------|-------|-----|-----------|-------------|
| -----Initial Issue----- | 1 | 0 | Balaji. R | 18-Nov'2015 |
| Changes | Issue | Rev | Initial | Date |