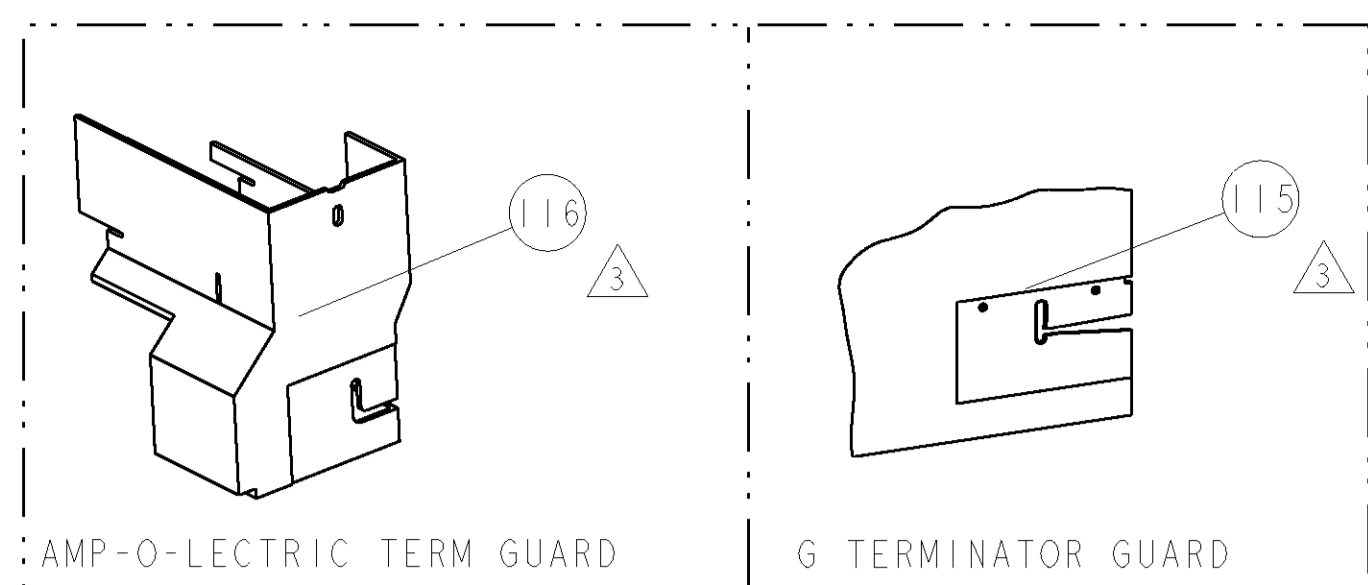


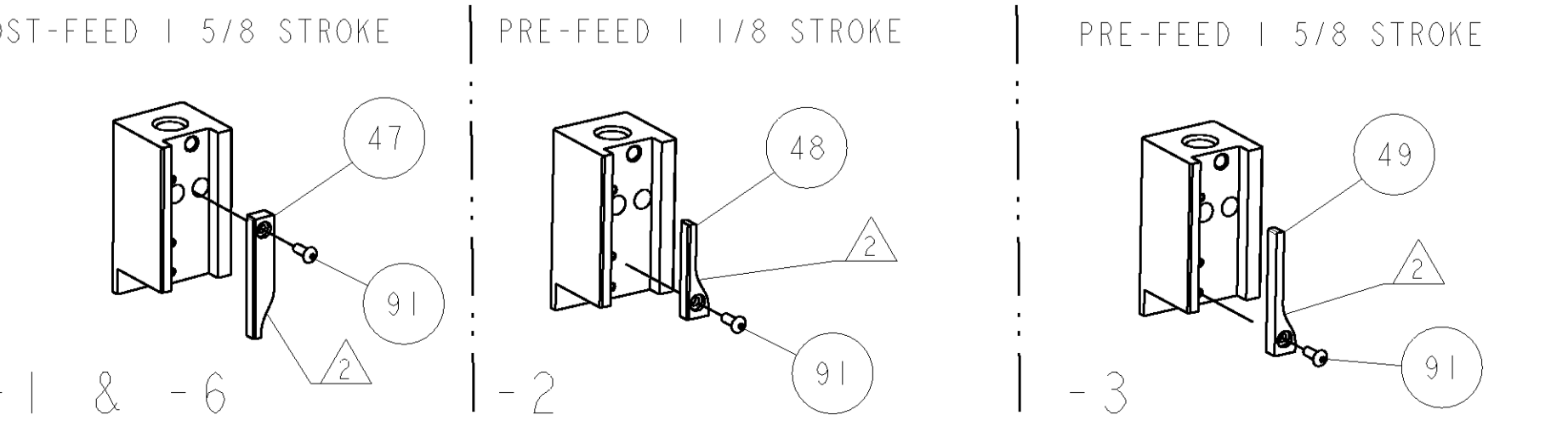
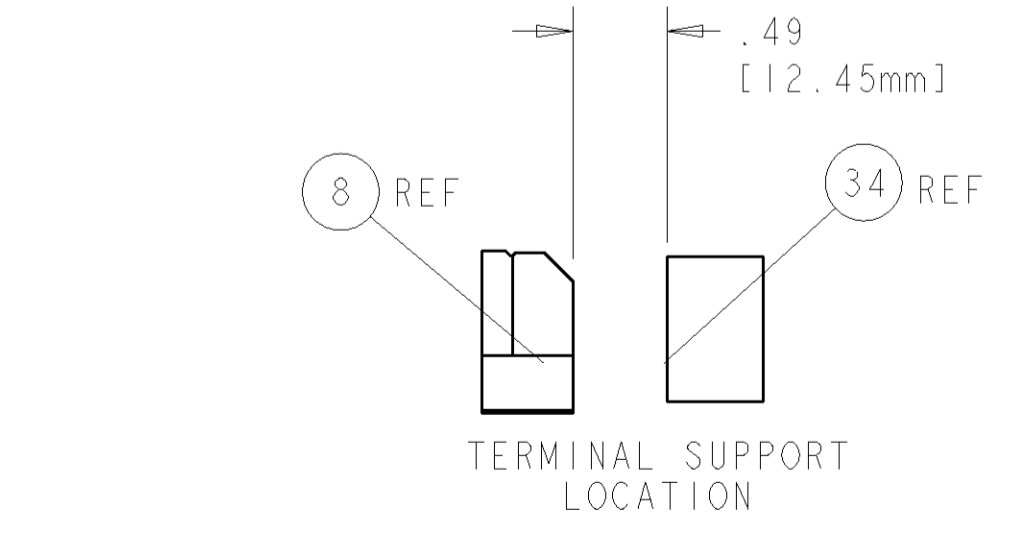
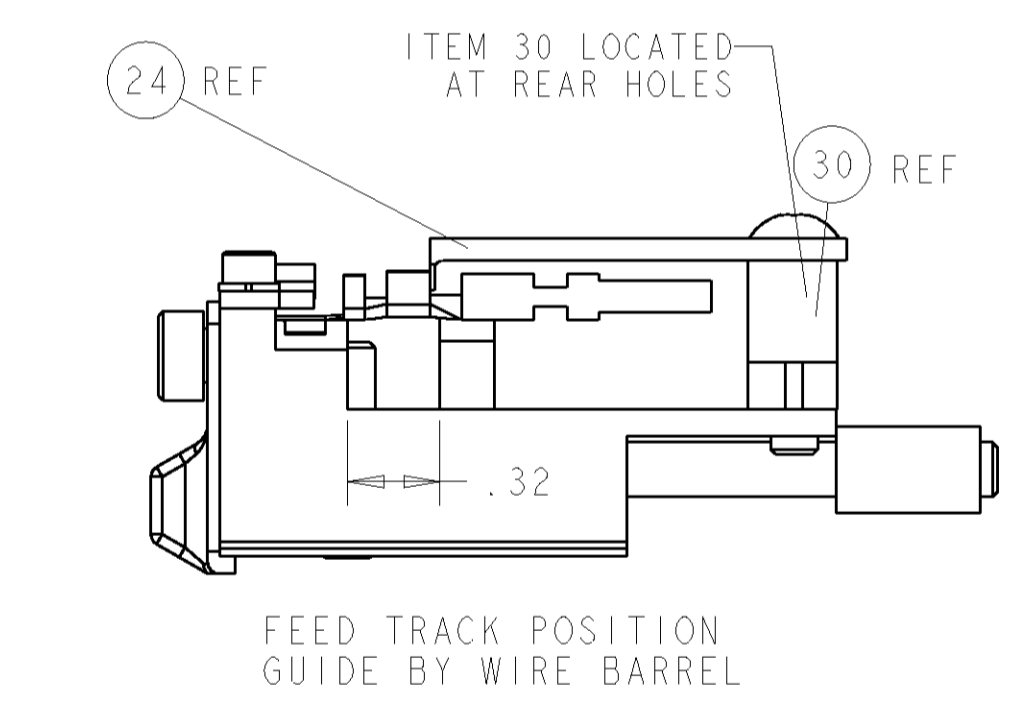
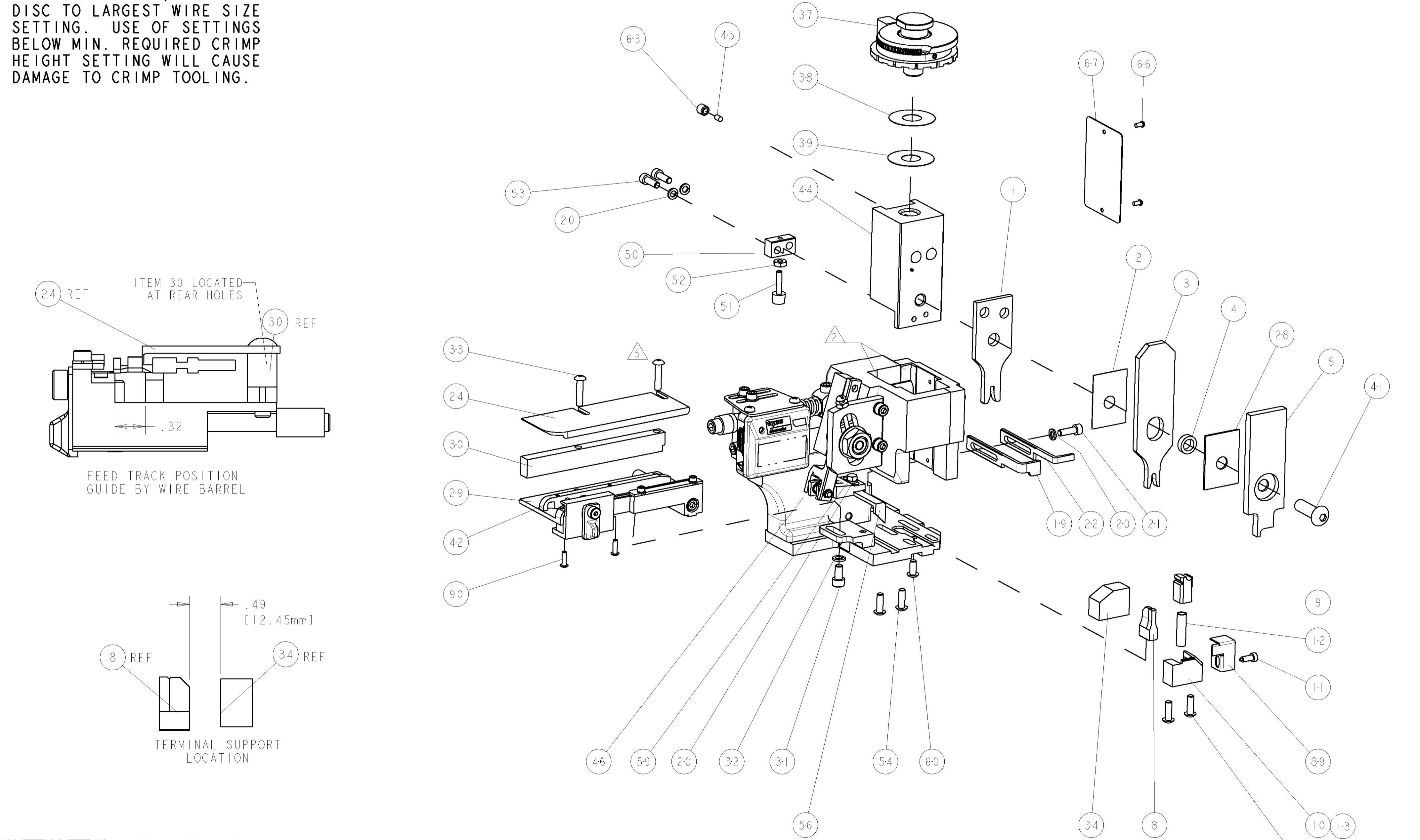
PART NUMBER	REV	FIRST USED	POWER UNIT	FEED TYPE	DESCRIPTION
1855363-1	A	122500-1	LEADMAKER	POST FEED	CUTS CARRIER
1855363-2	A	565435-5	BENCH MODEL K	PRE FEED	CUTS CARRIER
1855363-3	A	354500-1	BENCH MODEL G	PRE FEED	CUTS CARRIER
1855363-6	A	122500-1	LEADMAKER	POST FEED	CONTINUOUS CARRIER
7-1855363-7	A	-	-	-	SPARE PARTS



TE PN		MANF PN		YAZAKI TERMINAL - YAZAKI CRIMP SPECS		REF SETTING
1949595	451411-13-027	7113-2346		CRIMP HEIGHT	WIRE SIZE	B8
-	-	-	-	1.75mm+ .05/- .05 [.069+ .002/- .002]	2.5mm2	C7
-	-	-	-	1.65mm+ .05/- .05 [.065+ .002/- .002]	14AWG	DO
-	-	-	-	1.60mm+ .05/- .05 [.063+ .002/- .002]	1.5mm2	-
-	-	-	-	CRIMP	SIZE	RANGE
-	-	-	-	WIRE	2.36mm [.093]	F
-	-	-	-	INSUL	3.25mm [.128]	O
WIRE STRIP LENGTH	TERM APPL SPEC	FEED	APPLICATOR INSTRUCTIONS	SET UP GAGE		
4.763-5.144	NONE	13.208	408-8040	458637-1		

- △ RECOMMENDED SPARE PARTS
- △ GREASE LIGHTLY
- △ GUARD MUST BE IN PLACE WHEN OPERATING APPLICATOR IN A BENCH MACHINE
- △ YAZAKI RECOMMENDED WIRES SIZES FOR THIS TERMINAL ARE 1.5mm AND 2.5mm. 14AWG WIRE DOES NOT APPEAR ON YAZAKI SPEC TYCO ELECTRONICS CALCULATED CRIMP HEIGHT
- △ CUT TO LENGTH AT ASSEMBLY

*** WARNING**
ON INSTALLATION, SET WIRE DISC TO LARGEST WIRE SIZE SETTING. USE OF SETTINGS BELOW MIN. REQUIRED CRIMP HEIGHT SETTING WILL CAUSE DAMAGE TO CRIMP TOOLING.



QTY	REF	DESCRIPTION	ITEM NO	
1	REF	455749-1	GUARD WINDOW	116
1	REF	679532-1	INSERT, GUARD	115
1	1	1-21002-7	SCR, BTN SKT HD CAP 6-32 X .375	91
2	2	1-21002-4	SCR, BTN SKT HD CAP 4-40 X .375	90
1	1	318563-1	GUARD, FRONT CHIP	89
1	1	4088040	SF APPL INST 408-8040	72
1	1	217238-1	GENERAL INSTRUCTION PKG	71
1	1	461264-5	PLATE, IDENTIFICATION	67
2	2	21017-2	SCREW, DRIVE	66
1	1	21009-2	SCR, SET, SELF LOCKING 1/4-20 X .250	63
1	1	22733-8	SCR, BHSC, SELF-LOCKING, 8-32 X .375	60
1	1	2-22603-0	SCR, HEX HD CAP 8-32 X .312	59
1	1	458537-2	PAWL, FEED	56
4	4	2-21002-2	SCR, BTN SKT HD CAP 8-32 X .500	54
2	2	2-21000-7	SCR, SKT HD CAP 8-32 X .500	53
1	1	21018-5	NUT, HEX, REG 6-32	52
1	1	811242-2	BUMPER, HOLD DOWN	51
1	1	690753-1	SPACER, TONKER	50
1	1	690602-6	CAM, PRE FEED, 1 5/8	49
1	1	690602-5	CAM, PRE FEED, 1 1/8	48
1	1	690501-4	CAM, POST FEED, 1 5/8	47
1	1	459456-1	APPL. BASIC SUB ASSY (SIDE WISE MQCA)	46
1	1	690191-1	PLUG, NYLON	45
1	1	455673-1	RAM, SIDE FEED	44
1	1	189807-3	FENCE	42
1	1	7-21002-9	SCR, BTN SKT HD CAP 5/16-24 X 1.00	41
1	1	690125-1	SHIM SUB-ASSY	39
1	1	469367-1	SHIM	38
1	1	879103-3	FINE ADJUST HEAD ASSEMBLY	37
1	1	3-690786-3	TERMINAL SUPPORT	34
2	2	2-21002-4	SCR, BTN SKT HD CAP 8-32 X .750	33
1	1	21024-5	WASHER, SPRG LOCK, REG NO 10	32
1	1	3-21000-4	SCR, SKT HD CAP 10-32 X .375	31
1	1	1320908-8	SPACER, STRIP GUIDE	30
1	1	1633091-7	ASSEMBLY, STRIP GUIDE	29
1	1	1-455888-0	SPACER, CRIMPER	28
1	1	1320928-5	PLATE, STRIP GUIDE	24
1	1	690472-2	STRIPPER	22
1	1	2-21000-7	SCR, SKT HD CAP 8-32 X .500	21
4	4	21024-4	WASHER, SPRG LOCK, REG NO 8	20
1	1	691353-1	STRIPPER	19
1	1	679625-1	SHEAR HOLDER, FRONT (NO CUT)	13
1	1	3-22280-3	SPRING, COMPRESSION	12
1	1	1-690461-7	STOP, SHEAR	11
1	1	690459-1	SHEAR HOLDER, FRONT	10
1	1	462006-1	FLOATING SHEAR, FRONT	9
1	1	5-1633535-6	ANVIL, COMBINATION	8
-	-	-	-	7
-	-	-	-	6
1	1	2-455889-0	DEPRESSOR, SHEAR	5
1	1	1-238011-9	BLOCK, CRIMPER SPACER	4
1	1	1633589-9	CRIMPER, INSUL O	3
1	1	455888-2	SPACER, CRIMPER	2
1	1	6-1673600-3	CRIMPER, WIRE	1

LOC	DIST	REV	DATE	BY	CHK	APPV
A	66	A1	15APRIL2008	CMR	GB	

LOC	DIST	REV	DATE	BY	CHK	APPV
A	66	A1	02JAN2008	CMR	GB	

INCHES	TOLERANCES UNLESS OTHERWISE SPECIFIED:
0 PLC	± .001
1 PLC	± .001
2 PLC	± .001
3 PLC	± .001
4 PLC	± .001
ANGLES	± .0001

DESCRIPTION	SCALE	SHEET	OF	REV
FINE ADJUST SIDE FEED HDM APPLICATOR	3:5	1	1	A1

CUSTOMER VIEWABLE ASSEMBLY