

PSD-S AE SC1-2 105DB

Siren element, alternating, 24 V DC,
max. 105 dB(A)

Data sheet
7943_00

© PHOENIX CONTACT - 04/2009



1 Description

This audible signal element is designed as a component of a modular signal tower.

According to your requirements, a signal tower may comprise any combination of up to five signal elements. You may use up to five optical signal elements or up to four optical and one audible signal element.

An audible signal element can be used as top element only.

A bayonet locking system establishes the mechanical and electrical connection between the elements.

Connection elements with spring-cage or screw connection can be used for electrical connection of the signal tower.

Mounting elements for base or tube mounting can be used to mount the signal tower.

Features

- Siren element for 24 V DC
- Alternating continuous tone
- Maximum volume of 105 dB(A)
- Degree of protection: IP40, when mounted



Make sure you always use the latest documentation.

It can be downloaded at <http://www.phoenixcontact.net/download>.



This data sheet is valid for all products listed on the following page:

Table of contents

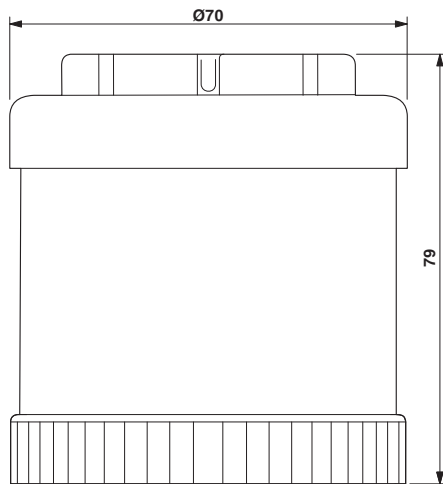
Description	1
Ordering data	2
Technical data	2
Example of a signal tower	4
Assembly notes for a signal tower	4
Assembling the individual elements	4
Example for signal tower dimensions	5

2 Ordering data

Description	Type	Order No.	Pcs. / Pkt.
Siren element, alternating, 24 V DC, max. 105 dB(A), black	PSD-S AE SC1-2 105DB	2700139	1

3 Technical data

Dimensions (in mm)



General data

Diameter	70.00 mm
Height	79.00 mm
Material	Polycarbonate PC
Color	black
Weight	106 g
Ambient temperature (operation)	-20 °C ... 50 °C

General data

Degree of protection IP40, when mounted

Mounting position Any

Electrical data

Input voltage 24 V DC

Inrush current Max. 500 mA

Current consumption 100 mA

Audible signal type Continuous tone, alternating

Tone frequency approx. 2.5 kHz / 3.5 kHz

Volume 105 dB(A)

Service life, electrical min. 5,000 h

Operating time 100 %

Approvals / conformities

Conformance with EMC directive 2004/108/EC

For the latest approvals, please visit <http://www.phoenixcontact.net/catalog>.

4 Example of a signal tower

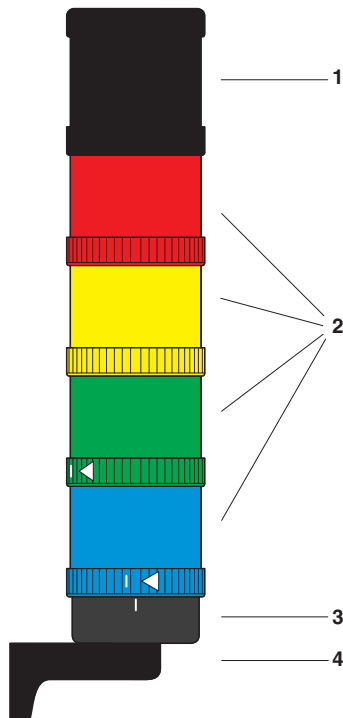


Figure 1 Example of a signal tower

Key:

- 1 Audible signal element
- 2 Optical signal element
- 3 Connection element
- 4 Assembly element

5 Assembly notes for a signal tower

- You may use up to five signal elements in a signal tower.
- Use only one audible element in a signal tower and position this element on top.
- When closing the bayonet locking system, observe the markings (see "Assembling the individual elements").

6 Assembling the individual elements

The assembly of an audible and an optical signal element is identical. The figure illustrates the assembly of two audible elements.

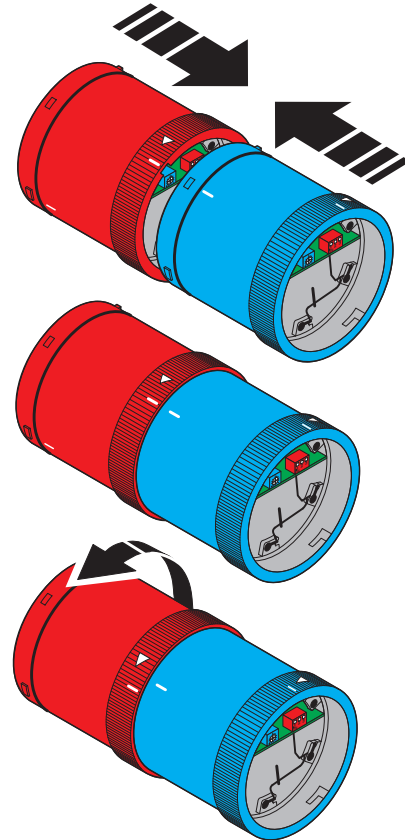


Figure 2 Assembling the individual elements

- Select the elements for your application.
- Connect the elements to be assembled so that the markings are aligned.
- Turn the upper element in the direction of the arrow.

7 Example for signal tower dimensions

The following figure shows the dimensions of a typical signal tower.

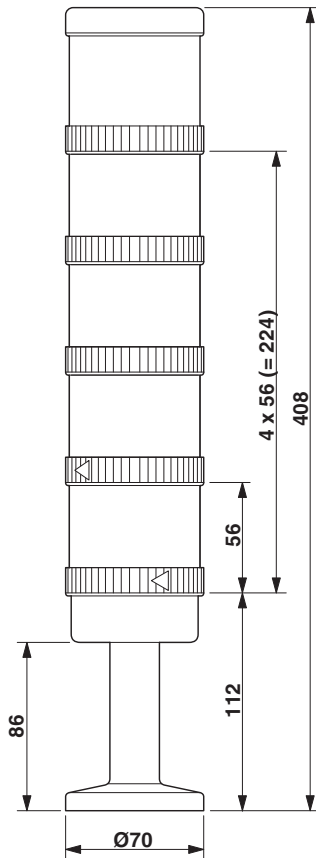


Figure 3 Dimensions of a signal tower (example)