

F

E

D

C

B

A

F

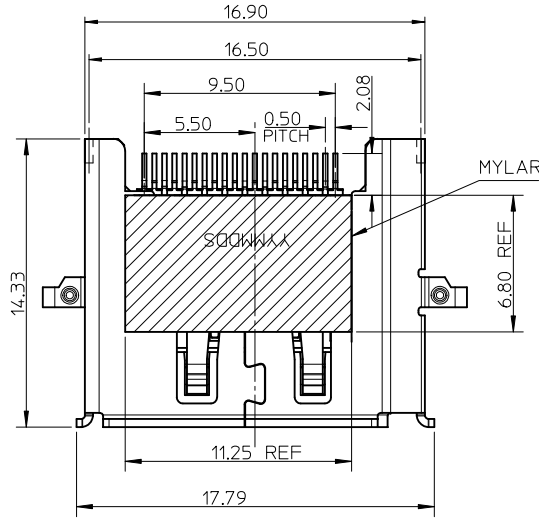
E

D

C

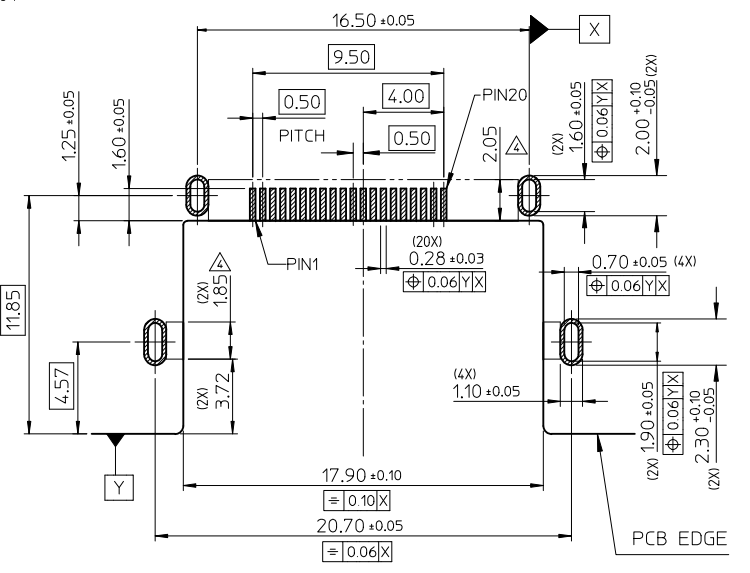
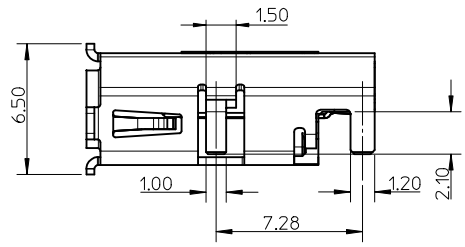
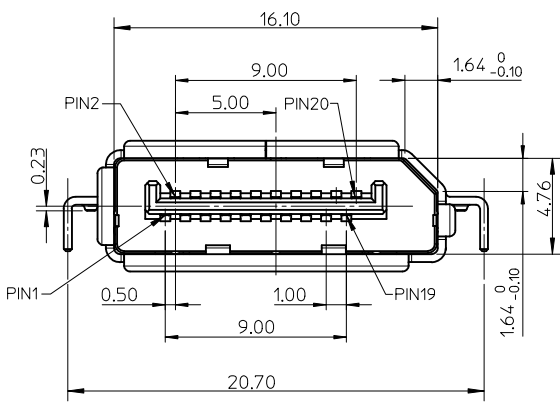
B

A

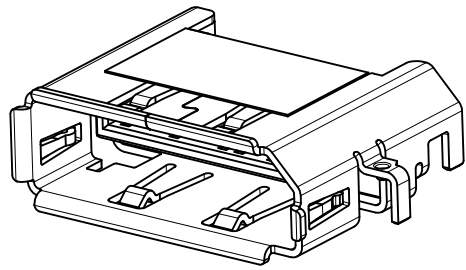


NOTES:

1. MATERIAL:
HOUSING: HGHI TEMPERATURE THERMOPLASTIC, BLACK, UL94V-0.
TERMINAL: COPPER ALLOY.
SHELL: COPPER ALLOY.
2. PLATING:
TERMINAL: CONTACT AREA 0.76 MICROMETER GOLD PLATING, SOLDER TAIL 1-3 MICROMETER TIN ALLOY UNDER PLATE 1-3 MICROMETER NICKEL PLATING OVERALL.
SHELL: 1.27-2.54 MICROMETER SOLDERABLE NICKEL PLATING OVERALL.
3. SOLDER TAIL COPLANARITY 0.10 MAX.
- △ KEEPOUT AREA (NO TRACE HERE).
5. PRODUCT SPEC REFER TO PS-47272-001
6. PACKAGE SPEC REFER TO PK-47644-001



RECOMMENDED PCB LAYOUT (THICKNESS=1.2MM ± 0.05MM)



REVISED EC NO: SH2011-0281 DRAWN: RZHANG CHKD: APPR: X.J.SONG A2	REV DESCRIPTION 2011/04/18 2011/08/22	QUALITY SYMBOLS	GENERAL TOLERANCES (UNLESS SPECIFIED)		DIMENSION STYLE MM ONLY		SCALE 1:1	DESIGN UNITS METRIC	THIRD ANGLE PROJECTION		
		▽ _A =0	mm	INCH	DRAWN BY HHE	DATE 2008/08/18	TITLE 0.23MM CENTER HIGHT SINK REVERSE TYPE DISPLAYPORT HEADER ASSEMBLY				
		▽ _C =0	4 PLACES ± --- ± ---	3 PLACES ± --- ± ---	CHECKED BY RZHANG	DATE 2008/08/18	MOLEX INCORPORATED				
		▽ _P =0	2 PLACES ± 0.25 ± ---	1 PLACE ± 0.25 ± ---	APPROVED BY RZHANG	DATE 2010/03/26	DOCUMENT NO. SD-47644-002				
ANGULAR ± 3 °			DRAFT WHERE APPLICABLE MUST REMAIN WITHIN DIMENSIONS		MATERIAL NO. 476441001		SHEET NO. 1 OF 1		THIS DRAWING CONTAINS INFORMATION THAT IS PROPRIETARY TO MOLEX INCORPORATED AND SHOULD NOT BE USED WITHOUT WRITTEN PERMISSION		