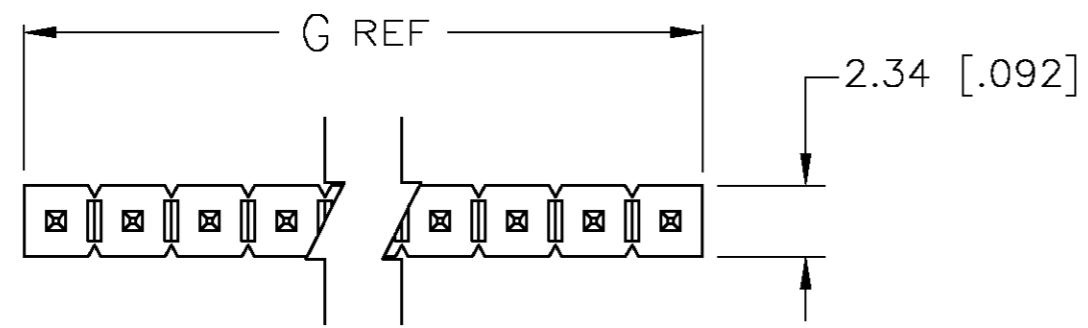
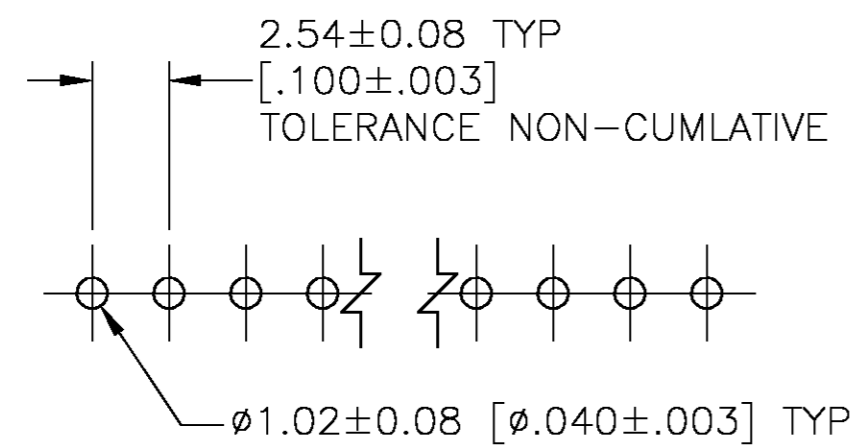
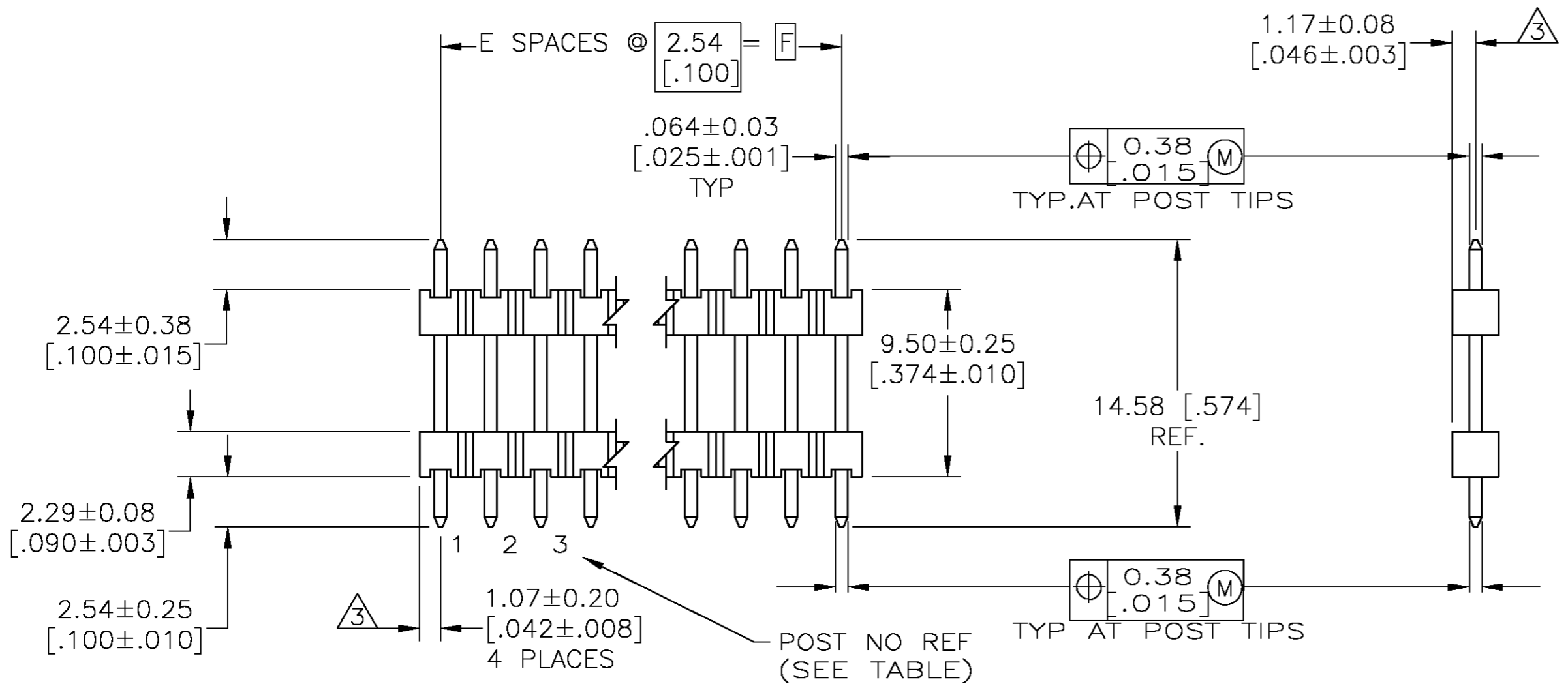


THIS DRAWING IS UNPUBLISHED. RELEASED FOR PUBLICATION  
 © COPYRIGHT BY TYCO ELECTRONICS CORPORATION. ALL RIGHTS RESERVED.

LOC		DIST		REVISIONS			
P	LTR	DESCRIPTION	DATE	DWN	APVD		
AD	00	F	REV PER 0G3C-0058-04	06APR04	MB	JG	



1. ASSEMBLY MAY BE BROKEN TO THE DESIRED NUMBER OF POSITIONS
2. TRUE POSITION TOLERANCE OF THE POST TIPS APPLIES WHEN THE HEADER IS HELD FLAT AGAINST THE PRINTED CIRCUIT BOARD
3. THE NOTED DIMENSIONS APPLY AT THE INTERSECTION OF THE POST AND HOUSING
4. HOUSING: LCP, COLOR-BLACK.
5. FINISH: 0.000254-0.00508 [.000100-.000200] MIN MATTE TIN-LEAD OVER 0.00127 [.000050] MIN NICKEL ENTIRE POST.



RECOMMENDED HOLE LAYOUT

19.91 [.784]	17.78 [.700]	7	-	8	147285-2
19.91 [.784]	17.78 [.700]	7	1,2,7,8	8	147285-1
G	F	E	HOLDDOWN POST CONFIG LOCATION	NO. OF POSITIONS	PART NUMBER

THIS DRAWING IS A CONTROLLED DOCUMENT.		DWN 26JUL00 B. HAYMAKER	Tyco Electronics Corporation Harrisburg, PA 17105		
DIMENSIONS: MM		CHK 23JUN99 J. GESFORD	NAME		
TOLERANCES UNLESS OTHERWISE SPECIFIED:		APVD 23JUN99 J. GESFORD	PRODUCT SPEC		
0 PLC ± -		APPLICATION SPEC			
1 PLC ± -		WEIGHT			
2 PLC ± -		SIZE A2			
3 PLC ± 0.13[.005]		CAGE CODE 00779			
4 PLC ± -		DRAWING NO C=147285			
ANGLES ± -		RESTRICTED TO			
FINISH		SCALE 4:1 SHEET 1 OF 1 REV F			
MATERIAL		CUSTOMER DRAWING			