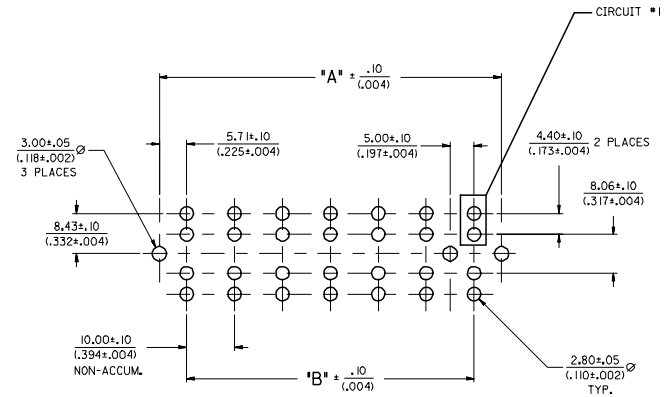
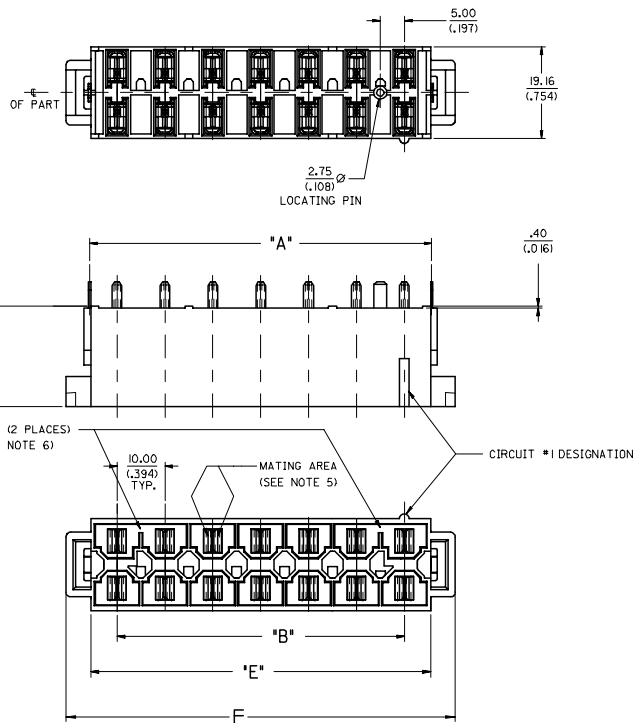


MATERIAL NUMBER	CIRCUITS	DIM. 'A'	DIM. 'B'	DIM. 'C'	DIM. 'D'	DIM. 'E'	DIM. 'F'	PCB THICKNESS	POLARIZING SLOTS	
									PRESENT	QTY.
44537-1001	6	31.41/(1.237)	20.00/(.787)	8.30/(.328)	3.40/(.134)	30.90/(1.217)	41.3/(1.63)	6.00/(.236) MUST BE MODIFIED TO ACCEPT 3.4mm CLIP	YES	1
44537-1002	8	41.41/(1.630)	30.00/(1.181)	8.30/(.328)	3.40/(.134)	40.90/(1.610)	51.3/(2.01)		YES	2
44537-1003	10	51.41/(2.024)	40.00/(1.575)	8.30/(.328)	3.40/(.134)	50.90/(2.004)	61.3/(2.41)		YES	2
44537-1004	12	61.41/(2.418)	50.00/(1.969)	8.30/(.328)	3.40/(.134)	60.90/(2.398)	71.3/(2.81)		YES	2
44537-1005	14	71.41/(2.811)	60.00/(2.362)	8.30/(.328)	3.40/(.134)	70.90/(2.791)	81.3/(3.20)		YES	2

**NOTES:**

- MATERIALS:  
HOUSING: 30% GLASS FILLED NYLON 4/6, U.L. 94V-0, COLOR: BLACK.  
TERMINAL: ALLOY 151 PLATING: TIN-LEAD OVER NICKEL.
- PRODUCT SPEC.: PSX-42815-0001
- USES STANDARD 42874 MINI-FIT SR. HEADER TERMINALS.
- PART MATES WITH MOLEX RECEPTACLE 43914.
- FOR HIGH VIBRATION APPLICATIONS, MOLEX STRONGLY RECOMMENDS THE USE OF NYE LUBRICANT NYOGEL 760G ON THE MATING SURFACES OF THE TERMINALS.
- POLARIZING SLOTS TO BE LOCATED BETWEEN CIRCUITS ON EITHER END OF HOUSING OF THE CIRCUIT 1 ROW, AS SHOWN.  
EXCEPTION: THE 6 CIRCUIT HOUSING WILL HAVE A SINGLE SLOT ON THE CIRCUIT 1 END ONLY.



**RECOMMENDED P.C. BOARD PLATED-THRU HOLE LAYOUT**

(14 CIRCUIT LAYOUT SHOWN)

ADDED DIM. F EC NO.: UCP2006-1765 DRAWN: JCOMERL 2006/01/31 CHKD: JCOMERL 2006/01/31 APPR: JCOMERL 2006/02/06	QUALITY SYMBOLS	GENERAL TOLERANCES (UNLESS SPECIFIED)	DIMENSION STYLE	SCALE	DESIGN UNITS	THIRD ANGLE PROJECTION
	$\nabla=0$ $\nabla=0$	mm INCH 4 PLACES ± --- ± --- 3 PLACES ± --- ± .008 2 PLACES ± 0.20 ± --- 1 PLACE ± --- ± --- ANGULAR ± °	MM/IN	2:1	METRIC	<input checked="" type="checkbox"/> THIRD ANGLE PROJECTION
	DESCRIPTION	DRAFT WHERE APPLICABLE MUST REMAIN WITHIN DIMENSIONS	SEE CHART	DRAWN BY: JCOMERL DATE: 8/10/99 CHECKED BY: JCOMERL DATE: 8/10/99 APPROVED BY: JCOMERL DATE: 8/10/99	TITLE	VERTICAL HEADER DUAL ROW, 6-14 CIRCUIT MINI-FIT SR.
	REV	MATERIAL NO.	SD-44537-001	DOCUMENT NO.	MOLEX INCORPORATED	SHEET NO. 1 OF 1