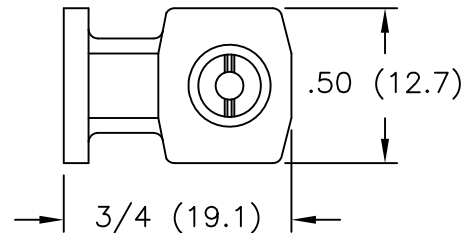
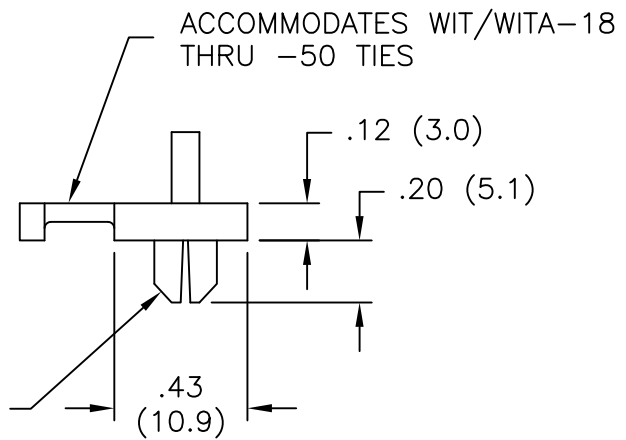


TYPICAL APPLICATION

TO FIT IN A $.196 \pm .002$
 (5.0 ± 0.05) DIA. HOLE,
 $.030 - .125$ $(0.8 - 3.2)$ PANEL THCK.



NOTES:

1. MATERIAL: NYLON 6/6, (RMS-01).
2. COLOR: YELLOW.
 COLOR BLACK AVAILABLE BY SPECIAL ORDER.
 TO ORDER, ADD "BK" TO THE END OF PART NO.

F	SEE CO 200570 FOR CHANGES	SK 08.04.10	TITLE: WIRE TIE HOLDER						DWG IN IN (MM)	
E	SEE ECN #1188 FOR CHANGES	SK 06.29.06								
D	SEE ECN #1124 FOR CHANGES	SK 01.24.06								
C	UPDATED NOTES AND CHANGED FILE NO.	SM 06.12.02	TOLERANCES UNLESS NOTED	FILE # FTH-22	DWN: P.B.	APP:	FINAL			
B	CABLE TIE NOTE UPDATED TO GRAPH	JL 01.04.00	.XX=±.010 .XXX=±.005 FRAC=±1/64 ANG=±1°	MAT'L: SEE NOTES	DT: 06-09-94	DT:	PART #	PRINT TYPE		
A	NOTE 3 ADDED, DIM .196 WAS .202, DIM 3/4 WAS .74, DIM .06 WAS .12, DIM .12 ADDED ISO. ADDED; P/N FTH-22-01 WAS FTH-22	PB 08.01.94		RE: RICHCO, INC.	RICHCO INC. PO BOX 804238, CHICAGO, 60680 (773) 539-4060		FTH-22-01	CA		
REV	DESCRIPTION	ENGR DATE								