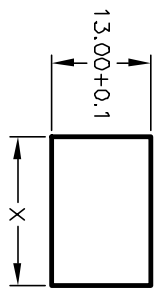
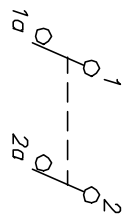


RECOMMENDED P.C.B. HOLES

PANEL THICKNESS	X dimension
0.75-1.25 [.030-.049]	19.2-02 [.7561]
1.25-2.0 [.049-.079]	19.4-02 [.7641]
2.0-3.0 [.079-.118]	19.8-02 [.7801]



PANEL CUTOUT
NOT TO SCALE



CIRCUIT: DPST

NOTES:

1. ALL DIMENSIONS IN MM [INCH]
2. GENERAL TOLERANCE: X.X=±0.4
X.XX=±0.25
3. RATING:
6A @250VAC;9A @125VAC (UL, CSA, VDE)
4(1)A @250VAC
4. MATERIAL:
CONTACT SURFACE: Coin Silver, Silver Plate
TERMINAL: Copper Alloy w/ Silver Plate.
5. CONTACT RESISTANCE: 20mILLIOHMS TYP. INITIAL
6. INSULATION RESISTANCE: 1000MegOHMS
7. DIELECTRIC STRENGTH:
>1500V RMS min. @SEA LEVEL
>3000V RMS @SEA LEVEL
8. MECHANICAL LIFE: 50,000 CYCLES.
9. ELECTRICAL LIFE: 10,000 CYCLES.

E-SWITCH®

REV.	ECN No.	ADD NOTE 5, REVISED MARKING	DESCRIPTION	DATE	CHKD	TITLE	SCALE	DATE	DR	DWG	REV
E	11330			10/3/01	CJB	R1973B BLK BLK ILD (LEFT ANGLE)	1.5:1	2/20/01	CB	M400018	E
<p>THE INFORMATION CONTAINED IN THIS DOCUMENT IS PROPRIETARY TO E-SWITCH AND IS NOT TO BE COPIED OR TRANSFERRED</p>											