

### Introduction

The M24LR-DISCOVERY kit helps users to evaluate the M24LRXX-E Dual Interface EEPROM that features an energy harvesting analog output, as well as a user-configurable digital output.

The M24LR-DISCOVERY kit is delivered with a battery-less M24LR board that can be powered by RFID readers or NFC phones supporting the ISO/IEC15693 protocol. It is based on an M24LR04E-R I<sup>2</sup>C - ISO/IEC15693 Dual Interface EEPROM, an 8-bit STM8L152C6T6 ultralow power microcontroller, and includes an STTS751 temperature sensor, a 24-segment LCD, and 2 push buttons.

The M24LR-DISCOVERY kit also comes with an USB RF transceiver demonstration board that includes the CR95HF 13.56-MHz multi-protocol contactless transceiver. It is based on a 32-bit, STM32F103CBT6 performance line microcontroller and is connected to a computer host via its USB connector.

Figure 1. M24LR evaluation board

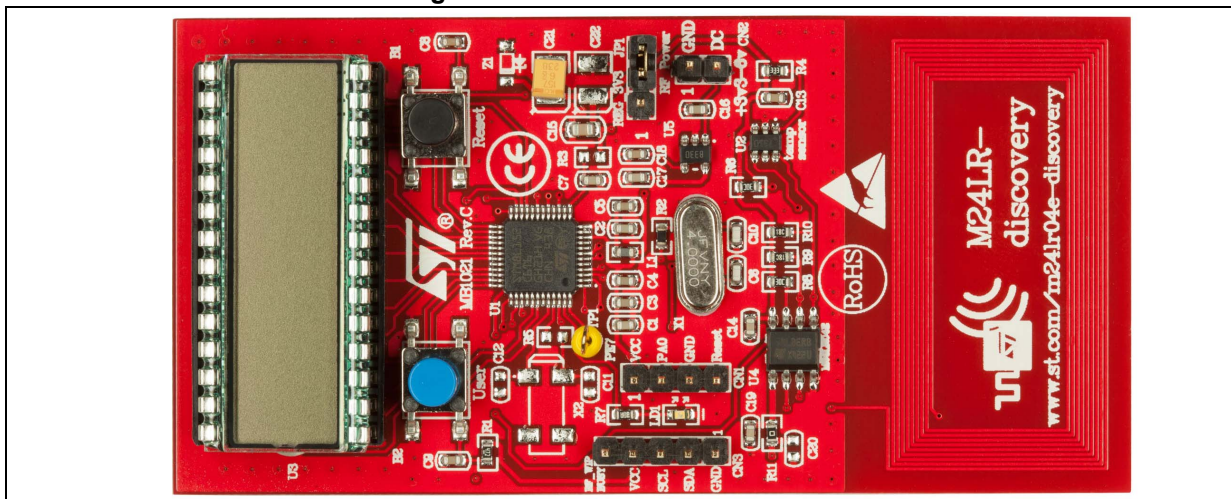
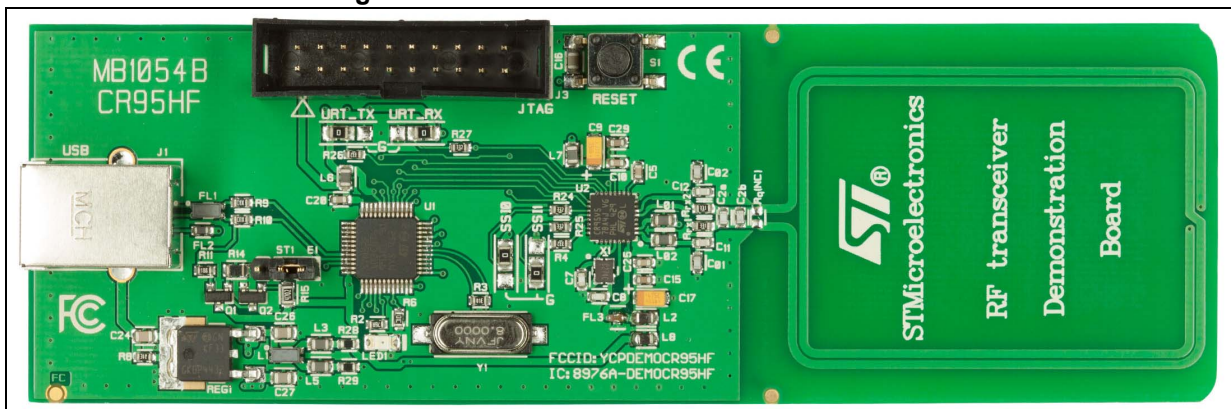


Figure 2. RF transceiver demonstration board



# Contents

- 1 Quick start ..... 5**
  - 1.1 Getting started with the M24LR04E Dual Interface EEPROM ..... 5
  - 1.2 Using the M24LR board with Android NFC phones ..... 6
  - 1.3 System requirements ..... 6
  - 1.4 Development toolchain ..... 6
  
- 2 Features ..... 7**
  
- 3 Hardware and layout description ..... 8**
  - 3.1 M24LR board description ..... 8
  - 3.2 M24LR board power selection ..... 9
  - 3.3 RF transceiver board description ..... 11
  - 3.4 RF transceiver demonstration board powering and startup ..... 11
  - 3.5 Program/debug the M24LR board ..... 12
  - 3.6 Program/debug the RF transceiver demo board ..... 12
  
- 4 Federal Communications Commission (FCC) and Industry Canada (IC) compliance statements ..... 13**
  - 4.1 FCC Compliance Statement ..... 13
    - 4.1.1 Part 15.19 ..... 13
    - 4.1.2 Part 15.21 ..... 13
    - 4.1.3 FCC ID ..... 13
  - 4.2 IC Compliance Statement ..... 13
    - 4.2.1 Compliance Statement ..... 13
    - 4.2.2 Déclaration de conformité ..... 13
    - 4.2.3 IC ID ..... 13
  
- 5 Electrical schematic diagrams ..... 14**
  
- 6 Revision history ..... 17**

## List of tables

Table 1.	Available user modes . . . . .	5
Table 2.	M24LR board programming and debug connector . . . . .	12
Table 3.	Document revision history . . . . .	17

## List of figures

Figure 1. M24LR evaluation board. . . . . 1  
Figure 2. RF transceiver demonstration board . . . . . 1  
Figure 3. M24LR board layout . . . . . 8  
Figure 4. Jumper JP1 set in RF power position . . . . . 9  
Figure 5. Jumper JP1 in “REG\_3V3” position and external power connection . . . . . 9  
Figure 6. External antenna connection with voltage regulator bypass. . . . . 10  
Figure 7. External antenna connection using M24LR board voltage regulator . . . . . 10  
Figure 8. RF transceiver board layout (top and bottom) . . . . . 11  
Figure 9. M24LR board schematics . . . . . 14  
Figure 10. RF transceiver demonstration board schematics (STM32 connections) . . . . . 15  
Figure 11. RF transceiver demonstration board schematics (CR95HF connections) . . . . . 16

# 1 Quick start

The M24LR-DISCOVERY kit is a low-cost and ready-to-use development kit used to evaluate the functions and performance of the M24LR Dual Interface EEPROM family and its energy harvesting capability.

For more information on the M24LR-DISCOVERY kit and associated demonstration software, please visit dedicated webpages on [www.st.com](http://www.st.com).

## 1.1 Getting started with the M24LR04E Dual Interface EEPROM

1. On the M24LR board, ensure that a jumper is placed on connector JP1 in the RF power position (jumper on the right side as shown in [Figure 4](#)).
2. Download and install the M24LR/CR95 application software setup file [STSW-M24LR011] available in dedicated webpages on [www.st.com](http://www.st.com).
3. Connect the RF transceiver demo board to a PC with a USB cable.
4. Launch setup.exe, and select **CR95HF Demo Kit**. Then, open the **Demo NDEF messages** menu and select **Show Demo NDEF & Energy Harvesting**.
5. Place the M24LR board antenna close to the RF transceiver demo board antenna.
6. The M24LR board starts in Message Display mode (The “M24LR04E-DISCOVERY” message scrolls across the screen from right to left).  
You can read the current NDEF message stored in the M24LR04E-R by clicking the **Read NDEF message** button of the PC software.  
You can also write an new NDEF message: it will be automatically displayed on the M24LR board LCD screen after programming.
7. To change the user mode, press push button B2 (blue button on the left side of the board). [Table 1](#) lists the user modes available.

**Table 1. Available user modes**

Mode	Description
1	Displays the NDEF text message stored in the M24LR04E Dual Interface EEPROM.
2	Displays the voltage powering the M24LR board.
3	Displays the ambient temperature, measured using the temperature sensor.

To study or modify the M24LR board application project related to this demo, please visit dedicated webpages on [www.st.com](http://www.st.com).

## 1.2 Using the M24LR board with Android NFC phones

1. Enable NFC communication on your phone (Settings >Wireless and Networks>NFC).
2. Download the NfcV-Reader Application from Google Play Store.
3. Launch the NfcV-Reader application.
4. Place the phone's NFC antenna close to the M24LR board antenna.

The phone powers the M24LR board.

The text message can be changed in the M24LR04E using the NFC phone (select **NDEF function** in the NfcV-Reader application and open the **Write NDEF message** menu).

Please note that performance may vary depending on the NFC phone and its RF management system.

## 1.3 System requirements

- Windows® PC (XP or Vista)
- Two USB cables

## 1.4 Development toolchain

- Cosmic CXSTM8 compiler
- STMicroelectronics ST Visual Develop (STVD) integrated development environment
- STMicroelectronics STLINK/V2 in-circuit debugger and programmer

## 2 Features

The M24LR-DISCOVERY kit includes M24LR board and the RF transceiver board which offer the following features.

### M24LR board

- M24LR04E-R, a 4-Kbit EEPROM with an I<sup>2</sup>C-ISO/IEC 15693 dual interface and an energy harvesting analog output (Vout pin) and a user-configurable digital output (RF Write-in-progress or Busy pin) in an SO8N package
- 9-turns, 13.56-MHz etched antenna (20mm x 40mm) for RF powering and communication
- STM8L152C6T6, 8-bit ultralow power microcontroller with up to 32 Kbytes of Flash memory, 2 Kbytes of RAM, and 1 Kbyte of Data EEPROM in a 48-pin LQFP package
- STTS751 I<sup>2</sup>C low power temperature sensor
- 28-pin LCD on DIP24 socket (24 segments, 4 commons)
- Two push buttons (User and Reset)
- HC-49S-C20SSA, a 4-MHz crystal oscillator (not used in demonstration firmware)
- 4-pin connector (CN1) for STM8L programming and debug (SWIM)
- 2-pin connector (CN2) for external power supply source (3 to 6V)
- 5-pin connector (CN3) for M24LR04E-R and I<sup>2</sup>C bus probing
- 3-pin switch (JP1) to select M24LR board power source (M24LR04E Vout pin or external)

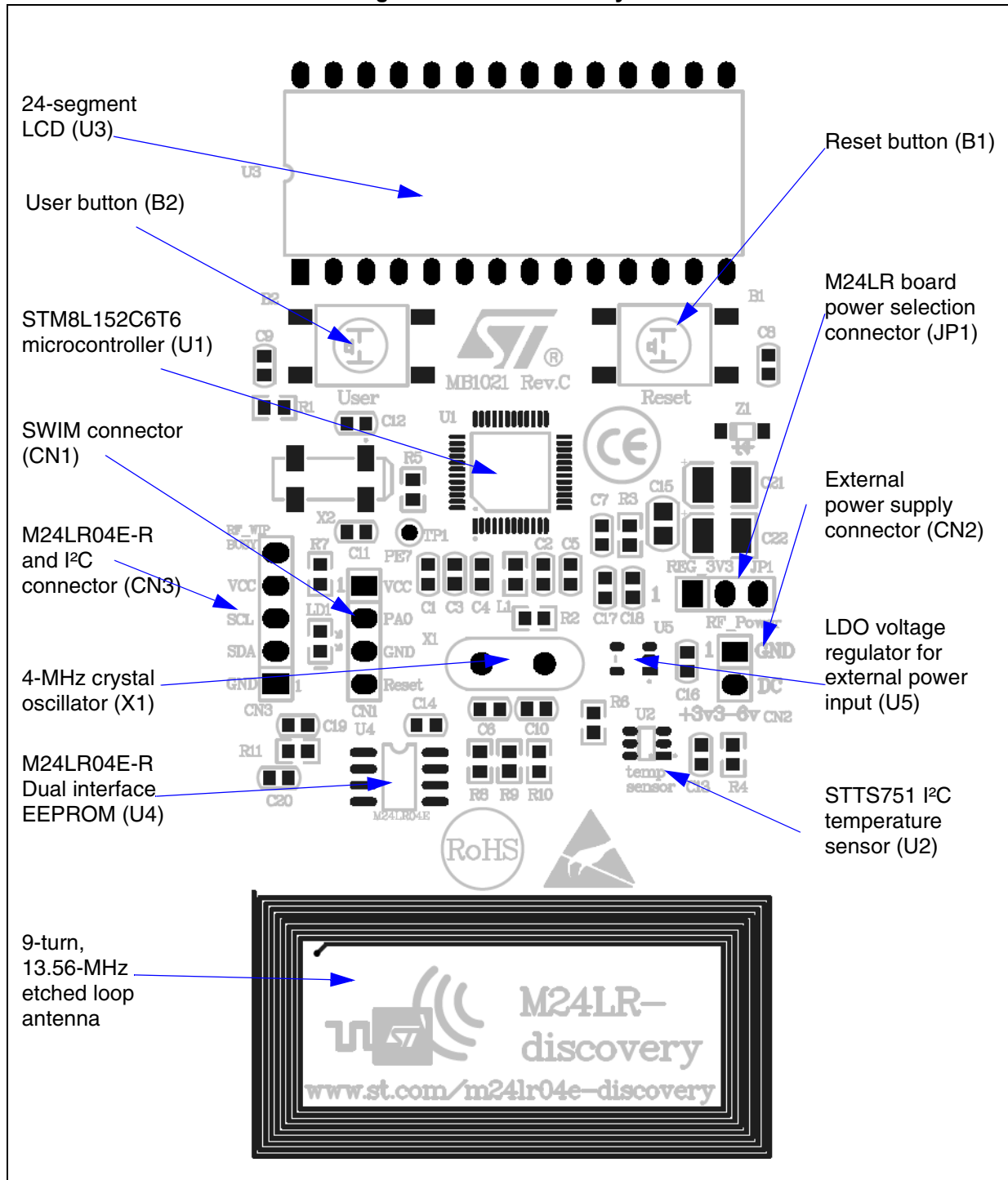
### RF transceiver board

- CR95HF, a 13.56-MHz multi-protocol contactless transceiver IC with SPI and UART serial access communication
- 2-turn, 13.56-MHz etched loop antenna (47mm x 34 mm) with associated tuning circuit and lowpass filter
- STM32F103CBT6, a 32-bit microcontroller with 128 Kbytes of Flash memory and USB interface in a 48-pin LQFP package
- KF33BDT, a 3.3V low dropout (LDO) voltage regulator
- USB connector
- NX2520SA, a 27.12-MHz EXS00A-CS01206 crystal oscillator for CR95HF transceiver
- HC-49XA-C20QQA-8.000MHz for STM32
- 20-pin JTAG connector for STM32 programming and debugging
- 1 push button (Reset)

### 3 Hardware and layout description

#### 3.1 M24LR board description

Figure 3. M24LR board layout

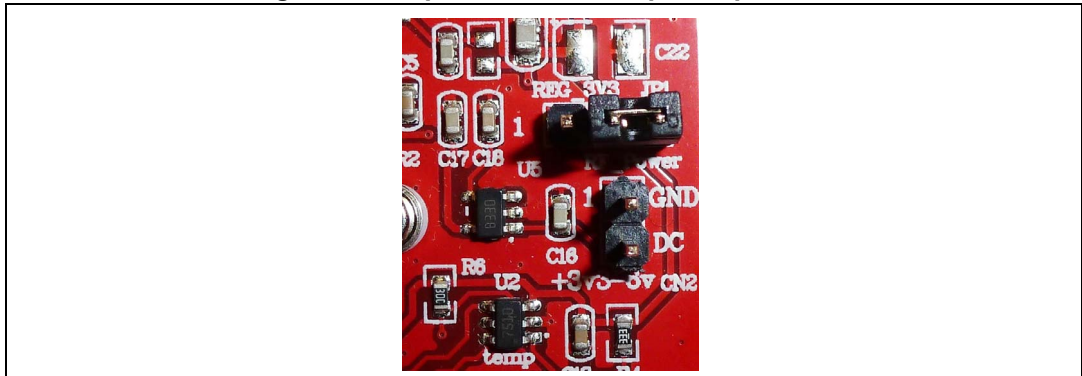




### 3.2 M24LR board power selection

When jumper JP1 is set in the “RF power” position (*Figure 4*), the M24LR board is powered by the M24LR04E-R energy harvesting analog output (Vout pin). In this configuration, the M24LR board is powered by the magnetic field flowing into its 9-turn, etched loop antenna, delivered from a 13.56-MHz RF source, such as an RFID reader or an NFC phone. The DC voltage supply delivered by the M24LR04E-R Vout pin is filtered by an 10-nF capacitor (C19) and stored in the 150- $\mu$ F capacitor (C22). The low dropout (LDO) voltage regulator (U5) is bypassed, so the M24LR04E-R voltage is filtered but not regulated.

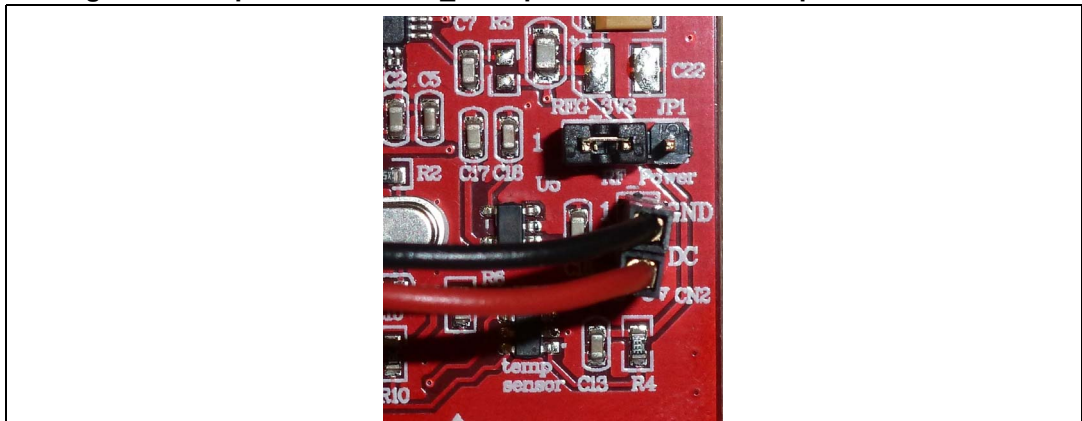
**Figure 4. Jumper JP1 set in RF power position**



When jumper JP1 is set in the “REG 3.3” position (*Figure 5*), the M24LR board is powered by the external power supply connected on connector CN2. The voltage applied on the external power supply connector CN2 is regulated by the 3.3V voltage regulator (U5). The external power supply voltage can be from 3.3 to 6V.

Using an external power supply is necessary when programming or debugging the STM8L MCU using the SWIM connector (CN1).

**Figure 5. Jumper JP1 in “REG\_3V3” position and external power connection**



It is also possible to connect an external antenna demonstration board featuring the energy harvesting function (ANTX-M24LRXXE) to improve or simply evaluate the energy harvesting function using a different antenna.

Figure 6 and Figure 7 illustrate the use of an external antenna using the ANT1-M24LR16E demonstration board.

- Figure 6 shows a possible direct connection of the Vout voltage coming from the ANT1-M24LR16E antenna demo board on jumper JP1 to bypass the voltage regulator (U5).
- Figure 7 shows the connection of the Vout voltage coming from the ANT1-M24LR16E antenna demo board on connector CN2 to use the voltage regulator (U5). Jumper JP1 must be set as shown in Figure 5.

Figure 6. External antenna connection with voltage regulator bypass

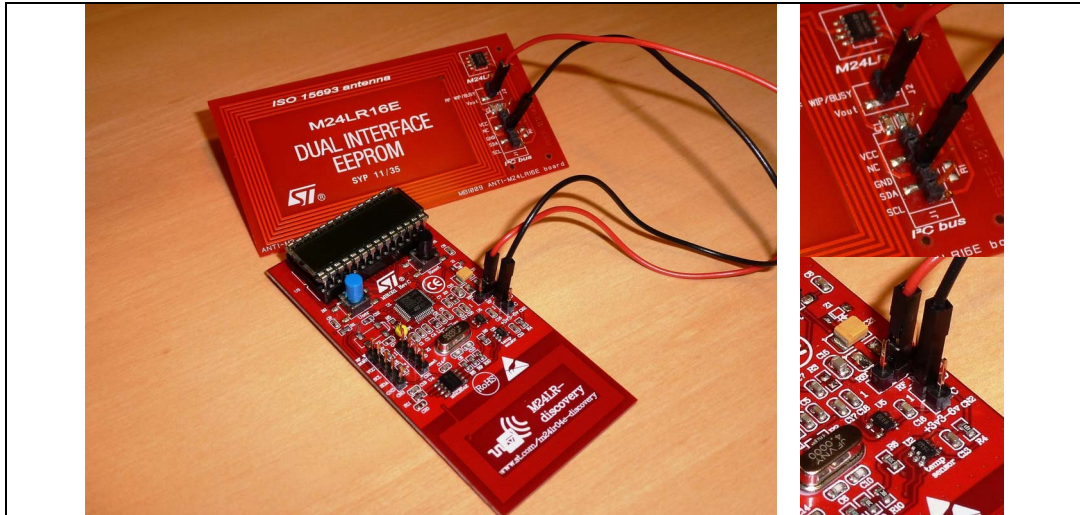
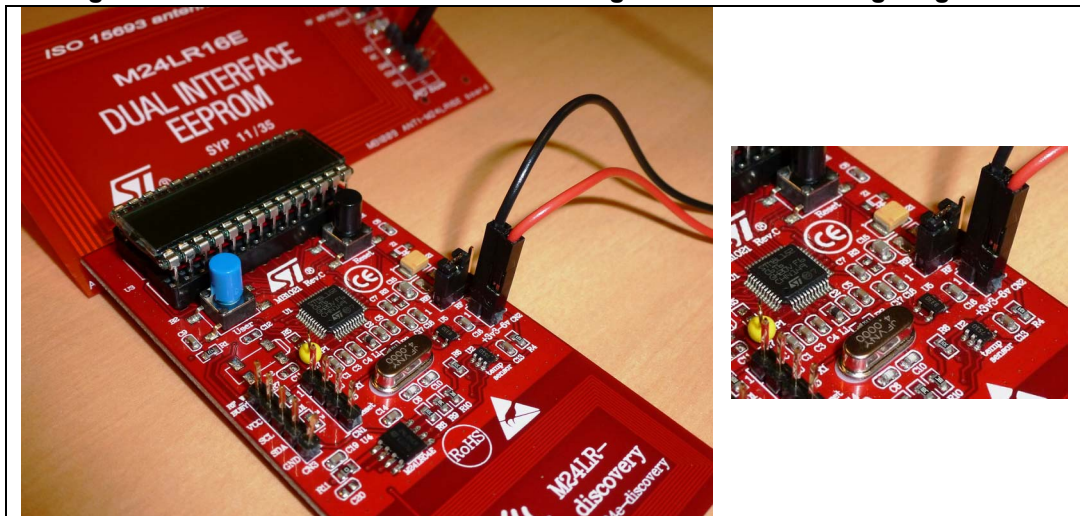
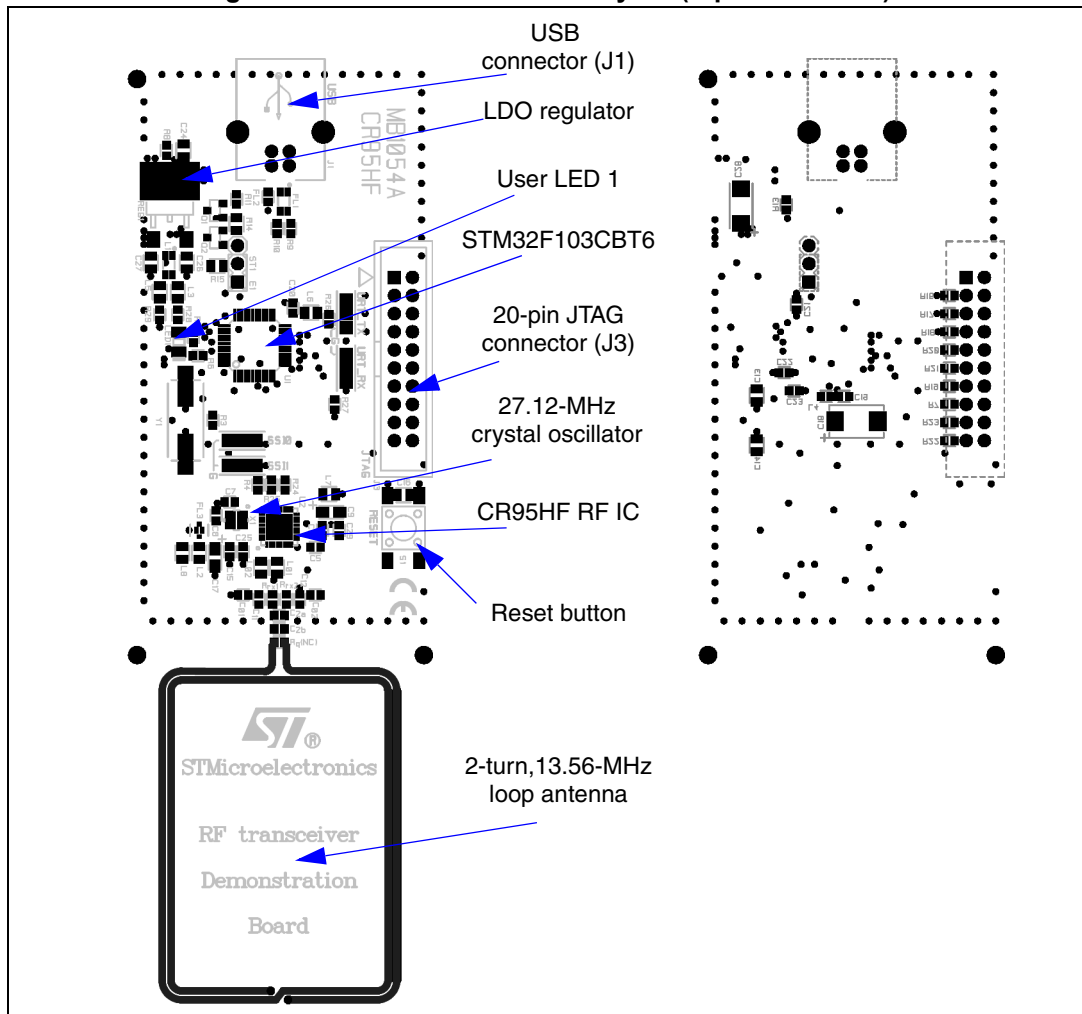


Figure 7. External antenna connection using M24LR board voltage regulator



### 3.3 RF transceiver board description

Figure 8. RF transceiver board layout (top and bottom)



### 3.4 RF transceiver demonstration board powering and startup

The RF transceiver demonstration board is powered by the USB bus.

When powered up, the CR95HF starts in an autonomous mode called “tag hunting”: the red LED 1 lights up every time a tag is recognized. During Tag Hunting mode, the RF transceiver demonstration board switches ON and OFF the magnetic field at each RF protocol change. A constant magnetic field is naturally more appropriate to evaluate and develop battery-less applications based on the Energy Harvesting capability of the M24LRXXE-R EEPROM Family.

Tag Hunting mode persists until the M24LR/CR95 application software setup file [STSW-M24LR011] is launched and the CR95HF is initialized by the software. At this moment, both Tag Hunting mode and the RF field stop. To activate a constant magnetic field emission, it is possible either to open the **Demo NDEF messages** menu and select **Show Demo NDEF & Energy Harvesting** or send a single ISO/IEC15693 RF command (Inventory, Read.).

### 3.5 Program/debug the M24LR board

To program or debug an STM8L microcontroller application on the M24LR board, simply:

1. Set jumper JP1 in the “REG\_3V3” position.
2. Connect an external power supply to the “3V3-6V” connector (CN2).
3. Connect the 4-pin SWIM connector of the STLINK/V2 in-circuit debugger and programmer to connector CN1 as described in [Table 2](#).

**Table 2. M24LR board programming and debug connector**

Pin	CN2	Designation
1	Vcc	VDD supply from M24LR board
2	PA0	SWIM data input/output
3	GND	Ground supply
4	RESET	SWIM reset

### 3.6 Program/debug the RF transceiver demo board

To program or debug an STM32 microcontroller application on the RF transceiver demonstration board, simply connect the 20-pin JTAG/SWD flat ribbon of the STLINK/V2 in-circuit debugger and programmer to the RF transceiver demonstration board JTAG connector (J2).

For more information, documentation about the STLINK/V2 in-circuit debugger and programmer, please visit [www.st.com](http://www.st.com).

## **4 Federal Communications Commission (FCC) and Industry Canada (IC) compliance statements**

### **4.1 FCC Compliance Statement**

#### **4.1.1 Part 15.19**

This device complies with Part 15 of the FCC Rules. Operation is subject to the following two conditions: (1) this device may not cause harmful interference, and (2) this device must accept any interference received, including interference that may cause undesired operation.

#### **4.1.2 Part 15.21**

Any changes or modifications to this equipment not expressly approved by STMicroelectronics may cause harmful interference and void the user's authority to operate this equipment.

#### **4.1.3 FCC ID**

**FCC ID: YCPDEMOCR95HF**

### **4.2 IC Compliance Statement**

#### **4.2.1 Compliance Statement**

This device complies with Industry Canada licence-exempt RSS standard(s). Operation is subject to the following two conditions : (1) this device may not cause interference, and (2) this device must accept any interference, including interference that may cause undesired operation.

#### **4.2.2 Déclaration de conformité**

Le présent appareil est conforme aux CNR d'Industrie Canada applicables aux appareils radio exempts de licence. L'exploitation est autorisée aux deux conditions suivantes : (1) l'appareil ne doit pas produire de brouillage, et (2) l'utilisateur de l'appareil doit accepter tout brouillage radioélectrique subi, même si le brouillage est susceptible d'en compromettre le fonctionnement.

#### **4.2.3 IC ID**

**IC ID: 8976A-DEMOCR95HF**



# 5 Electrical schematic diagrams

### Figure 9. M24LR board schematics

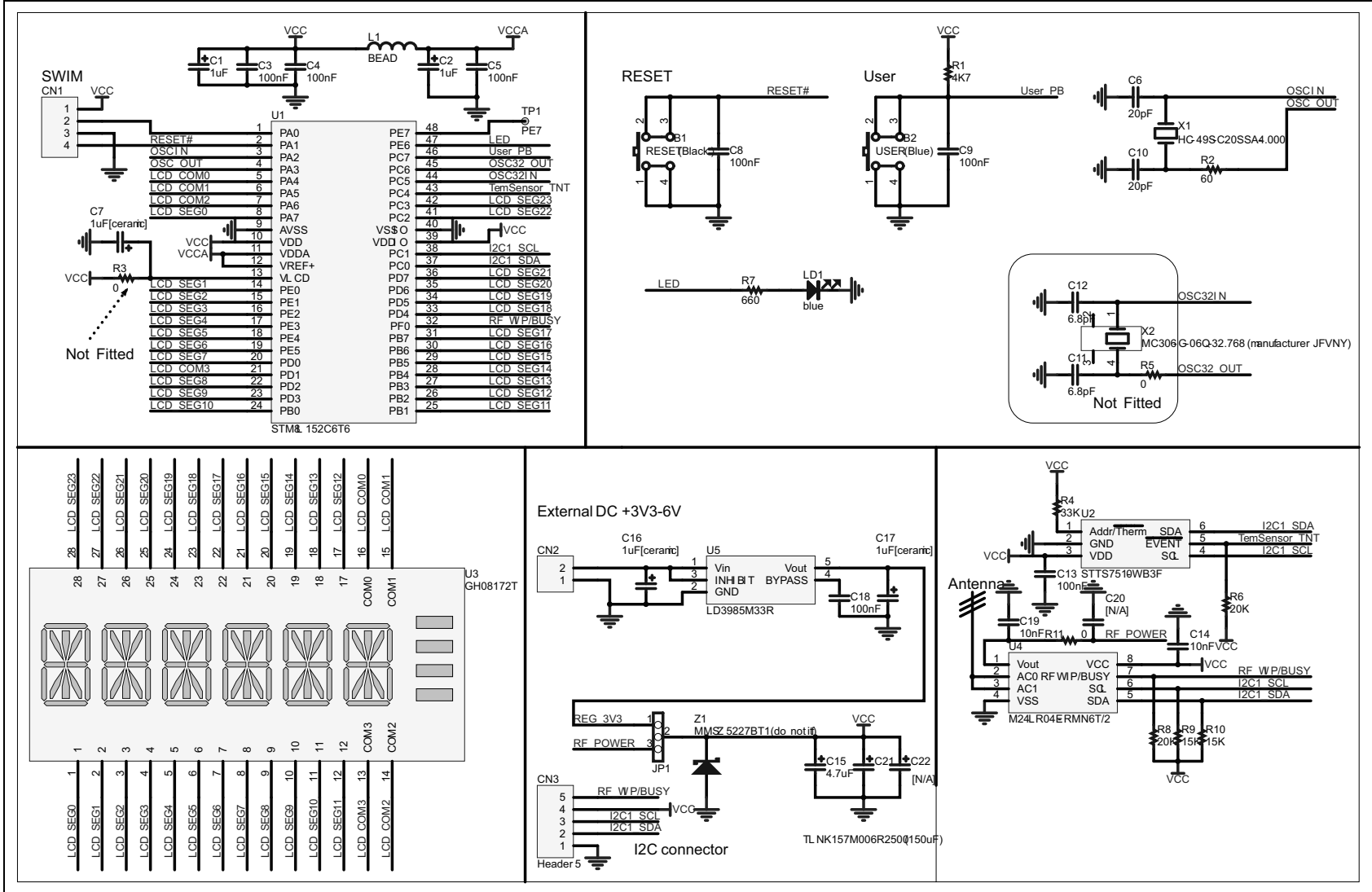


Figure 10. RF transceiver demonstration board schematics (STM32 connections)

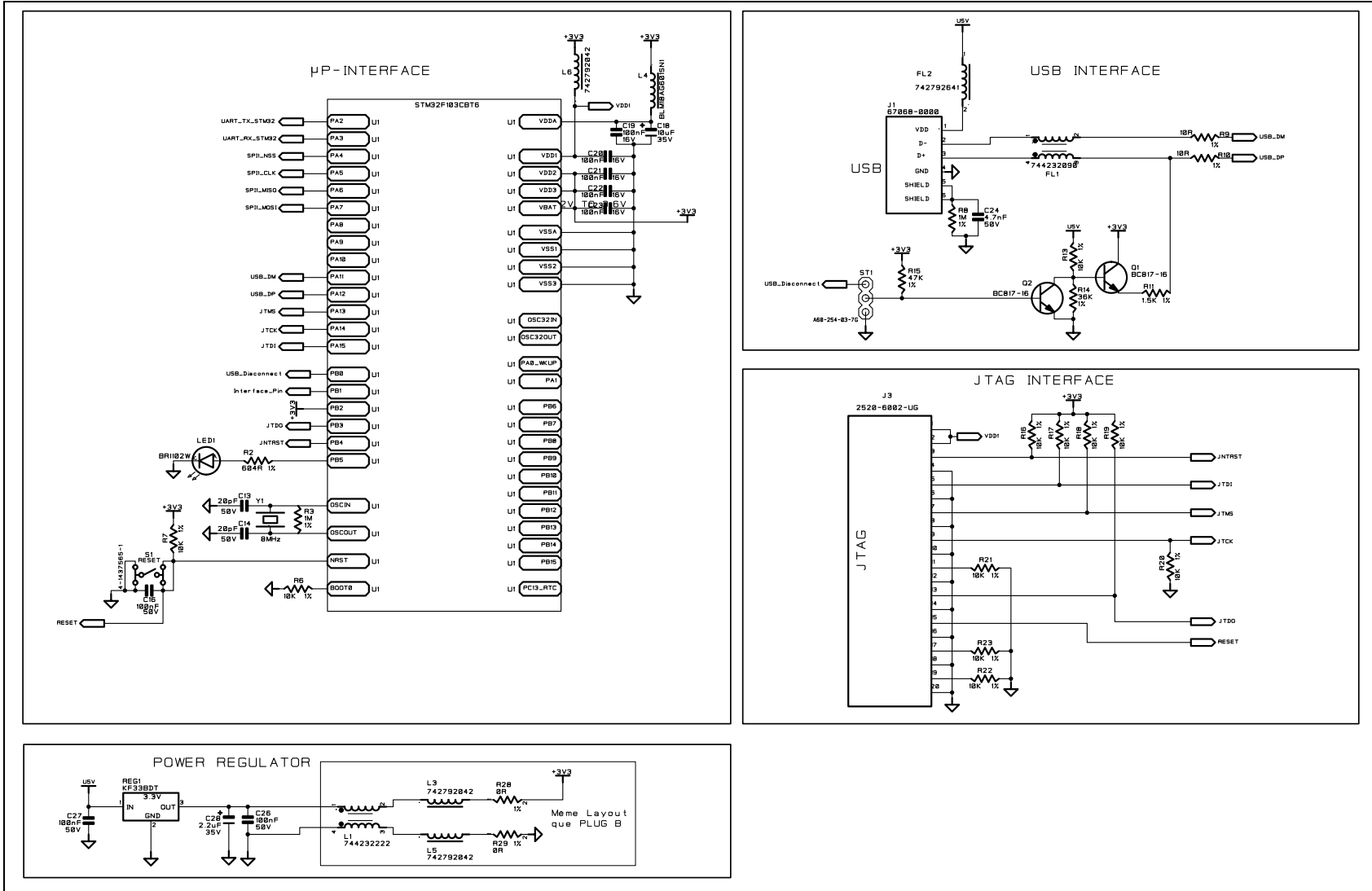
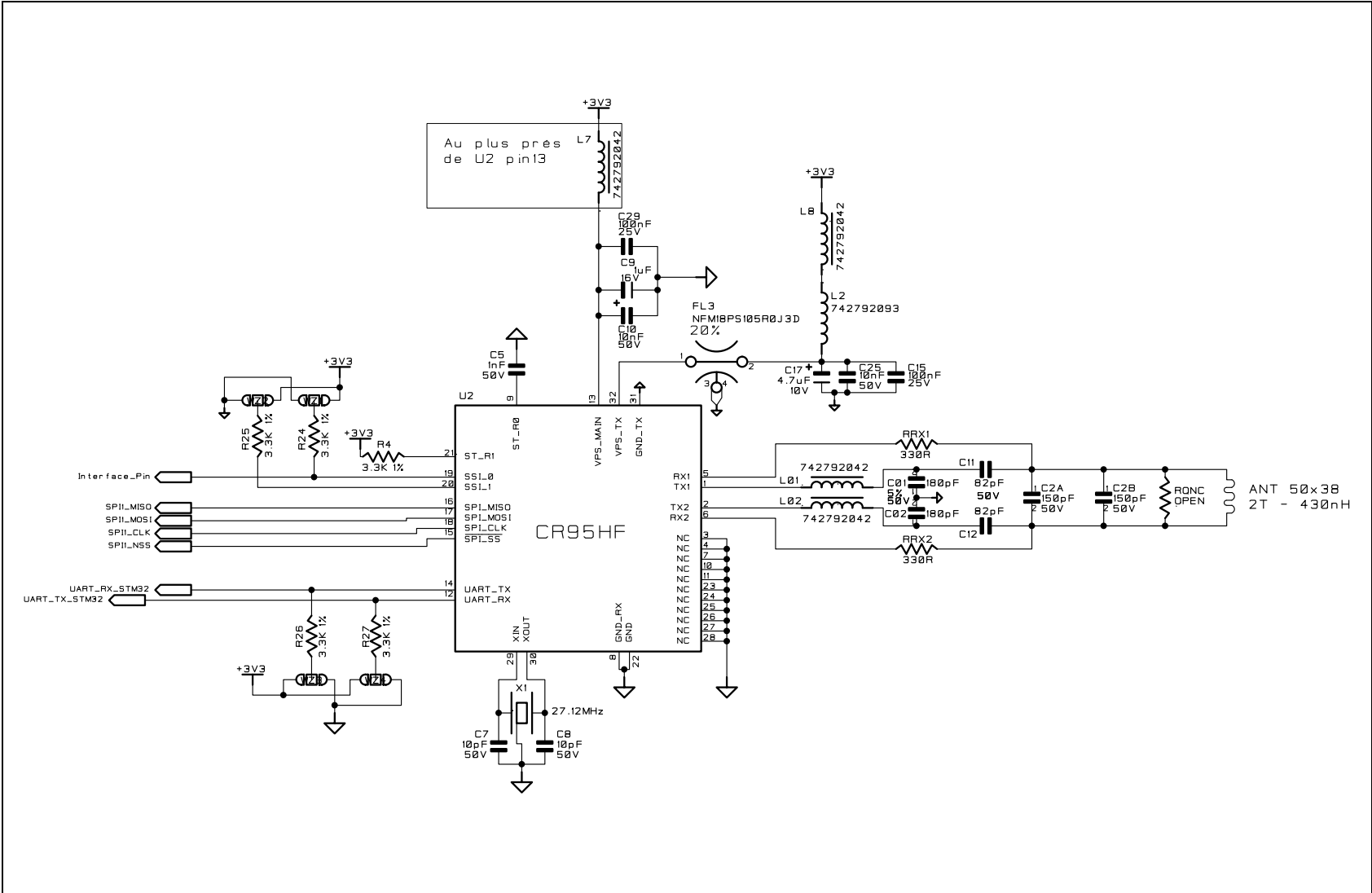


Figure 11. RF transceiver demonstration board schematics (CR95HF connections)





## 6 Revision history

**Table 3. Document revision history**

Date	Revision	Changes
06-Nov-2012	1	Initial release.
11-Mar-2013	2	Replaced "M24LR/CR95HF demonstration software" by "M24LR/CR95 application software setup file [STSW-M24LR011]" in <a href="#">Section 1.1</a> and <a href="#">Section 3.4</a> . Replaced "M24LRxx_Application_Software.exe" by "setup.exe" in <a href="#">Section 1.1</a> .
17-Mar-2015	3	Updated <a href="#">Figure 1: M24LR evaluation board</a> and <a href="#">Figure 2: RF transceiver demonstration board</a> . Removed Table 1: Applicable tools from Cover page. Added <a href="#">Section 4: Federal Communications Commission (FCC) and Industry Canada (IC) compliance statements</a> .

**IMPORTANT NOTICE – PLEASE READ CAREFULLY**

STMicroelectronics NV and its subsidiaries ("ST") reserve the right to make changes, corrections, enhancements, modifications, and improvements to ST products and/or to this document at any time without notice. Purchasers should obtain the latest relevant information on ST products before placing orders. ST products are sold pursuant to ST's terms and conditions of sale in place at the time of order acknowledgement.

Purchasers are solely responsible for the choice, selection, and use of ST products and ST assumes no liability for application assistance or the design of Purchasers' products.

No license, express or implied, to any intellectual property right is granted by ST herein.

Resale of ST products with provisions different from the information set forth herein shall void any warranty granted by ST for such product.

ST and the ST logo are trademarks of ST. All other product or service names are the property of their respective owners.

Information in this document supersedes and replaces information previously supplied in any prior versions of this document.

© 2015 STMicroelectronics – All rights reserved