

5

4

3

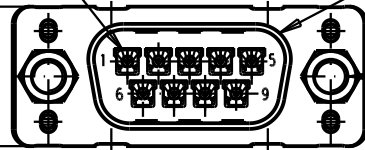
2

1

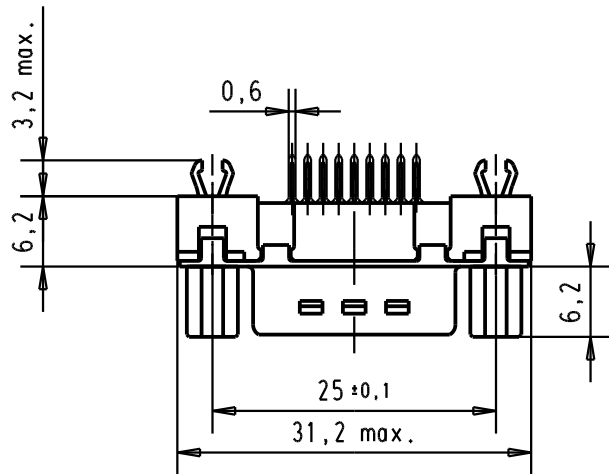
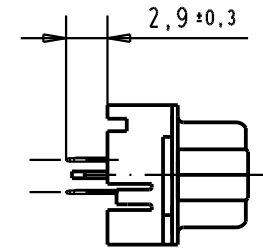
Mating face according to : MIL-C-24308 / DIN 41652 / CECC 75301-802

No. 1 contact

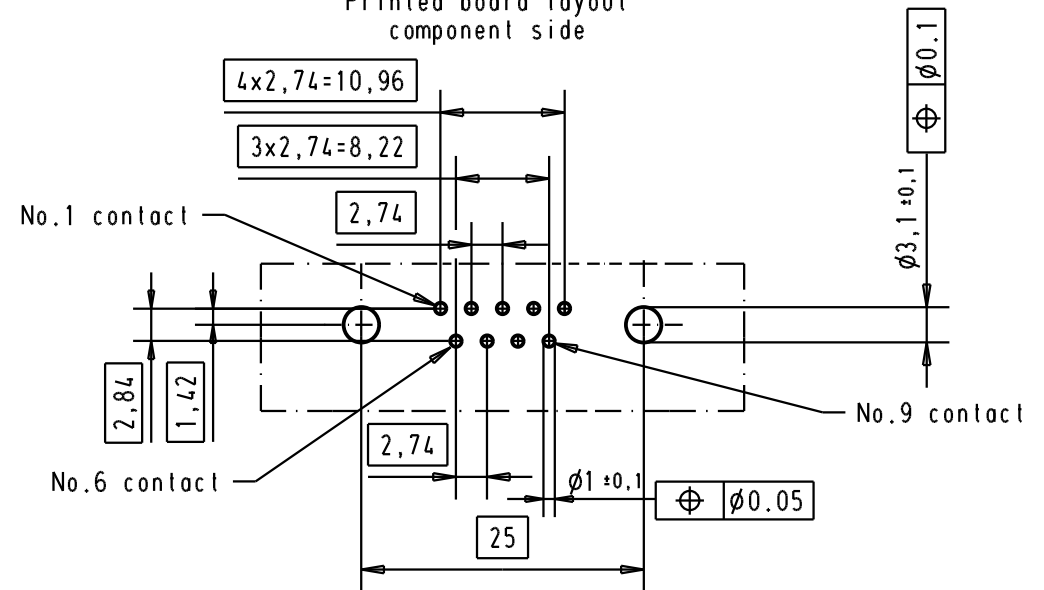
12,5 max.




screw lock thread



Printed board layout component side



Connector retention and insertion forces on the PCB = 25 / 80 newtons

A	09 65 169 3733	M3	1							 All Dim. in mm Orig. Size DIN A 4	D-Sub, High temperature, 9 poles, male, straight with solder pins 2.9, screw lock and grounding board lock.	Maßstab/ Scale  1,5:1
	09 65 169 6733	M3	2				Det.	04/SEP/02	YT			
	09 65 169 7733	M3	3				Insp.					
	09 65 169 3713	4-40 UNC	1				Stand.					
	09 65 169 6713	4-40 UNC	2	31892	22/04/04	JH	HARTING EURL F-95972 Paris					
09 65 169 7713	4-40 UNC	3	31084	04/SEP/02	YT	TB 09 65 169 x7x3				Blatt/ Page 1 /		
	Part number	Screw lock thread	Performance level	Mod.	Det.	Name			Sub.			