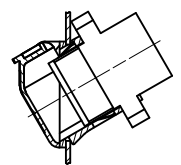
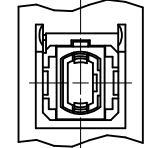
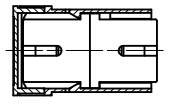
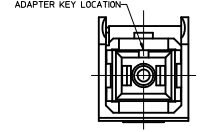
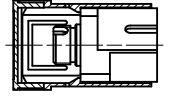
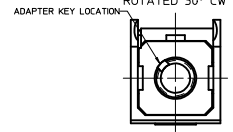
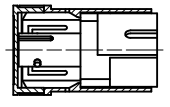
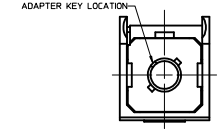
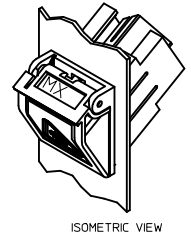
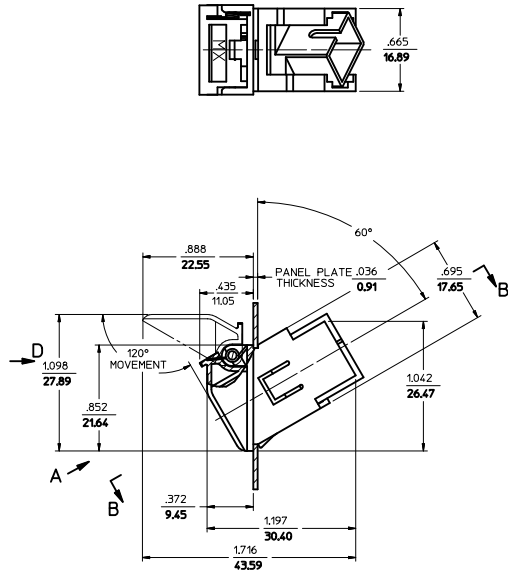
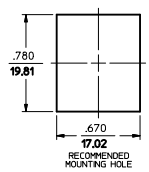
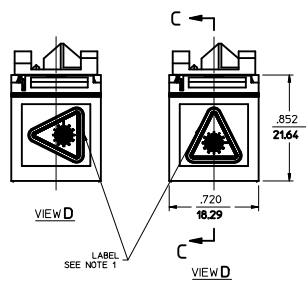


BEZEL P/N	VERSION	SLEEVE MATERIAL	ADAPTER COLOR
106004-3280	1 (ST-SC)	PHOSPHOR BRONZE	METAL
106004-3281	1 (ST-SC)	ZIRCONIA	
106004-3282	2 (FC-SC)	PHOSPHOR BRONZE	BLACK
106004-3283	2 (FC-SC)	ZIRCONIA	
106004-3284	3 (SC-SC)	PHOSPHOR BRONZE	RED
106004-3285	3 (SC-SC)	ZIRCONIA	
106004-3286	3 (SC-SC)	PHOSPHOR BRONZE	BLACK
106004-3287	3 (SC-SC)	ZIRCONIA	
106004-3288	4 (MTP-MTP)	N/A	METAL
106004-3290	1 (ST-SC)	PHOSPHOR BRONZE	
106004-3291	1 (ST-SC)	ZIRCONIA	BLACK
106004-3292	2 (FC-SC)	PHOSPHOR BRONZE	
106004-3293	2 (FC-SC)	ZIRCONIA	RED
106004-3294	3 (SC-SC)	PHOSPHOR BRONZE	
106004-3295	3 (SC-SC)	ZIRCONIA	BLACK
106004-3296	3 (SC-SC)	PHOSPHOR BRONZE	
106004-3297	3 (SC-SC)	ZIRCONIA	RED
106004-3298	4 (MTP-MTP)	N/A	
106004-3308	3 (SC-SC)	ZIRCONIA	GREEN



NOTES:
1. LABEL P/N 106004-3013 TO BE INSTALLED BY CUSTOMER.
2. MTP-MTP ADAPTER (VERSION 4) TO BE ASSEMBLED BY CUSTOMER, AFTER BEZEL IS INSTALLED IN PANEL CUTOUT.

ENTER DESCRIPTION IEC NO: MF2010-0335 DRAWN: RFEVZNER CHYD: 2010/02/02 APPR: JGUMIN 2010/02/11	QUALITY SYMBOLS	GENERAL TOLERANCES (UNLESS SPECIFIED)	DIMENSION STYLE	SCALE	DESIGN UNITS	THIRD ANGLE PROJECTION	
	0 = 0 0 = 0	4 PLACES ± --- ± --- 3 PLACES ± --- ± --- 2 PLACES ± --- ± --- 1 PLACE ± --- ± --- ANGULAR ±1/2°	IN/MM 2:1 INCH	DRAWN BY: RPACIFICI DATE: 2005/10/20 CHECKED BY: DATE:	TITLE: SIMPLEX BEZEL ADAPTER KITS		
	DRAFT WHERE APPLICABLE MUST REMAIN WITHIN DIMENSIONS	APPROVED BY: JGUMIN DATE: 2010/02/02	MATERIAL NO: SEE TABLE DOCUMENT NO: SD-106004-32XX		MOLEX INCORPORATED		
	SIZE D	THIS DRAWING CONTAINS INFORMATION THAT IS PROPRIETARY TO MOLEX INCORPORATED AND SHOULD NOT BE USED WITHOUT WRITTEN PERMISSION					