

THIS DRAWING IS UNPUBLISHED. RELEASED FOR PUBLICATION
 © COPYRIGHT - BY TYCO ELECTRONICS CORPORATION. ALL RIGHTS RESERVED.

LOC	DIST	REVISIONS					
GP	00	P	LTR	DESCRIPTION	DATE	DWN	APVD
			A	NEW RELEASE	5MAR07	RG	DO

1. PART NUMBER CHANGES AND/OR DESIGN CHANGES AFFECTING ITEM INTERCHANGEABILITY REQUIRE PRIOR TYCO APPROVAL AND AUTHORIZATION BY REVISION TO THIS DRAWING.

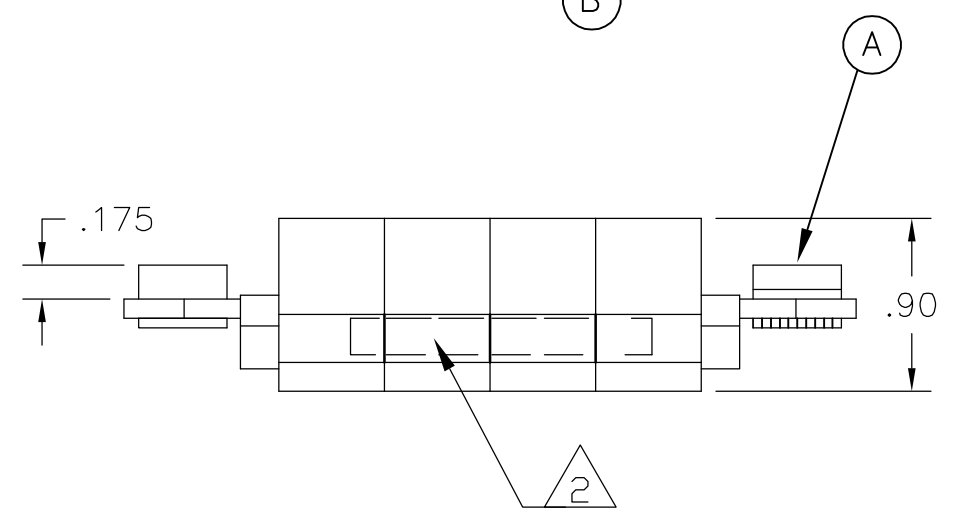
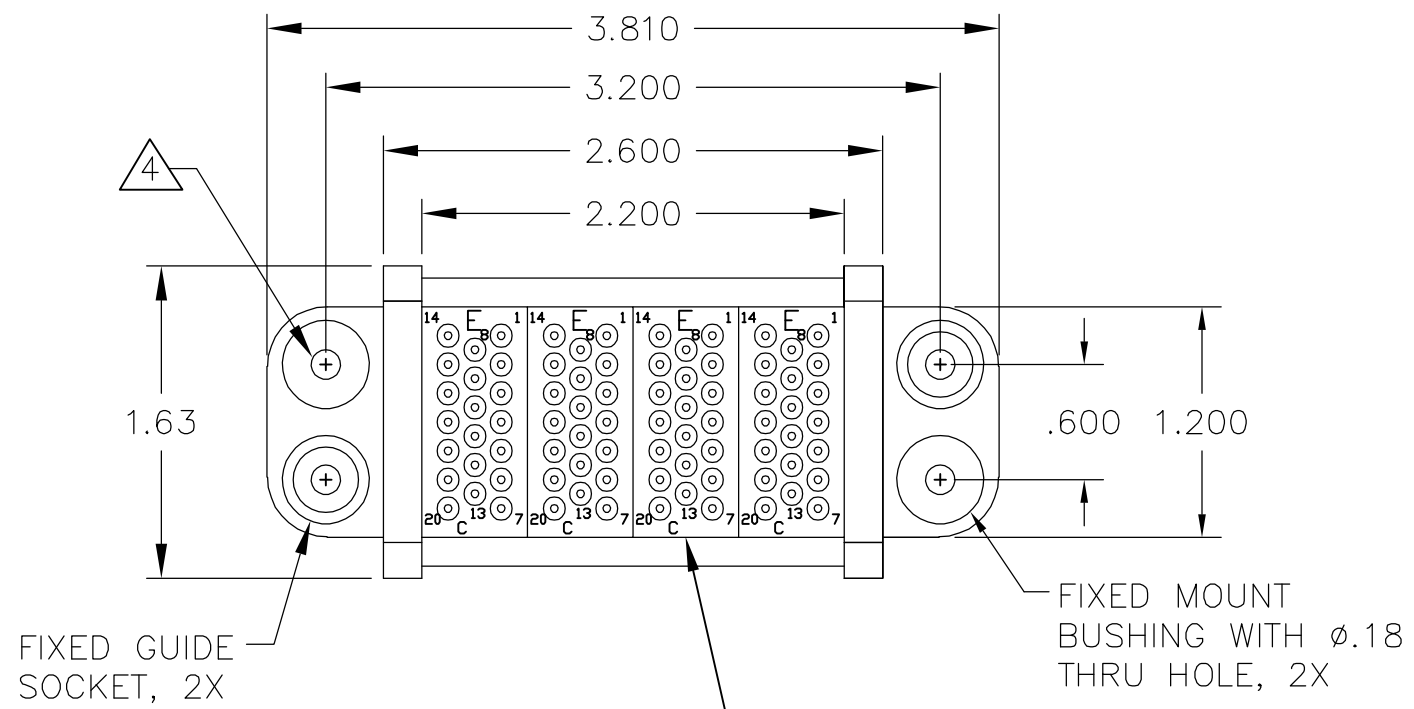
2. ITEMS PROVIDED TO THIS SPECIFICATION TO BE PERMANENTLY IDENTIFIED PER THE FOLLOWING IDENTIFIER:

YEAR WEEK
 TYCO PART NUMBER DATE CODE (e.g. 0212)
 XXXXXXXX-X XXXX

3. MODULES NOTED ARE CRIMP REMOVABLE STYLE. REMOVABLE CONTACTS (ITEM C) WILL BE PACKAGED AND SHIPPED LOOSE WITH THE CONNECTOR ASSEMBLY.

4. MOUNTING FLANGE BUSHINGS ACCEPT 6/32 SCREW (.156 DIA. CLEARANCE HOLE, FLOAT MOUNT) OR 8/32 SCREW (.173 DIA. CLEARANCE HOLE, FLOAT MOUNT), USER SUPPLIED.

5. THIS CONNECTOR MATES WITH PIN CONN. TYCO PN 6646166-1

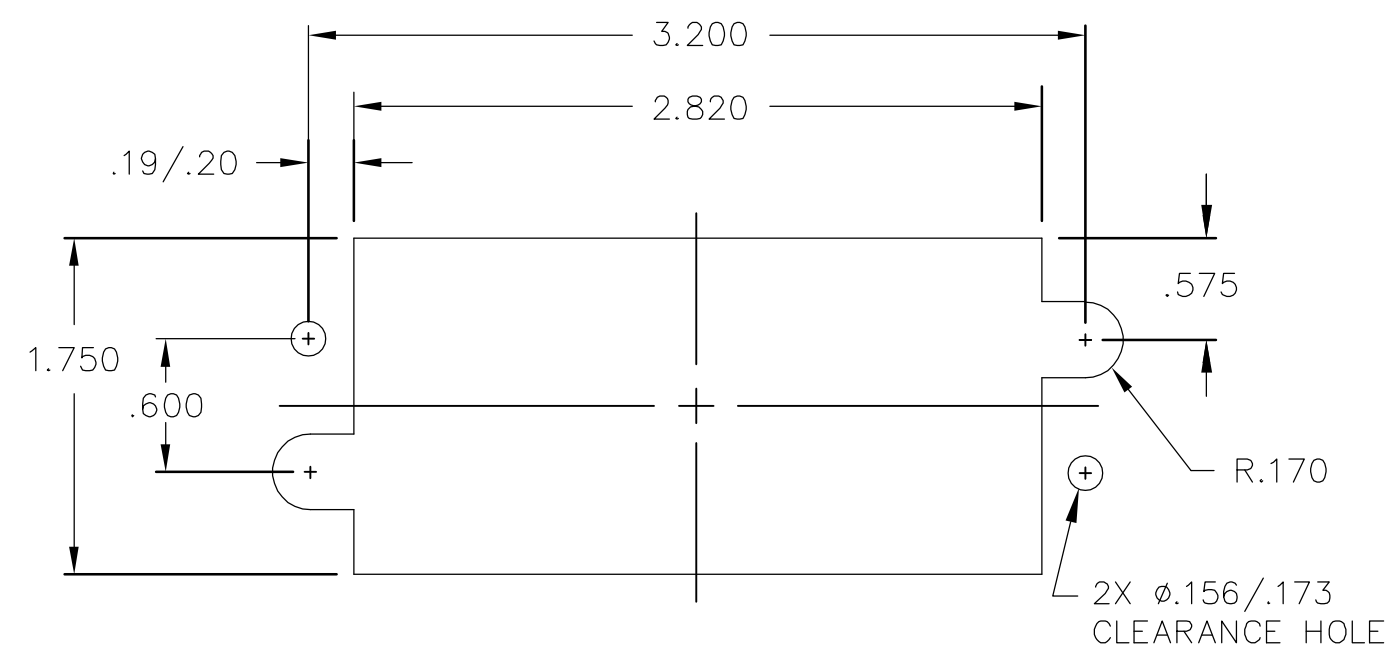


3	80	1648325-1	SOCKET CONTACT, SIZE #20, CRIMP	C
	4	1648468-1	MODULE C	B
	2	6648263-1	END CAP, FIXED	A
	-1	PART NUMBER	DESCRIPTION	ITEM

THIS DRAWING IS A CONTROLLED DOCUMENT.		DWN R.GRZYBOWSKI 05MAR2007	Tyco Electronics Corporation Harrisburg, PA 17105-3608		
DIMENSIONS: INCHES	TOLERANCES UNLESS OTHERWISE SPECIFIED:	CHK D.ORRIS 5MAR07	NAME S.FLICKINGER 5MAR07		
	0 PLC ± -	APVD S.FLICKINGER 5MAR07	PRODUCT SPEC		
	1 PLC ± -		APPLICATION SPEC		
	2 PLC ± .02		SIZE	CAGE CODE	DRAWING NO
	3 PLC ± .010		A3	00779	C-6646167
	4 PLC ± -		RESTRICTED TO		
	ANGLES ± 5		-		
MATERIAL	FINISH	WEIGHT	-		
-	-	-	CUSTOMER DRAWING		
			SCALE	SHEET	REV
			1:1	1 OF 2	A

THIS DRAWING IS UNPUBLISHED. RELEASED FOR PUBLICATION
 © COPYRIGHT - BY TYCO ELECTRONICS CORPORATION. ALL RIGHTS RESERVED.

LOC	DIST	REVISIONS					
GP	00	P	LTR	DESCRIPTION	DATE	DWN	APVD
		-		SEE SHEET 1	-	-	-



SOCKET PANEL MOUNT CUTOUT
 SCALE: NONE



THIS DRAWING IS A CONTROLLED DOCUMENT.		DWN R.GRZYBOWSKI 05MAR2007	Tyco Electronics Corporation Harrisburg, PA 17105-3608	
DIMENSIONS: INCHES	TOLERANCES UNLESS OTHERWISE SPECIFIED:	CHK D.ORRIS 5MAR07	NAME	
	0 PLC ± -	APVD S.FLICKINGER 5MAR07	SOCKET CONNECTOR DOMINO W/ PANEL CUT-OUT	
	1 PLC ± -	PRODUCT SPEC	-	
	2 PLC ± .02	APPLICATION SPEC	-	
	3 PLC ± .010	WEIGHT	-	
	4 PLC ± -	CUSTOMER DRAWING	SIZE A3	CAGE CODE 00779
MATERIAL	FINISH		DRAWING NO G-6646167	RESTRICTED TO
-	-		SCALE 1:1	SHEET 2 OF 2
			REV A	