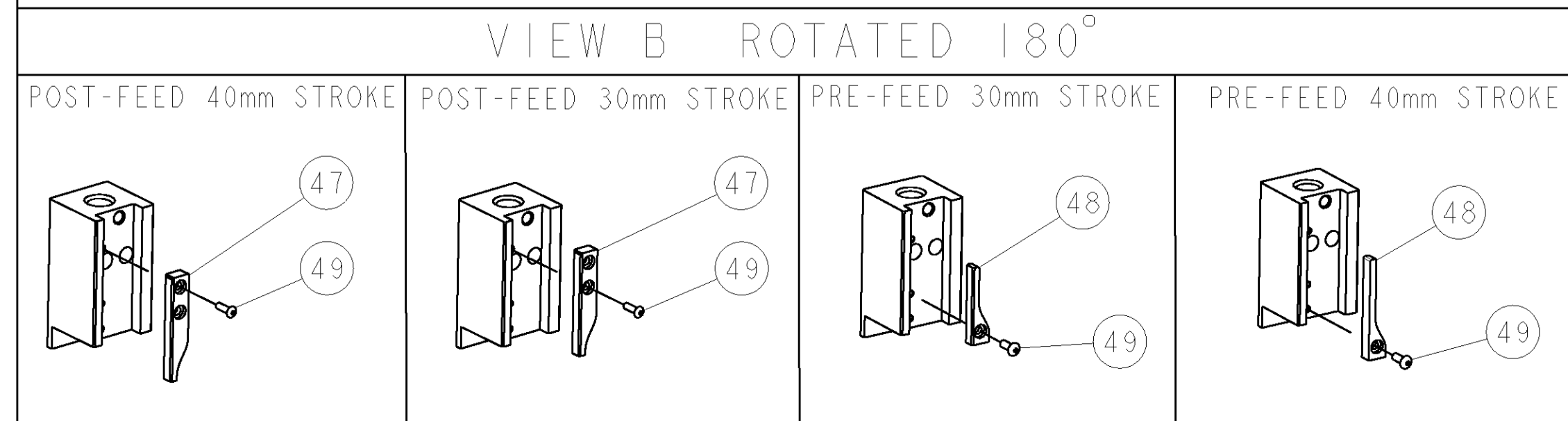


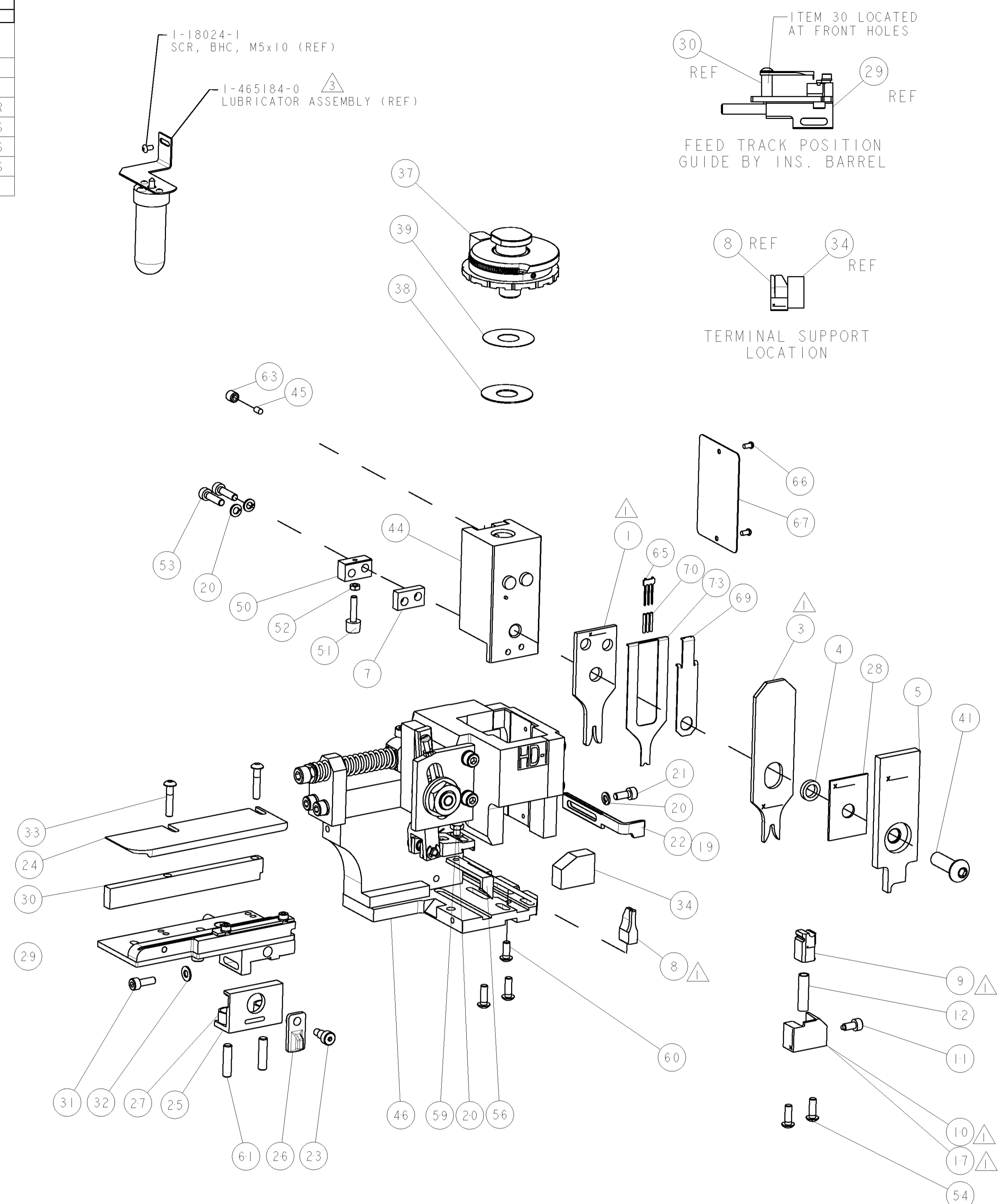
PART NUMBER	REV	TERMINATOR	FEED TYPE	DESCRIPTION
1528590-1	B	LEADMAKER	MECH POST FEED	CUTS CARRIER
1528590-2	B	BENCH	MECH PRE FEED	CUTS CARRIER
1528590-6	B	LEADMAKER	MECH POST FEED	CONTINUOUS CARRIER
7-1528590-1	B	LEADMAKER	MECH POST FEED	-1 AND SPARE PARTS
7-1528590-2	B	BENCH	MECH PRE FEED	-2 AND SPARE PARTS
7-1528590-6	B	LEADMAKER	MECH POST FEED	-6 AND SPARE PARTS
7-1528590-7	A	-	-	SPARE PARTS KIT

CRIMP DATA		TE TERMINAL		TE CRIMP SPEC	
TERMINAL NAME: 1.6mm ROUND SYSTEM CONTACT					
CRIMP	SIZE	TYPE	RANGE		
WIRE	2.03 [1.080 IN]	F	0.50-1.00mm ²		
INSUL	2.79 [1.110 IN]	OV	1.40-2.70 [1.055-1.106 IN]		
WIRE STRIP LENGTH		APPL INSTRUCTIONS			
3.90-4.70 [1.54-.185 IN]		408-8322 & 408-8490			
TERMINAL APPL SPEC		114-20121		FEED 12.50 [1.492 IN]	
TERMINALS APPLIED					
PIN	SOCKET				
1437709-7	1-1437709-0				
1-1437709-2	1-1437709-5				
-	1437709-2				
-	2-1437709-8				
WIRE SIZE	CRIMP HEIGHT	REF SETTING			
1.00 mm ²	1.33 ±0.05 [1.052 ±.002 IN]	B1			
0.50 + 0.50 mm ²	1.33 ±0.05 [1.052 ±.002 IN]	B1			
0.50 + 0.35 mm ²	1.27 ±0.05 [1.050 ±.002 IN]	B6			
0.75 mm ²	1.24 ±0.05 [1.049 ±.002 IN]	B8			
0.35 + 0.35 mm ²	1.21 ±0.05 [1.048 ±.002 IN]	C0			
0.50 mm ²	1.15 ±0.05 [1.045 ±.002 IN]	C4			

- △ RECOMMENDED SPARE PARTS.
- 2. GREASE RAM, CAM, CAM FOLLOWER AND FEED ROD LIGHTLY.
- △ CERTAIN TERMINALS REQUIRE LUBRICATION. REFER TO THE APPLICATOR INSTRUCTION SHEET FOR MORE INFORMATION.
- 4. LUBRICATE DAILY PER THE APPLICATOR INSTRUCTION SHEET SUPPLIED WITH THE APPLICATOR.



* WARNING
ON INSTALLATION, SET WIRE DISC TO LARGEST WIRE SIZE SETTING. USE OF SETTINGS BELOW MIN. REQUIRED CRIMP HEIGHT SETTING WILL CAUSE DAMAGE TO CRIMP TOOLING.



SET UP GAGE
458637-3

LOC	DIST	REV	DESCRIPTION	DATE	OWN	APVD
A	66		SEE ECO-06-007939	04APR2006	DP	MC
B			RELEASED	16JUN2009	LG	GB

-	-	-	-	-	-	1490525-3	DEPRESSOR, WIRE	73
-	-	-	-	-	-	-	-	72
-	-	-	-	-	-	1338705-3	DOCUMENTATION PACKAGE	71
-	3	3	3	3	3	2-23147-2	SPRING, COMPRESSION	70
-	-	-	-	-	-	1490524-1	DEPRESSOR, SPACER	69
-	-	-	-	-	-	-	-	68
-	-	-	-	-	-	461264-5	PLATE, IDENTIFICATION	67
-	2	2	2	2	2	21017-2	SCREW, DRIVE	66
-	-	-	-	-	-	1424350-1	HOLDER, PIN, WIRED	65
-	-	-	-	-	-	-	-	64
-	-	-	-	-	-	3-18031-0	SCR, SET, CUP POINT M6 X 6.0	63
-	-	-	-	-	-	-	-	62
-	2	2	2	2	2	2-18032-5	SCR, SET, FLT POINT M5 X 20.0	61
-	-	-	-	-	-	18024-7	SCR, BTN SKT HD CAP (M4 X 10.0)	60
-	-	-	-	-	-	5-18022-2	SCR, HEX HD CAP M4 X 8.0	59
-	-	-	-	-	-	-	-	58
-	-	-	-	-	-	-	-	57
-	-	-	-	-	-	1338685-1	PAWL, FEED	56
-	-	-	-	-	-	-	-	55
-	4	4	4	4	4	18024-8	SCR, BTN SKT HD CAP (M4 X 12.0)	54
-	2	2	2	2	2	1-18023-3	SCR, SKT HD CAP M4 X 16.0	53
-	-	-	-	-	-	18030-1	NUT, HEX, REG M3	52
-	-	-	-	-	-	811242-5	BUMPER, HOLD DOWN	51
-	-	-	-	-	-	690753-2	SPACER, TONKER	50
-	-	-	-	-	-	18024-3	SCR, BTN SKT HD CAP (M3 X 10.0)	49
-	-	-	-	-	-	1338675-1	CAM, UNIVERSAL PRE FEED	48
-	-	-	-	-	-	1338676-1	CAM, UNIVERSAL POST-FEED	47
-	-	-	-	-	-	1320999-3	APPLICATOR SUBASSEMBLY, HDI	46
-	-	-	-	-	-	690191-1	PLUG, NYLON	45
-	-	-	-	-	-	1338660-1	RAM	44
-	-	-	-	-	-	-	-	43
-	-	-	-	-	-	-	-	42
-	-	-	-	-	-	2-18024-6	SCR, BTN SKT HD CAP (M8 X 25.0)	41
-	-	-	-	-	-	-	-	40
-	-	-	-	-	-	690125-1	SHIM SUB-ASSY	39
-	-	-	-	-	-	1-469367-2	SHIM	38
-	-	-	-	-	-	879103-3	FINE ADJUST HEAD ASSEMBLY	37
-	-	-	-	-	-	-	-	36
-	-	-	-	-	-	-	-	35
-	-	-	-	-	-	1-1320934-6	SUPPORT, TERMINAL	34
-	2	2	2	2	2	1-18024-0	SCR, BTN SKT HD CAP (M4 X 20.0)	33
-	-	-	-	-	-	18027-2	WASHER, FLAT, REG M4	32
-	-	-	-	-	-	1-18023-2	SCR, SKT HD CAP M4 X 12.0	31
-	-	-	-	-	-	1320908-8	SPACER, STRIP GUIDE	30
-	-	-	-	-	-	1633073-2	STRIP GUIDE ASSEMBLY	29
-	-	-	-	-	-	1-455888-0	SPACER, CRIMPER	28
-	2	2	2	2	2	1-22284-0	SPRING, COMPRESSION	27
-	-	-	-	-	-	356835-1	LEVER, DRAG RELEASE	26
-	-	-	-	-	-	240792-1	DRAG, TERMINAL	25
-	-	-	-	-	-	1320928-1	PLATE, STRIP GUIDE	24
-	-	-	-	-	-	980371-4	SCR, SKT HD SHLDR 5.0 DIA X 6.0	23
-	-	-	-	-	-	690472-2	STRIPPER	22
-	-	-	-	-	-	1-18023-1	SCR, SKT HD CAP M4 X 10.0	21
-	4	4	4	4	4	18025-2	WASHER, SPRG LOCK, REG M4	20
-	-	-	-	-	-	691353-1	STRIPPER	19
-	-	-	-	-	-	-	-	18
-	-	-	-	-	-	1338684-1	HOLDER, SHEAR, NO-CUT	17
-	-	-	-	-	-	-	-	16
-	-	-	-	-	-	-	-	15
-	-	-	-	-	-	-	-	14
-	-	-	-	-	-	-	-	13
-	-	-	-	-	-	3-22280-3	SPRING, COMPRESSION	12
-	-	-	-	-	-	356885-4	STOP, SHEAR	11
-	-	-	-	-	-	1320921-1	SHEAR HOLDER, FRONT, CUT	10
-	-	-	-	-	-	462006-1	FLOATING SHEAR, FRONT	9
-	1	2	2	2	1	7-1333225-7	ANVIL, COMBINATION	8
-	-	-	-	-	-	2-240641-9	SPACER	7
-	-	-	-	-	-	-	-	6
-	-	-	-	-	-	3-455889-6	DEPRESSOR, SHEAR	5
-	-	-	-	-	-	3-238011-3	BLOCK, CRIMPER SPACER	4
-	1	2	2	2	1	8-854830-3	CRIMPER, INSULATION SPECIAL	3
-	-	-	-	-	-	-	-	2
-	1	2	2	2	1	1-456405-6	CRIMPER, WIRE PREMIUM	1

-77	-76	-72	-71	-6	-2	-1	PART NO	DESCRIPTION	ITEM NO
-	-	-	-	-	-	-	-	-	84
-	-	-	-	-	-	-	-	-	83
-	-	-	-	-	-	-	-	-	82
-	-	-	-	-	-	-	-	-	81
-	-	-	-	-	-	-	-	-	80
-	-	-	-	-	-	-	-	-	79
-	-	-	-	-	-	-	-	-	78
-	-	-	-	-	-	-	-	-	77
-	-	-	-	-	-	-	-	-	76
-	-	-	-	-	-	-	-	-	75
-	-	-	-	-	-	-	-	-	74

DIMENSIONS: mm [IN]		TOLERANCES UNLESS OTHERWISE SPECIFIED:	
9 PLC	±	9 PLC	±
5 PLC	±	5 PLC	±
4 PLC	±	4 PLC	±
ANGLES	±	ANGLES	±
MATERIAL		FINISH	
-		-	

DATE: 16-Jun-09	APP'D: M. CLIFFORD	NAME: M. CLIFFORD
SCALE: 3:5	SHEET: 1	OF: 1
CUSTOMER DRAWING		

TYCO ELECTRONICS	Tyco Electronics
Harrisburg, PA 17105-3608	Harrisburg, PA 17105-3608

PRODUCT SPEC	NAME
APPLICATION SPEC	See Table
SIZE	00779
CAGE CODE	C=1528590
DRAWING NO	
RESTRICTED TO	