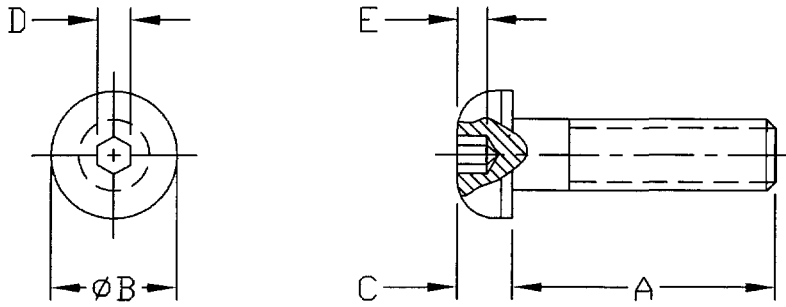

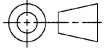


1. PART NUMBER AND CHARACTERISTICS



TE Part No	Rev	Thread	A	B	C	D	E
2079383-1	A	M3	8	5.7	1.65	2	1.04
2079383-2	B	M3	10	5.7	1.65	2	1.04
2079383-3	C	M4	40	7.6	2.2	2.5	1.3
2079383-4	D	M4	8	7.6	2.2	2.5	1.3
2079383-5	D	M4	20	7.6	2.2	2.5	1.3
2079383-6	D	M8	12	14	4.4	5	2.6
2079383-7	D	M8	25	14	4.4	5	2.6
2079383-8	D	M4	16	7.6	2.2	2.5	1.3
2079383-9	D	M6	20	10.5	3.3	4	2.08
1-2079383-0	D	M3	6	5.7	1.65	2	1.04
1-2079383-1	E	M6	12	10.5	3.3	4	2.08
1-2079383-2	F	M4	12	7.6	2.2	2.5	1.3
1-2079383-3	G	M4	25	7.6	2.2	2.5	1.3
1-2079383-4	G	M4	30	7.6	2.2	2.5	1.3
1-2079383-5	H	M8	40	14	4.4	5	2.6
1-2079383-6	J	M4	10	7.6	2.2	2.5	1.3
1-2079383-7	K	M5	12	9.5	2.75	3	1.56

- 1.1. Dimensions shall comply with ASME B18.3.4M and ISO 7380
- 1.2. Material shall be steel that meets or exceeds ISO Standard 898/1, Class 10.9
- 1.3. Shall be Directive 2002/95/EC (RoHS) compliant
- 2. MANUFACTURER
None

COMMERCIALLY PURCHASED PRODUCT SPECIFICATION				LOC B	MATERIAL See Note 1.2.	FINISH Zinc w/Clear Chromate (III)	
				 © 2014 TE Connectivity Ltd. family of companies All Rights Reserved			
				DIMENSIONS IN mm	TITLE SCREW, CAP, BUTTON SOCKET HEAD, METRIC, RoHS COMPLIANT		
							
K	Add -17	JNB	01JUL14	SHEET 1 OF 1	NO	2079383	REV K
REV	ENGINEERING CHANGE	CHK	DATE				