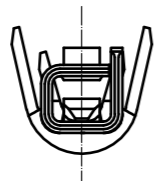
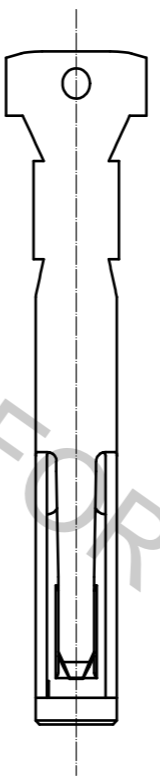
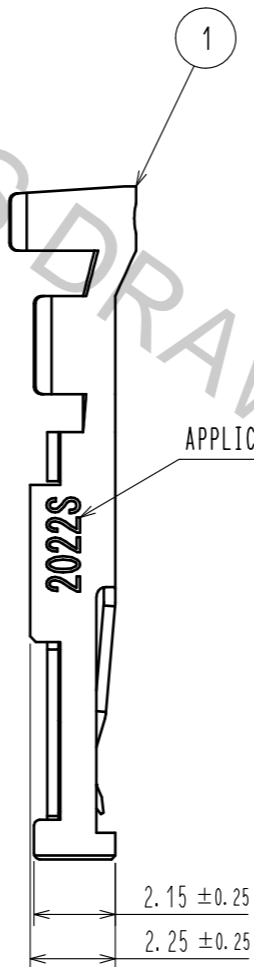
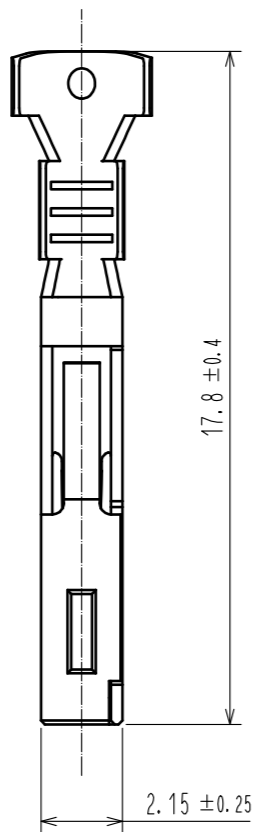
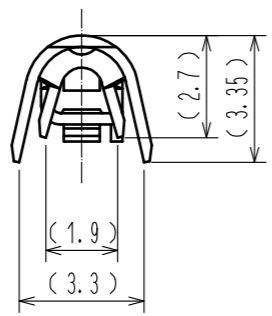
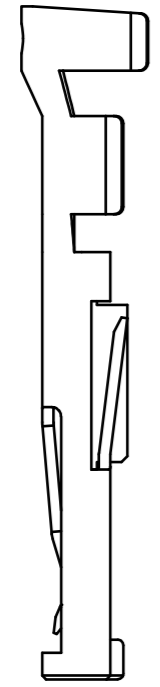


Mar.1.2016 Copyright 2016 HIROSE ELECTRIC CO., LTD. All Rights Reserved.



- 注 1. APPLICABLE WIRE IS AWG #20(0.5sq)~#22(0.3sq) OF STRANDED CABLE.  
 2. APPLICABLE CRIMPING MACHINE AND CRIMPING CONDITIONS (CRIMP HEIGHT etc.) WILL BE SPECIFIED ACCORDING TO AWG # OR WIRE APPLIED.  
 3. ONE PACKAGE CONSISTS OF 100 PCS.  
 4. THIS PRODUCT IS ASSEMBLED WITH TJ50A-41S-※.  
 5. REFER TO ATAI-E3050 FOR CRIMP QUALITY STANDARDS.

1	COPPER ALLOY	CONTACT AREA : GOLD PLATING 0.76 μm TERMINAL AREA : TIN PLATING UNDER PLATING : NICKEL PLATING
---	--------------	--

NO.	MATERIAL	FINISH . REMARKS	NO.	MATERIAL	FINISH . REMARKS		
UNITS mm		SCALE 5 : 1	COUNT	DESCRIPTION OF REVISIONS	DESIGNED	CHECKED	DATE
<b>HRS</b> HIROSE ELECTRIC CO., LTD.		APPROVED : NM. NISHIMATSU	15.04.28	DRAWING NO. EDC-128057-00-00			
		CHECKED : NM. NISHIMATSU	15.04.28	PART NO. TJ50A-2022SCA			
		DESIGNED : MO. SHIMOYAMA	15.04.28	CODE NO. CL236-3104-9-00			
		DRAWN : MO. SHIMOYAMA	15.04.28			1/1	